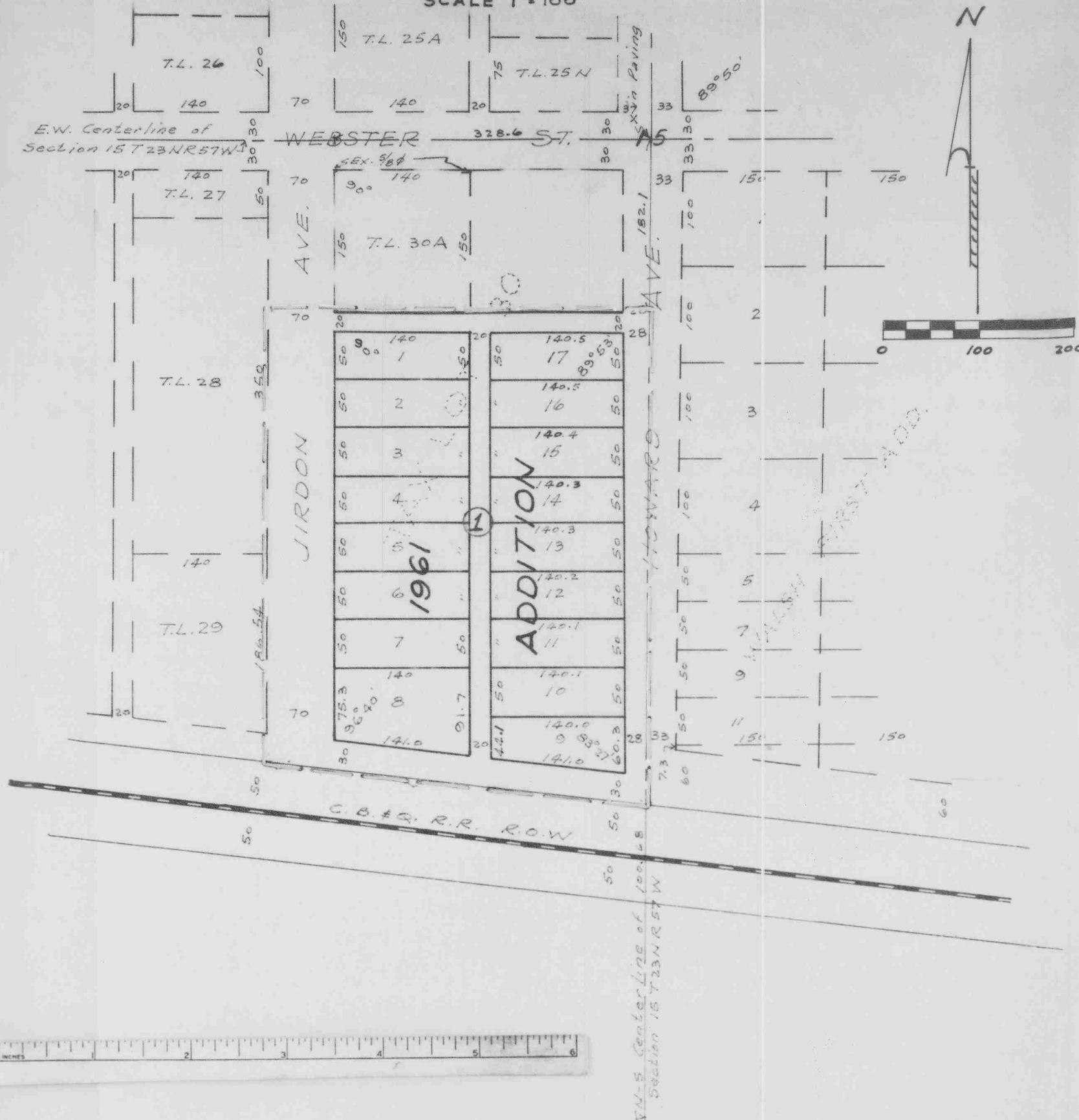


1961 ADDITION

A SUBDIVISION OF PART OF TAX LOT 30 SECTION 15 T 23 NR 57W
SCOTTS BLUFF COUNTY NEBR

90183

SCALE 1"=100'



SURVEYOR'S CERTIFICATE

I, J. T. LANGLEY, a competent Surveyor of Scotts Bluff County, Nebraska, here certify that I have accurately surveyed "1961 Addition", a Subdivision of part of Tax Lot 30, Section 15, Township 23 North, Range 57 West of 6 P.M. in the Village of Morrill, Scotts Bluff County, Nebraska, and that the portion outlined in heavy dotted red lines above is a true and correct survey of the portion so enclosed and that the lots, blocks, streets, avenues, alleys and ways are well and accurately staked off and marked with one-half inch iron pins 18 inches long, and correctly designated and shown on the above and foregoing survey.

Dated this 1st day of May, 1961.

J. T. Langley
 J. T. Langley, Scottsbluff, Nebraska
 NEBRASKA REGISTERED LAND SURVEYOR L.S. 160

DEDICATION BY OWNER

The Village of Morrill, Scotts Bluff County, Nebraska, being the owner of "1961 Addition", a Subdivision of part of Tax Lot 30, Section 15, Township 23 North, Range 57 West of 6 P.M. in the Village of Morrill, Scotts Bluff County, Nebraska, shown within the heavy dotted red lines on the foregoing plat hereby dedicate the streets, avenues, alleys, and ways, designated upon and referred to in the portion of the foregoing plat enclosed in the heavy dotted red lines, to the use and benefit of the public, said property shall hereafter be known as "1961 Addition", a Subdivision of part of Tax Lot 30, Section 15, Township 23 North, Range 57 West of 6 P.M., in the Village of Morrill, Scotts Bluff County, Nebraska.

Dated this 10th day of July, 1961.

VILLAGE OF MORRILL, NEBRASKA

By *[Signature]*
 Mayor

ATTEST:

Robt V. Andrew
 Clerk

90183