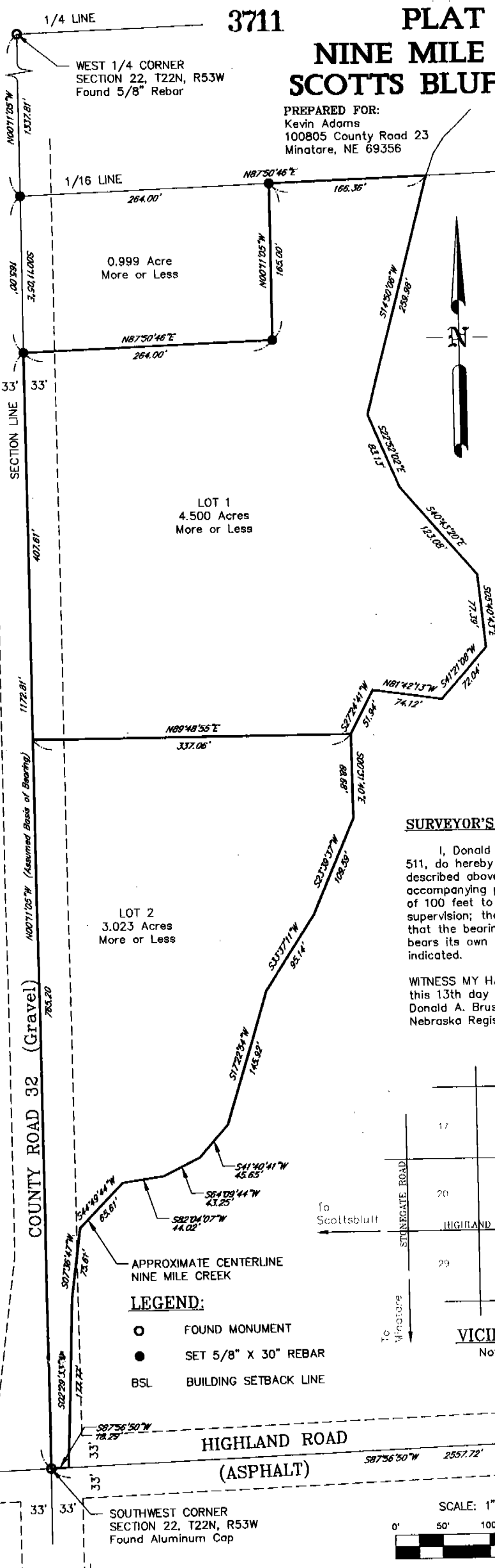


3711

PLAT OF LOTS 1 & 2, NINE MILE VALLEY SUBDIVISION SCOTTS BLUFF COUNTY, NEBRASKA

Entered in Numerical Index and Filed for Record in the Register of Deeds Office of said County of Scotts Bluff, State of Nebraska,
this 19 day of May, A.D., 1999, at 3:01 o'clock A.M., Recorded in Book 219 of Deeds
Page 209 thereof. Fee \$ 11.50
Gerald A. Bauer
Register of Deeds



LEGAL DESCRIPTION:

PLAT OF LOTS 1 & 2, NINE MILE VALLEY SUBDIVISION, SCOTTS BLUFF COUNTY, NEBRASKA, which is:

A tract of land located in the West Half of the Southwest Quarter of the Southwest Quarter (W1/2, SW1/4, SW1/4) of Section 22, Township 22 North, Range 53 West of the 6th Principal Meridian, Scotts Bluff County, Nebraska, lying on the West side of Nine Mile Creek, more particularly described as follows:

Beginning at the Southwest Corner of Section 22, said point being the POINT OF BEGINNING of this description; thence N00°11'05"W (Assumed Basis of Bearing) on the West line of said section a distance of 1,172.81 feet to a point lying 165.00 feet distant from the Northwest corner of the SW1/4 of the SW1/4 of said Section; thence N87°50'46"E a distance of 264.00 feet; thence N00°11'05"W a distance of 165.00 feet to a point on the North Line of said SW1/4 of the SW1/4, said point being 264.00 feet distant from said Northwest corner of the SW1/4 of the SW1/4; thence N87°50'46"E on said North Line a distance of 166.36 feet to a point on the centerline of Nine Mile Creek; thence Southwesterly on the centerline of said Nine Mile Creek approximately along the following distances and bearings:

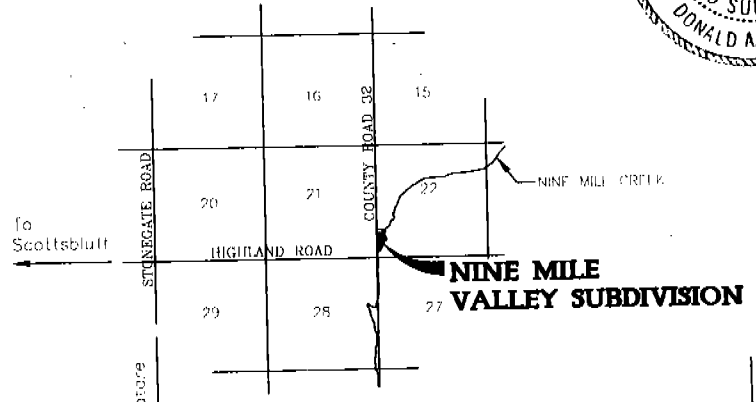
- thence S14°50'06"W a distance of 259.98 feet;
- thence S22°52'02"E a distance of 83.13 feet;
- thence S40°43'20"E a distance of 123.08 feet;
- thence S05°40'43"E a distance of 77.39 feet;
- thence S41°21'08"W a distance of 72.04 feet;
- thence N81°42'13"W a distance of 74.12 feet;
- thence S27°24'41"W a distance of 51.94 feet;
- thence S00°31'40"E a distance of 88.68 feet;
- thence S23°39'37"W a distance of 109.59 feet;
- thence S33°37'11"W a distance of 95.14 feet;
- thence S17°22'54"W a distance of 145.92 feet;
- thence S41°40'41"W a distance of 45.65 feet;
- thence S64°09'44"W a distance of 43.25 feet;
- thence S82°04'07"W a distance of 44.02 feet;
- thence S44°49'44"W a distance of 65.61 feet;
- thence S07°36'47"W a distance of 75.61 feet;
- thence S02°29'33"W a distance of 177.77 feet

to the intersection of said centerline with the South Line of said Section 22; thence S87°56'50"W on said South line a distance of 18.29 feet to the point of beginning; said tract of land containing 7.519 acres, more or less.

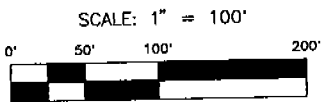
SURVEYOR'S CERTIFICATE:

I, Donald A. Brush, Nebraska Registered Land Surveyor Number 511, do hereby certify that I surveyed and plotted the tract of land described above and shown on the accompanying drawing; that the accompanying plat is a correct delineation of said survey drawn to a scale of 100 feet to the inch; that the plat was prepared under my direct supervision; that the distances are given in feet and decimals of a foot; that the bearings are assumed; that the areas are as shown; that each lot bears its own number; and that the monuments were found or set as indicated.

WITNESS MY HAND AND SEAL
this 13th day of November, 1998.
Donald A. Brush
Nebraska Registered Land Surveyor Number 511



- ### LEGEND:
- FOUND MONUMENT
 - SET 5/8" X 30" REBAR
 - BSL BUILDING SETBACK LINE

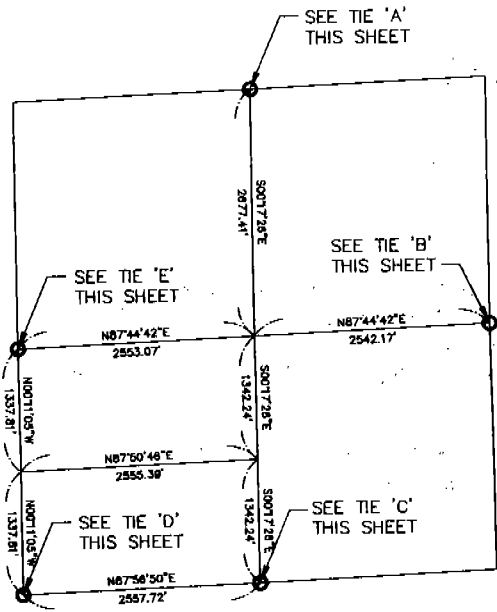


Prepared by
Baker & Associates
Engineers Planners Consultants
Scottsbluff, Nebraska
November, 1998
AutoCAD File: ADAMS.DWG

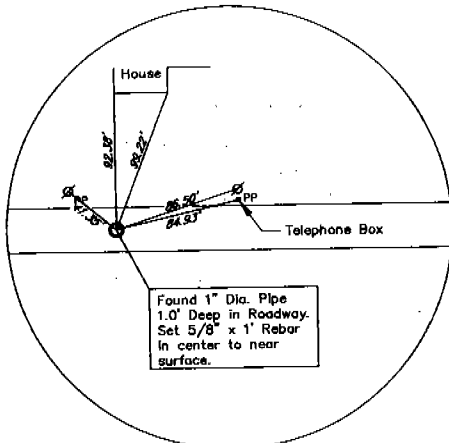
Surveyor's initials and signature area.

3711

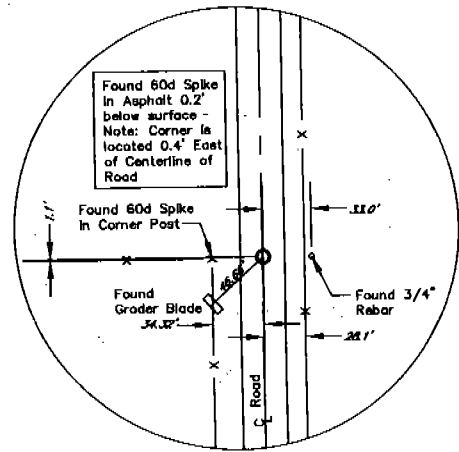
SHEET 2 OF 2
 PLAT OF LOTS 1 & 2,
 NINE MILE VALLEY SUBDIVISION
 SCOTTS BLUFF COUNTY, NEBRASKA



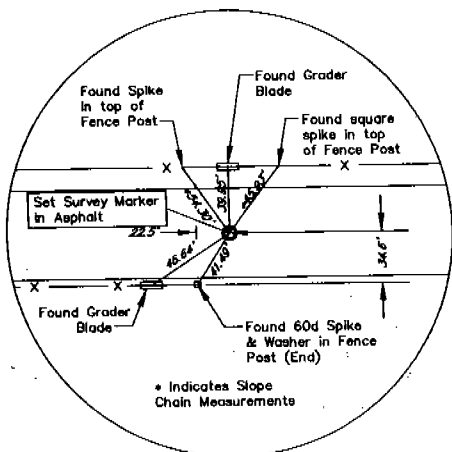
SECTION 22
 T 22 N, R 53 W



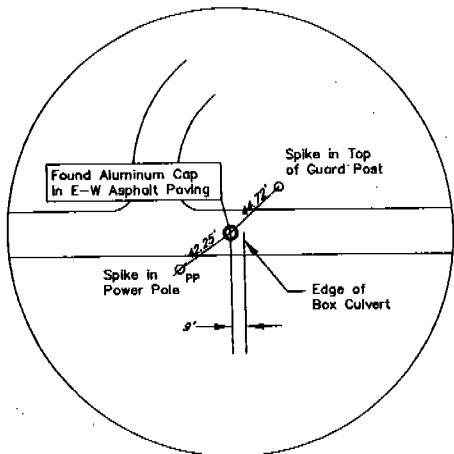
TIE DETAIL 'A'
 Not to Scale



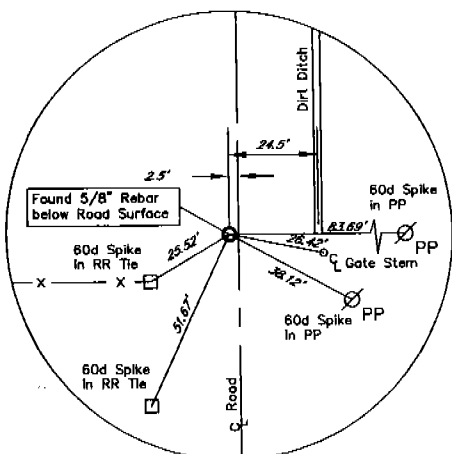
TIE DETAIL 'B'
 Not to Scale



TIE DETAIL 'C'
 Not to Scale



TIE DETAIL 'D'
 Not to Scale



TIE DETAIL 'E'
 Not to Scale

OWNER'S STATEMENT

We, Kevin C. Adams and Karlana Adams, husband and wife, being the owners of the tract of land described in the foregoing "Legal Description" and "Surveyor's Certificate", have caused such real estate to be platted as:

LOTS 1 & 2, NINE MILE VALLEY SUBDIVISION, SCOTTS BLUFF COUNTY, NEBRASKA.

The foregoing plat is made with the free consent and in accordance with the desires of the undersigned owners.

Dated this 16th day of December, 1998.

Kevin C. Adams
 Kevin C. Adams

Karlana Adams
 Karlana Adams

Deed of Trust Trustee/Beneficiary
 COMMUNITY FIRST NATIONAL BANK
 Alliance, Nebraska

Dated this 15 day of DECEMBER, 1998.

By: *[Signature]*

Attest: *[Signature]*

ACKNOWLEDGMENT

State of Nebraska }
 County of Scotts Bluff } ss.

Before me, a Notary Public, qualified and acting in said County, personally came Kevin C. Adams and Karlana Adams, husband and wife, know to me to be the identical persons who signed the foregoing "Owner's Statement" and acknowledged the execution thereof to be their voluntary act and deed.

WITNESS MY HAND AND NOTARIAL SEAL this 16th day of December, 1998.

[Signature]
 Notary Public

GENERAL NOTARY - State of Nebraska
 SANDI STRICKER
 My Comm. Exp. May 21, 2001

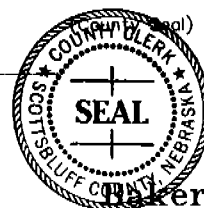
APPROVAL AND ACCEPTANCE

The foregoing plat of LOTS 1 & 2, NINE MILE VALLEY SUBDIVISION, SCOTTS BLUFF COUNTY, NEBRASKA, is hereby approved and accepted by the Scotts Bluff County Board of Commissioners by Resolution passed this 17th day of May, 1999, conditioned upon the fact no new streets or alleys are being added by this plat.

SCOTTS BLUFF COUNTY BOARD OF COMMISSIONERS

[Signature]
 Chairman

Attest: *[Signature]*
 County Clerk



Prepared by
Stricker & Associates
 Engineers Planners Consultants
 Scottsbluff, Nebraska
 November, 1998
 AutoCAD File: ADAMS.DWG