

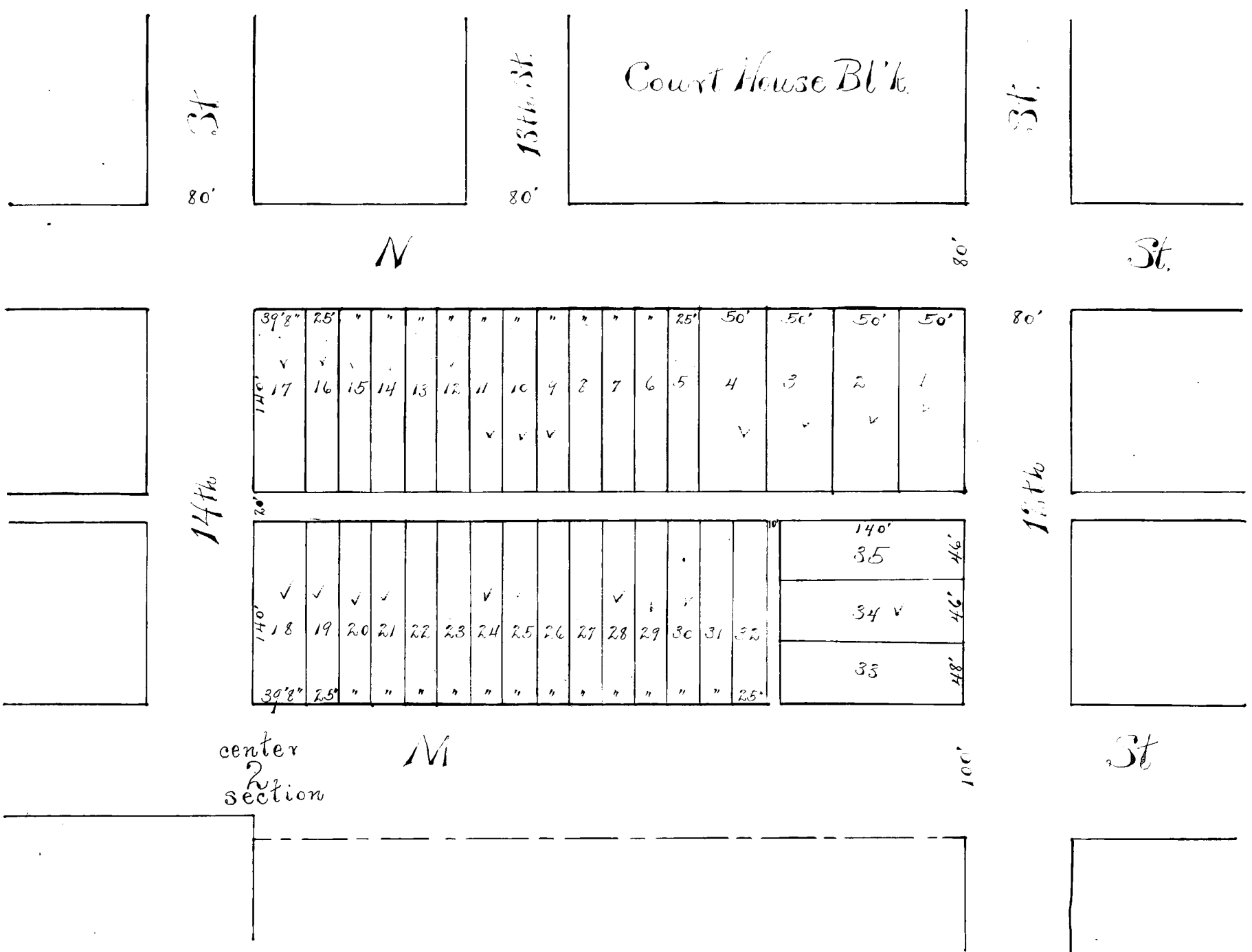
DEED RECORD X, SCOTTS BLUFF COUNTY

10294—KLOPP & BARTLEY CO., PRINTING, STATIONERY, COUNTY AND SCHOOL SUPPLIES, OMAHA

Oscar W. Gardner and wife,
TO
The Public.

STATE OF NEBRASKA, COUNTY OF SCOTTS BLUFF, SS.
Entered on Numerical Index and filed for record in the
Clerk's Office the 15 day of April, 1916, at 1:10 P. M.
and recorded in Book "X" of Deeds on Page 237.
J. H. Ferguson, County Clerk.
BY: L. O. McHenry, Deputy.

SOUTH COURT PLACE, GERING, NEB.
April, 15, 1916.



I HEREBY CERTIFY, that on the 27th day of March, A. D. 1916, I surveyed and sub-divided the tract of land on the foregoing plat shown and designated as South Court Place in the City of Gering, into lots, streets and alleys as thereon shown; that said tract is a part of the South-west Quarter of the North-east Quarter of Section Two (2) in Township Twenty-one (21) North, of Range Fifty-five (55) West of the 6th Principal Meridian and particularly described as beginning at a point Fifty (50) feet North of the Center of said Section Two (2) which said center was established by the County Surveyor of Scotts Bluff County, Nebraska, and by him marked with a Two inch gas pipe set vertically in the ground; said tract of land extending from thence North 300 feet to N. Street; thence East along the South side of N Street a distance of about 540 feet to 12th street; thence South along the West line of 12th street 300 feet to M Street; thence West along the North side of M to the point of beginning; that said lots are numbered consecutively from 1 to 35 inclusive and the dimensions of each are shown thereon; that the width of the streets and alleys are marked on said plat. The corners of said tract are marked by Two-inch square oak stakes Two feet long driven well into the ground and the corners of all lots are marked by 3/4 x 2 x 12 inch pine stakes driven at each corner thereof, and the exact line and corner of each is designated by a nail driven in the top of each stake.

O. W. Gardner,
Surveyor.