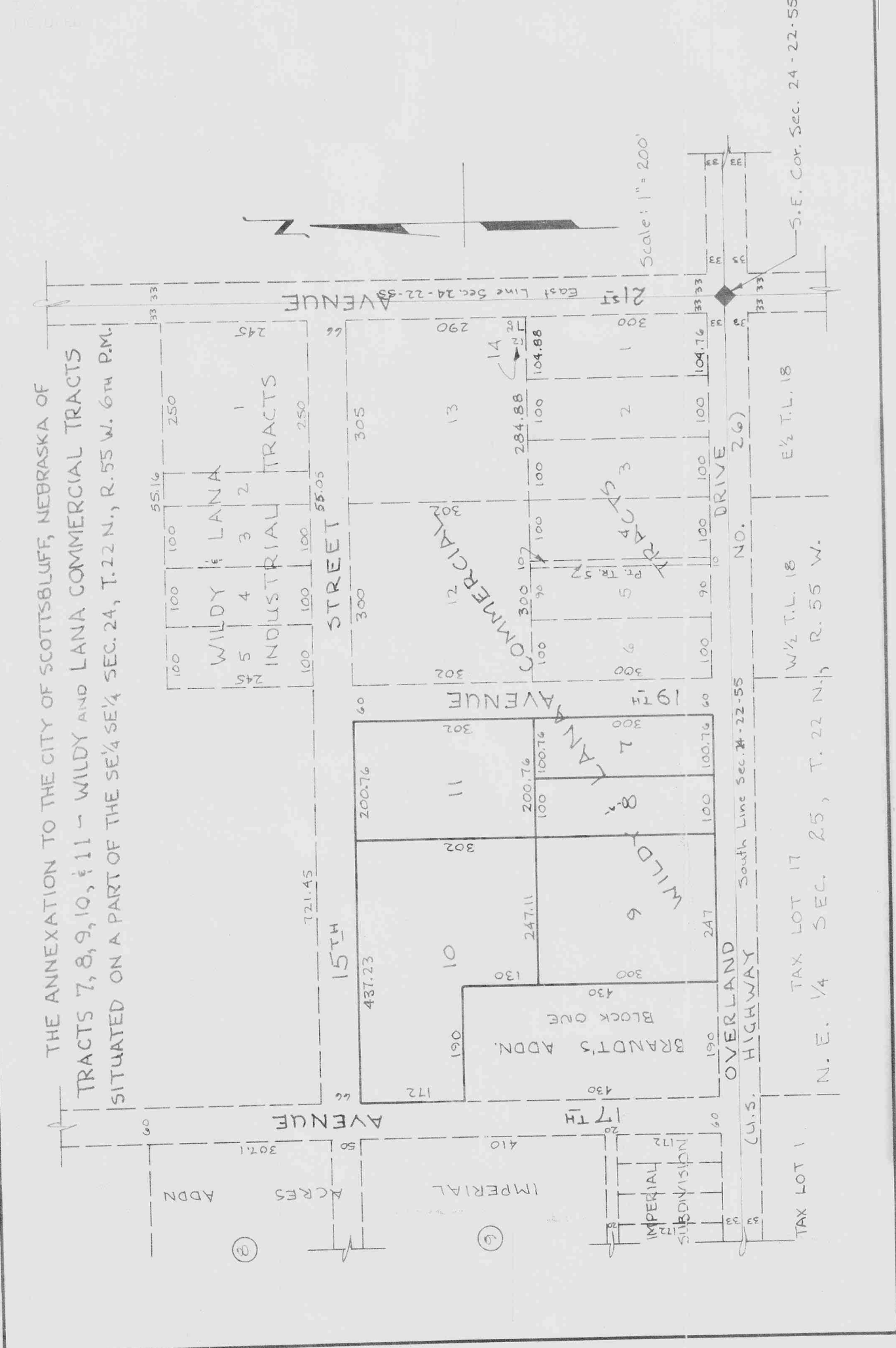


STATE OF NEBRASKA, } SS  
SCOTTS BLUFF COUNTY }  
Entered on Numerical Index and filed for record  
the 11 day of March 1957 at 11:57  
o'clock A.M., and recorded in Book 26 of  
1957 on Page 17  
By W. D. Fisher Deputy  
REGISTER OF DEEDS

THE ANNEXATION TO THE CITY OF SCOTTSBLUFF, NEBRASKA OF  
TRACTS 7, 8, 9, 10, & 11 - WILDY AND LANA COMMERCIAL TRACTS  
SITUATED ON A PART OF THE SE 1/4 SEC. 24, T. 22 N., R. 55 W. 6TH P.M.



TAX LOT 1  
N.E. 1/4 SEC. 25, T. 22 N., R. 55 W.  
W 1/2 T.L. 18  
E 1/2 T.L. 18  
S.E. Cor. Sec. 24 - 22-55



89

17



Page Two of:

THE ANNEXATION TO THE CITY OF SCOTTSBLUFF, NEBRASKA OF TRACTS 7, 8, 9, 10, & 11 - WILDY AND LANA COMMERCIAL TRACTS SITUATED ON A PART OF THE SE 1/4 SE 1/4 SEC. 24, T. 22 N., R. 55 W. 6TH P.M.

- ANNEXATION -

The undersigned, being the owners of Tracts 7, 8, 9, 10, & 11 of WILDY AND LANA COMMERCIAL TRACTS, according to the plat thereof as recorded in the office of the Register of Deeds, Scotts Bluff County, Nebraska do hereby annex to and make a part of the City of Scottsbluff, Nebraska, the real estate shown on such plat, a copy of which is attached hereto.

Dated this 16th day of May, 1959.

THE BERGE CORPORATION, INC. (A Corporation)

By Gail B. Berge President

(SEAL)

Attest: Virginia L. Berge Secretary

- ACKNOWLEDGEMENT -

STATE OF NEBRASKA } SS: SCOTTS BLUFF COUNTY }

On this 16 day of May, 1959, before me, the undersigned, a Notary Public, in and for said county, personally came Gail Berge, President, and Virginia L. Berge, Secretary of Berge Corporation, Inc., a corporation, to me known to be the identical persons whose names are affixed to the foregoing annexation as officers of such Corporation, respectively, and acknowledged the same to be the voluntary act and deed of such Corporation and their voluntary acts and deeds as such officers of such Corporation.

WITNESS MY HAND AND SEAL the day and year last above written.

My Commission Expires: Oct 8, 1963

Patsy J Bergina Notary Public

(SEAL)

- ACCEPTANCE -

The attached plat and annexation approved and accepted by the Mayor and City Council of the City of Scottsbluff, Nebraska, by resolution duly passed on this 25th day of May, 1959.

Mayor

Attest: Richard D. Thomas Deputy City Clerk

(SEAL)