

STATE OF NEBRASKA, } SS  
 SCOTTS BLUFF COUNTY }  
 Entered on Numerical Index and filed for record  
 the 3 day of April, 1958, at 7:21  
 o'clock A.M. and recorded in Book 72 of  
Deeds on Page 97  
Alma L. Marx  
 REGISTER OF DEEDS  
 By \_\_\_\_\_ Deputy

77983  
 W 1/2 of BLOCK 6  
**SUMNER - SMITH ADDITION**  
 TO GERING, NEBRASKA

SURVEYOR'S CERTIFICATE

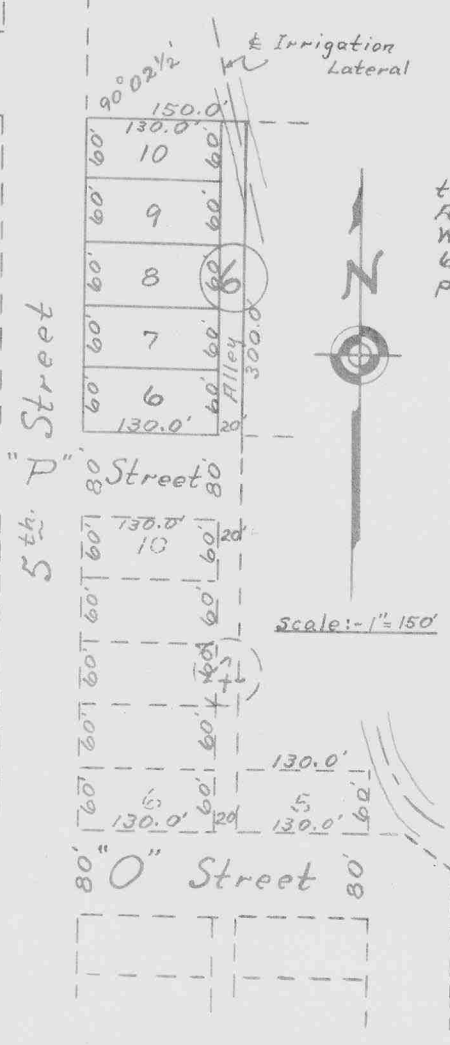
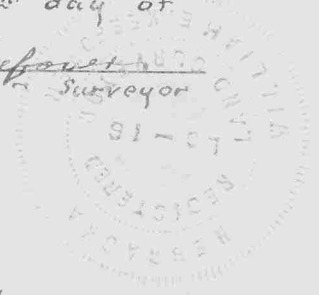
I hereby certify that I have accurately surveyed the West Half of Block 6, Sumner - Smith Addition to Gering, Nebraska, on part of the W 1/2 NW 1/4 of Section 1, Tp. 21 N., R 55 W. of the 6th P.M. Scotts Bluff County, Nebraska, more particularly described as follows:-

Beginning at the intersection of the north line of "P" Street and the east line of 5th Street, said point being 80 feet North of the Northwest corner of Block 4 of Sumner - Smith Addition:-  
 Thence North on a line which is the West line of Blocks 1, 2 and 4, Sumner - Smith Addition to Gering, Nebraska, extended North, for a distance of 300.0 feet;  
 Thence East parallel with the North line of "P" street in Sumner - Smith Addition, for a distance of 150.0 feet;  
 Thence South parallel with the West line of said Blocks 1, 2 and 4, Sumner - Smith Addition to Gering, Nebraska, for a distance of 300.0 feet;  
 Thence West along North Line of "P" Street for a distance of 150.0 feet to the point of beginning.

This plat is a correct delineation of said survey, drawn to the scale of 150 feet to the inch. Addition and all lot corners are marked with 3/8" x 3/4" Iron Rods driven flush with the ground. Lots are numbered 6 to 10 inclusive, and each lot bears its own number.

WITNESS my hand this 26th day of April, 1958.

W. E. Keefover  
 W. E. Keefover - Surveyor



DEDICATION

KNOW ALL MEN BY THESE PRESENTS:-

That the undersigned Mae E. Sumner, Widow, is the owner of that part of the W 1/2 NW 1/4 Section 1, Tp. 21 N., R 55 W. of the 6th P.M. Scotts Bluff County, Nebraska, on which the W 1/2 of Block 6, Sumner - Smith Addition to the City of Gering, Nebraska, is located.

That said owner has caused said land to be surveyed and platted as the W 1/2 of Block 6 SUMNER - SMITH ADDITION as shown by the above plat and surveyor's certificate. Streets and Alley as shown and designated on the plat, are hereby dedicated to the use and benefit of the public.

RESTRICTIONS numbered 1 through 7 as recorded July 20, 1955, in connection with Block 2 Sumner - Smith Addition, in the Official Records of Scotts Bluff County, Nebraska, Book 42 of Miscellaneous on Page 530, are hereby made a part of this instrument, to apply to the Lots of this platting the same as if they were written at large herein.

IN WITNESS WHEREOF the said owner has executed these presents this 28th day of April, 1958.

Mae E. Sumner

STATE OF NEBRASKA } SS  
 SCOTTS BLUFF COUNTY }

On this 28th day of April, 1958, before me, the undersigned, a Notary Public in and for said County, personally came Mae E. Sumner, Widow, to me personally known to be the identical person whose name is affixed to the foregoing plat and dedication, and acknowledged the same and the execution thereof to be her voluntary act and deed.

IN TESTIMONY WHEREOF I have hereunto set my hand and affixed my seal the day and year last above written.

William J. Hoff  
 NOTARY PUBLIC

My Commission Expires June 24, 1959

The foregoing plat of W 1/2 of Block 6, Sumner - Smith Addition is approved and accepted by the City of Gering, Nebraska, as an addition to said City, this 29th day of April, 1958.

Attest Conrad G. Hoff  
 City Clerk

Earl A. Pollock  
 Mayor

