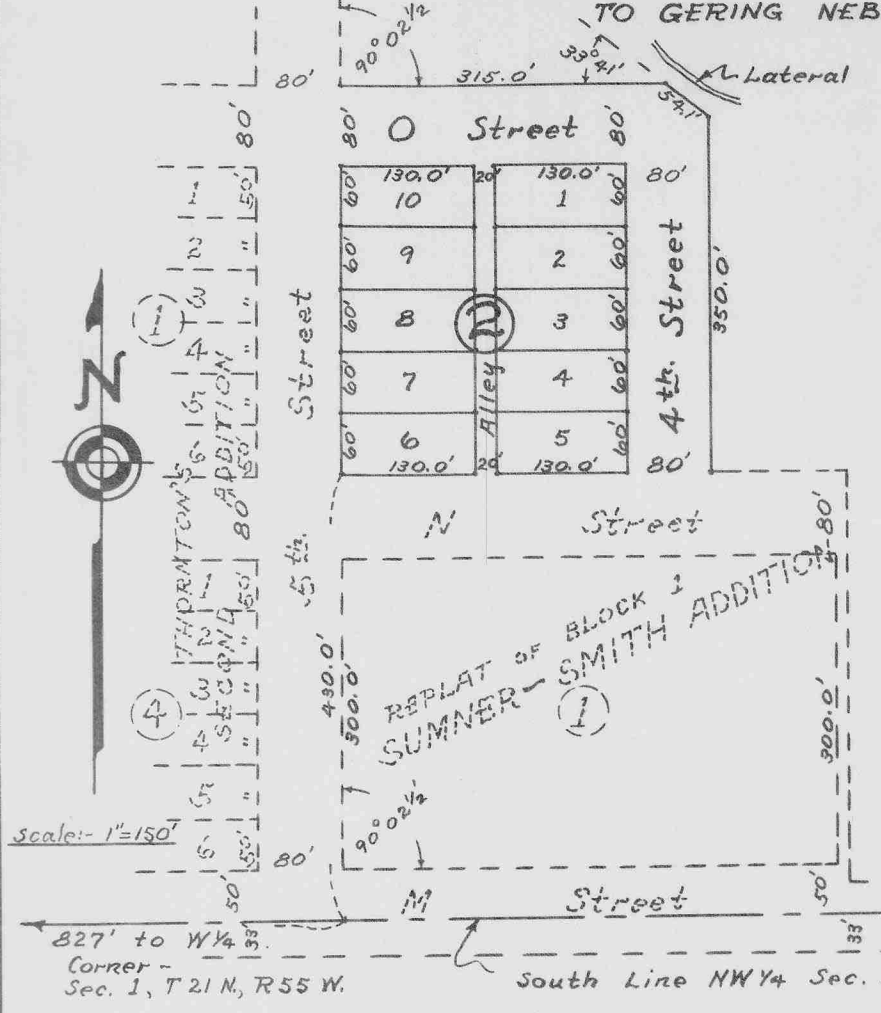


NUMERICAL GENERAL TAX REC. PICTURED 68129

STATE OF NEBRASKA, } SS  
SCOTTS BLUFF COUNTY }  
Entered on Numerical Index and filed for record  
the 22 day of July, 1955, at 11:47  
o'clock A.M. and recorded in Book 22 of  
Deeds on Page 550  
Alma K. Inay  
REGISTER OF DEEDS

### BLOCK 2 SUMNER - SMITH ADDITION



#### SURVEYOR'S CERTIFICATE

I, W.E. Keefover, a competent surveyor, in Scotts Bluff County, Nebraska, hereby certify that I have accurately surveyed Block 2, Sumner - Smith Addition to Gering, Nebraska, comprising part of the SW 1/4 NW 1/4 Section 1, Tp. 21 N, R 55 W. of the 6th P.M. Scotts Bluff County, Nebraska, more particularly described as follows:-

Beginning at a point 80.0 feet north of the northwest corner of Block 1, Sumner - Smith Addition to Gering, Nebraska, said point being 827.0 feet east of the west line of said SW 1/4 NW 1/4, and 430.0 feet north of the south line of said SW 1/4 NW 1/4;

Thence north, parallel with the west line of said SW 1/4 NW 1/4, for a distance of 380.0 feet;

Thence east, parallel with the south line of said SW 1/4 NW 1/4, for a distance of 315.0 feet;

Thence southeast, with a deflection to the right of 33° 41', for a distance of 54.1 feet;

Thence south, parallel with the west line of said SW 1/4 NW 1/4, for a distance of 350.0 feet;

Thence west, parallel with the south line of said SW 1/4 NW 1/4, for a distance of 360.0 feet, to the point of beginning.

This plat is a correct delineation of said survey, drawn to the scale of 150 feet to the inch. Block and outlining corners are marked with 5/8" x 48" iron rods, and all other lot corners are marked with 5/8" x 30" iron rods, all rods driven nearly flush with the ground. Dimensions are in feet and decimals, and each lot and block bears its own number.

Witness my hand this 2nd day of June, 1955.

W.E. Keefover  
Surveyor

#### DEDICATION

KNOW ALL MEN BY THESE PRESENTS:-

That the undersigned, Sumner - Smith Company, a partnership consisting of Mae Sumner and George Smith, is the owner of that portion of the SW 1/4 NW 1/4 of Section 1, Tp. 21 N, R-55 W. of the 6th P.M. Scotts Bluff County, Nebraska, on which Block 2, Sumner - Smith Addition to the City of Gering, Nebraska is located, and that the platting thereof as said addition, as shown by the above plat and described in the Surveyor's Certificate, is with the full knowledge and consent, and at the request of said partners. Streets and Alley as shown and designated on said plat, are hereby dedicated to the use and benefit of the public.

IN TESTIMONY WHEREOF, the above named owner has caused these presents to be executed by the said partners this 21st day of June, 1955.

SUMNER - SMITH COMPANY  
a partnership.

By Mae Sumner  
Partner

By George Smith  
Partner

STATE OF NEBRASKA } SS.  
SCOTTS BLUFF COUNTY }

On this 21st day of June, 1955, before me, the undersigned, a Notary Public, in and for said County, personally came Mae Sumner and George Smith, partners of Sumner - Smith Company, a partnership, to me known to be the partners of said Company and the identical persons whose names are affixed to the foregoing plat and Dedication, and acknowledged the same and the execution thereof to be their voluntary act and deed as such partners, and the voluntary act and deed of Sumner - Smith Company, a partnership.

Witness my hand and notarial seal the day and year last above written.

Commission Expires January 19, 1957

Ruth E. Sumner  
NOTARY PUBLIC

The foregoing plat of Block 2, Sumner - Smith Addition is approved and accepted by the City of Gering, Nebraska, as an addition to said City, this 21st day of June, 1955.

Attest Conrad C. Hoff  
City Clerk

Paul J. Schuch Council President  
Acting Mayor