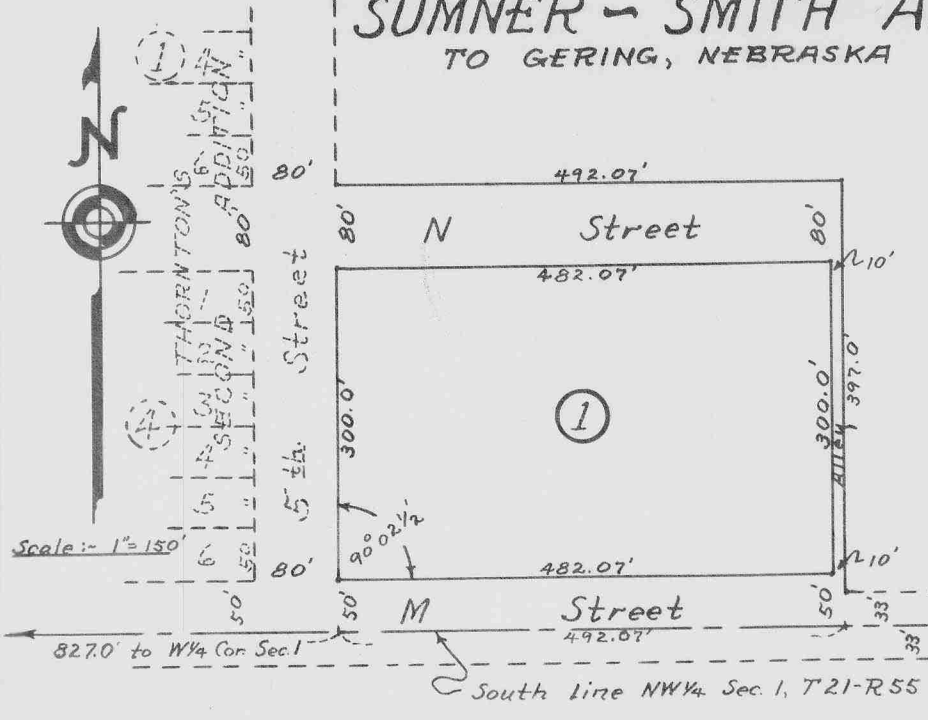


AD VALOREM
GENERAL
TAX RELEVANT
PLOTS

STATE OF NEBRASKA, } SS
SCOTTS BLUFF COUNTY }
Entered on Numerical Index and filed for record
the 22 day of July, 1955 at 10:46
o'clock A.M. and recorded in Book 82 of
Deeds on Page 549
W. E. Keefover
REGISTER OF DEEDS

REPLAT OF BLOCK 1 SUMNER - SMITH ADDITION TO GERING, NEBRASKA



SURVEYOR'S CERTIFICATE

I, W.E. Keefover, a competent surveyor, in Scotts Bluff County, Nebraska, hereby certify that I have accurately surveyed Replat of Block 1, Sumner - Smith Addition to Gering, Nebraska, comprising part of the SW 1/4 NW 1/4 Section 1, Tp. 21 N., R. 55 W. of the 6th P.M., Scotts Bluff County, Nebraska, more particularly described as follows:-

Beginning at a point 827.0 feet east of the west line of said SW 1/4 NW 1/4, and 33.0 feet north of the south line of said SW 1/4 NW 1/4;

Thence north, parallel with the west line of said SW 1/4 NW 1/4, for a distance of 397.0 feet;

Thence east, parallel with the south line of said SW 1/4 NW 1/4, for a distance of 492.07 feet;

Thence south, parallel with the west line of said SW 1/4 NW 1/4, for a distance of 397.0 feet;

Thence west, parallel with the south line of said SW 1/4 NW 1/4, for a distance of 492.07 feet, to the point of beginning.

This plat is a correct delineation of said survey, drawn to the scale of 150 feet to the inch. Block corners are marked with 3/4" x 24" iron rods, and the north corners of the tract are marked with 5/8" x 48" iron rods driven nearly flush with the ground. Dimensions are shown in feet and decimals.

Witness my hand this 28th day of May, 1955.
W. E. Keefover
Surveyor

DEDICATION

KNOW ALL MEN BY THESE PRESENTS: -

That the undersigned, Sumner-Smith Company, a partnership consisting of Mae Sumner and George Smith, is the owner of that portion of the SW 1/4 NW 1/4 of Section 1, Tp. 21 N., R-55 W. of the 6th P.M. Scotts Bluff County, Nebraska, on which Replat of Block 1, Sumner - Smith Addition to the City of Gering, Nebraska is located, and that the platting thereof as said addition, as shown by the above plat and described in the Surveyor's Certificate, is with the full knowledge and consent, and at the request of said partners. Streets and alley, as shown and designated on said plat, are hereby dedicated to the use and benefit of the public.

IN TESTIMONY WHEREOF, the above named owner has caused these presents to be executed by the said partners this 21st day of June 1955.

SUMNER - SMITH COMPANY
a partnership

By Mae Sumner
partner

By George Smith
partner

STATE OF NEBRASKA } SS.
SCOTTS BLUFF COUNTY }

On this 21st day of June 1955, before me, the undersigned, a Notary Public, in and for said County, personally came Mae Sumner and George Smith, partners of Sumner-Smith Company, a partnership, to me known to be the partners of said Company and the identical persons whose names are affixed to the foregoing plat and Dedication, and acknowledged the same and the execution thereof to be their voluntary act and deed as such partners, and the voluntary act and deed of Sumner-Smith Company, a partnership.

Witness my hand and notarial seal the day and year last above written.

Commission Expires July 19, 1957

Leita A. Dinius
NOTARY PUBLIC

The foregoing Replat of Block 1, Sumner - Smith Addition is approved, by resolution, by the City of Gering, Nebraska this 5th day of July, 1955

Attest Orval G. Hoff
City Clerk

Paul Johnson Council President
Acting Mayor

