

Vacation Pt First Ave - Misc 70-366

Vacation Pt Second Avenues - Misc. 132-251

STATE OF NEBRASKA } SS.  
SCOTTS BLUFF COUNTY }  
ENTERED ON NUMERICAL INDEX AND FILED FOR  
RECORD THE 11 DAY OF SEPTEMBER 1952 AT 2:45  
O'CLOCK P.M. AND RECORDED IN BOOK 73 OF DEEDS  
ON PAGE 378.  
Alma L. Juxar  
REGISTER OF DEEDS

57241

58517

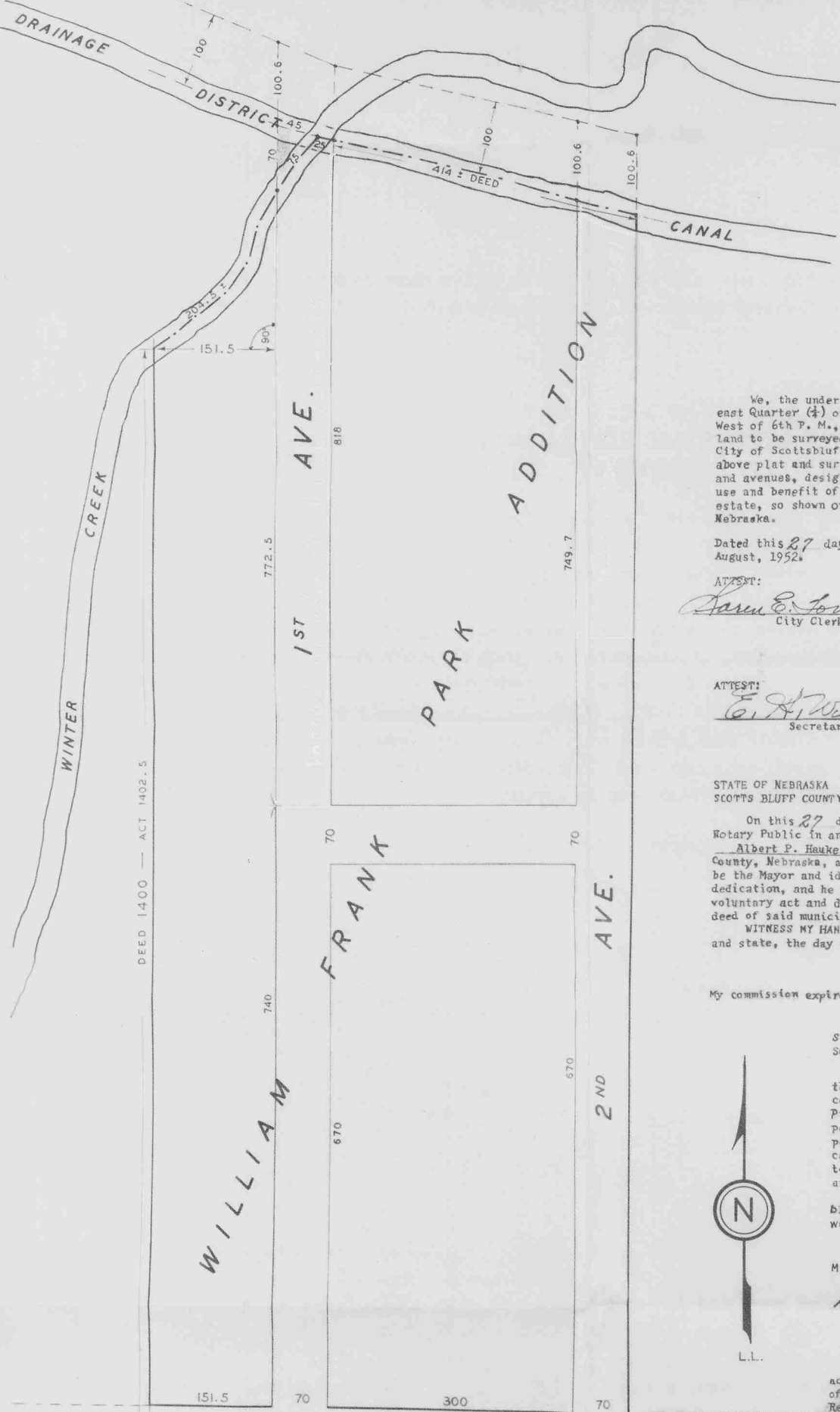
STATE OF NEBRASKA } SS.  
SCOTTSBLUFF COUNTY }  
ENTERED ON NUMERICAL INDEX AND FILED  
FOR RE-RECORDING TO SHOW CORRECTIONS, ON  
FEBRUARY 7, 1953, AT 10:00 AM. RECORDED  
IN DEED BOOK 75, AT PAGE 29.

58517

Alma L. Juxar  
REGISTER OF DEEDS

# WILLIAM FRANK PARK ADDITION

TO THE CITY OF SCOTTSBLUFF, SCOTTS BLUFF COUNTY, NEBRASKA.



### ENGINEER'S CERTIFICATE

STATE OF NEBRASKA ) SS.  
SCOTTS BLUFF COUNTY )

I, E. Y. Grupe, a competent surveyor of Scotts Bluff County, Nebraska, hereby certify that I have accurately surveyed William Frank Park Addition to the City of Scottsbluff, Scotts Bluff County, Nebraska, located in the Southeast Quarter (1/4) of Section Fourteen (14) Township 22 North, Range 55 West of 6th P. M.: that the above plat is a correct delineation of said survey, drawn to a scale of 100 feet to an inch.

Dated this 27 day of August, 1952.  
E. Y. Grupe  
E. Y. Grupe, Engineer - Reg. No. 10

### DEDICATION

We, the undersigned, being the owner of a part of the Southeast Quarter (1/4) of Section Fourteen (14) Township 22 North, Range 55 West of 6th P. M., Scotts Bluff County, Nebraska, have caused said land to be surveyed and platted as William Frank Park Addition to the City of Scottsbluff, Scotts Bluff County, Nebraska, as shown by the above plat and surveyor's certificate. We hereby dedicate the streets and avenues, designated upon and referred to in the said plat, to the use and benefit of the public, and we hereby annex and make said real estate, so shown on said plat, a part of the City of Scottsbluff, Nebraska.

Dated this 27 day of August, 1952.

City of Scottsbluff, Nebraska  
A Municipal Corporation

By: Albert P. Hauke  
Mayor

ATTEST:  
Sam E. Townsend  
City Clerk

Calvary Lutheran Church

By: Albert P. Hauke  
President

ATTEST:  
E. H. Wenzel  
Secretary

### ACKNOWLEDGMENT

STATE OF NEBRASKA )  
SCOTTS BLUFF COUNTY) SS.

On this 27 day of August, 1952, before me, the undersigned, a Notary Public in and for said county, personally came, Albert P. Hauke, Mayor of the City of Scottsbluff, Scotts Bluff County, Nebraska, a municipal corporation, to me personally known to be the Mayor and identical person whose name is affixed to the above dedication, and he acknowledged the execution thereof to be his voluntary act and deed as such officer, and the voluntary act and deed of said municipal corporation.

WITNESS MY HAND AND NOTARIAL SEAL at Scottsbluff, in said county and state, the day and year last above mentioned.

A. L. Ferguson  
Notary Public

My commission expires: September 13, 1955

STATE OF NEBRASKA ) SS.  
SCOTTS BLUFF COUNTY )

On this 27 day of August, 1952, before me, the undersigned, a notary public in and for said county, personally came Albert P. Hauke President of the Calvary Lutheran Church, to me personally known to be the president and identical person whose name is affixed to the above dedication, and he acknowledged the execution thereof to be his voluntary act and deed as such officer, and the voluntary act and deed of said corporation.

WITNESS MY HAND AND NOTARIAL SEAL at Scotts Bluff, in said county, the day and year last above written.  
A. L. Ferguson  
Notary Public

My commission expires: September 13, 1955

Approved by Zoning Board this 29 day of August, 1952.

W. C. Boston  
Chairman of Board

The above plat and dedication approved and accepted by the Mayor and City Council of the City of Scottsbluff, Scotts Bluff County, Nebraska, by Resolution duly passed this 2 day of SEPT.

Sam E. Townsend City Clerk  
Albert P. Hauke Mayor

BEGINNING AT THE SOUTH WEST CORNER OF THE SOUTH EAST 1/4 SECTION 14 T. 22 N. R. 55 W.

MEASUREMENT CORRECTED FEB. 6, 1953

PIONEER PARK

1" = 100'

57241  
58517