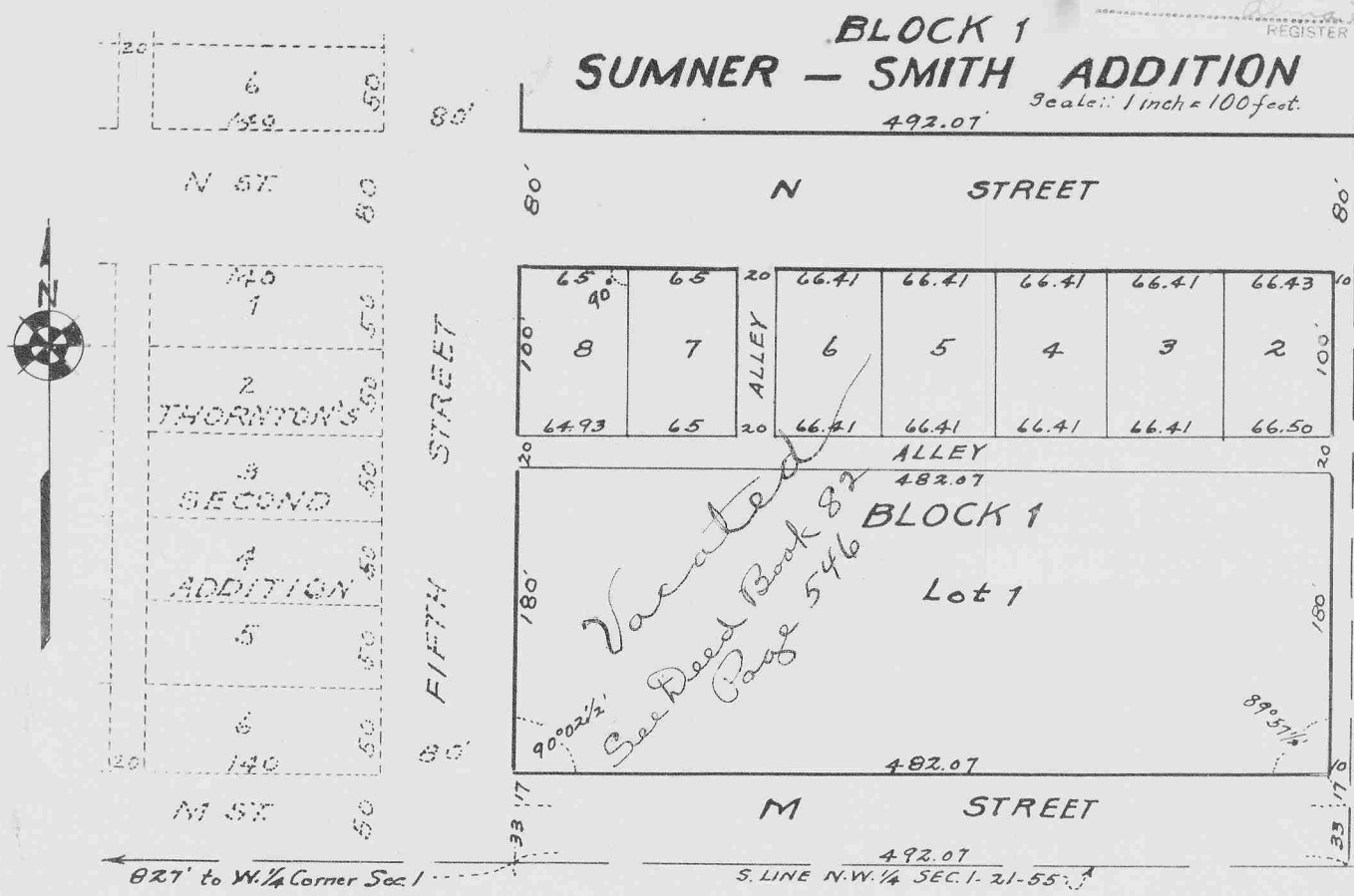


57884

STATE OF NEBRASKA, 1 SS
SCOTTS BLUFF COUNTY
Entered on Numerical Index and filed for record
the 31 day of October, 1952, at 2:20
o'clock P.M., and recorded in Book 27 of
Platbooks on Page 95
REGISTER OF DEEDS

95



SURVEYOR'S CERTIFICATE

This is to certify that on October 6th, 1952, the BLOCK 1 of SUMNER-SMITH ADDITION to the City of Gering, Nebraska was surveyed under my supervision; and that the said Addition comprises that portion of the S.W. 1/4 N.W. 1/4 of Section 1, Tp. 21 N., R. 55 W. of the 6th P.M. described as follows:

Beginning at a point which is 827 feet east of the west line of said S.W. 1/4 N.W. 1/4, and 93 feet north of the south line of said S.W. 1/4 N.W. 1/4;
Thence north, parallel with the west line of said S.W. 1/4 N.W. 1/4, for a distance of 397 feet;
Thence east, parallel with the south line of said S.W. 1/4 N.W. 1/4, for a distance of 492.07 feet;
Thence south, parallel with the west line of said S.W. 1/4 N.W. 1/4, for a distance of 397 feet;
Thence west, parallel with the south line of said S.W. 1/4 N.W. 1/4, for a distance of 492.07 feet to the point of beginning;

That the above plat is a correct delineation of said survey, drawn to a scale of 100 feet to the inch, and that 3/4-inch by 24-inch iron rods are driven nearly flush with the ground at the corners of each lot and at the north corners of the tract, and that dimensions of lots, streets, and alleys, are indicated on the plat in feet and decimals; and that each lot bears its own number.

IN WITNESS WHEREOF, I have set my hand this 21st day of October, 1952.

O.W. Finley, Surveyor.

DEDICATION

KNOW ALL MEN BY THESE PRESENTS:

That the undersigned, Sumner-Smith, a partnership, consisting of Mae Sumner and George Smith, and Sumner-Smith Company, consisting of Mae Sumner and George Smith, are the owners of that portion of the S.W. 1/4 N.W. 1/4 of Section 1, Tp. 21 N., R. 55 W. of the 6th P.M. in Scotts Bluff County, Nebraska, on which BLOCK 1, SUMNER-SMITH ADDITION to the City of Gering, Nebraska, is located; and that the platting thereof as said Addition, as shown in the above plat and described in the above Surveyor's Certificate, is with the full knowledge and consent, and at the request, of said owners; and that the said owners do hereby dedicate the streets and alleys, shown on the said plat, to the Public Use.

IN TESTIMONY WHEREOF, the above named owners have executed these presents this 21th day of October, 1952.

SUMNER-SMITH, a partnership,

SUMNER-SMITH COMPANY, a partnership,

By Mae Sumner
Partner

By Mae Sumner
Partner

By George Smith
Partner

By George Smith
Partner

STATE OF NEBRASKA } SS,
SCOTTS BLUFF COUNTY }

On this 21th day of October, 1952, before me, the undersigned Notary Public in and for said County, personally came Mae Sumner and George Smith, partners of Sumner-Smith, a partnership, and of Sumner-Smith Company, a partnership, to me personally known to be partners of Sumner-Smith, a partnership, and of Sumner-Smith Company, a partnership, and the identical persons whose names are affixed to the above Dedication, and acknowledged the execution of said Dedication to be their voluntary act and deed as such partners, and the voluntary act and deed of said Sumner-Smith, a partnership, and of Sumner-Smith Company, a partnership.

IN TESTIMONY WHEREOF, I have hereunto set my hand and affixed my Notarial Seal the day and year last above written.

My Commission expires Aug 19, 1958

M. Conrad
NOTARY Public

TO WHOM IT MAY CONCERN:

The above plat of BLOCK 1, SUMNER-SMITH ADDITION to the City of Gering, Nebraska, was presented to the City Council of said City, and was approved by said City Council, as an addition to said City, on the 28th day of October, 1952.

Attest Conrad G. Hoff
City Clerk

H. J. Janner
Mayor