

# DEED RECORD No. 64

SCOTTS BLUFF COUNTY, NEBRASKA

NOTE: See Ordinance #3552, vacating Lots 18 & 19, Block 1, Westmoor Add. & Part of Schmid Drive and Plat of vacated

COURIER PRESS, GERING, NEBR.

portions as Lots 1 & 2, Foursquare Subdivision, Deed 214-668

Frank A. Schmid and  
C. Emma Schmid

to

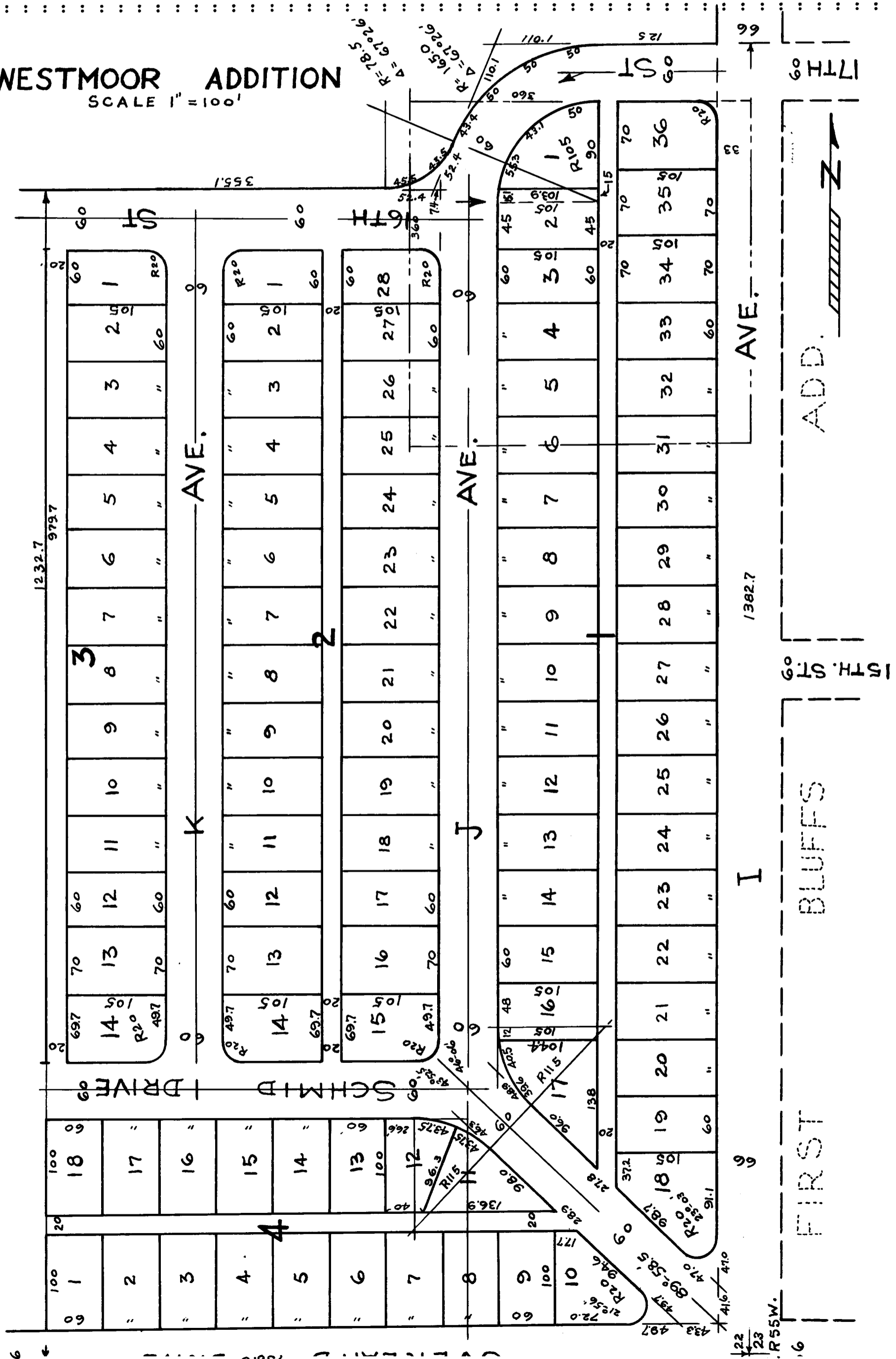
The Public

State of Nebraska, Scotts Bluff County, ss.  
Entered on Numerical Index and filed  
for record the 31 day of August 1950 at  
11:07 o'clock A.M. and recorded in Book 64  
of Deeds on Page 466

Alma L. Truax, Register of Deeds

## WESTMOOR ADDITION

SCALE 1" = 100'



# DEED RECORD No. 64

SCOTTS BLUFF COUNTY, NEBRASKA

COURIER PRESS, GERING, NEBR.

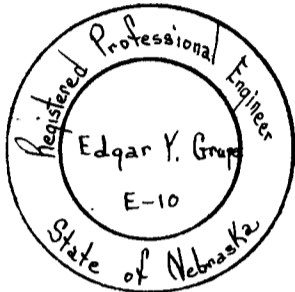
### ENGINEER'S CERTIFICATE

STATE OF NEBRASKA )  
SCOTTS BLUFF COUNTY) ss.

I, F. Y. Grupe, a competent surveyor, of Scotts Bluff County, Nebraska, hereby certify that I have accurately surveyed Westmoor Addition, situated on part of the East Half of the Southeast Quarter (E½SE¼) of Section Twenty-two (22), Township Twenty-two (22) North, Range Fifty-five (55) West of the 6th P.M., Scotts Bluff County, Nebraska. That the above plat is a correct delineation of said survey, drawn to a scale of 100 feet to one inch. Iron pins are driven into the ground at the front and rear-corners of each lot. Each lot bears its own number.

Witness my hand this 15th day of August, 1950.

E. Y. Grupe  
Engineer-Reg. No. E-10



### DEDICATION

We, Frank A. Schmid and C. Emma Schmid, husband and wife, being the owners of a part of the East Half of the Southeast Quarter (E½SE¼) of Section Twenty-two (22), Township Twenty-two (22) North, Range Fifty-five (55), West of the 6th P.M., Scotts Bluff County, Nebraska, have caused said land to be surveyed and platted as Westmoor Addition to the City of Scottsbluff, Nebraska, as shown by the above plat and Surveyor's Certificate. We hereby dedicate the streets, avenues and alleys designated upon and referred to in said plat to the use and benefit of the public and we hereby annex and make said real estate, so shown on said plat, a part of the City of Scottsbluff, Scotts Bluff County, Nebraska, to be known as Westmoor Addition to the City of Scottsbluff, Nebraska.

Dated this 15th day of August, 1950.

Frank A. Schmid

C. Emma Schmid

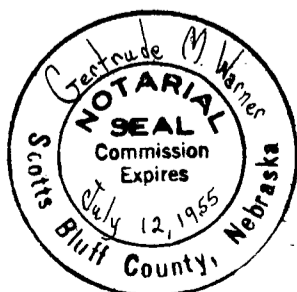
STATE OF NEBRASKA )  
SCOTTS BLUFF COUNTY) ss.

Now on this 15th day of August, 1950, before me the undersigned, a Notary Public, in and for said county, personally came Frank A. Schmid and C. Emma Schmid, husband and wife, to me known to be the identical persons whose names are affixed to the foregoing plat and dedication and acknowledged the same to be their voluntary act and deed.

Witness my hand and Notarial Seal the day and year last above written.

Gertrude M. Warner  
Notary Public

My Commission Expires: July 12, 1955.



AEA974

