

# DEED RECORD No. 64

SCOTTS BLUFF COUNTY, NEBRASKA

COURIER PRESS, GERING, NEBR.

Orville L. Sandberg and  
Lois L. Sandberg

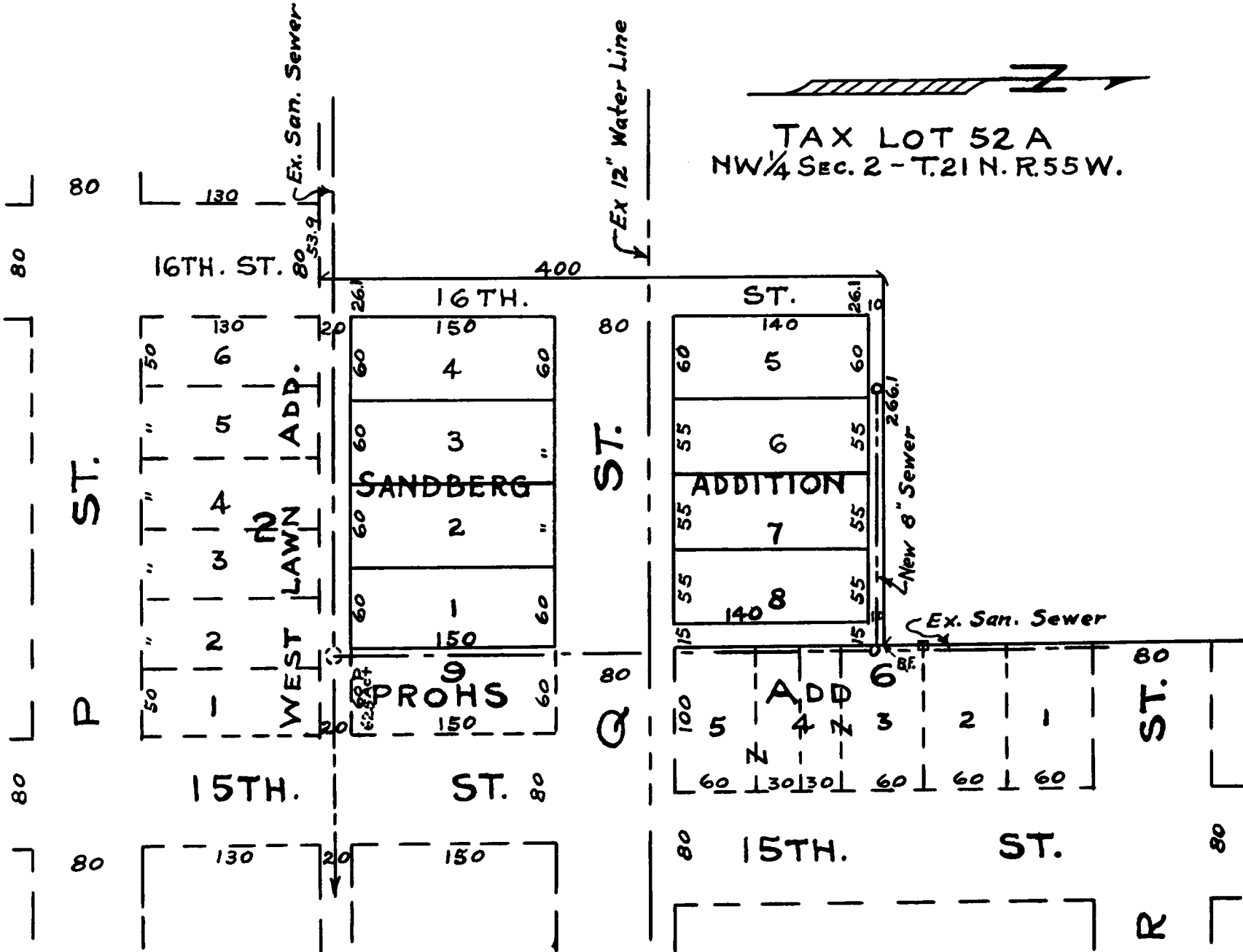
to

The Public

State of Nebraska, Scotts Bluff County, ss.  
Entered on Numerical Index and filed  
for record the 7 day of April 1950 at  
10:30 o'clock A.M. and recorded in Book  
64 of Deeds on Page 250

Alma L. Truax, Register of Deeds

.....



I certify that on the 23rd day of March, 1950, I surveyed Sandberg Addition to the City of Gering, Nebraska, located in Tax Lot 52A in the North West Quarter (NW $\frac{1}{4}$ ) Section 2, Township 21 North, Range 55 West of the 6th P.M., more fully described as follows:

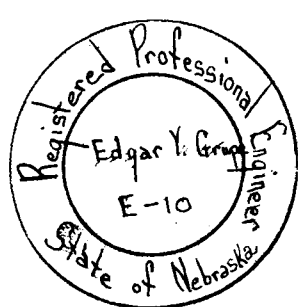
Beginning at the Northwest Corner, Lot Five (5), Block Six (6), Prohs Addition of Gering, Scotts Bluff County, Nebraska; thence North a distance of 90 feet along the West line of Block Six (6), Prohs Addition; thence West a distance of 266.1 feet; thence South to the North line of West Lawn Addition extended; thence East on the North line of West Lawn Addition to a point 60 feet West of the West Line of 15th Street; thence North along the West line of Prohs Addition to the point of beginning.

And this plat is a true delineation of said survey drawn to a scale of one inch equals one hundred feet. The width of the streets and alleys and the dimensions of the lots are indicated on the plat in feet and decimals, and each block and lot bears its own number. A steel stake has been driven at each corner of each lot.

Witness my hand this 23rd day of March, 1950.

E. Y. Grupe  
E. Y. Grupe, Engineer

Reg. No. E 10



# DEED RECORD No. 64

SCOTTS BLUFF COUNTY, NEBRASKA

COURIER PRESS, GERING, NEBR.

## DEDICATION

We, the undersigned, being the owners of part of Tax Lot 52A in the NW $\frac{1}{4}$  Sec. 2 T21, N. Range 55 W 6th P.M., Scotts Bluff County, Nebraska, have caused said land to be surveyed and platted as Sandberg Addition to the City of Gering, Scotts Bluff County, Nebraska, as shown by the plat and the Surveyor's Certificate hereon, and the streets and alleys so surveyed and designated are hereby dedicated to the public use.

Dated this 4th day of April, 1950.

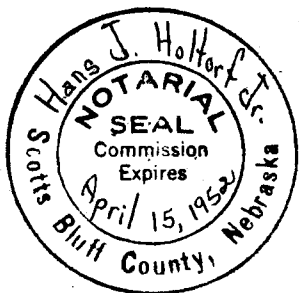
Orville L. Sandberg  
Lois L. Sandberg  
Owners

STATE OF NEBRASKA )  
                          : ss  
SCOTTS BLUFF COUNTY)

On this 4th day of April, 1950, before me, the undersigned, a Notary Public in and for said County, personally appeared Orville L. Sandberg and Lois L. Sandberg, husband and wife to me known to be the identical persons whose names are affixed to the foregoing plat and dedication and acknowledged the execution of the same to be their voluntary act and deed.

WITNESS my hand and Notarial Seal the Day and Year last above written.

Hans J. Holtorf Jr.  
Notary Public



HANS J. HOLTORF JR.  
Notary Public  
Commission Expires April 15, 1952

This plat was submitted and approved by the Mayor and City Council of the City of Gering, Nebraska, the 4th day of April, 1950

F. R. Warden  
Mayor

ATTEST:

Conrad C. Hoff  
City Clerk



# # # # # # # #

AEA974