

DEED RECORD No. 64

SCOTTS BLUFF COUNTY, NEBRASKA

COURIER PRESS, GERING, NEBR.

L. W. Cox and Co.

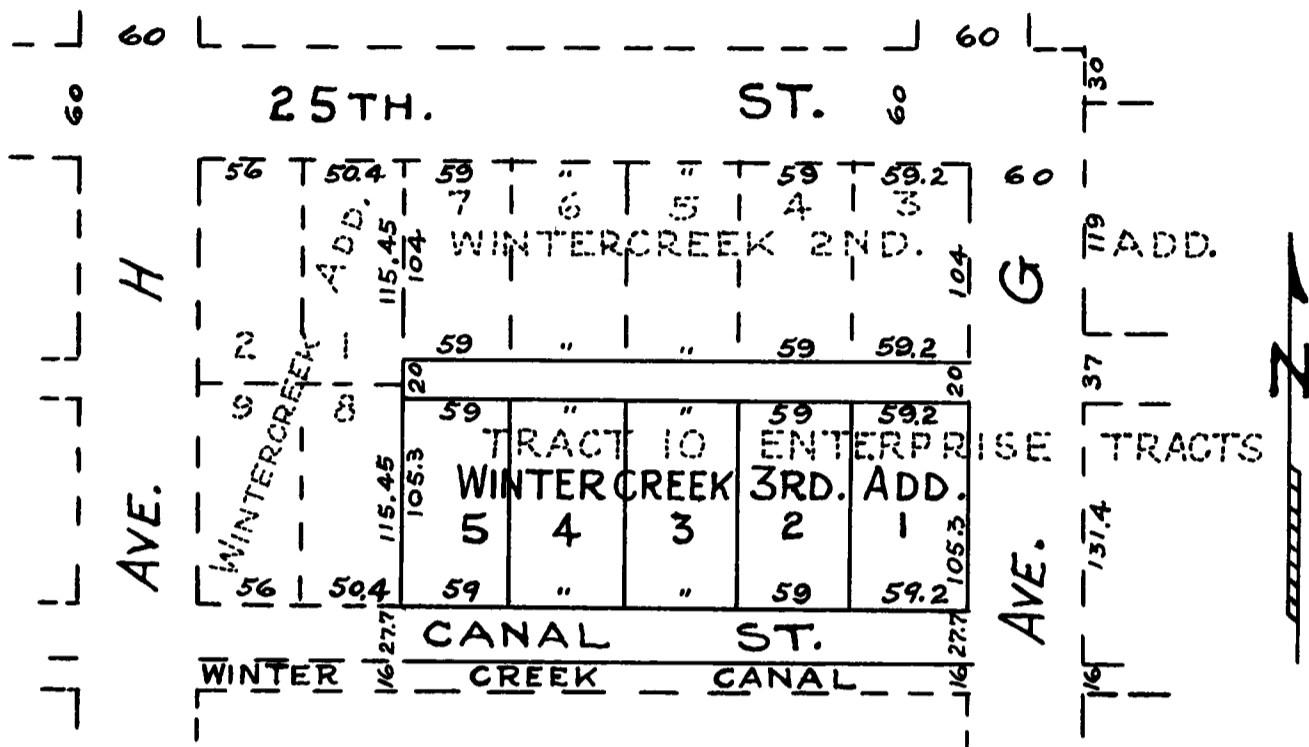
to

The Public

State of Nebraska, Scotts Bluff County, ss.
Entered on Numerical Index and filed for
record the 24 day of March 1950 at 2:30 o'clock
P.M. and recorded in Book 64 of Deeds on Page

231
Alma L. Truax, Register of Deeds

.....



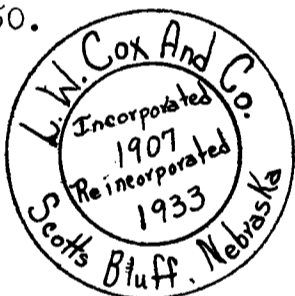
DEDICATION

The undersigned, L. W. Cox and Co., a Corporation, being the owner of part of Tract Ten (10), Enterprise Tracts Addition to the City of Scottsbluff, Scotts Bluff County, Nebraska, have caused said land to be surveyed and platted as Winter Creek Third Addition to the City of Scottsbluff, Scotts Bluff County, Nebraska, as shown by the plat and the Surveyor's Certificate hereon. We hereby dedicate the Streets, Avenues, and Alleys to Public Use.

Dated this 1st day of March, 1950.

L. W. COX AND CO.
A Corporation,

By H. J. Schwab
Its President

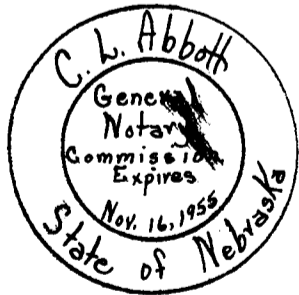


STATE OF NEBRASKA) ss:
SCOTTS BLUFF COUNTY)

Now, on this 1st day of March, 1950, before me, a Notary Public duly commissioned, qualified and acting in and for said state and county, personally came H. J. Schwab, President of L. W. Cox and Co., a corporation, to me personally known to be the president and the identical person whose name is affixed to the above Dedication, and acknowledged the execution thereof to be his voluntary act and deed as such officer and the voluntary act and deed of L. W. Cox and Co., a corporation, and that the Corporate Seal of L. W. Cox and Co., a corporation, was thereto affixed by its authority.

C. L. Abbott
Notary Public

My Commission Expires: November 16, 1955



ENGINEER'S CERTIFICATE

STATE OF NEBRASKA) ss:
SCOTTS BLUFF COUNTY)

I, E. Y. Grupe, a competent surveyor of Scotts Bluff County, Nebraska, hereby certify that I have accurately surveyed Winter Creek Third Addition, situated on part of Tract Ten (10), Enterprise Tracts Addition to the City of Scottsbluff, Scotts Bluff County, Nebraska; that the above plat is a correct delineation of said survey, drawn to a scale of 100 feet to an inch. Iron Pins are driven into the ground at the front and rear corners of each Lot. Each Lot bears its own number.

WITNESS MY HAND this 1st day of March, 1950.

E. Y. Grupe
Engineer - Reg. No. E-10

Approved and accepted by the City of Scottsbluff, Nebraska, this 6th day of March, 1950.

All lots to be R1
Approved by Zoning Board this 6th day of March, 1950.

W. C. Boston
Chairman of Board

V. R. Blackledge Mayor
C. M. Cushing City Clerk

