

Note: See Avenue B Extension, Book 57, Pg. 460

DEED RECORD NO. 57

SCOTTS BLUFF COUNTY, NEBRASKA

The Sisters of St. Francis,
A Colorado Corporation

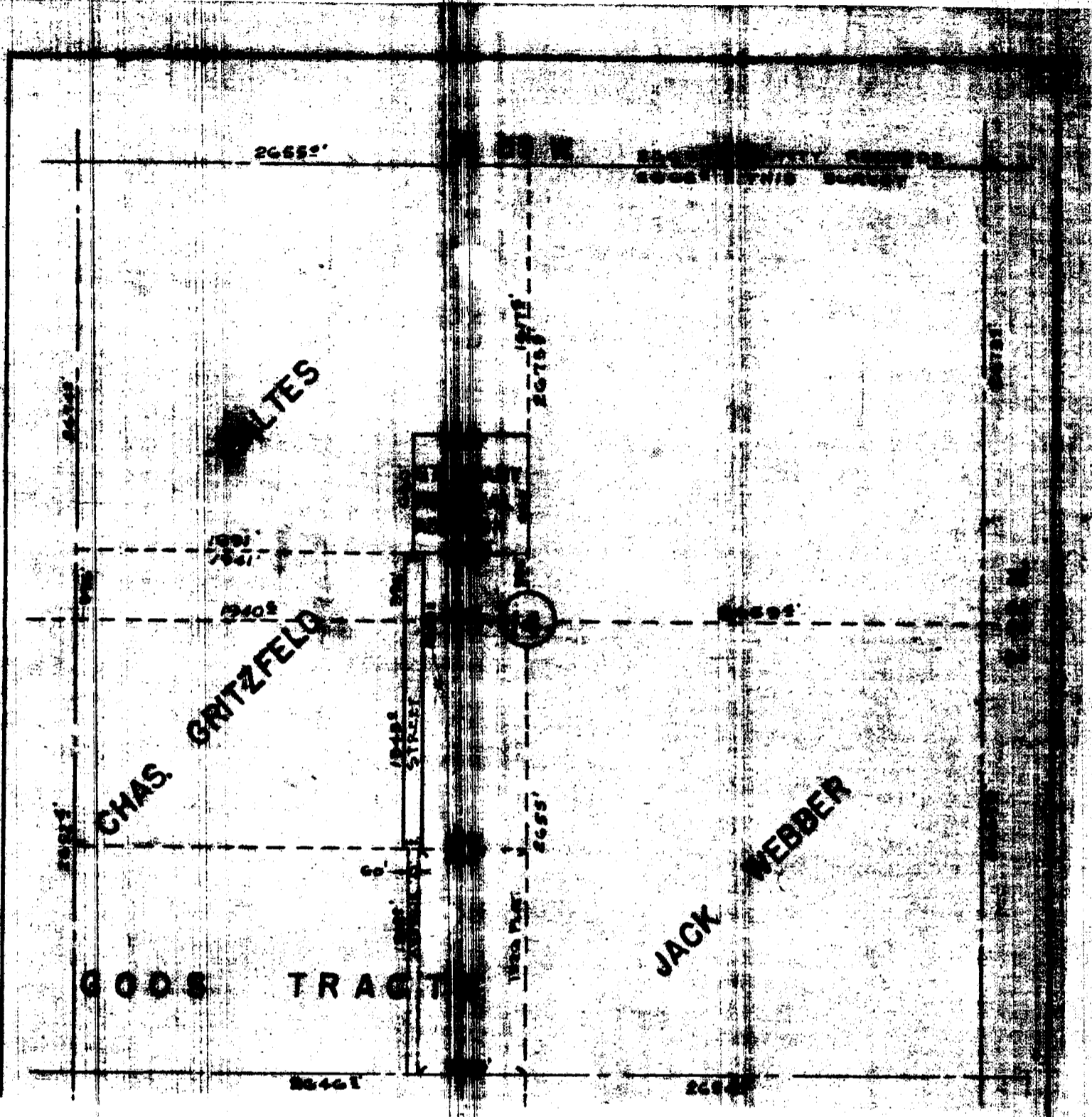
State of Nebraska, Scotts Bluff County, ss.
Entered on Numerical Index and filed for
record the 23 day of April 1947 at 1:15
o'clock P.M. and recorded in Book 57 of
Deeds on Page 180.

to

The Public

Alma L. Truax, Register of Deeds.

Note: See St Mary Hospital Add, Ave D, 36th St, etc, Book 119, Page 20



SURVEYOR'S CERTIFICATE

.....

STATE OF NEBRASKA)
) SS
SCOTTS BLUFF COUNTY)

I, E. Y. Grupe, a competent surveyor of Scotts Bluff County, Nebraska, hereby certify that the St. Mary Hospital Addition to the City of Scottsbluff, Nebraska, a subdivision of part of the NW $\frac{1}{4}$ of Section 14, Township 22N, Range 55 West of the 6th P.M., has been accurately surveyed under my direct supervision; that the above and foregoing is a true and correct survey thereof; and that the lots, blocks, streets, avenues, alleys and grounds are well and accurately staked off and marked and correctly designated and shown on the foregoing survey.

Dated this 10th day of Mar., 1947

E. Y. Grupe
E. Y. Grupe, Engineer, Lic. No. 10

ANNEXATION AND DEDICATION

.....

The Sisters of St. Francis, a Colorado Corporation, hereby certify that it is the owner in fee of the subdivision of that part of the NW $\frac{1}{4}$ of Section 14, Township 22 North, Range 55 West of the 6th P.M. upon which is located The St. Mary Hospital Addition to the City of Scottsbluff,