

Note: See Garcia's Sub-Div. Tract 19 75-517
See Crist Sub-Div. Tr. 2 & E 1/2 Tr. 3 146-186
See Amended Crist Sub-Div. Tr. 2 & E 1/2 Tr. 3 148-671
See Amended Plat of R. S. Hunts Tract , Book 156, Page 410

R. S. Hunt

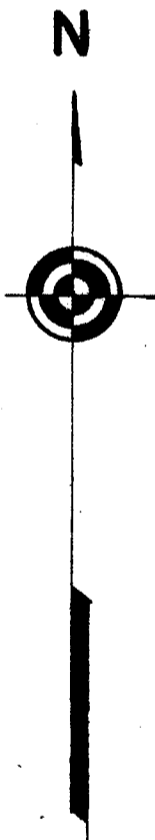
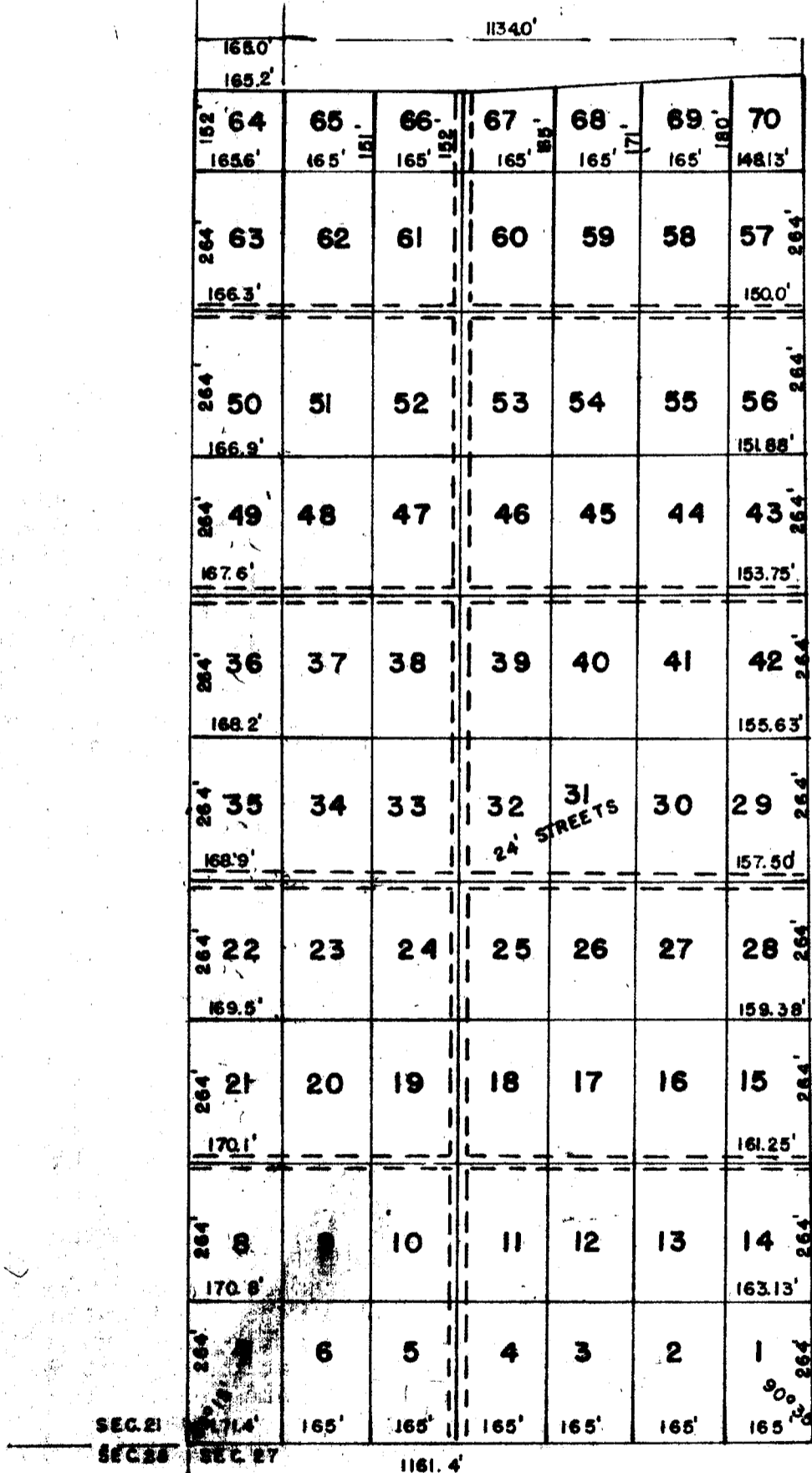
to

Whom Concerned

State of Nebraska, Scotts Bluff County, ss.
Entered on Numerical Index and filed for
record the 6th day of August 1945 at 3:45
o'clock P.M. and recorded in Book 48 of
Deeds on Page 649.
Alma L. Truax, Register of Deeds.

R. S. HUNT'S TRACT

LOCATED IN WEST 1/2, SW 1/4,
SEC. 22, T. 22N, R. 55 W. OF 6TH P.M.



STATE OF NEBRASKA SS
SCOTTS BLUFF COUNTY

I, hereby certify that, the above plat is a true copy, enlarged, from a plat of Section 22, Township 22 North, Range 55 West of the 6th P.M. as recorded in the County Surveyor's office at Gering, Nebraska. This plat is drawn to a scale of one inch equals 300 feet. Lot numbers have been added and each lot shall be known by its number.

Otho S. Cooper
Otho S. Cooper,
County Surveyor.