

Entered in Numerical Index and Filed for Record in the Register of Deeds Office of said County of Scotts Bluff, State of Nebraska, this 9 day of September A. D., 1997, at 12:22 o'clock P. M., Recorded in Book 214 of Deeds Page 34 thereof. Fee \$11.50

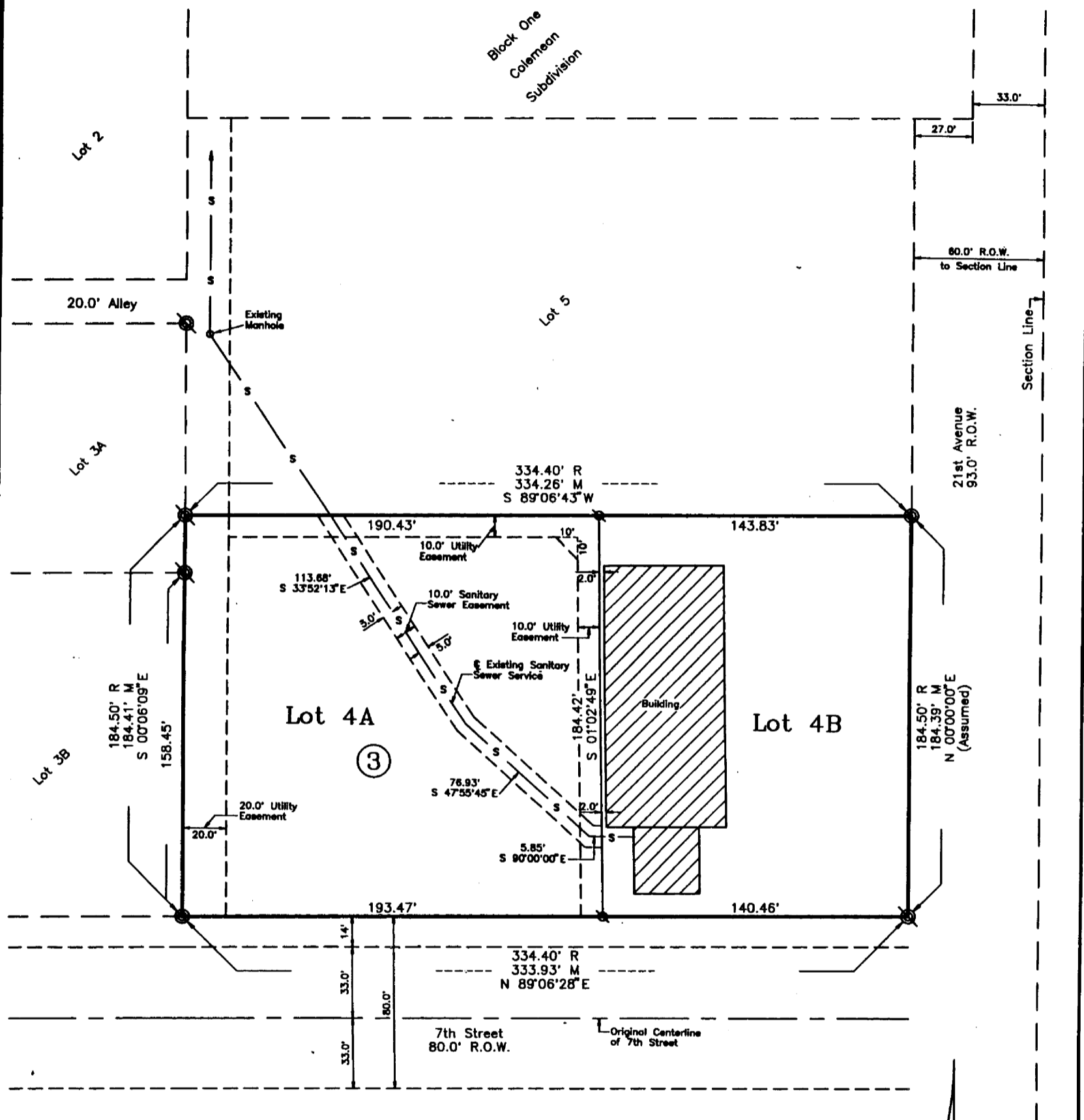
Mary J. Kelle Register of Deeds

5940

LOTS 4A and 4B, BLOCK 3, A REPLAT OF LOT 4, BLOCK 3, WEBER SUBDIVISION

N.I.M. B  
C.I.N. LS  
P.I.C.T. \_\_\_\_\_  
C.O.M.P.A.R.E.D. \_\_\_\_\_

An Addition to the City of Scottsbluff, Scotts Bluff County, Nebraska.



SURVEYOR'S CERTIFICATE

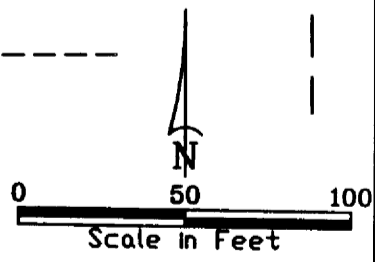
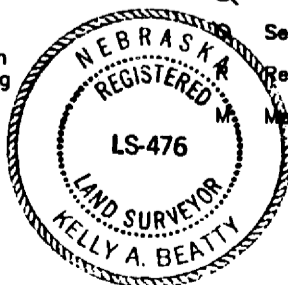
I, Kelly A. Beatty, a Nebraska Registered Land Surveyor, hereby certify that I have surveyed and prepared a plat of LOTS 4A and 4B, BLOCK 3, A REPLAT OF LOT 4, BLOCK 3, WEBER SUBDIVISION, an Addition to the City of Scottsbluff, Scotts Bluff County, Nebraska.

That the accompanying plat is a true delineation of such survey drawn to a scale of 50 feet to the inch. That all dimensions are in feet and decimals, that each lot and block has its own number. That the boundary of the plat is shown with a heavy solid line with dashed lines being for orientation purposes only. That all corners found or set are marked as shown.

WITNESS MY HAND AND SEAL this 23<sup>rd</sup> day of July, 1997. FOR THE FIRM OF M. C. SCHAFF AND ASSOCIATES, INC.

*Kelly A. Beatty*

Kelly A. Beatty, Nebraska Registered Land Surveyor, L. S. 476



Existing Corner  
Set 5/8" x 30" Rebar  
Record Distance  
Measured Distance

5940

LOTS 4A and 4B, BLOCK 3  
WEBER SUBDIVISION  
SCOTTSBLUFF, NEBRASKA  
SHEET 2 OF 2

OWNER'S STATEMENT

We, the undersigned, being the owners of Lot 4, Block 3, Weber Subdivision, an Addition to the City of Scottsbluff, Scotts Bluff County, Nebraska, as described in the foregoing "Surveyor's Certificate" and shown on the accompanying plat have caused such real estate to be platted as LOTS 4A and 4B, BLOCK 3, A REPLAT OF LOT 4, BLOCK 3, WEBER SUBDIVISION, an Addition to the City of Scottsbluff, Scotts Bluff County, Nebraska.

That the foregoing plat is made with the free consent and in accordance with the desires of the undersigned owners. We hereby dedicate the utility easements shown on the plat to the use and benefit of the public.

Dated this 1st day of 1997, 19 97.

~~Rexus Ag Service, Inc.~~

William V. Rexus  
~~William V. Rexus, President~~

William V. Rexus  
William V. Rexus

Charlotte J. Rexus  
Charlotte J. Rexus

ACKNOWLEDGEMENT

STATE OF NEBRASKA )  
COUNTY OF SCOTTS BLUFF )

and Charlotte J. Rexus, Husband and Wife, hd

Before me, a Notary Public, qualified and acting in said County, personally came William V. Rexus, ~~President, Rexus Ag Service, Inc.~~, to me known to be the identical person whose signatures are affixed to the foregoing "Owner's Statement" and acknowledged the execution thereof to be their voluntary act and deed ~~and the voluntary act and deed of Rexus Ag Service, Inc.~~

WITNESS MY HAND AND NOTARIAL SEAL this 1st day of August 1997.



Loni M. Deines  
Notary Public

My Commision Expires: \_\_\_\_\_

APPROVAL AND ACCEPTANCE

STATE OF NEBRASKA )  
COUNTY OF SCOTTS BLUFF )

The foregoing plat of LOTS 4A and 4B, BLOCK 3, A REPLAT OF LOT 4, BLOCK 3, WEBER SUBDIVISION, an Addition to the City of Scottsbluff, Scotts Bluff County, Nebraska, is hereby approved by the Mayor and City Council of the City of Scottsbluff, Scotts Bluff County, Nebraska, by resolution passed this 25th day of August, 1997.

Mark Weiss  
Mayor

