

2 mo

TRAVIS SUBDIVISION

649

BLOCK 2

4332

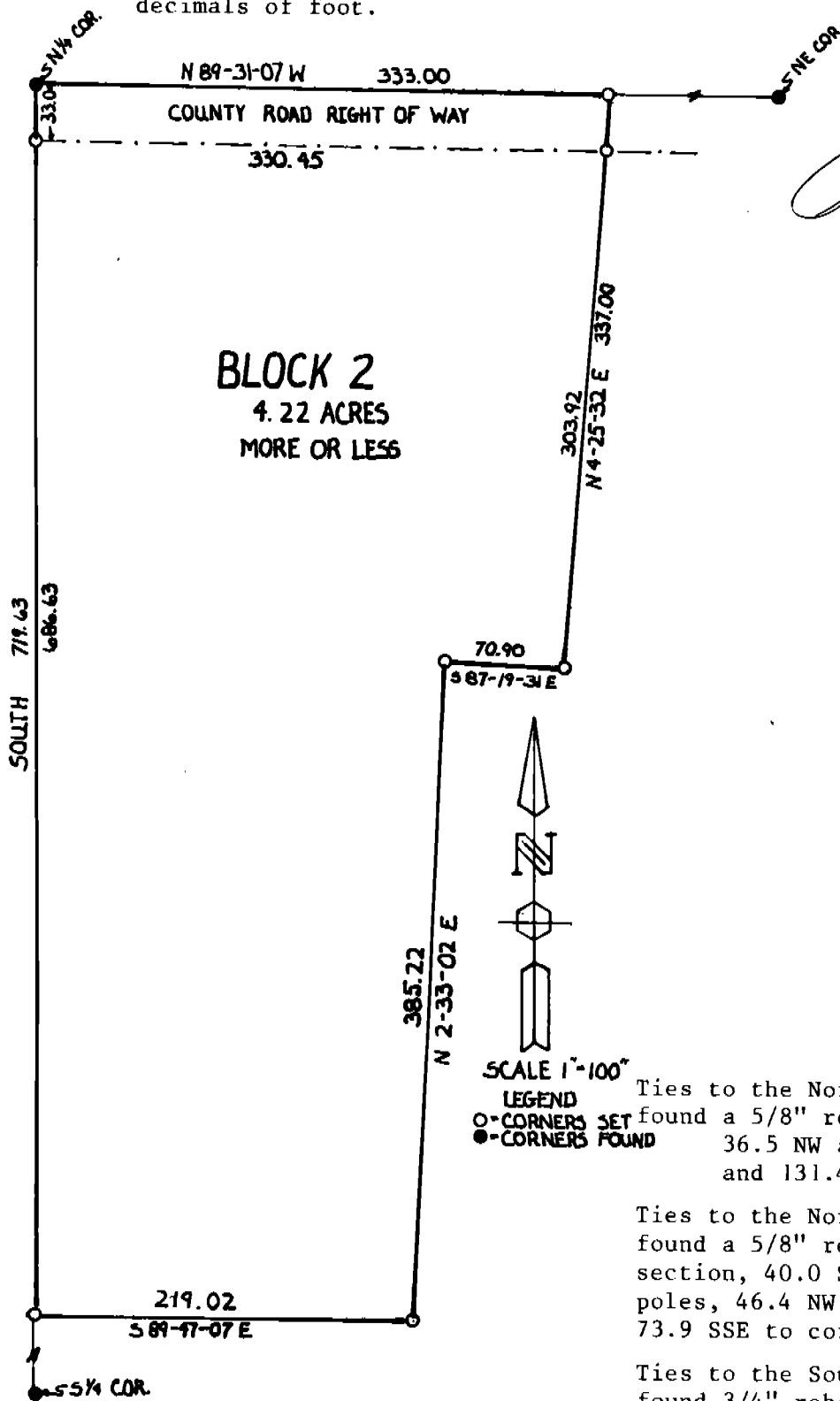
A SUBDIVISION IN THE NORTHEAST QUARTER OF SECTION 22,
TOWNSHIP 23 NORTH, RANGE 57 WEST OF THE 6TH PRINCIPAL
MERIDIAN, SCOTTS BLUFF COUNTY, NEBRASKA

SURVEYOR'S CERTIFICATE

I, Robert J. Zumbahlen, do hereby certify that I have surveyed a tract of land situated in the Northeast Quarter of Section 22, Township 23 North, Range 57 West, of the 6th Principal Meridian, Scotts Bluff County, Nebraska, and that such tract of land shall be recorded and known as BLOCK 2, TRAVIS SUBDIVISION, the boundary of which is more particularly described as follows:

Beginning at the north quarter corner of said Section 22; thence South on the west line of said Northeast Quarter, a distance of 719.63 feet; thence South 89°47'07" East, a distance of 219.02 feet; thence North 2°33'02" East, a distance of 385.22 feet; thence South 87°19'31" East, a distance of 70.90 feet; thence North 4°25'32" East, a distance of 337.00 feet to a point on the north line of said Northeast Quarter, 333.00 feet east of the north quarter corner of said Section 22; thence North 89°31'07" West on said north line, a distance of 333.00 feet to the Point of Beginning and containing an area of 4.47 acres, more or less, of which 0.25 acre, more or less, is county road right of way.

That the accompanying plat is a true delineation of such survey and subdivision, drawn to the scale 100 feet to the inch and that all dimensions are in feet and decimals of foot.



WITNESS MY HAND AND SEAL
this 28th day of July, 1995.

Robert J. Zumbahlen
Robert J. Zumbahlen
Nebraska LS-331



SCALE 1"=100'

LEGEND
○ - CORNERS SET
● - CORNERS FOUND

Ties to the North Quarter Corner of Sec. 22, found a 5/8" rebar in county road, 32.0 SW, 36.5 NW and 108.3 ENE to power poles, and 131.4 ESE to a gate post

Ties to the Northeast Corner of Sec. 22, found a 5/8" rebar in county road intersection, 40.0 SW and 81.2 ESE to power poles, 46.4 NW to a guy pole, 51.3 NE and 73.9 SSE to corner post.

Ties to the South Quarter Corner of Sec. 22, found 3/4" rebar 0.15 SW of a corner post, 17.1 E and 15.0 N to fence post and 46.0 S to a RR tie post.

