

17

# FINAL PLAT

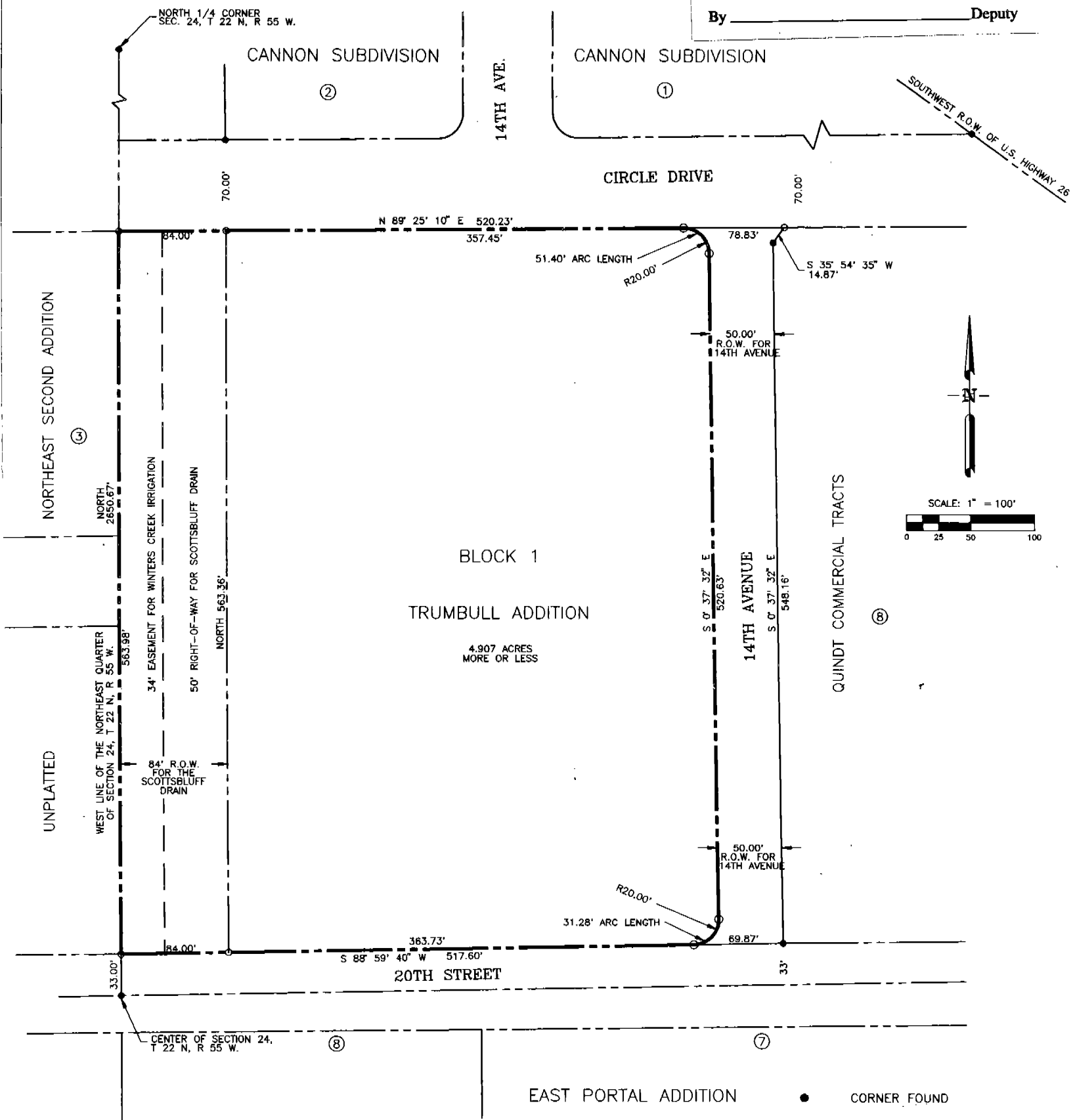
## BLOCK 1, TRUMBULL ADDITION 5332

### TO THE CITY OF SCOTTSBLUFF, SCOTTS BLUFF COUNTY, NEBRASKA

NUM. B  
 GEN. 93  
 PICT. \_\_\_\_\_  
 COMPARED \_\_\_\_\_

State of Nebraska, Scotts Bluff County ss.  
 Entered in Numerical Index and filed for  
 record the 19 day of September 1994  
 at 11:58 o'clock A.M., and recorded in  
 Book 205 of Deeds  
 on page 24  
Mary J. Jellie  
 Register of Deeds

By \_\_\_\_\_ Deputy



prepared by  
 Baker & Associates  
 120 East 16th Street Suite A  
 Scottsbluff, Nebraska

OWNER:  
 CARR-TRUMBULL LUMBER CO. INC.  
 P.O. BOX 139  
 SCOTTSBLUFF, NEBRASKA 69363

5332

SURVEYOR'S CERTIFICATE

I, Robert J. Zumbahlen, do hereby certify that I have surveyed a tract of land in the Northeast Quarter of Section 24, Township 22 North, Range 55 West of the 6th Principal Meridian, Scotts Bluff County, Nebraska, described as follows:

Beginning at a point on the west line of said Northeast Quarter, 33.00 feet north of the Center of said Section; thence North on the west line of said Northeast Quarter, for 563.98 feet to a point on the south line of Circle Drive in the City of Scottsbluff; thence North 89° 25' 10" East on the south line of said Circle Drive, for 520.28 feet to the northwest corner of Tract 8, Quindt Commercial Tracts in the City of Scottsbluff; thence South 35° 54' 35" West on the west line of said Tract 8, for 14.87 feet; thence South 0° 37' 32" East on the west line of said Tract 8, for 548.16 feet to the southwest corner of said Tract 8 and on the north line of 20th Street in the City of Scottsbluff; thence South 88° 59' 40" West on the north line of said 20th Street, for 517.60 feet to the Point of Beginning and containing an area of 6.40 acres, more or less.

That the accompanying plat represents a correct delineation of said survey drawn to the scale of 100 feet to the inch; that all dimensions are in feet and decimals of a foot; that the bearings are assumed; and that all corners set were 5/8" x 24" Rebars.



WITNESS MY HAND AND SEAL  
this 8th day of May, 1994

*Robert J. Zumbahlen*  
Robert J. Zumbahlen  
Nebraska LS-331



DEDICATION

The City of Scottsbluff does hereby dedicate the 50' Right-of-Way of the Scottsbluff Drain as shown on and referred to in the plat to the use and benefit of the public.

By: Donald E. Overman  
Donald E. Overman, Mayor

Attested: Fergus B. Johnson  
City Clerk



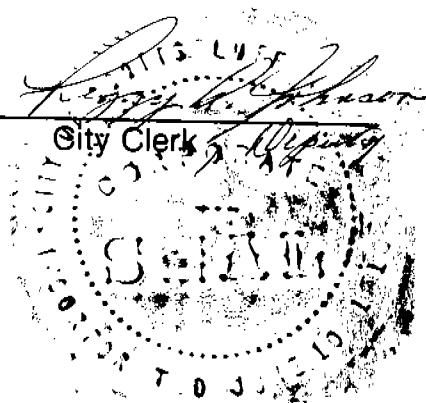
Seal

APPROVAL

The foregoing plat of Block 1 Trumbull Addition to the City of Scottsbluff, Scotts Bluff County, Nebraska, was approved by the Mayor and City Council of the City of Scottsbluff, Nebraska, by Resolution duly passed this 9 day of May, 1994.

By: Donald E. Overman  
Donald E. Overman, Mayor

Attested: Fergus B. Johnson  
City Clerk



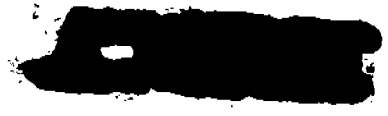
Seal

ACKNOWLEDGEMENT

State of Nebraska )  
Scotts Bluff County ) ss.

Before me, a Notary Public, Qualified and acting in said County, personally came Donald E. Overman, Mayor of the City of Scottsbluff, Nebraska, known to me to be the identical person who signed the foregoing "Dedication" and "Approval" and acknowledged the execution thereof to be their voluntary act and deed.

WITNESS MY HAND AND SEAL this 9 day of May, 1994.



Fergus B. Johnson  
Notary Public

My Commission Expires:

