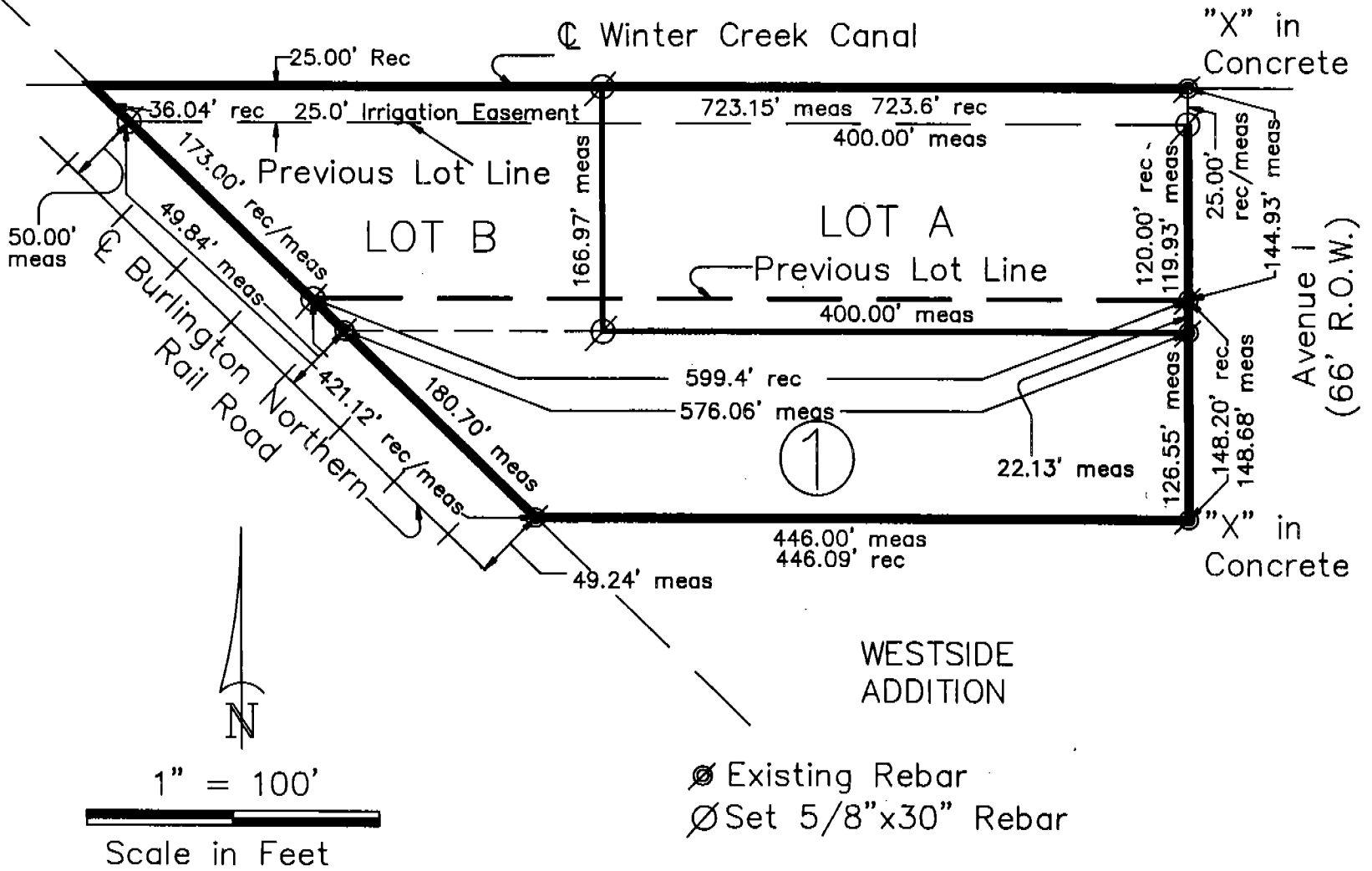


1552
1552

Lots A and B, Block 1, A Replat of Lots 1, 1A, and 2, Block 1, Sumner Addition to the City of Scottsbluff, Nebraska



SURVEYOR'S CERTIFICATE

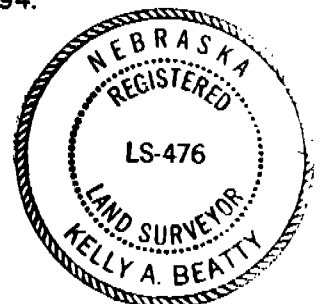
I, Kelly A. Beatty, a Nebraska Registered Land Surveyor, hereby certify that I have surveyed and prepared a plat of LOTS A AND B, BLOCK 1, A Replat of Lots 1, 1A, and 2, Block 1, Sumner Addition to the City of Scottsbluff, Scotts Bluff County, Nebraska.

That the accompanying plat is a true delineation of said survey and plat drawn to a scale of 100 feet to the inch. That all dimensions are in feet and decimals and that each lot and block bears its own name designation. That the boundary of the plat is shown with a heavy solid line.

WITNESS MY HAND AND SEAL this 18th day of March, 1994.
FOR THE FIRM OF M. C. SCHAFF AND ASSOCIATES, INC.

Kelly A. Beatty

Kelly A. Beatty, Nebraska Registered Land Surveyor, L. S. 476



State of Nebraska, Scotts Bluff County ss.
Entered in Numerical Index and filed for
record the 25 day of March, 1994
at 9:35 o'clock A M., and recorded in
Book 203 of Deeds
on page 356
Mary Jo Lollar
Register of Deeds

COMPARED
PLOT
GEN
MIN

By _____ Deputy