

2015-4057

COMPUTER CP C  
PICTURED CP  
IMAGED \_\_\_\_\_

RECORDED  
SCOTTS BLUFF COUNTY, NE

Date 8-7-15 Time 10:40 am

INST. 2015 4057

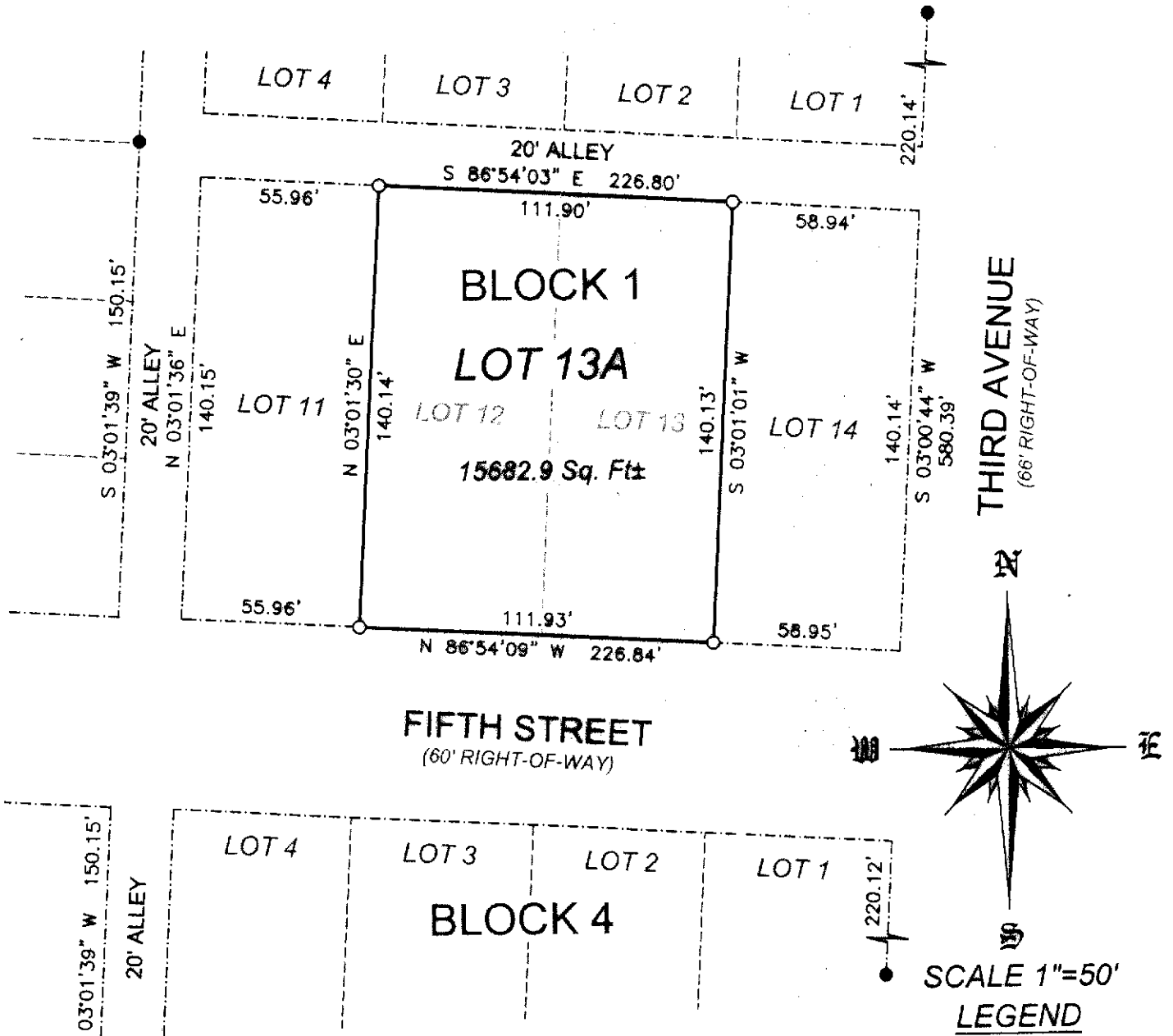
*Jean A. Bauer*

REGISTER OF DEEDS

NUM PAGES 2  
DOC TAX \_\_\_\_\_ PD \_\_\_\_\_ CHG \_\_\_\_\_ RET \_\_\_\_\_  
FEES 16.00 PD \_\_\_\_\_ CHG \_\_\_\_\_ RET \_\_\_\_\_  
TOTAL 16.00 C.C.  
REC'D City of Minatare  
RET For office use

# FINAL PLAT

LOT 13A, A REPLAT OF LOTS 12 & 13, BLOCK 1, THIRD ADDITION TO EAST MINATARE, SCOTTS BLUFF COUNTY, NEBRASKA.



**SURVEYOR'S CERTIFICATE:**

I, SCOTT M. BOSSE, NEBRASKA REGISTERED LAND SURVEYOR NUMBER 603, DO HEREBY CERTIFY THAT I HAVE SURVEYED AND PLATTED THE FOREGOING PLAT OF LOT 13A, A REPLAT OF LOTS 12 AND 13, BLOCK 1, THIRD ADDITION TO EAST MINATARE, SCOTTS BLUFF COUNTY, NEBRASKA AS SHOWN ON THE ACCOMPANYING DRAWING; THAT THE ACCOMPANYING DRAWING IS A CORRECT DELINEATION OF SAID SURVEY DRAWN TO A SCALE OF 30 FEET TO THE INCH; THAT SAID SURVEY AND DRAWING WAS CONDUCTED BY ME OR UNDER MY DIRECT SUPERVISION; THAT THE DISTANCES ARE GROUND DISTANCES GIVEN IN FEET AND DECIMALS OF A FOOT; AND THE MONUMENTS WERE FOUND OR SET AS INDICATED AND THE BOUNDARY IS DEPICTED BY A THICKENED SOLID LINE.

WITNESS MY HAND AND SEAL this 27<sup>th</sup> day of JULY, 2015.

*[Signature]*  
Scott M. Bosse  
NEBRASKA REGISTERED LAND SURVEYOR NUMBER 603



<b>SHEET</b> 1 OF 2	PROJECT: LOT 13A, BLOCK 1, THIRD ADD. MINATARE, NEBRASKA	<b>ACCUSTAR SURVEYING</b> 30801 COUNTY ROAD 17 PHONE: (308) 623-0197	MITCHELL, NE 69357 CELL: (308) 631-0737	Scale 1"=50' Date: JULY 23, 2015 Dwn By: SMD REVISED:

# FINAL PLAT

LOT 13A, A REPLAT OF LOTS 12 & 13, BLOCK 1, THIRD ADDITION TO EAST MINATARE, SCOTTS BLUFF COUNTY, NEBRASKA.

### OWNERS STATEMENT

I, THE UNDERSIGNED, BEING THE OWNER OF LOTS 12 AND 13, BLOCK 1, THIRD ADDITION TO EAST MINATARE, SCOTTS BLUFF COUNTY, NEBRASKA, AS SHOWN ON THE ACCOMPANYING PLAT HAVE CAUSED SUCH REAL ESTATE TO BE PLATTED AS LOT 13A, A REPLAT OF LOTS 12 AND 13, BLOCK 1, THIRD ADDITION TO EAST MINATARE, SCOTTS BLUFF COUNTY, NEBRASKA.

DATED THIS 07 DAY OF 27, 2015.

  
SANDRA REYES

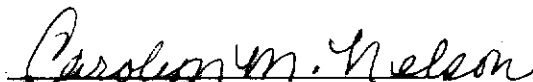
### ACKNOWLEDGMENT

STATE OF NEBRASKA )  
COUNTY OF SCOTTS BLUFF )

BEFORE ME, A NOTARY PUBLIC, QUALIFIED AND ACTING IN SAID COUNTY, PERSONALLY CAME SANDRA REYES, TO ME KNOWN TO BE THE IDENTICAL PERSON WHOSE SIGNATURE IS AFFIXED TO THE FOREGOING "OWNER'S STATEMENT" AND ACKNOWLEDGED THE EXECUTION THEREOF TO BE THEIR VOLUNTARY ACT AND DEED.

WITNESS MY NOTORIAL SEAL THIS 27 DAY OF July, 2015.



  
NOTARY PUBLIC


MY COMMISSION EXPIRES: 6-27-18

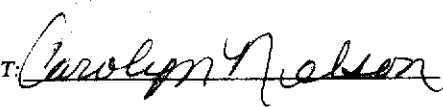


### APPROVAL

THE FOREGOING PLAT OF LOT 13A, A REPLAT OF LOTS 12 AND 13, BLOCK 1, THIRD ADDITION TO EAST MINATARE, SCOTTS BLUFF COUNTY, NEBRASKA, IS HEREBY APPROVED AND ACCEPTED BY THE CHAIRMAN AND VILLAGE BOARD OF MINATARE, SCOTTS BLUFF COUNTY, NEBRASKA, BY RESOLUTION DULY PASSED

THIS 20th DAY OF July, 2015.

  
JERRY HARMS, MAYOR

ATTEST: 

SHEET  
2 OF 2

PROJECT:  
LOT 13A, BLOCK 1, THIRD ADD.  
SANDRA REYES  
MINATARE, NEBRASKA

### ACCUSTAR SURVEYING

30801 COUNTY ROAD 17 MITCHELL, NE 69357  
PHONE: (308) 623-0197 CELL: (308) 631-0737

Scale 1"=50'  
Date JULY 22, 2015  
Dwn By SMH  
REVISED: