

2012-1982

Inst. 2012 1982

NUM INDEX W C
COMPUTER J M
PICTURED h
IMAGED _____

NUM PAGES 3
DOC TAX _____ PD _____ CHG _____ RET _____
FEES 22.00 PD CHG _____ RET _____
TOTAL 22.00 CK
REC'D J. L. Jering
RET _____

RECORDED
SCOTTS BLUFF COUNTY, NE

Date 4-11-12 Time 9:25am

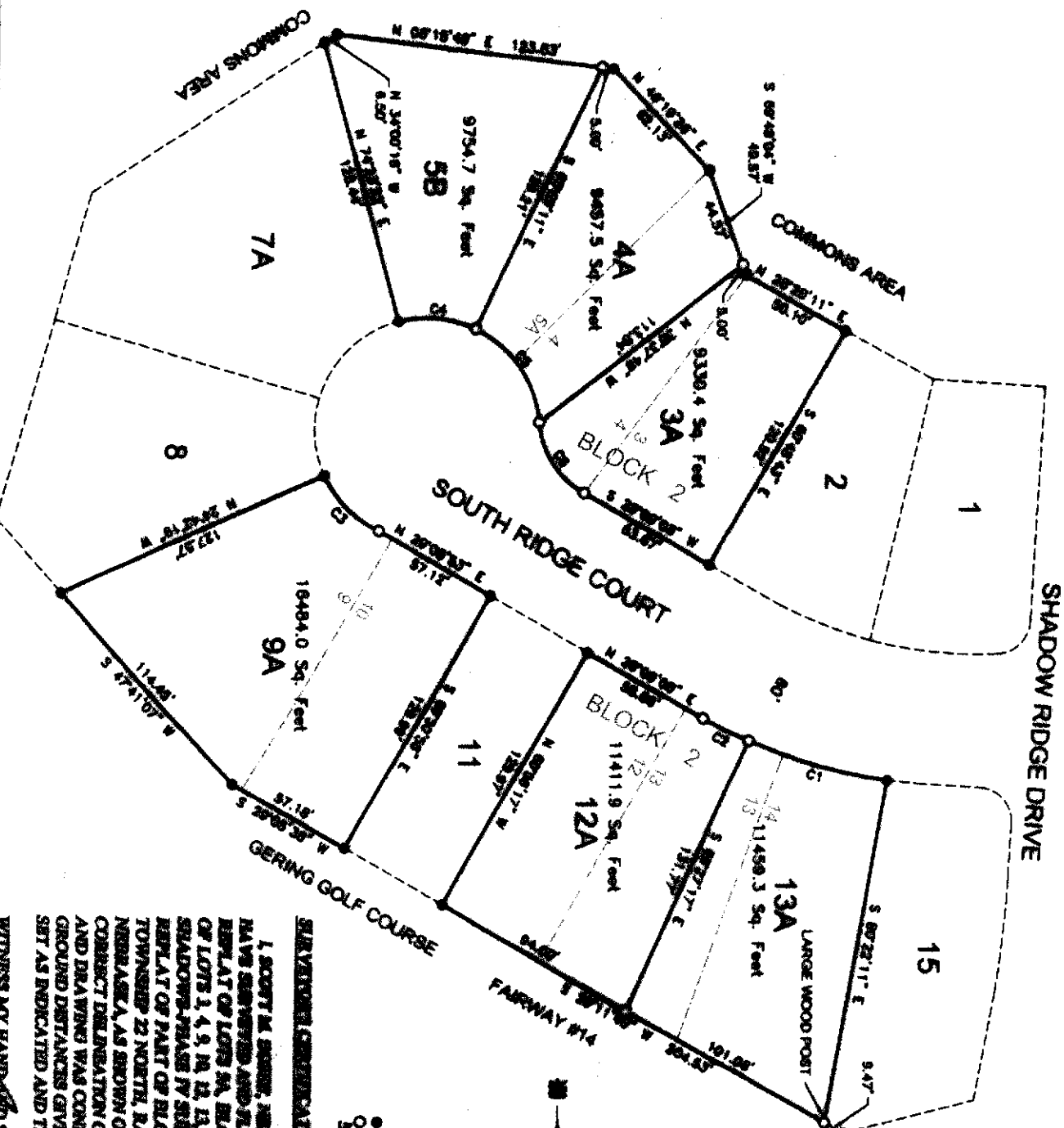
Jean A. Bauer

REGISTER OF DEEDS

SA
ger

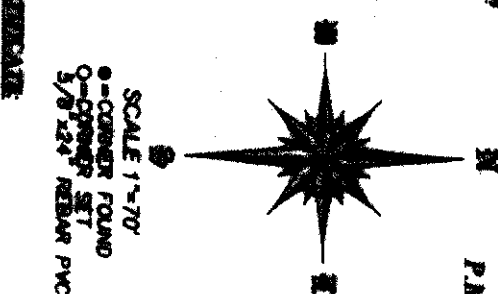
THIS PAGE INCLUDED FOR INDEXING PURPOSES

CURVE	RADIUS	ARC LENGTH	CHORD LENGTH	CHORD BEARING	DELTA ANGLE
C1	220.00'	64.00'	61.00'	S 89°48'00" W	138.00°
C2	220.00'	22.00'	22.00'	S 89°48'00" W	138.00°
C3	220.00'	22.00'	22.00'	N 89°48'00" E	138.00°
C4	220.00'	22.00'	22.00'	N 89°48'00" E	138.00°
C5	220.00'	22.00'	22.00'	S 89°48'00" W	138.00°
C6	220.00'	22.00'	22.00'	S 89°48'00" W	138.00°
C7	220.00'	22.00'	22.00'	N 89°48'00" E	138.00°
C8	220.00'	22.00'	22.00'	N 89°48'00" E	138.00°



FINAL PLAT

LOTS 5B, 3A, 4A, 9A, 12A, AND 13A, BLOCK 2, A REPLAT OF LOTS 5A, BLOCK 2, A REPLAT OF LOTS 5, 6, AND 7, BLOCK 2, THE PRESERVE AND A REPLAT OF LOTS 3, 4, 9, 10, 12, 13, AND 14, BLOCK 2, THE PRESERVE, ALL A REPLAT OF TRACT 4, MONUMENTS SHADOWS-PHASE IV SUBDIVISION TO THE CITY OF GERING, SCOTTS BLUFF COUNTY, NEBRASKA, A REPLAT OF PART OF BLOCK A, NELSON SUBDIVISION, SITUATED IN THE EAST HALF OF SECTION 34, TOWNSHIP 22 NORTH, RANGE 55 WEST OF THE 6TH P.M., CITY OF GERING, SCOTTS BLUFF COUNTY, NEBRASKA.



SURVEYOR'S CERTIFICATE:

I, SCOTT M. SIMEK, NEBRASKA REGISTERED LAND SURVEYOR NUMBER 089, DO HEREBY CERTIFY THAT I HAVE SURVEYED AND PLATTED THE FOREGOING PLAT OF LOTS 5B, 3A, 4A, 9A, 12A, AND 13A, BLOCK 2, A REPLAT OF LOTS 5A, BLOCK 2, A REPLAT OF LOTS 5, 6, AND 7, BLOCK 2, THE PRESERVE AND A REPLAT OF LOTS 3, 4, 9, 10, 12, 13, AND 14, BLOCK 2, THE PRESERVE, ALL A REPLAT OF TRACT 4, MONUMENTS SHADOWS-PHASE IV SUBDIVISION TO THE CITY OF GERING, SCOTTS BLUFF COUNTY, NEBRASKA, A REPLAT OF PART OF BLOCK A, NELSON SUBDIVISION, SITUATED IN THE EAST HALF OF SECTION 34, TOWNSHIP 22 NORTH, RANGE 55 WEST OF THE 6TH P.M., CITY OF GERING, SCOTTS BLUFF COUNTY, NEBRASKA, AS SHOWN ON THE ACCOMPANYING DRAWING. THAT THE ACCOMPANYING DRAWING IS A CORRECT DELINEATION OF SAID SURVEY DRAWN TO A SCALE OF 70 FEET TO THE INCH. THAT SAID SURVEY AND DRAWING WAS CONDUCTED BY ME OR UNDER MY DIRECT SUPERVISION. THAT THE DISTANCES ARE GROUND DISTANCES GIVEN IN FEET AND DECIMALS OF A FOOT, AND THE MONUMENTS WERE FOUND OR SET AS INDICATED AND THE BOUNDARY IS DEPICTED BY A THICKERED SHADLINE.

WITNESS MY HAND AND SEAL this 31st day of March, 2012.

Scott M. Simek
 NEBRASKA REGISTERED LAND SURVEYOR NUMBER 089

FINAL PLAT

LOTS 5B, 3A, 4A, 9A, 12A, AND 13A, BLOCK 2, A REPLAT OF LOTS 5A, BLOCK 2, A REPLAT OF LOTS 5, 6, AND 7, BLOCK 2, THE PRESERVE AND A REPLAT OF LOTS 3, 4, 9, 10, 12, 13, AND 14, BLOCK 2, THE PRESERVE, ALL A REPLAT OF TRACT 4, MONUMENTS SHADOWS-PHASE IV SUBDIVISION TO THE CITY OF GERING, SCOTTS BLUFF COUNTY, NEBRASKA, A REPLAT OF PART OF BLOCK A, NELSON SUBDIVISION, SITUATED IN THE EAST HALF OF SECTION 34, TOWNSHIP 22 NORTH, RANGE 55 WEST OF THE 6TH P.M., CITY OF GERING, SCOTTS BLUFF COUNTY, NEBRASKA.

OWNERS STATEMENT

WE, THE UNDERSIGNED, BEING THE OWNERS OF LOTS 5A, BLOCK 2, A REPLAT OF LOTS 5, 6, AND 7, BLOCK 2, THE PRESERVE AND LOTS 3, 4, 9, 10, 12, 13, AND 14, BLOCK 2, THE PRESERVE, ALL A REPLAT OF TRACT 4, MONUMENTS SHADOWS-PHASE IV SUBDIVISION TO THE CITY OF GERING, SCOTTS BLUFF COUNTY, NEBRASKA, A REPLAT OF PART OF BLOCK A, NELSON SUBDIVISION, SITUATED IN THE EAST HALF OF SECTION 34, TOWNSHIP 22 NORTH, RANGE 55 WEST OF THE 6TH P.M., CITY OF GERING, SCOTTS BLUFF COUNTY, NEBRASKA, AS SHOWN ON THE ACCOMPANYING PLAT HAVE CAUSED SUCH REAL ESTATE TO BE PLATTED AS LOTS 5B, 3A, 4A, 9A, 12A, AND 13A, BLOCK 2, A REPLAT OF LOTS 5A, BLOCK 2, A REPLAT OF LOTS 5, 6, AND 7, BLOCK 2, THE PRESERVE AND A REPLAT OF LOTS 3, 4, 9, 10, 12, 13, AND 14, BLOCK 2, THE PRESERVE, ALL A REPLAT OF TRACT 4, MONUMENTS SHADOWS-PHASE IV SUBDIVISION TO THE CITY OF GERING, SCOTTS BLUFF COUNTY, NEBRASKA, A REPLAT OF PART OF BLOCK A, NELSON SUBDIVISION, SITUATED IN THE EAST HALF OF SECTION 34, TOWNSHIP 22 NORTH, RANGE 55 WEST OF THE 6TH P.M., CITY OF GERING, SCOTTS BLUFF COUNTY, NEBRASKA.

DATED THIS 2ND DAY OF April, 2012.

Stephen J. Doll President

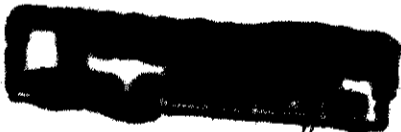
J.C. GERING, L.L.C., A LIMITED LIABILITY COMPANY
STEPHEN J. DOLL, PRESIDENT

ACKNOWLEDGMENT

STATE OF NEBRASKA)
COUNTY OF SCOTTS BLUFF)

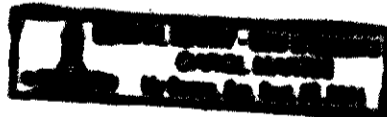
BEFORE ME, A NOTARY PUBLIC, QUALIFIED AND ACTING IN SAID COUNTY, PERSONALLY CAME STEPHEN J. DOLL, PRESIDENT OF J.C. GERING, L.L.C., A LIMITED LIABILITY COMPANY, TO ME KNOWN TO BE THE IDENTICAL PERSON WHOSE SIGNATURE IS AFFIXED TO THE FOREGOING "OWNER'S STATEMENT" AND ACKNOWLEDGED THE EXECUTION THEREOF TO BE HIS VOLUNTARY ACT AND DEED.

WITNESS MY NOTORIAL SEAL THIS 2ND DAY OF April, 2012.



Carol Marshall
NOTARY PUBLIC

MY COMMISSION EXPIRES JUNE 22, 2014



APPROVAL

THE FOREGOING PLAT OF LOTS 5B, 3A, 4A, 9A, 12A, AND 13A, BLOCK 2, A REPLAT OF LOTS 5A, BLOCK 2, A REPLAT OF LOTS 5, 6, AND 7, BLOCK 2, THE PRESERVE AND A REPLAT OF LOTS 3, 4, 9, 10, 12, 13, AND 14, BLOCK 2, THE PRESERVE, ALL A REPLAT OF TRACT 4, MONUMENTS SHADOWS-PHASE IV SUBDIVISION TO THE CITY OF GERING, SCOTTS BLUFF COUNTY, NEBRASKA, A REPLAT OF PART OF BLOCK A, NELSON SUBDIVISION, SITUATED IN THE EAST HALF OF SECTION 34, TOWNSHIP 22 NORTH, RANGE 55 WEST OF THE 6TH P.M., CITY OF GERING, NEBRASKA, WAS APPROVED BY THE CITY ADMINISTRATOR AND MAYOR OF THE CITY OF GERING, NEBRASKA, PURSUANT TO SECTION 19-916, REISSUE OF REVISED STATUTES OF NEBRASKA, AS AMENDED BY SECTION 19 OF L.B. 71, APPROVED MARCH 5, 1983, AND AMENDMENT TO ARTICLE 31, SECTION 31.307 BY ORDINANCE NO. 1517 TO THE CITY OF GERING, NEBRASKA.

Lore Danieles
LORE DANIELES
CITY ADMINISTRATOR

Brian E. Swenberg
BRIAN E. SWENBERG
CITY ENGINEER