



2010-4602

NUM INDEX J C
COMPUTER EA
PICTURED C
IMAGED _____

RECORDED
SCOTTS BLUFF COUNTY, NE

Date 9-9-10 Time 1:31pm

Inst. 2010 4602

Jean A. Bauer

REGISTER OF DEEDS

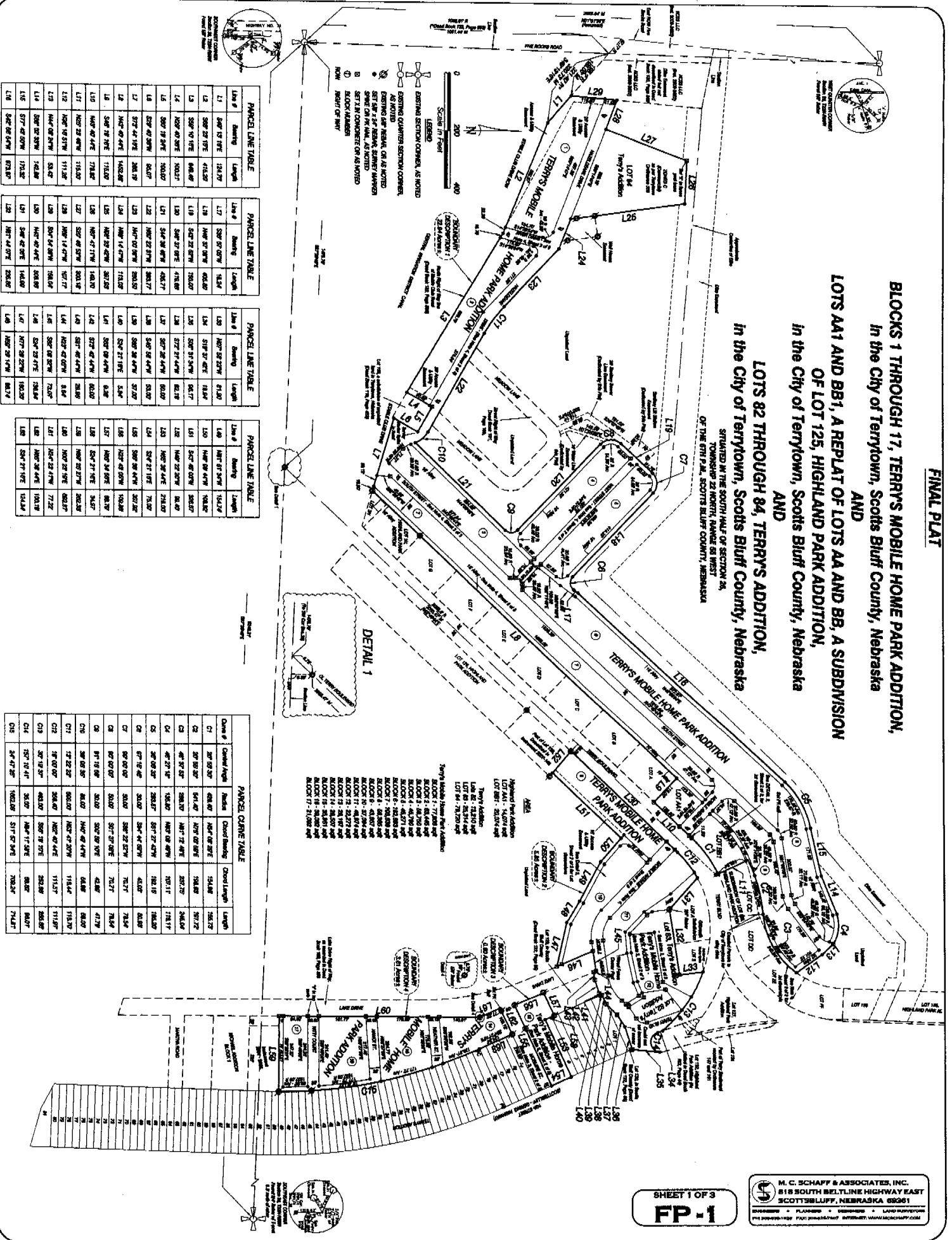
NUM PAGES 4
DOC TAX _____ PD _____ CHG _____ RET _____
FEES 32.50 PD _____ CHG RET _____
TOTAL 32.50
REC'D M.C. Schaff
RET _____

*RW
6A
6B*

THIS PAGE INCLUDED FOR INDEXING PURPOSES

FINAL PLAT

**BLOCKS 1 THROUGH 17, TERRY'S MOBILE HOME PARK ADDITION,
 AND
 LOTS AA1 AND BB1, A REPLAT OF LOTS AA AND BB, A SUBDIVISION
 OF LOT 125, HIGHLAND PARK ADDITION,
 IN THE CITY OF TERRYTOWN, SCOTTS BLUFF COUNTY, NEBRASKA
 AND
 LOTS 82 THROUGH 84, TERRY'S ADDITION,
 SITUATED IN THE SOUTH HALF OF SECTION 26,
 TOWNSHIP 22 NORTH, RANGE 68 WEST
 OF THE 6TH P.M., SCOTTS BLUFF COUNTY, NEBRASKA**



PANEL LINE TABLE

Line #	Bearing	Length
L1	S89°15'19"E	124.70
L2	S89°22'19"E	474.20
L3	S89°40'19"E	648.40
L4	S89°40'19"E	1042.7
L5	S89°19'34"E	1604.0
L6	S89°09'34"E	2617.0
L7	S72°44'19"E	2681.70
L8	S42°49'44"E	1462.20
L9	S42°49'44"E	1132.20
L10	S42°49'44"E	778.20
L11	S42°28'49"E	1118.20
L12	S42°49'44"E	1462.20
L13	S42°49'44"E	1132.20
L14	S42°49'44"E	778.20
L15	S77°42'07"E	175.20
L16	S42°49'44"E	778.20

PANEL LINE TABLE

Line #	Bearing	Length
L17	S39°37'07"E	163.20
L18	S42°49'44"E	405.20
L19	S42°22'07"E	782.07
L20	S42°22'07"E	1183.07
L21	S42°22'07"E	1584.07
L22	S42°22'07"E	2000.07
L23	S42°22'07"E	2400.07
L24	S42°22'07"E	2800.07
L25	S42°22'07"E	3200.07
L26	S42°22'07"E	3600.07
L27	S42°22'07"E	4000.07
L28	S42°22'07"E	4400.07
L29	S42°22'07"E	4800.07
L30	S42°22'07"E	5200.07
L31	S42°22'07"E	5600.07
L32	S42°22'07"E	6000.07
L33	S42°22'07"E	6400.07
L34	S42°22'07"E	6800.07
L35	S42°22'07"E	7200.07
L36	S42°22'07"E	7600.07
L37	S42°22'07"E	8000.07
L38	S42°22'07"E	8400.07
L39	S42°22'07"E	8800.07
L40	S42°22'07"E	9200.07
L41	S42°22'07"E	9600.07
L42	S42°22'07"E	10000.07
L43	S42°22'07"E	10400.07
L44	S42°22'07"E	10800.07
L45	S42°22'07"E	11200.07
L46	S42°22'07"E	11600.07
L47	S42°22'07"E	12000.07
L48	S42°22'07"E	12400.07
L49	S42°22'07"E	12800.07
L50	S42°22'07"E	13200.07
L51	S42°22'07"E	13600.07
L52	S42°22'07"E	14000.07
L53	S42°22'07"E	14400.07
L54	S42°22'07"E	14800.07
L55	S42°22'07"E	15200.07
L56	S42°22'07"E	15600.07
L57	S42°22'07"E	16000.07
L58	S42°22'07"E	16400.07
L59	S42°22'07"E	16800.07
L60	S42°22'07"E	17200.07
L61	S42°22'07"E	17600.07
L62	S42°22'07"E	18000.07
L63	S42°22'07"E	18400.07
L64	S42°22'07"E	18800.07
L65	S42°22'07"E	19200.07
L66	S42°22'07"E	19600.07
L67	S42°22'07"E	20000.07
L68	S42°22'07"E	20400.07
L69	S42°22'07"E	20800.07
L70	S42°22'07"E	21200.07
L71	S42°22'07"E	21600.07
L72	S42°22'07"E	22000.07
L73	S42°22'07"E	22400.07
L74	S42°22'07"E	22800.07
L75	S42°22'07"E	23200.07
L76	S42°22'07"E	23600.07
L77	S42°22'07"E	24000.07
L78	S42°22'07"E	24400.07
L79	S42°22'07"E	24800.07
L80	S42°22'07"E	25200.07
L81	S42°22'07"E	25600.07
L82	S42°22'07"E	26000.07
L83	S42°22'07"E	26400.07
L84	S42°22'07"E	26800.07
L85	S42°22'07"E	27200.07
L86	S42°22'07"E	27600.07
L87	S42°22'07"E	28000.07
L88	S42°22'07"E	28400.07
L89	S42°22'07"E	28800.07
L90	S42°22'07"E	29200.07
L91	S42°22'07"E	29600.07
L92	S42°22'07"E	30000.07
L93	S42°22'07"E	30400.07
L94	S42°22'07"E	30800.07
L95	S42°22'07"E	31200.07
L96	S42°22'07"E	31600.07
L97	S42°22'07"E	32000.07
L98	S42°22'07"E	32400.07
L99	S42°22'07"E	32800.07
L100	S42°22'07"E	33200.07
L101	S42°22'07"E	33600.07
L102	S42°22'07"E	34000.07
L103	S42°22'07"E	34400.07
L104	S42°22'07"E	34800.07
L105	S42°22'07"E	35200.07
L106	S42°22'07"E	35600.07
L107	S42°22'07"E	36000.07
L108	S42°22'07"E	36400.07
L109	S42°22'07"E	36800.07
L110	S42°22'07"E	37200.07
L111	S42°22'07"E	37600.07
L112	S42°22'07"E	38000.07
L113	S42°22'07"E	38400.07
L114	S42°22'07"E	38800.07
L115	S42°22'07"E	39200.07
L116	S42°22'07"E	39600.07
L117	S42°22'07"E	40000.07
L118	S42°22'07"E	40400.07
L119	S42°22'07"E	40800.07
L120	S42°22'07"E	41200.07
L121	S42°22'07"E	41600.07
L122	S42°22'07"E	42000.07
L123	S42°22'07"E	42400.07
L124	S42°22'07"E	42800.07
L125	S42°22'07"E	43200.07
L126	S42°22'07"E	43600.07
L127	S42°22'07"E	44000.07
L128	S42°22'07"E	44400.07
L129	S42°22'07"E	44800.07
L130	S42°22'07"E	45200.07
L131	S42°22'07"E	45600.07
L132	S42°22'07"E	46000.07
L133	S42°22'07"E	46400.07
L134	S42°22'07"E	46800.07
L135	S42°22'07"E	47200.07
L136	S42°22'07"E	47600.07
L137	S42°22'07"E	48000.07
L138	S42°22'07"E	48400.07
L139	S42°22'07"E	48800.07
L140	S42°22'07"E	49200.07
L141	S42°22'07"E	49600.07
L142	S42°22'07"E	50000.07
L143	S42°22'07"E	50400.07
L144	S42°22'07"E	50800.07
L145	S42°22'07"E	51200.07
L146	S42°22'07"E	51600.07
L147	S42°22'07"E	52000.07
L148	S42°22'07"E	52400.07
L149	S42°22'07"E	52800.07
L150	S42°22'07"E	53200.07
L151	S42°22'07"E	53600.07
L152	S42°22'07"E	54000.07
L153	S42°22'07"E	54400.07
L154	S42°22'07"E	54800.07
L155	S42°22'07"E	55200.07
L156	S42°22'07"E	55600.07
L157	S42°22'07"E	56000.07
L158	S42°22'07"E	56400.07
L159	S42°22'07"E	56800.07
L160	S42°22'07"E	57200.07
L161	S42°22'07"E	57600.07
L162	S42°22'07"E	58000.07
L163	S42°22'07"E	58400.07
L164	S42°22'07"E	58800.07
L165	S42°22'07"E	59200.07
L166	S42°22'07"E	59600.07
L167	S42°22'07"E	60000.07
L168	S42°22'07"E	60400.07
L169	S42°22'07"E	60800.07
L170	S42°22'07"E	61200.07
L171	S42°22'07"E	61600.07
L172	S42°22'07"E	62000.07
L173	S42°22'07"E	62400.07
L174	S42°22'07"E	62800.07
L175	S42°22'07"E	63200.07
L176	S42°22'07"E	63600.07
L177	S42°22'07"E	64000.07
L178	S42°22'07"E	64400.07
L179	S42°22'07"E	64800.07
L180	S42°22'07"E	65200.07
L181	S42°22'07"E	65600.07
L182	S42°22'07"E	66000.07
L183	S42°22'07"E	66400.07
L184	S42°22'07"E	66800.07
L185	S42°22'07"E	67200.07
L186	S42°22'07"E	67600.07
L187	S42°22'07"E	68000.07
L188	S42°22'07"E	68400.07
L189	S42°22'07"E	68800.07
L190	S42°22'07"E	69200.07
L191	S42°22'07"E	69600.07
L192	S42°22'07"E	70000.07
L193	S42°22'07"E	70400.07
L194	S42°22'07"E	70800.07
L195	S42°22'07"E	71200.07
L196	S42°22'07"E	71600.07
L197	S42°22'07"E	72000.07
L198	S42°22'07"E	72400.07
L199	S42°22'07"E	72800.07
L200	S42°22'07"E	73200.07
L201	S42°22'07"E	73600.07
L202	S42°22'07"E	74000.07
L203	S42°22'07"E	74400.07
L204	S42°22'07"E	74800.07
L205	S42°22'07"E	75200.07
L206	S42°22'07"E	75600.07
L207	S42°22'07"E	76000.07
L208	S42°22'07"E	76400.07
L209	S42°22'07"E	76800.07
L210	S42°22'07"E	77200.07
L211	S42°22'07"E	77600.07
L212	S42°22'07"E	78000.07
L213	S42°22'07"E	78400.07
L214	S42°22'07"E	78800.07
L215	S42°22'07"E	79200.07
L216	S42°22'07"E	79600.07
L217	S42°22'07"E	80000.07
L218	S42°22'07"E	80400.07
L219	S42°22'07"E	80800.07
L220	S42°22'07"E	81200.07
L221	S42°22'07"E	81600.07
L222	S42°22'07"E	82000.07
L223	S42°22'07"E	82400.07
L224	S42°22'07"E	82800.07
L225	S42°22'07"E	83200.07
L226	S42°22'07"E	83600.07
L227	S42°22'07"E	84000.07
L228	S42°22'07"E	84400.07
L229	S42°22'07"E	84800.07
L230	S42°22'07"E	85200.07
L231	S42°22'07"E	85600.07
L232	S42°22'07"E	86000.07
L233	S42°22'07"E	86400.07
L234	S42°22'07"E	86800.07
L235	S42°22'07"E	87200.07
L236	S42°22'07"E	87600.07
L237	S42°22'07"E	88000.07
L238	S42°22'07"E	88400.07
L239	S42°22'07"E	88800.07
L240	S42°22'07"E	89200.07
L241	S42°22'07"E	89600.07
L242	S42°22'07"E	90000.07
L243	S42°22'07"E	90400.07
L244	S42°22'07"E	90800.07
L245	S42°22'07"E	91200.07
L246	S42°22'07"E	91600.07
L247	S42°22'07"E	92000.07
L248	S42°22'07"E	92400.07
L249	S42°22'07"E	92800.07
L250	S42°22'07"E	93200.07
L251	S42°22'07"E	93600.07
L252	S42°22'07"E	94000.07
L253	S42°22'07"E	94400.07
L254	S42°22'07"E	94800.07
L255	S42°22'07"E	95200.07
L256	S42°22'07"E	95600.07
L257	S42°22'07"E	96000.07
L258	S42°22'07"E	96400.07
L259	S42°22'07"E	96800.07
L260	S42°22'07"E	97200.07
L261	S42°22'07"E	97600.07
L262	S42°22'07"E	98000.07
L263	S42°22'07"E	98400.07
L264	S42°22'07"E	98800.07
L265	S42°22'07"E	99200.07
L266	S42°22'07"E	99600.07
L267	S42°22'07"E	100000.07
L268	S42°22'07"E	100400.07
L269	S42°22'07"E	100800.07
L270	S42°22'07"E	101200.07
L271	S42°22'07"E	101600.07
L272	S42°22'07"E	102000.07
L273	S42°22'07"E	102400.07
L274	S42°22'07"E	102800.07
L275	S42°22'07"E	103200.07
L276	S42°22'07"E	103600.07
L277	S42°22'07"E	104000.07
L278	S42°22'07"E	104400.07
L279	S42°22'07"E	104800.07
L280	S42°22'07"E	105200.07
L281	S42°22'07"E	105600.07
L282	S42°22'07"E	106000.07
L283	S42°22'07"E	106400.07
L284	S42°22'07"E	106800.07
L285	S42°22'07"E	107200.07
L286	S42°22'07"E	107600.07
L287	S42°22'07"E	108000.07
L288	S42°22'07"E	108400.07
L289	S42°22'07"E	108800.07
L290	S42°22'07"E	109200.07
L291	S42°22'07"E	109600.07
L292	S42°22'07"E	110000.07
L293	S42°22'07"E	110400.07
L294	S42°22'07"E	110800.07
L295	S42°22'07"E	111200.07
L296	S42°22'07"E	111600.07
L297	S42°22'07"E	112000.07
L298	S42°22'07"E	112400.07
L		

BLOCKS 1 - 17, TERRY'S MOBILE HOME PARK ADDITION, LOTS AA1 AND BB1, HIGHLAND PARK ADDITION, LOTS 82 - 84, TERRY'S ADDITION TERRYTOWN, NEBRASKA SHEET 2 OF 2
3 3

OWNER'S STATEMENT

We, the undersigned, being the owners of that land as described in the foregoing 'Surveyor's Certificate' and shown on the accompanying plat have caused such real estate to be platted as BLOCKS 1 THROUGH 17, TERRY'S MOBILE HOME PARK ADDITION, LOTS AA1 AND BB1, HIGHLAND PARK ADDITION, AND LOTS 82 THROUGH 84, TERRY'S ADDITION TO THE CITY OF TERRYTOWN, SCOTTS BLUFF COUNTY, NEBRASKA, situated in the south half of Section 26, Township 22 North, Range 55 West of the 6th P.M., Scotts Bluff County, Nebraska,

That the foregoing plat is made with the free consent and in accordance with the desires of the undersigned owners. We hereby dedicate the streets, alleys, access easements, and utility easements including those as referenced in the general notes that are shown on the final plat for the use and benefit of the public.

Dated this 7th day of May, 2009.

* A Replat of Lots AA and BB, A SUBDIVISION of LOT 125 KAS

Owner:
Terry Carpenter, Inc.

Janet Pierce
By: Janet Pierce, Secretary

ACKNOWLEDGMENT

STATE OF NEBRASKA;

COUNTY OF SCOTTS BLUFF;

Before me, a Notary Public, qualified and acting in said County, personally came Janet Pierce, secretary for Terry Carpenter, Inc, to me known to be the identical person whose signature is affixed to the foregoing 'Owner's Statement' and acknowledged the execution thereof to be her voluntary act and deed and the voluntary act and deed of Terry Carpenter, Inc.

WITNESS MY HAND AND SEAL THIS 7th DAY OF May, 2009.



Rosaura Lentes
Notary Public

My Commission Expires _____

APPROVAL AND ACCEPTANCE

The foregoing plat of BLOCKS 1 THROUGH 17, TERRY'S MOBILE HOME PARK ADDITION, LOTS AA1 AND BB1, HIGHLAND PARK ADDITION AND LOTS 82 THROUGH 84, TERRY'S ADDITION TO THE CITY OF TERRYTOWN, SCOTTS BLUFF COUNTY, NEBRASKA, is hereby approved by the Mayor and City Council of the City of Terrytown, Scotts Bluff County, Nebraska, by resolution duly passed this 5th day of August, 2009. 2010

Kent Greenwalt
Kent Greenwalt, Mayor

ATTEST:

Patricia P. Miller
City Clerk