



2009-1962

RECORDED
SCOTTS BLUFF COUNTY, NE

NUM INDEX
COMPUTER
PICTURED
IMAGED:

Date 4-21-09 Time 10:02am

Inst. 2009 1962
Jean A. Bauer

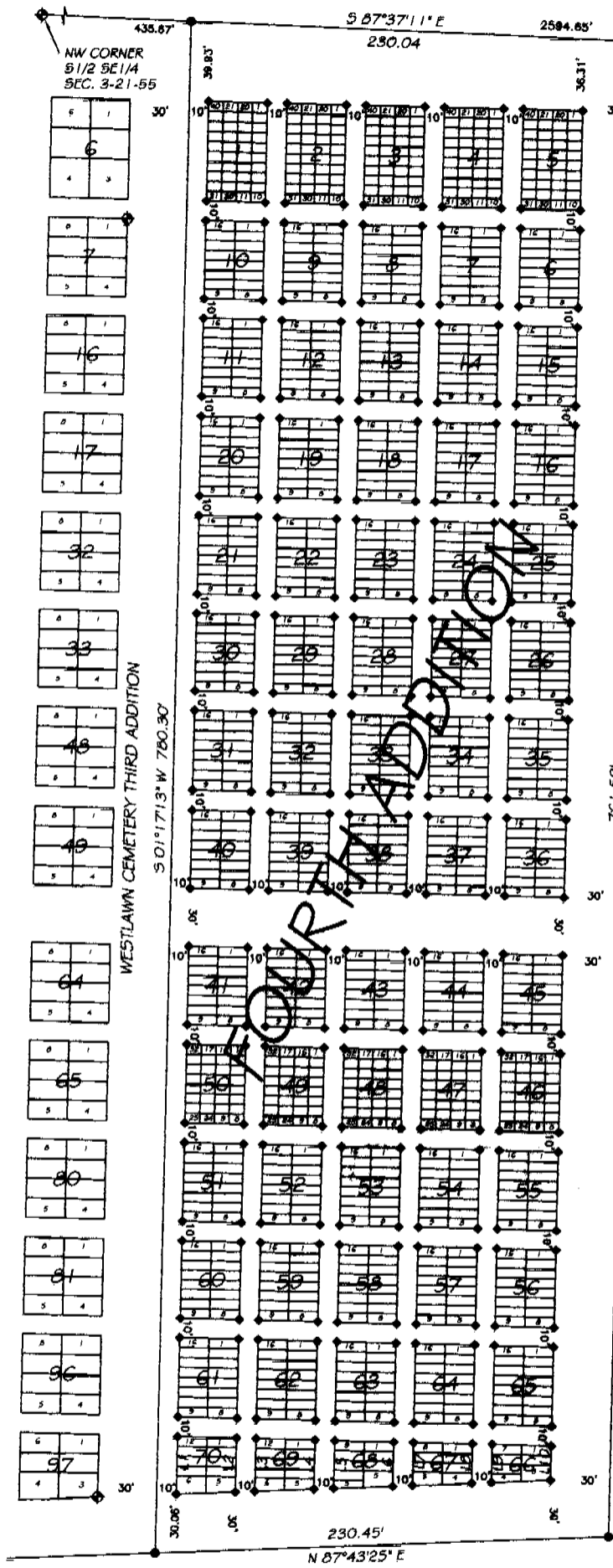
NUM PAGES 3
INOC TAX PD CHG RET
FEE'S 50.50 PD CHG RET
TOTAL 50.50
REC'D City of Hering
RET Office Use Only

REGISTER OF DEEDS

THIS PAGE INCLUDED FOR INDEXING

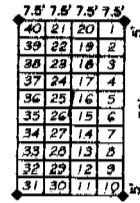
BLOCKS 1-70, WESTLAWN CEMETERY FOURTH ADDITION

A PART OF THE SOUTH HALF OF THE SOUTHEAST QUARTER OF SECTION 3,
TOWNSHIP 21 NORTH, RANGE 55 WEST OF THE 6TH P.M., SCOTTS BLUFF COUNTY, NEBRASKA.

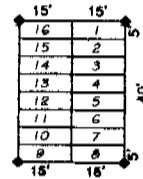


NE CORNER
S 1/2 SE 1/4
SEC. 3-21-55

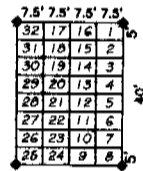
TYPICAL (NTS)
BLOCKS 1-5



TYPICAL (NTS)
BLOCKS 6-45 & 51-65

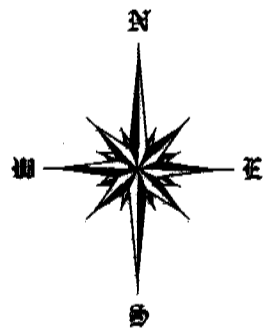


TYPICAL (NTS)
BLOCKS 46-50



LINE TABLE

LINE	BEARING	DISTANCE
L1	N 01°17'13\"E	29.50'
L2	N 01°17'13\"E	27.63'
L3	N 01°17'13\"E	27.00'
L4	S 01°17'13\"W	25.14'
L5	N 01°17'13\"E	24.51'
L6	S 01°17'13\"W	22.65'
L7	S 01°17'13\"W	22.02'
L8	S 01°17'13\"W	20.15'
L9	S 01°17'13\"W	19.53'
L10	N 01°17'13\"E	17.66'



SCALE 1"=60'

LEGEND

- ◆ = CORNER FOUND
- = CORNER SET 5/8x24\" REBAR
- ◐ = CORNER SET 1/2x24\" REBAR

BLOCKS 1-70, WESTLAWN CEMETERY FOURTH ADDITION
 A PART OF THE SOUTH HALF OF THE SOUTHEAST QUARTER OF SECTION 3,
 TOWNSHIP 21 NORTH, RANGE 55 WEST OF THE 6TH P.M., SCOTTS BLUFF COUNTY, NEBRASKA.

SURVEYOR'S CERTIFICATE

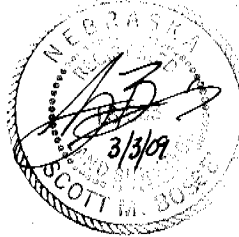
I, SCOTT M. BOSSE, A NEBRASKA REGISTERED LAND SURVEYOR, HEREBY CERTIFY I HAVE SURVEYED AND PREPARED A PLAT OF BLOCKS 1-70, WESTLAWN CEMETERY FOURTH ADDITION, SCOTTS BLUFF COUNTY, NEBRASKA, BEING A PART OF THE SOUTH HALF OF THE SOUTHEAST QUARTER OF SECTION 3, TOWNSHIP 21 NORTH, RANGE 55 WEST OF THE 6TH PRINCIPAL MERIDIAN, SCOTTS BLUFF COUNTY, NEBRASKA, MORE PARTICULARLY DESCRIBED AS FOLLOWS:

REFERRING TO THE NORTHWEST CORNER OF THE SOUTH HALF OF THE SOUTHEAST QUARTER OF SAID SECTION 3; THENCE, ON THE NORTH LINE OF SAID SOUTH HALF, S87°37'11"E TO THE NORTHEAST CORNER OF PREVIOUSLY PLATTED WESTLAWN CEMETERY THIRD ADDITION, BEING A DISTANCE OF 435.67 FEET, SAID POINT ALSO BEING THE TRUE POINT OF BEGINNING; THENCE ON THE EAST LINE OF SAID THIRD ADDITION, S01°17'13"W TO THE SOUTHEAST CORNER OF SAID THIRD ADDITION, BEING A DISTANCE OF 780.30 FEET; THENCE, N87°43'25"E FOR A DISTANCE OF 230.45 FEET; THENCE, PARALLEL WITH THE EAST LINE OF SAID THIRD ADDITION, N01°17'13"E TO THE NORTH LINE OF SAID SOUTH HALF, BEING A DISTANCE OF 761.59 FEET; THENCE, ON SAID NORTH LINE, N87°37'11"W FOR A DISTANCE OF 230.04 FEET TO THE TRUE POINT OF BEGINNING, CONTAINING AN AREA OF 4.07 ACRES, MORE OR LESS.

THAT THE ACCOMPANYING PLAT IS A TRUE DELINEATION OF SAID SURVEY, DRAWN TO TO SCALE OF 60 FEET TO THE INCH, THAT ALL DIMENSIONS ARE IN FEET AND DECIMALS. THAT EACH BLOCK HAS ITS OWN NUMBER. THAT THE BOUNDARY OF THE PLAT IS DRAWN WITH A HEAVY SOLID LINE AND THAT ALL CORNERS FOUND OR SET ARE MARKED AS SHOWN.

WITNESS MY HAND AND SEAL THIS 3RD DAY OF MARCH, 2009.


 SCOTT M. BOSSE, A NEBRASKA REGISTERED LAND SURVEYOR, L.S. 603



OWNERS STATEMENT

WE, THE UNDERSIGNED, BEING THE OWNERS OF THAT PART OF THE SOUTH HALF OF THE SOUTHEAST QUARTER OF SECTION 3, TOWNSHIP 21 NORTH, RANGE 55 WEST OF THE 6TH PRINCIPAL MERIDIAN, SCOTTS BLUFF COUNTY, NEBRASKA, AS DESCRIBED IN THE FOREGOING "SURVEYOR'S CERTIFICATE" AND SHOWN ON THE ACCOMPANYING PLAY HAVE CAUSED SUCH REAL ESTATE TO BE PLATTED AS BLOCKS 1-70, WESTLAWN CEMETERY FOURTH ADDITION, SCOTTS BLUFF COUNTY, NEBRASKA, BEING A PART OF THE SOUTH HALF OF THE SOUTHEAST QUARTER OF SECTION 3, TOWNSHIP 21 NORTH, RANGE 55 WEST OF THE 6TH PRINCIPAL MERIDIAN, SCOTTS BLUFF COUNTY, NEBRASKA.

THAT THE FOREGOING PLAT WAS MADE WITH THE FREE CONSENT AND IN ACCORDANCE WITH THE DESIRES OF THE UNDERSIGNED OWNERS. WE HEREBY DEDICATE THE ACCESS AND EASEMENTS SHOWN ON THE PLAT TO THE USE AND BENEFIT OF THE PUBLIC.

DATED THIS 13TH DAY OF April, 2009.

BY: CITY OF GERING, NEBRASKA



 SUSAN WIEDEMAN, MAYOR

ACKNOWLEDGMENT

STATE OF NEBRASKA)
 COUNTY OF SCOTTS BLUFF)

BEFORE ME, A NOTARY PUBLIC, QUALIFIED AND ACTING IN SAID COUNTY, PERSONALLY CAME SUSAN WIEDEMAN, MAYOR OF THE CITY OF GERING, NEBRASKA, TO ME KNOWN TO BE THE IDENTICAL PERSON WHOSE SIGNATURE IS AFFIXED TO THE FOREGOING "OWNER'S STATEMENT" AND ACKNOWLEDGED THE EXECUTION THEREOF TO BE THEIR VOLUNTARY ACT AND DEED.

WITNESS MY NOTORIAL SEAL THIS 13TH DAY OF April, 2009.

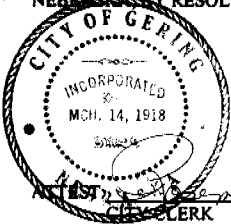

 ROSALIND D. RUSSELL
 NOTARY PUBLIC

MY COMMISSION EXPIRES: 4/4/12



APPROVAL AND ACCEPTANCE

THE FOREGOING PLAT OF BLOCKS 1-70, WESTLAWN CEMETERY FOURTH ADDITION, SCOTTS BLUFF COUNTY, NEBRASKA, BEING A PART OF THE SOUTH HALF OF THE SOUTHEAST QUARTER OF SECTION 3, TOWNSHIP 21 NORTH, RANGE 55 WEST OF THE 6TH PRINCIPAL MERIDIAN, SCOTTS BLUFF COUNTY, NEBRASKA. IS HEREBY APPROVED AND ACCEPTED BY THE MAYOR AND CITY COUNCIL OF THE CITY OF GERING, SCOTTS BLUFF COUNTY, NEBRASKA, BY RESOLUTION DATED THIS 13TH DAY OF April, 2009.




 MAYOR-SUSAN WIEDEMAN


 CLERK

SHEET 2 OF 2	WESTLAWN FOURTH ADDITION CITY OF GERING	PROJECT: WESTLAWN CEMETERY GERING, NE	CLIENT: CITY OF GERING	PAUL REED CONSTRUCTION AND SUPPLY, INC. 880 EAST COUNTRY CLUB ROAD GERING, NE 69341 PHONE: (308)-636-2213 FAX: (308)-635-0182	Scale: 1"=60' Date: 02/17/2009 DRAWN: BMB REVISED:
-----------------	---	---	---------------------------	---	---