



2008-5938

NUM INDEX
COMPUTER
PICTURED
IMAGED

RECORDED
SCOTTS BLUFF COUNTY, NE

Date 11-3-08 Time 1:34 pm

Inst. 2008 5938
Jean A. Bauer

NUM PAGES 3
DOC TAX PD CHG RET
FEES 14.50 PD CHG RET
TOTAL
REC'D *M.C. Schaff*
RET

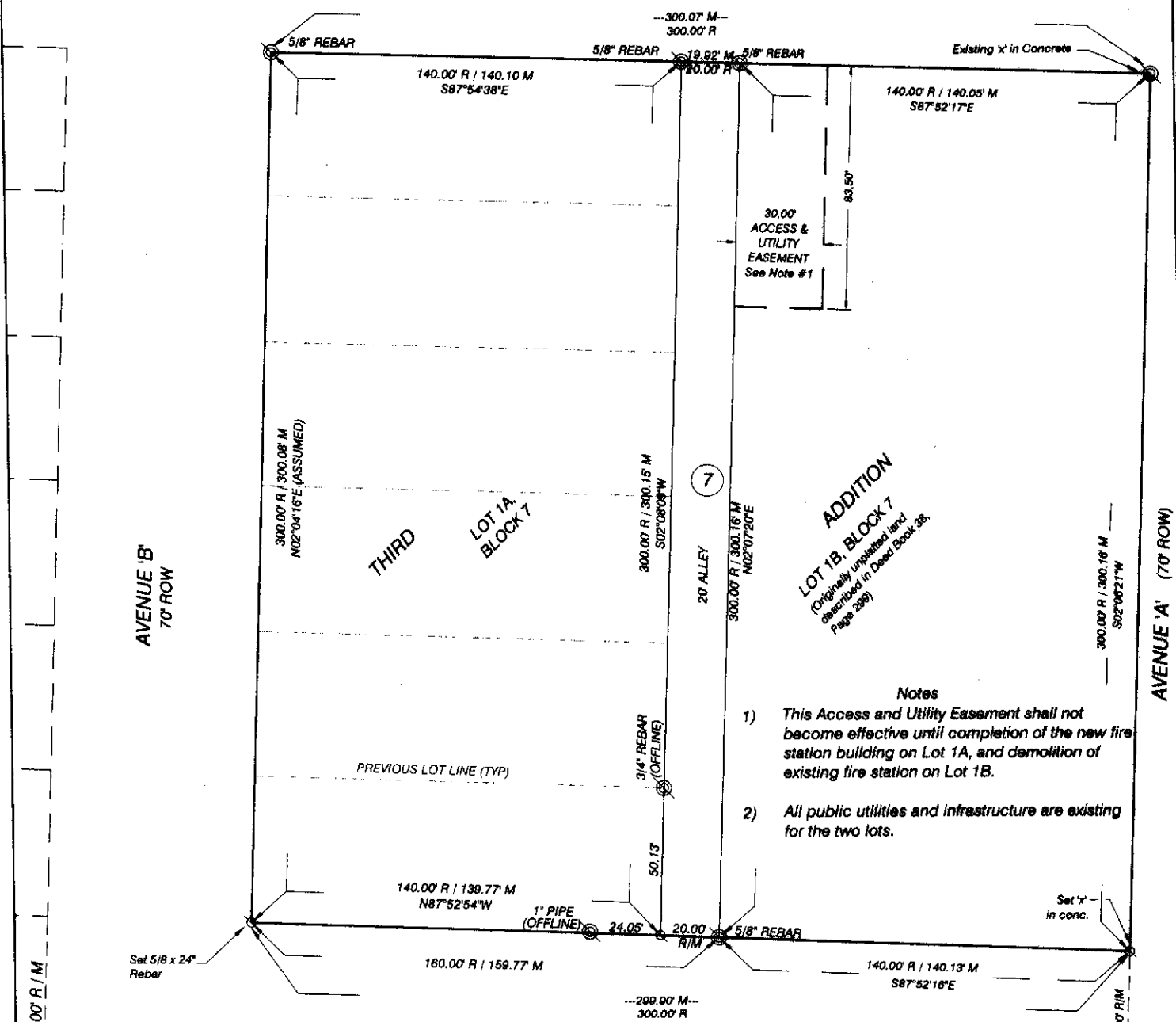
REGISTER OF DEEDS

FINAL PLAT

LOTS 1A AND 1B, BLOCK 7, THIRD ADDITION TO THE CITY OF SCOTTSBLUFF, SCOTTS BLUFF COUNTY, NEBRASKA

A REPLAT OF LOTS 1 THROUGH 6, BLOCK 7, THIRD ADDITION, AND UNPLATTED LAND IN THE NW 1/4 SE 1/2 OF SECTION 23, TOWNSHIP 22 NORTH, RANGE 55 WEST OF THE 6TH P.M., IN THE CITY OF SCOTTSBLUFF, SCOTTS BLUFF COUNTY, NEBRASKA

19TH STREET
60' ROW

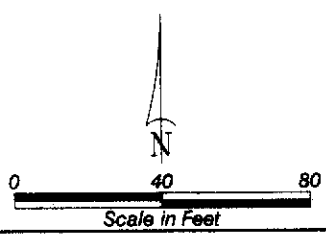


- Notes
- 1) This Access and Utility Easement shall not become effective until completion of the new fire station building on Lot 1A, and demolition of existing fire station on Lot 1B.
 - 2) All public utilities and infrastructure are existing for the two lots.

ADDITION
LOT 1B, BLOCK 7
(Originally unplatted land described in Deed Book 38, Page 299)

LEGEND

- EXISTING MONUMENT, AS NOTED
- SET 5/8" x 24" REBAR (UNLESS OTHERWISE NOTED)
- M MEASURED DISTANCE
- R RECORD DISTANCE
- ROW RIGHT OF WAY
- ⑦ BLOCK NUMBER



LOTS 1A AND 1B, BLOCK 7, THIRD ADDITION
 REPLAT OF LOTS 1 - 6, BLOCK 7, THIRD ADDITION
 AND UNPLATTED LAND
 SCOTTSBLUFF, NEBRASKA
 SHEET 2 OF 3

SURVEYOR'S CERTIFICATE

I, Kelly A. Beatty, a Nebraska Registered Land Surveyor, hereby certify that I have surveyed and prepared a plat of Lots 1A and 1B, Block 7, Third Addition, to the City of Scottsbluff, Scotts Bluff County, Nebraska, a Replat of Lots 1 through 6, Block 7, Third Addition, to the City of Scottsbluff, Nebraska and unplatted land in the NW $\frac{1}{4}$ SE $\frac{1}{4}$ of Section 23, Township 22 North, Range 55 West of the 6th P. M., Scotts Bluff County, Nebraska, said unplatted land more particularly described by deed as follows:

Commencing at the intersection of the north line of 18th Street, with the west line of Avenue A of the Original Town of Scottsbluff, Nebraska, according to the recorded plat thereof, said point being 60 feet north of the northeast corner of Block numbered Four of said Town; thence running north in the continuation of the west line of said Avenue A 300 feet; thence west at right angles to said west line 140 feet; thence south parallel with said west line 300 feet to the north line of 18th Street; thence east on said north line 140 feet to the place of beginning, all located in the City of Scottsbluff, County of Scottsbluff, State of Nebraska.

That the accompanying plat is a true delineation of such survey drawing to a scale of 40 feet to the inch. That all dimensions are in feet and decimals. That each lot and block has its own number and that the boundary of the plat is shown with a heavy solid line. That all corners found or set are marked as shown.

WITNESS MY HAND AND SEAL THIS 11th DAY OF September, 2008.

Kelly A. Beatty

Kelly A. Beatty, Nebraska Registered Land Surveyor, L.S. 476



OWNER'S STATEMENT

We, the undersigned, being the owners of Lots 1 through 6, Block 7, Third Addition, to the City of Scottsbluff, Scotts Bluff County, Nebraska, and unplatted land described in Deed Book 38, Page 299, situated in the NW $\frac{1}{4}$ SE $\frac{1}{4}$ of Section 23, Township 22 North, Range 55 West of the 6th P. M., in the City of Scottsbluff, Scotts Bluff County, Nebraska and described in the foregoing 'Surveyor's Certificate' and shown on the accompanying plat have caused such real estate to be platted as LOTS 1A AND 1B, BLOCK 7, THIRD ADDITION, to the City of Scottsbluff, Scotts Bluff County, Nebraska, a Replat of Lots 1 through 6, Block 7, Third Addition to the City of Scottsbluff, Scotts Bluff County, Nebraska, and unplatted land described in Deed Book 38, Page 299 and situated in the NW $\frac{1}{4}$ of the SE $\frac{1}{4}$ of Section 23, Township 22 North, Range 55 West of the 6th P.M., Scotts Bluff County, Nebraska.

That the foregoing plat is made with the free consent and in accordance with the desires of the undersigned owners. We hereby dedicate the easement shown on the plat for the use and benefit of the Public, as noted on the plat.

Dated this 24th day of October, 2008.

City of Scottsbluff, Nebraska

Randy Meininger
 by: Randy Meininger, Mayor

LOTS 1A AND 1B, BLOCK 7, THIRD ADDITION
REPLAT OF LOTS 1 - 6, BLOCK 7, THIRD ADDITION
AND UNPLATTED LAND
SCOTTSBLUFF, NEBRASKA
SHEET 3 OF 3

ACKNOWLEDGEMENT

STATE OF NEBRASKA)
COUNTY OF SCOTTS BLUFF)

Before me, a Notary Public, qualified and acting in said County, personally came Randy Meininger, Mayor of the City of Scottsbluff, Scotts Bluff County, Nebraska, to me known to be the identical person whose signature is affixed to the foregoing 'Owner's Statement' and acknowledged the execution thereof to be his voluntary act and deed.

WITNESS MY HAND AND SEAL THIS 24th DAY OF October, 2008.



Bonnie Otte
Notary Public

My Commission Expires 11-22-09

APPROVAL AND ACCEPTANCE

The forgoing plat of LOTS 1A AND 1B, BLOCK 7, THIRD ADDITION, to the City of Scottsbluff, Scotts Bluff County, Nebraska, a Replat of Lots 1 through 6, Block 7, Third Addition to the City of Scottsbluff, Scotts Bluff County, Nebraska, and unplatted land described in Deed Book 38, Page 299, situated in the NW 1/4 of the SE 1/4 of Section 23, Township 22 North, Range 55 West of the 6th P.M., Scotts Bluff County, Nebraska, is hereby approved by the Mayor and City Council of the City of Scottsbluff, Scotts Bluff County, Nebraska by resolution duly passed this 24th day of October, 2008.

Randy Meininger
Mayor

ATTEST:

Agatha A. Dickinson
City Clerk

