

Inst. 2006 - 3658

RECORDED
SCOTT'S BLUFF COUNTY, NE

Date 6-13-06 Time 11:09 AM

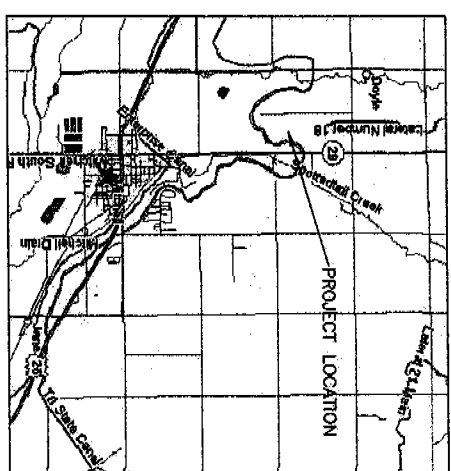
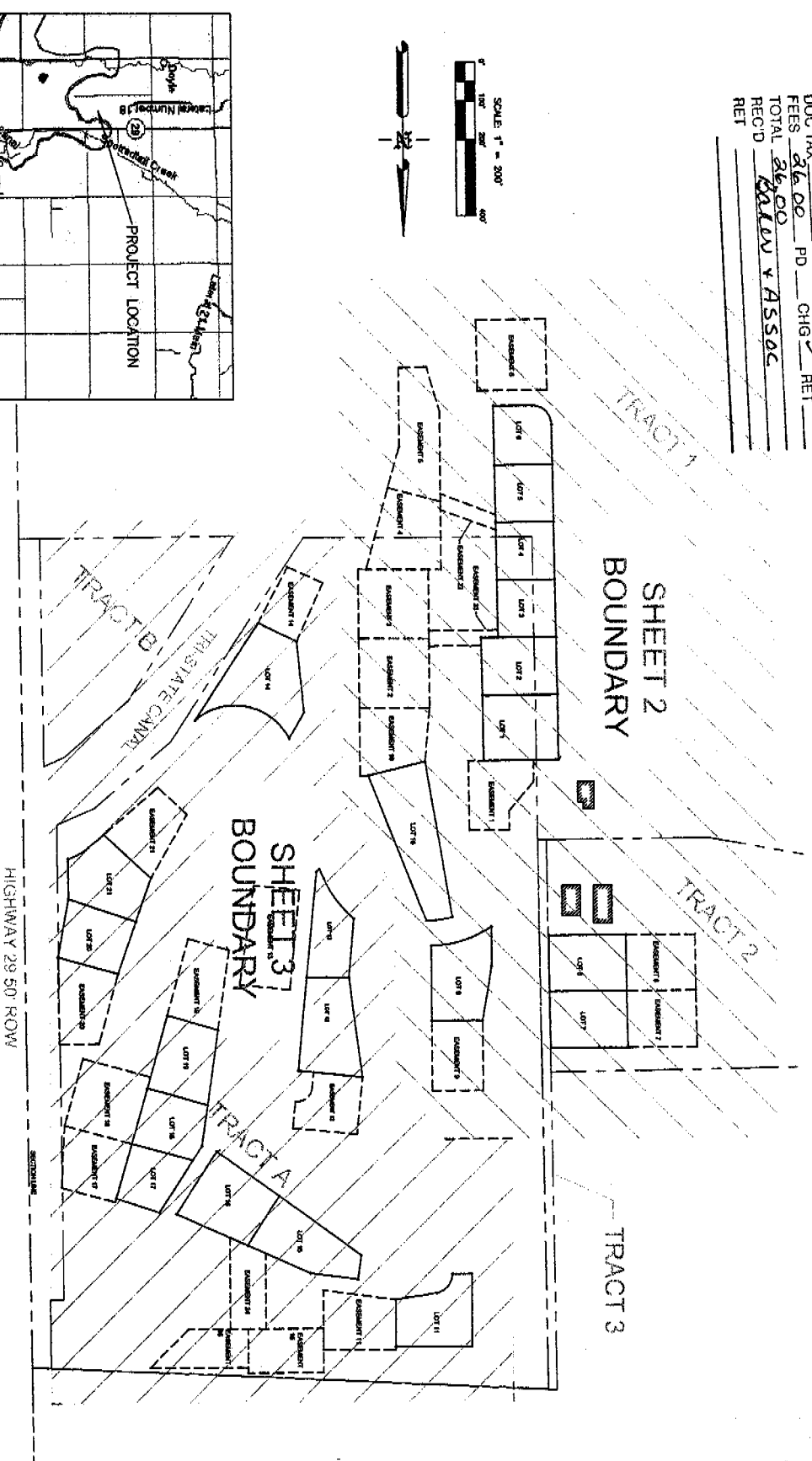
Jan A. Bauer
REGISTER OF DEEDS

AMENDED FINAL PLAT

A Replat of Lots 1-6
SCENIC KNOLLS SUBDIVISION,
SCOTT'S BLUFF COUNTY, NEBRASKA
SITUATED IN THE SOUTHEAST QUARTER OF SECTION 9, AND THE NORTHEAST
QUARTER OF SECTION 10, TOWNSHIP 23 NORTH, RANGE 56 WEST OF THE 6TH
PRINCIPAL MERIDIAN, SCOTT'S BLUFF COUNTY, NEBRASKA

NUM INDEX M 2
COMPUTER 2
PICTURED 2
IMAGED _____

NUM PAGES 4 PD _____ CHG _____ RET _____
DOC TAX 26.00 PD _____ CHG _____ RET _____
FEES 26.00 PD _____ CHG _____ RET _____
TOTAL 26.00
REC'D BAUER & ASSOC
RET _____



OVERVIEW MAP

Prepared by:
Baker
Associates
INC.

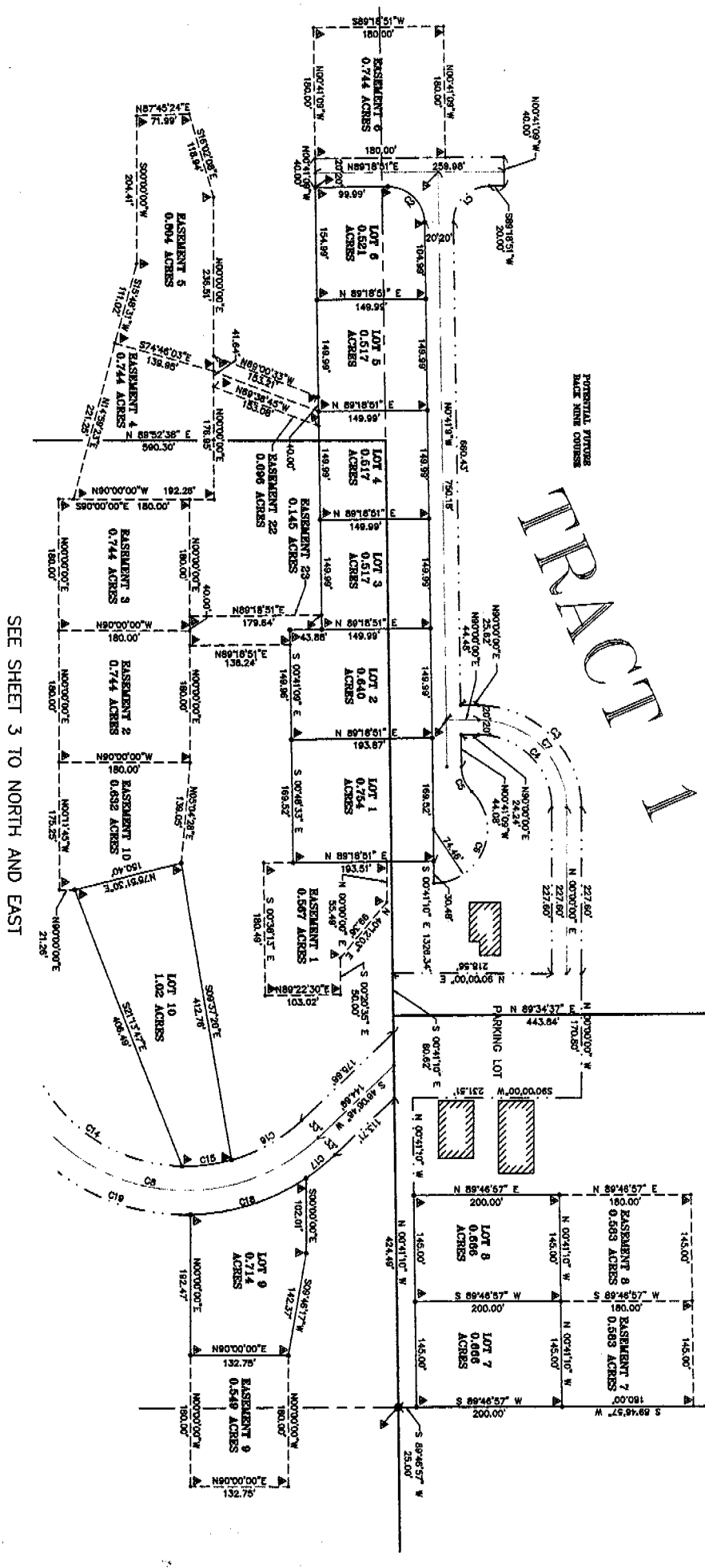
AMENDED FINAL PLAT

A Replat of Lots 1-6

**SCENIC KNOLLS SUBDIVISION,
 SCOTT'S BLUFF COUNTY, NEBRASKA**

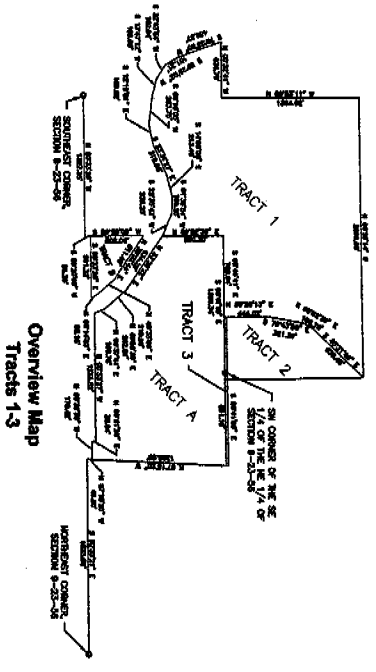
SITUATED IN THE SOUTHEAST QUARTER OF SECTION 9, AND THE NORTHEAST QUARTER OF SECTION 16, TOWNSHIP 23 NORTH, RANGE 56 WEST OF THE 6TH PRINCIPAL MERIDIAN, SCOTT'S BLUFF COUNTY, NEBRASKA

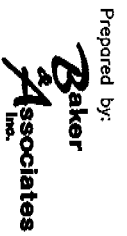
Inst. 2006 - 3658



SEE SHEET 3 TO NORTH AND EAST

SEE SHEET 3 TO NORTH AND EAST





Prepared by:

AMENDED FINAL PLAT

A Plat of Lots 1-6

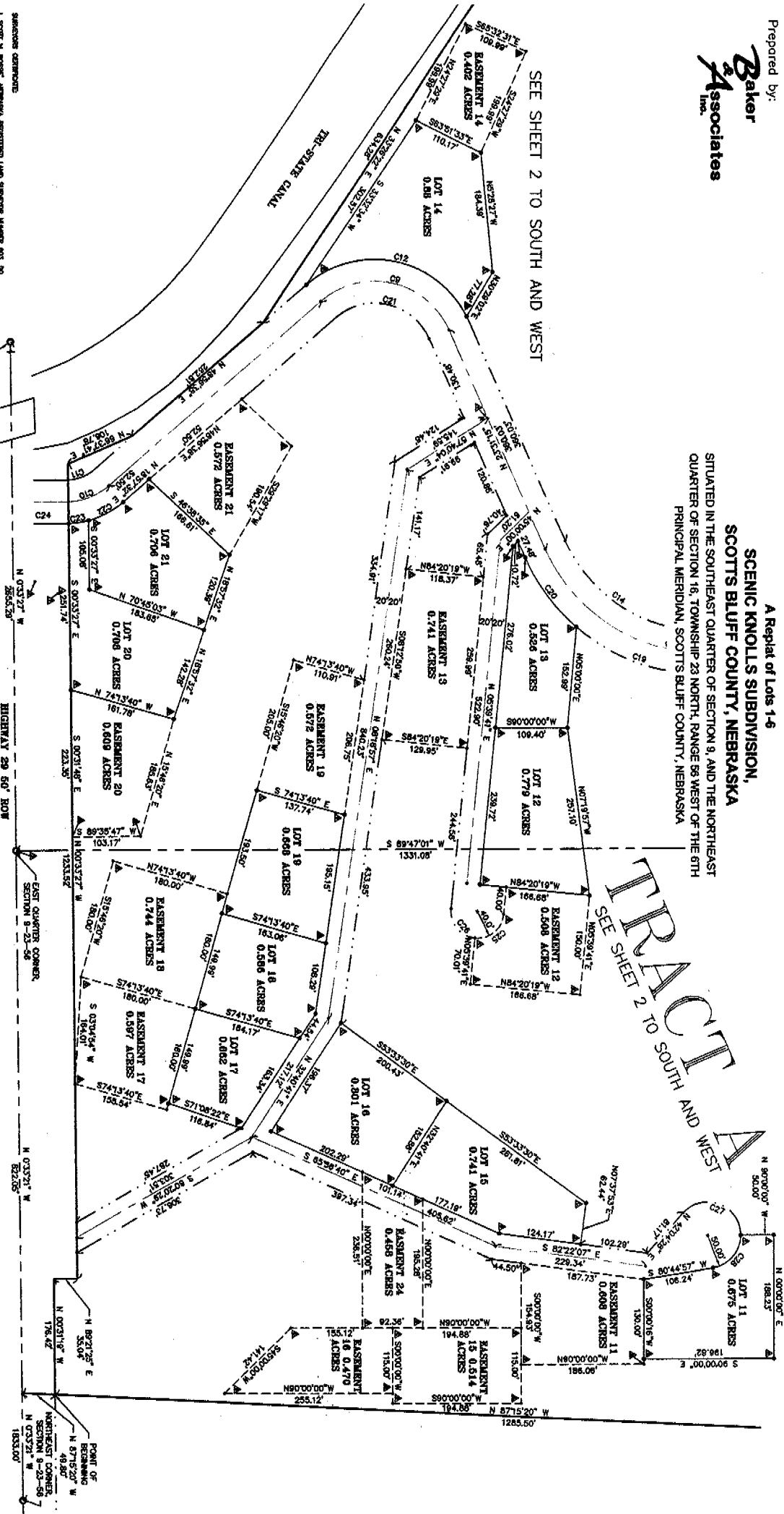
SCENIC KNOLLS SUBDIVISION,
SCOTTS BLUFF COUNTY, NEBRASKA
SITUATED IN THE SOUTHEAST QUARTER OF SECTION 9, AND THE NORTHEAST QUARTER OF SECTION 16, TOWNSHIP 23 NORTH, RANGE 58 WEST OF THE 6TH PRINCIPAL MERIDIAN, SCOTTS BLUFF COUNTY, NEBRASKA

Inst. 2006 - 3658

SHEET 3 OF 4

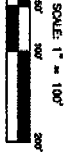
SEE SHEET 2 TO SOUTH AND WEST

TRACT A
SEE SHEET 2 TO SOUTH AND WEST

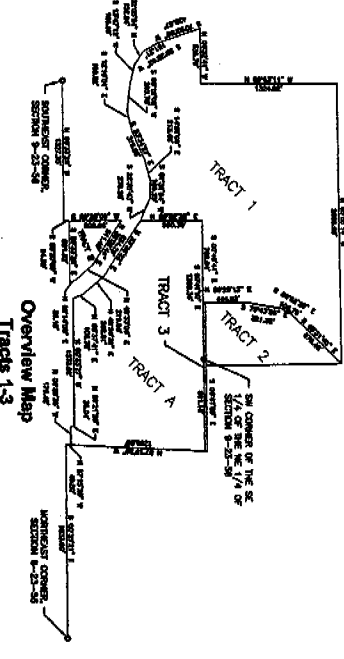


SURVEYING CONTROLS:
1. SCOTT BLUFF, NEBRASKA, REGISTERED LAND SURVEYOR, HAS THE SOLE RESPONSIBILITY FOR THE ACCURACY OF THIS PLAT AND THE ACCURACY OF THE INFORMATION HEREON. HE IS NOT RESPONSIBLE FOR ANY ERRORS OR OMISSIONS THAT MAY OCCUR IN THE FUTURE.
2. THIS PLAT IS BASED ON THE RECORDS OF THE SURVEYING DIVISION OF THE DEPARTMENT OF REVENUE, WHICH ARE THE OFFICIAL RECORDS OF THE SURVEYING DIVISION OF THE DEPARTMENT OF REVENUE, STATE OF NEBRASKA.
3. THIS PLAT IS BASED ON THE RECORDS OF THE SURVEYING DIVISION OF THE DEPARTMENT OF REVENUE, WHICH ARE THE OFFICIAL RECORDS OF THE SURVEYING DIVISION OF THE DEPARTMENT OF REVENUE, STATE OF NEBRASKA.
4. THIS PLAT IS BASED ON THE RECORDS OF THE SURVEYING DIVISION OF THE DEPARTMENT OF REVENUE, WHICH ARE THE OFFICIAL RECORDS OF THE SURVEYING DIVISION OF THE DEPARTMENT OF REVENUE, STATE OF NEBRASKA.

WITNESSES MY HAND AND SEAL THIS 22nd DAY OF MARCH, 2006.
Scott A. Bauer
Registered Land Surveyor Number 000000000



- LEGEND
- FOUND MONUMENT
 - SET MONUMENT
 - COMPUTED POINT
 - ▲ MONUMENT CORNER OR PROPERTY CORNER
 - ▲ SEE SHEET 1 OF 2
 - ▲ MONUMENT CORNER OR PROPERTY CORNER
 - ▲ SEE SHEET 1 OF 2
 - ▲ SEE SHEET 2 OF 2
 - ▲ SEE SHEET 3 OF 3
 - ▲ SEE SHEET 4 OF 4



AMENDED FINAL PLAT
A Plat of Lots 14
SCENIC KNOLLIS SUBDIVISION,
SCOTTS BLUFF COUNTY, NEBRASKA
SITUATED IN THE SOUTHEAST QUARTER OF SECTION 9, AND THE
NORTHEAST QUARTER OF SECTION 16, TOWNSHIP 22 NORTH,
RANGE 56 WEST OF THE 6TH PRINCIPAL MERIDIAN, SCOTTS BLUFF
COUNTY, NEBRASKA.

OWNER'S STATEMENT:
We, the undersigned, being the owners of the real estate described in the foregoing "Legal Description," and shown in the accompanying plat, have caused said real estate to be platted as FINAL PLAT OF LOTS 1-21, SCENIC KNOLLIS SUBDIVISION, SCOTTS BLUFF COUNTY, NEBRASKA.
The foregoing Plat is made with my free consent and in accordance with the scheme of the undersigned Owners.

By: *[Signature]* Date: 6/5/06
Supervisor

ACKNOWLEDGMENT:
STATE OF NEBRASKA }
COUNTY OF SCOTTS BLUFF }
I, Clerk of County Records, do hereby certify that the foregoing plat of SCENIC KNOLLIS SUBDIVISION, SCOTTS BLUFF COUNTY, NEBRASKA, was duly filed for record in my office on the 5th day of June, 2006, and that the same is a correct and true copy of the original as shown to me by the undersigned. Witness my hand and official seal at the City of Scotts Bluff, Nebraska, this 5th day of June, 2006.

By: *[Signature]*
Commissioner
APPROVAL AND ACCEPTANCE
The foregoing plat of LOTS 1 THROUGH 21, SCENIC KNOLLIS SUBDIVISION, SCOTTS BLUFF COUNTY, NEBRASKA, is hereby approved by the Board of Commissioners of Scotts Bluff County, Nebraska, and the undersigned Clerk of County Records, on this 5th day of June, 2006. A true and correct copy of this plat is hereby certified to be a true and correct copy of the original as shown to me by the undersigned. Witness my hand and official seal at the City of Scotts Bluff, Nebraska, this 5th day of June, 2006.

[Signature]
Commissioner of Scotts Bluff County
[Signature]
Attest: *[Signature]*
County Clerk



Prepared by:
Baker
Associates

LEGAL DESCRIPTIONS
A TRACT OF LAND SITUATED IN THE WEST HALF OF THE EAST HALF OF SECTION 9, TOWNSHIP 22 NORTH, RANGE 56 WEST OF THE 6TH PRINCIPAL MERIDIAN, NEBRASKA, MORE PARTICULARLY DESCRIBED AS FOLLOWS:
TRACT 1 - BEGINNING AT THE SOUTH CORNER OF SECTION 9, THENCE NORTHWEST, ON THE CORNER WITH THE SOUTHWEST CORNER OF SECTION 9, THENCE SOUTHWEST ALONG THE EAST LINE OF SECTION 9, A DISTANCE OF 114.24 FEET, THENCE A DISTANCE OF 114.24 FEET TO THE POINT OF BEGINNING, CONTAINING AN AREA OF 0.24 ACRES, MORE OR LESS.
TRACT 2 - BEGINNING AT THE SOUTH CORNER OF SECTION 9, THENCE NORTHWEST, ON THE CORNER WITH THE SOUTHWEST CORNER OF SECTION 9, THENCE SOUTHWEST ALONG THE EAST LINE OF SECTION 9, A DISTANCE OF 114.24 FEET, THENCE A DISTANCE OF 114.24 FEET TO THE POINT OF BEGINNING, CONTAINING AN AREA OF 0.24 ACRES, MORE OR LESS.
TRACT 3 - BEGINNING AT THE SOUTHWEST CORNER OF SECTION 9, THENCE NORTHWEST ALONG THE EAST LINE OF SECTION 9, A DISTANCE OF 114.24 FEET, THENCE A DISTANCE OF 114.24 FEET TO THE POINT OF BEGINNING, CONTAINING AN AREA OF 0.24 ACRES, MORE OR LESS.
TRACT 4 - BEGINNING AT THE SOUTHWEST CORNER OF SECTION 9, THENCE NORTHWEST ALONG THE EAST LINE OF SECTION 9, A DISTANCE OF 114.24 FEET, THENCE A DISTANCE OF 114.24 FEET TO THE POINT OF BEGINNING, CONTAINING AN AREA OF 0.24 ACRES, MORE OR LESS.
TRACT 5 - BEGINNING AT THE SOUTHWEST CORNER OF SECTION 9, THENCE NORTHWEST ALONG THE EAST LINE OF SECTION 9, A DISTANCE OF 114.24 FEET, THENCE A DISTANCE OF 114.24 FEET TO THE POINT OF BEGINNING, CONTAINING AN AREA OF 0.24 ACRES, MORE OR LESS.
TRACT 6 - BEGINNING AT THE SOUTHWEST CORNER OF SECTION 9, THENCE NORTHWEST ALONG THE EAST LINE OF SECTION 9, A DISTANCE OF 114.24 FEET, THENCE A DISTANCE OF 114.24 FEET TO THE POINT OF BEGINNING, CONTAINING AN AREA OF 0.24 ACRES, MORE OR LESS.
TRACT 7 - BEGINNING AT THE SOUTHWEST CORNER OF SECTION 9, THENCE NORTHWEST ALONG THE EAST LINE OF SECTION 9, A DISTANCE OF 114.24 FEET, THENCE A DISTANCE OF 114.24 FEET TO THE POINT OF BEGINNING, CONTAINING AN AREA OF 0.24 ACRES, MORE OR LESS.
TRACT 8 - BEGINNING AT THE SOUTHWEST CORNER OF SECTION 9, THENCE NORTHWEST ALONG THE EAST LINE OF SECTION 9, A DISTANCE OF 114.24 FEET, THENCE A DISTANCE OF 114.24 FEET TO THE POINT OF BEGINNING, CONTAINING AN AREA OF 0.24 ACRES, MORE OR LESS.
TRACT 9 - BEGINNING AT THE SOUTHWEST CORNER OF SECTION 9, THENCE NORTHWEST ALONG THE EAST LINE OF SECTION 9, A DISTANCE OF 114.24 FEET, THENCE A DISTANCE OF 114.24 FEET TO THE POINT OF BEGINNING, CONTAINING AN AREA OF 0.24 ACRES, MORE OR LESS.
TRACT 10 - BEGINNING AT THE SOUTHWEST CORNER OF SECTION 9, THENCE NORTHWEST ALONG THE EAST LINE OF SECTION 9, A DISTANCE OF 114.24 FEET, THENCE A DISTANCE OF 114.24 FEET TO THE POINT OF BEGINNING, CONTAINING AN AREA OF 0.24 ACRES, MORE OR LESS.
TRACT 11 - BEGINNING AT THE SOUTHWEST CORNER OF SECTION 9, THENCE NORTHWEST ALONG THE EAST LINE OF SECTION 9, A DISTANCE OF 114.24 FEET, THENCE A DISTANCE OF 114.24 FEET TO THE POINT OF BEGINNING, CONTAINING AN AREA OF 0.24 ACRES, MORE OR LESS.
TRACT 12 - BEGINNING AT THE SOUTHWEST CORNER OF SECTION 9, THENCE NORTHWEST ALONG THE EAST LINE OF SECTION 9, A DISTANCE OF 114.24 FEET, THENCE A DISTANCE OF 114.24 FEET TO THE POINT OF BEGINNING, CONTAINING AN AREA OF 0.24 ACRES, MORE OR LESS.
TRACT 13 - BEGINNING AT THE SOUTHWEST CORNER OF SECTION 9, THENCE NORTHWEST ALONG THE EAST LINE OF SECTION 9, A DISTANCE OF 114.24 FEET, THENCE A DISTANCE OF 114.24 FEET TO THE POINT OF BEGINNING, CONTAINING AN AREA OF 0.24 ACRES, MORE OR LESS.
TRACT 14 - BEGINNING AT THE SOUTHWEST CORNER OF SECTION 9, THENCE NORTHWEST ALONG THE EAST LINE OF SECTION 9, A DISTANCE OF 114.24 FEET, THENCE A DISTANCE OF 114.24 FEET TO THE POINT OF BEGINNING, CONTAINING AN AREA OF 0.24 ACRES, MORE OR LESS.
TRACT 15 - BEGINNING AT THE SOUTHWEST CORNER OF SECTION 9, THENCE NORTHWEST ALONG THE EAST LINE OF SECTION 9, A DISTANCE OF 114.24 FEET, THENCE A DISTANCE OF 114.24 FEET TO THE POINT OF BEGINNING, CONTAINING AN AREA OF 0.24 ACRES, MORE OR LESS.
TRACT 16 - BEGINNING AT THE SOUTHWEST CORNER OF SECTION 9, THENCE NORTHWEST ALONG THE EAST LINE OF SECTION 9, A DISTANCE OF 114.24 FEET, THENCE A DISTANCE OF 114.24 FEET TO THE POINT OF BEGINNING, CONTAINING AN AREA OF 0.24 ACRES, MORE OR LESS.
TRACT 17 - BEGINNING AT THE SOUTHWEST CORNER OF SECTION 9, THENCE NORTHWEST ALONG THE EAST LINE OF SECTION 9, A DISTANCE OF 114.24 FEET, THENCE A DISTANCE OF 114.24 FEET TO THE POINT OF BEGINNING, CONTAINING AN AREA OF 0.24 ACRES, MORE OR LESS.
TRACT 18 - BEGINNING AT THE SOUTHWEST CORNER OF SECTION 9, THENCE NORTHWEST ALONG THE EAST LINE OF SECTION 9, A DISTANCE OF 114.24 FEET, THENCE A DISTANCE OF 114.24 FEET TO THE POINT OF BEGINNING, CONTAINING AN AREA OF 0.24 ACRES, MORE OR LESS.
TRACT 19 - BEGINNING AT THE SOUTHWEST CORNER OF SECTION 9, THENCE NORTHWEST ALONG THE EAST LINE OF SECTION 9, A DISTANCE OF 114.24 FEET, THENCE A DISTANCE OF 114.24 FEET TO THE POINT OF BEGINNING, CONTAINING AN AREA OF 0.24 ACRES, MORE OR LESS.
TRACT 20 - BEGINNING AT THE SOUTHWEST CORNER OF SECTION 9, THENCE NORTHWEST ALONG THE EAST LINE OF SECTION 9, A DISTANCE OF 114.24 FEET, THENCE A DISTANCE OF 114.24 FEET TO THE POINT OF BEGINNING, CONTAINING AN AREA OF 0.24 ACRES, MORE OR LESS.
TRACT 21 - BEGINNING AT THE SOUTHWEST CORNER OF SECTION 9, THENCE NORTHWEST ALONG THE EAST LINE OF SECTION 9, A DISTANCE OF 114.24 FEET, THENCE A DISTANCE OF 114.24 FEET TO THE POINT OF BEGINNING, CONTAINING AN AREA OF 0.24 ACRES, MORE OR LESS.

LOT NUMBER	SECTION	TOWNSHIP	RANGE	MERIDIAN	AREA
1	9	22	56	6TH	0.24
2	9	22	56	6TH	0.24
3	9	22	56	6TH	0.24
4	9	22	56	6TH	0.24
5	9	22	56	6TH	0.24
6	9	22	56	6TH	0.24
7	9	22	56	6TH	0.24
8	9	22	56	6TH	0.24
9	9	22	56	6TH	0.24
10	9	22	56	6TH	0.24
11	9	22	56	6TH	0.24
12	9	22	56	6TH	0.24
13	9	22	56	6TH	0.24
14	9	22	56	6TH	0.24
15	9	22	56	6TH	0.24
16	9	22	56	6TH	0.24
17	9	22	56	6TH	0.24
18	9	22	56	6TH	0.24
19	9	22	56	6TH	0.24
20	9	22	56	6TH	0.24
21	9	22	56	6TH	0.24

LOT NUMBER	SECTION	TOWNSHIP	RANGE	MERIDIAN	AREA
1	9	22	56	6TH	0.24
2	9	22	56	6TH	0.24
3	9	22	56	6TH	0.24
4	9	22	56	6TH	0.24
5	9	22	56	6TH	0.24
6	9	22	56	6TH	0.24
7	9	22	56	6TH	0.24
8	9	22	56	6TH	0.24
9	9	22	56	6TH	0.24
10	9	22	56	6TH	0.24
11	9	22	56	6TH	0.24
12	9	22	56	6TH	0.24
13	9	22	56	6TH	0.24
14	9	22	56	6TH	0.24
15	9	22	56	6TH	0.24
16	9	22	56	6TH	0.24
17	9	22	56	6TH	0.24
18	9	22	56	6TH	0.24
19	9	22	56	6TH	0.24
20	9	22	56	6TH	0.24
21	9	22	56	6TH	0.24