



2896-2787

FINAL PLAT

Lots 1-21

SCENIC KNOLLS SUBDIVISION, SCOTT'S BLUFF COUNTY, NEBRASKA

SITUATED IN THE EAST HALF OF SECTION 9, TOWNSHIP 23 NORTH, RANGE 56 WEST OF
THE 6TH PRINCIPAL MERIDIAN, SCOTT'S BLUFF COUNTY, NEBRASKA

| | |
|-------------|------|
| DATE MADE | 4 |
| BOOK NO. | 2787 |
| PAGE NO. | 1 |
| TOTAL PAGES | 1 |
| RECORD NO. | |
| INDEX | |

DATE MADE 7/9
 COUNTY SCOTT'S BLUFF
 RECORD NO. 2787
 INDEX

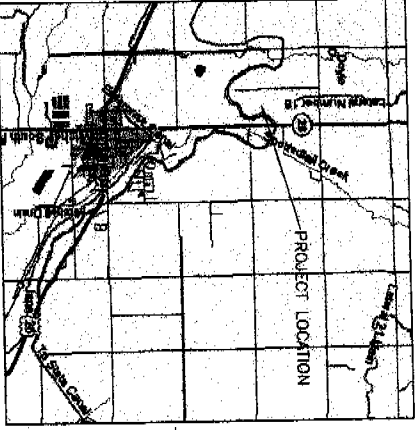
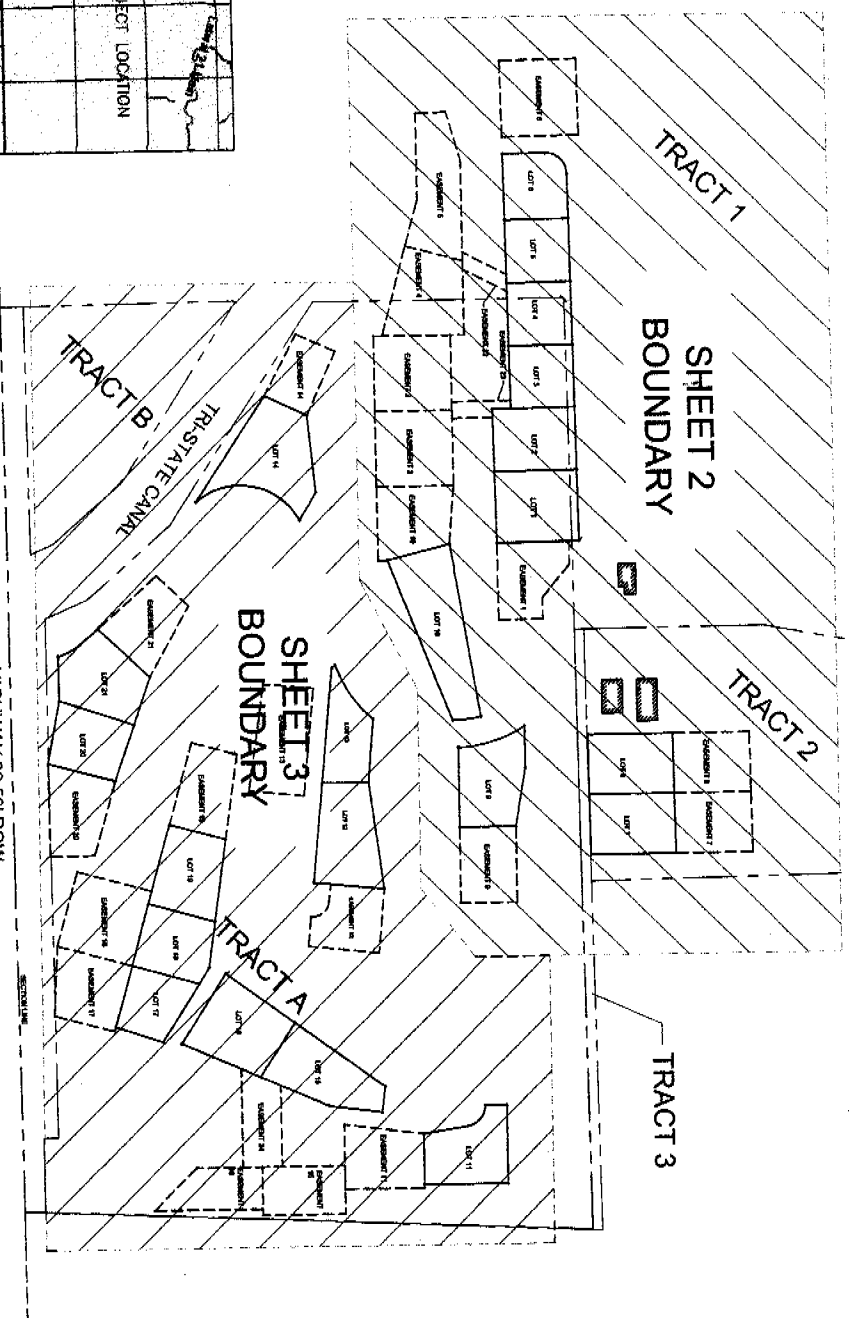
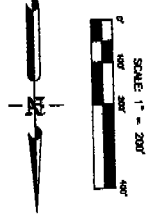
Inst 2006 - 2787

SHEET 1 OF 4

RECORDED
SCOTT'S BLUFF COUNTY, NE

DATE 5.1.06 TIME 10.15 AM

Jan A. Bauer
REGISTER OF DEEDS



OVERVIEW MAP

Prepared by:
Baker
 Associates

Prepared by:
Baker Associates Inc.

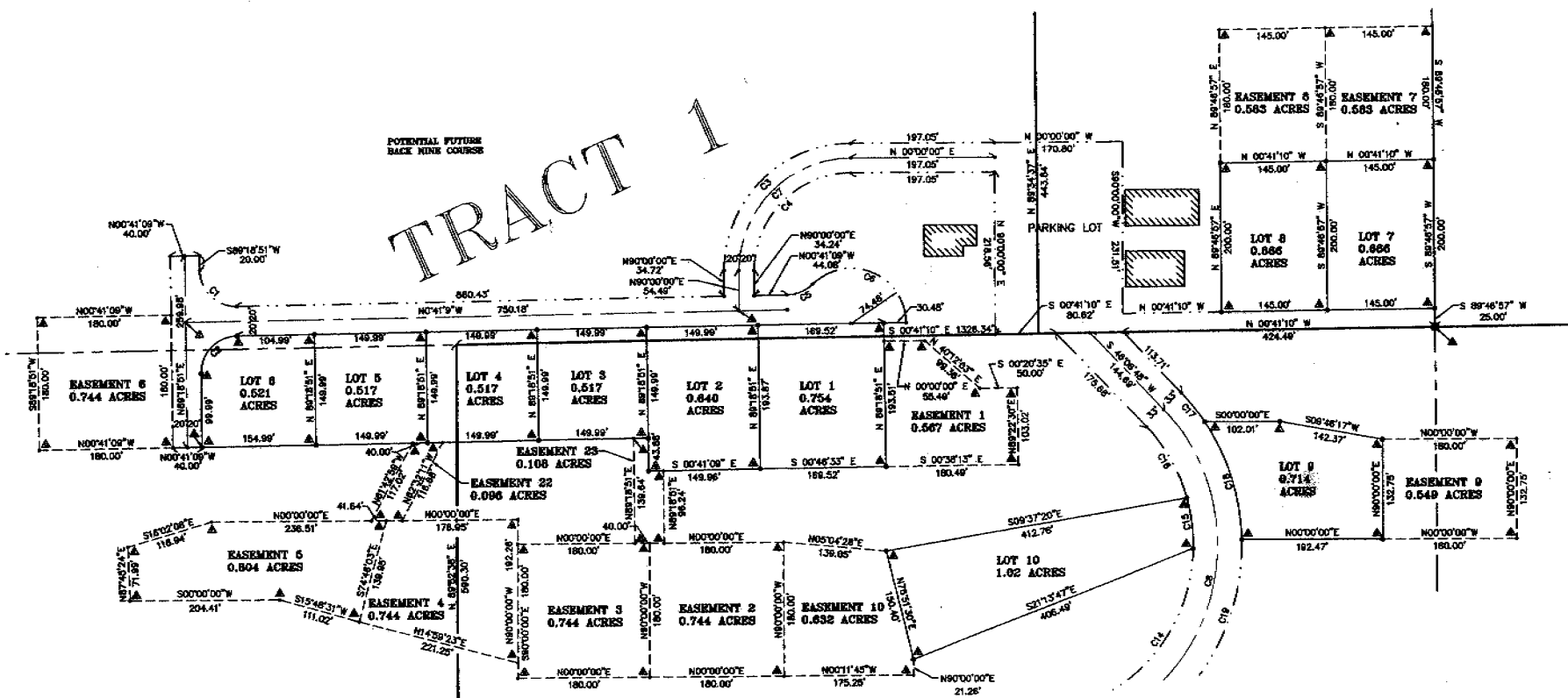
FINAL PLAT

Lots 1-21

**SCENIC KNOLLS SUBDIVISION,
SCOTTS BLUFF COUNTY, NEBRASKA**

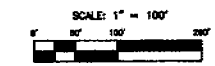
SITUATED IN THE EAST HALF OF SECTION 9, TOWNSHIP 23 NORTH, RANGE 56 WEST OF
THE 6TH PRINCIPAL MERIDIAN, SCOTTS BLUFF COUNTY, NEBRASKA

TRACT 1



SEE SHEET 3 TO NORTH AND EAST

SEE SHEET 3 TO NORTH AND EAST



- LEGEND**
- FOUND MONUMENT
 - SET MONUMENT
 - COMPUTED POSE
 - ▲ INDICATED COORDINATE OF PROPERTY CORNER (SEE SHEET 2 OF 2)
 - △ INDICATED COORDINATE OF CONTROL (SEE SHEET 2 OF 2)
 - INDICATED CURVE DATA LABEL (SEE SHEET 2 OF 2)
 - EASEMENT LINE
 - RIGHT OF WAY LINE

