



2006-166

NUM. INDEX 38  
COMPUTER 3  
PICTURED 3  
IMAGED 3

RECORDED  
SCOTTS BLUFF COUNTY, NE

NUM PAGES 2  
DOC TAX 14.50 PD CHG RET RET  
FEES 14.50 PD CHG RET RET  
TOTAL Rosie - City of Gering  
REC'D Rosie - City of Gering  
RET

Date 1-11-06 Time 2:00pm

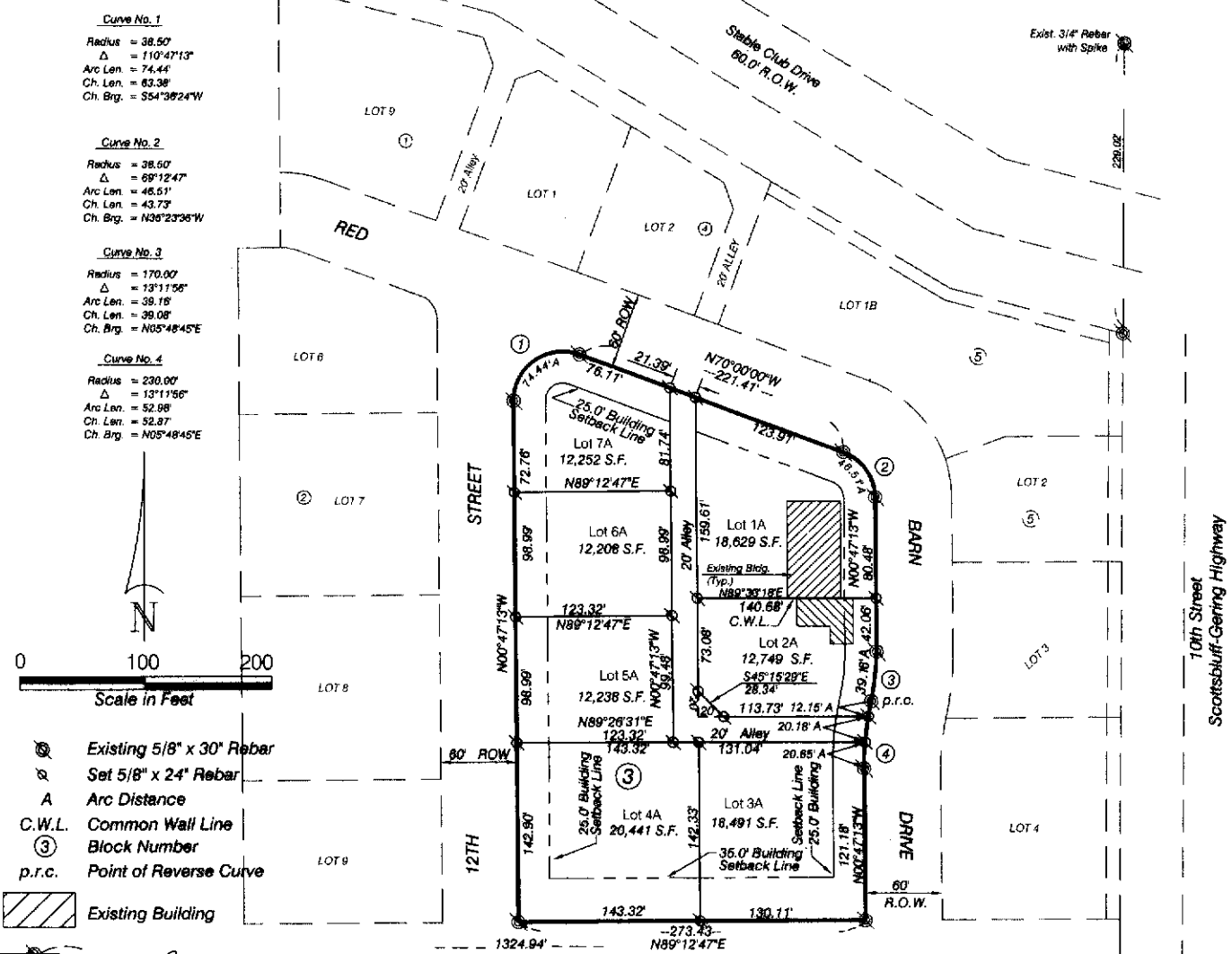
Inst. 2006 - 166  
Jean A. Bauer

REGISTER OF DEEDS

# LOTS 1A THROUGH 7A, BLOCK 3, RED BARN SUBDIVISION

TO THE CITY OF GERING, SCOTTS BLUFF COUNTY, NEBRASKA, A REPLAT OF LOTS 1 AND 2, BLOCK 3,  
RED BARN SUBDIVISION TO THE CITY OF GERING, NEBRASKA

SITUATED IN THE NORTHWEST QUARTER OF THE NORTHEAST QUARTER OF SECTION 35,  
TOWNSHIP 22 NORTH, RANGE 55 WEST OF THE 6TH P. M., SCOTTS BLUFF COUNTY, NEBRASKA.



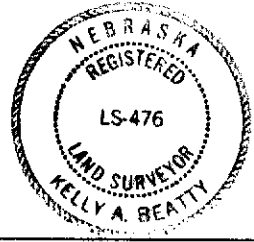
## SURVEYOR'S CERTIFICATE

I, Kelly A. Beatty, a Nebraska Registered Land Surveyor, hereby certify that I have surveyed and prepared a plat of LOTS 1A THROUGH 7A, BLOCK 3, RED BARN SUBDIVISION to the City of Gering, Scotts Bluff County, Nebraska, A Replat of Lots 1 and 2, Block 3, Red Barn Subdivision, situated in the Northwest Quarter of the Northeast Quarter of Section 35, Township 22 North, Range 55 West of the 6th P.M., Scotts Bluff County, Nebraska.

That the accompanying plat is a true delineation of such survey drawn to a scale of 100 feet to the inch. That all dimensions are in feet and decimals. That each lot and block has its own number and that the boundary of the plat is shown with a heavy solid line with dashed lines being for orientation purposes only. That all corners found or set are marked as shown.

WITNESS MY HAND AND SEAL THIS 11<sup>th</sup> DAY OF November, 20 05  
FOR THE FIRM OF M. C. SCHAFF AND ASSOCIATES, INC.

Kelly A. Beatty  
Kelly A. Beatty, Nebraska Registered Land Surveyor, L. S. 476



LOTS 1A THROUGH 7A, BLOCK 3  
RED BARN SUBDIVISION  
A REPLAT OF LOTS 1 AND 2, BLOCK 3,  
RED BARN SUBDIVISION  
CITY OF GERING, NEBRASKA  
SHEET 2 OF 2

**OWNER'S STATEMENT**

We, the undersigned, being the owners of Lots 1 and 2, Block 3, Red Barn Subdivision, to the City of Gering, Scotts Bluff County, Nebraska, situated in the Northwest Quarter of the Northeast Quarter of Section 35, Township 22 North, Range 55 West of the 6th P.M., Scotts Bluff County, Nebraska, as described in the foregoing 'Surveyor's Certificate' and shown on the accompanying plat have caused such real estate to be platted as LOTS 1A THROUGH 7A, BLOCK 3, RED BARN SUBDIVISION TO THE CITY OF GERING, SCOTTS BLUFF COUNTY, NEBRASKA, a Replat of Lots 1 and 2, Block 3, Red Barn Subdivision to the City of Gering, Scotts Bluff County, Nebraska, situated in the Northwest Quarter of the Northeast Quarter of Section 35, Township 22 North, Range 55 West of the 6th P.M., Scotts Bluff County, Nebraska.

That the foregoing plat is made with the free consent and in accordance with the desires of the undersigned owners. We hereby dedicate the alley right of way and utility and access easements shown on the plat to the use and benefit of the public.

Dated this 15 day of Nov, 2005.

Western Terminal Storage, Inc.,  
a Nebraska Corporation

Paul L. Reed  
Paul L. Reed, President

**ACKNOWLEDGEMENT**

STATE OF NEBRASKA )  
COUNTY OF SCOTTS BLUFF )

Before me, a Notary Public, qualified and acting in said County, personally came Paul L. Reed, President, Western Terminal Storage, Inc., a Nebraska Corporation, to me known to be the identical person whose signature is affixed to the foregoing 'Owner's Statement' and acknowledged the execution thereof to be his voluntary act and deed and the voluntary act and deed of Western Terminal Storage, Inc.

WITNESS MY HAND AND SEAL THIS 15 DAY OF NOV, 2005.

Betty Bookman  
Notary Public

My Commission Expires 3-28-07

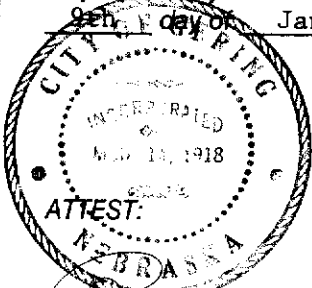


**APPROVAL AND ACCEPTANCE**

The foregoing plat of LOTS A1 THROUGH 7A, BLOCK 3, RED BARN SUBDIVISION TO THE CITY OF GERING, SCOTTS BLUFF COUNTY, NEBRASKA, a Replat of Lots 1 and 2, Block 3, Red Barn Subdivision to the City of Gering, Scotts Bluff County, Nebraska, situated in the Northwest Quarter of the Northeast Quarter of Section 35, Township 22 North, Range 55 West of the 6th P.M., Scotts Bluff County, Nebraska, is hereby approved by the Mayor and City Council of the City of Gering, Scotts Bluff County, Nebraska, by resolution duly passed this

9th day of January, 2006.

Lawrence C. Gibbs  
Council President



Shirley D. Russell  
City Clerk