

13A

NUM PAGES 2  
 DOC TAX \_\_\_\_\_ PD \_\_\_\_\_ CHG \_\_\_\_\_ RET \_\_\_\_\_  
 FEES 13.00 PD \_\_\_\_\_ CHG \_\_\_\_\_ RET \_\_\_\_\_  
 TOTAL \_\_\_\_\_  
 CK NUM \_\_\_\_\_ BY \_\_\_\_\_  
 REC'D Rick Wallace BY \_\_\_\_\_

NUM. INDEX B-1  
 COMPUTER E-1  
 PICTURED J  
 IMAGED J

RECORDED  
 SCOTTS BLUFF COUNTY, NE

Date 2-9-04 Time 3:00 P.M.

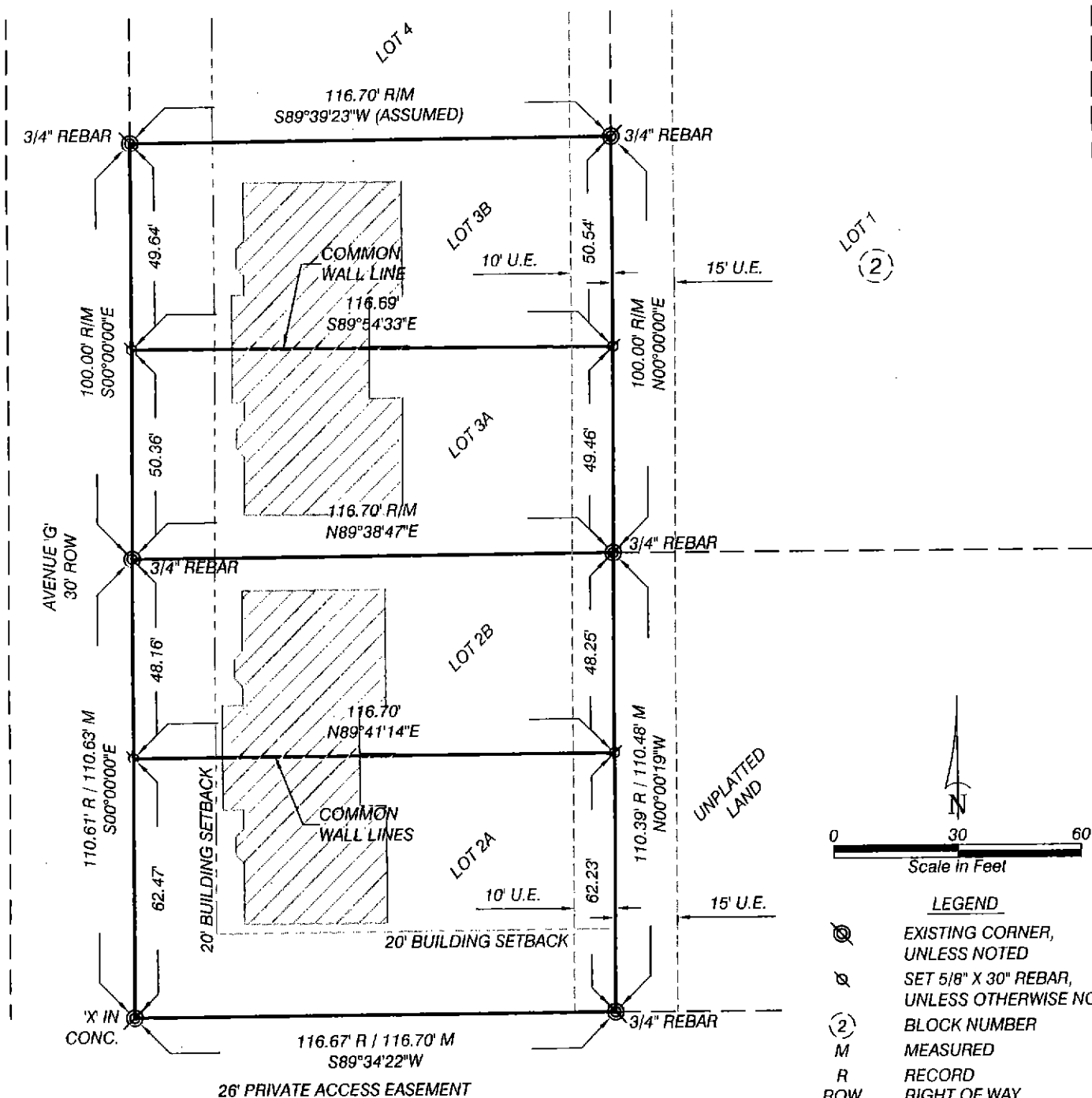
*Jean A. Bauer*

REGISTER OF DEEDS

**FINAL PLAT**

**LOTS 2A, 2B, 3A, AND 3B, BLOCK 2, VANDENBERGE ADDITION,**

A REPLAT OF LOTS 2 AND 3, BLOCK 2, VANDENBERGE ADDITION  
 TO THE CITY OF SCOTTSBLUFF, SCOTTS BLUFF COUNTY, NEBRASKA



**SURVEYOR'S CERTIFICATE**

I, Kelly A. Beatty, a Nebraska Registered Land Surveyor, hereby certify I have survey a prepared a plat of LOTS 2A, 2B, 3A, AND 3B, BLOCK 2, VANDENBERGE ADDITION, A REPLAT OF LOTS 2 AND 3, BLOCK 2, VANDENBERGE ADDITION TO THE CITY OF SCOTTSBLUFF, SCOTTS BLUFF COUNTY, NEBRASKA.

That the accompanying plat is a true delineation of said survey drawn to a scale of 30 feet to the inch. That all dimensions are in feet and decimals. That each lot and block has its own number. That the boundary of the plat is shown with a heavy solid line with dashed lines being for orientation purposes only. That all corners found or set are marked as shown.

WITNESS MY HAND AND SEAL this 20<sup>th</sup> day of November, 20 03  
 FOR THE FIRM OF M. C. SCHAFF AND ASSOCIATES, INC.

*Kelly A. Beatty*  
 Kelly A. Beatty, Nebraska Registered Land Surveyor, L. S. 476



LOTS 2A, 2B, 3A, AND 3B, BLOCK 2,  
VANDENBERGE ADDITION  
SCOTTSBLUFF, NEBRASKA  
SHEET 2 OF 2

OWNER'S STATEMENT

We, the undersigned being the owners of Lots 2 and 3, Block 2, Vandenberg Addition to the City of Scottsbluff, Scotts Bluff County, Nebraska, as described in the foregoing "Surveyor's Certificate" and shown on the accompanying plat have caused such real estate to be platted as LOTS 2A, 2B, 3A, AND 3B, BLOCK 2, VANDENBERGE ADDITION, A REPLAT OF LOTS 2 AND 3, BLOCK 2, VANDENBERGE ADDITION TO THE CITY OF SCOTTSBLUFF, SCOTTS BLUFF COUNTY, NEBRASKA.

That the foregoing plat is made with the free consent and in accordance with the desires of the undersigned owners. We hereby dedicate the easements shown on the plat for the use and benefit of the public.

DATED THIS 1 DAY OF December, 2003

Anderson Builders, Inc., a Nebraska Corporation

  
David L. Anderson, President


ACKNOWLEDGEMENT

STATE OF NEBRASKA )  
COUNTY OF SCOTTS BLUFF )

Before me, a Notary Public, qualified and acting in said county, personally came David L. Anderson, President of Anderson Builders, Inc., a Nebraska Corporation, to me known to be the identical person whose signature is affixed to the foregoing "Owner's Statement" and acknowledged the execution thereof to be his voluntary act and deed, and voluntary act and deed of the Corporation.

WITNESS MY NOTARIAL SEAL THIS 1<sup>st</sup> DAY OF December, 2003





  
Notary Public

My Commission Expires: \_\_\_\_\_

APPROVAL AND ACCEPTANCE

The foregoing plat of LOTS 2A, 2B, 3A, AND 3B, BLOCK 2, VANDENBERGE ADDITION, A REPLAT OF LOTS 2 AND 3, BLOCK 2, VANDENBERGE ADDITION TO THE CITY OF SCOTTSBLUFF, SCOTTS BLUFF COUNTY, NEBRASKA, is hereby approved and accepted by the Mayor and City Council of the City of Scottsbluff, Scotts Bluff County, Nebraska, by resolution dated this 20<sup>th</sup> day of January, 2004.

Attest:   
City Clerk  


  
Mayor