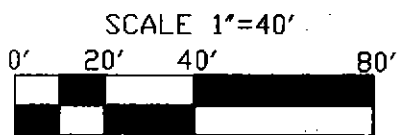
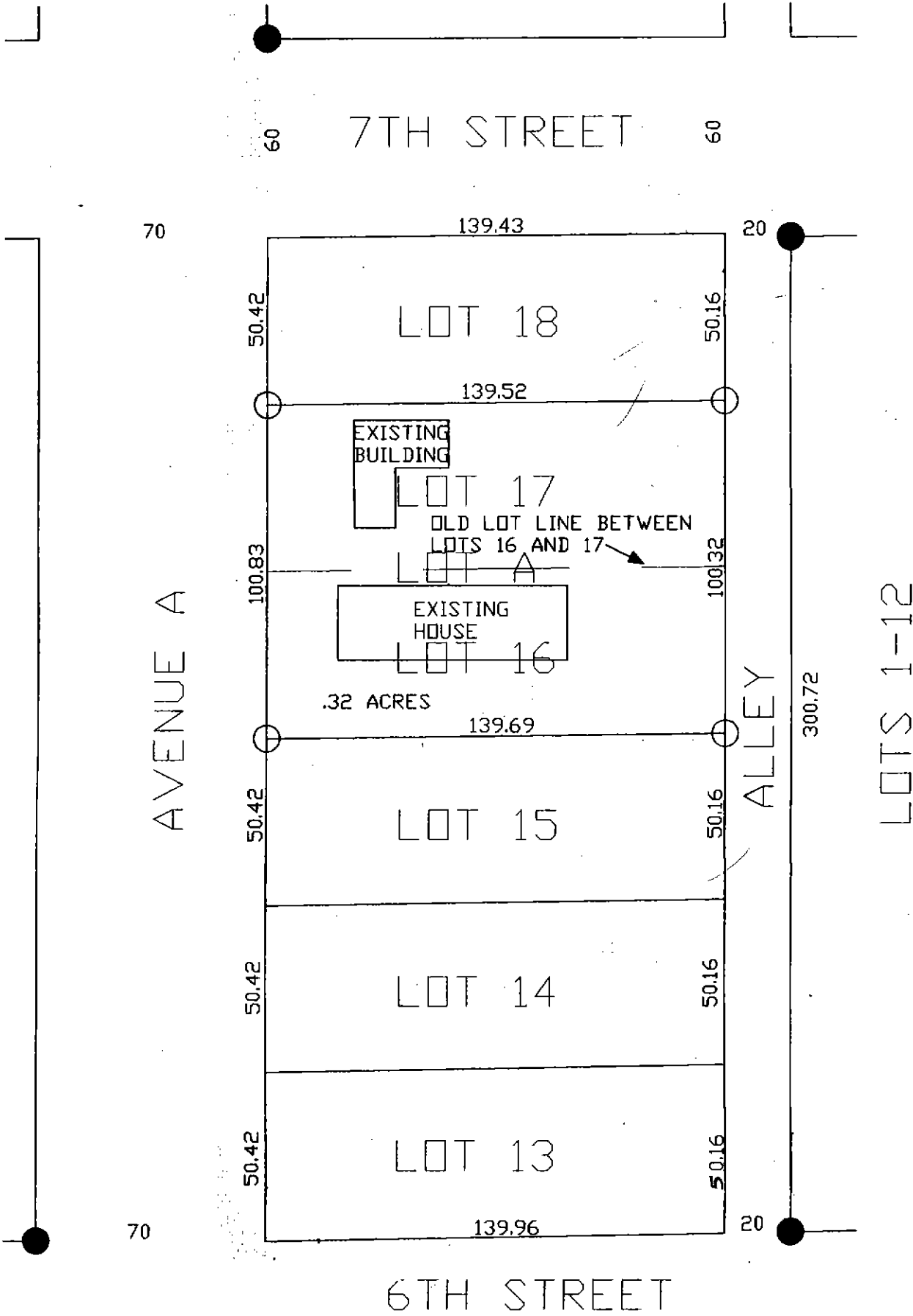


A REPLAT OF LOTS 16 AND 17, BLOCK 3,  
SECOND ADDITION TO THE CITY OF MINATURE,  
SCOTTS BLUFF COUNTY, NEBRASKA

**Inst 2004 - 04477**



- CORNERS FOUND  
5/8" REBAR
- CORNERS SET  
5/8"X24" REBAR



