

Mini

Inst. 2002 - 06497

NUM PAGES 2  
 DOC TAX \_\_\_\_\_ PD \_\_\_\_\_ CHG \_\_\_\_\_ RET \_\_\_\_\_  
 FEES 12.00 PD \_\_\_\_\_ CHG \_\_\_\_\_ RET \_\_\_\_\_  
 TOTAL \_\_\_\_\_  
 CK NUM Cash 12.00 BY \_\_\_\_\_  
 REC'D Jan Case BY \_\_\_\_\_

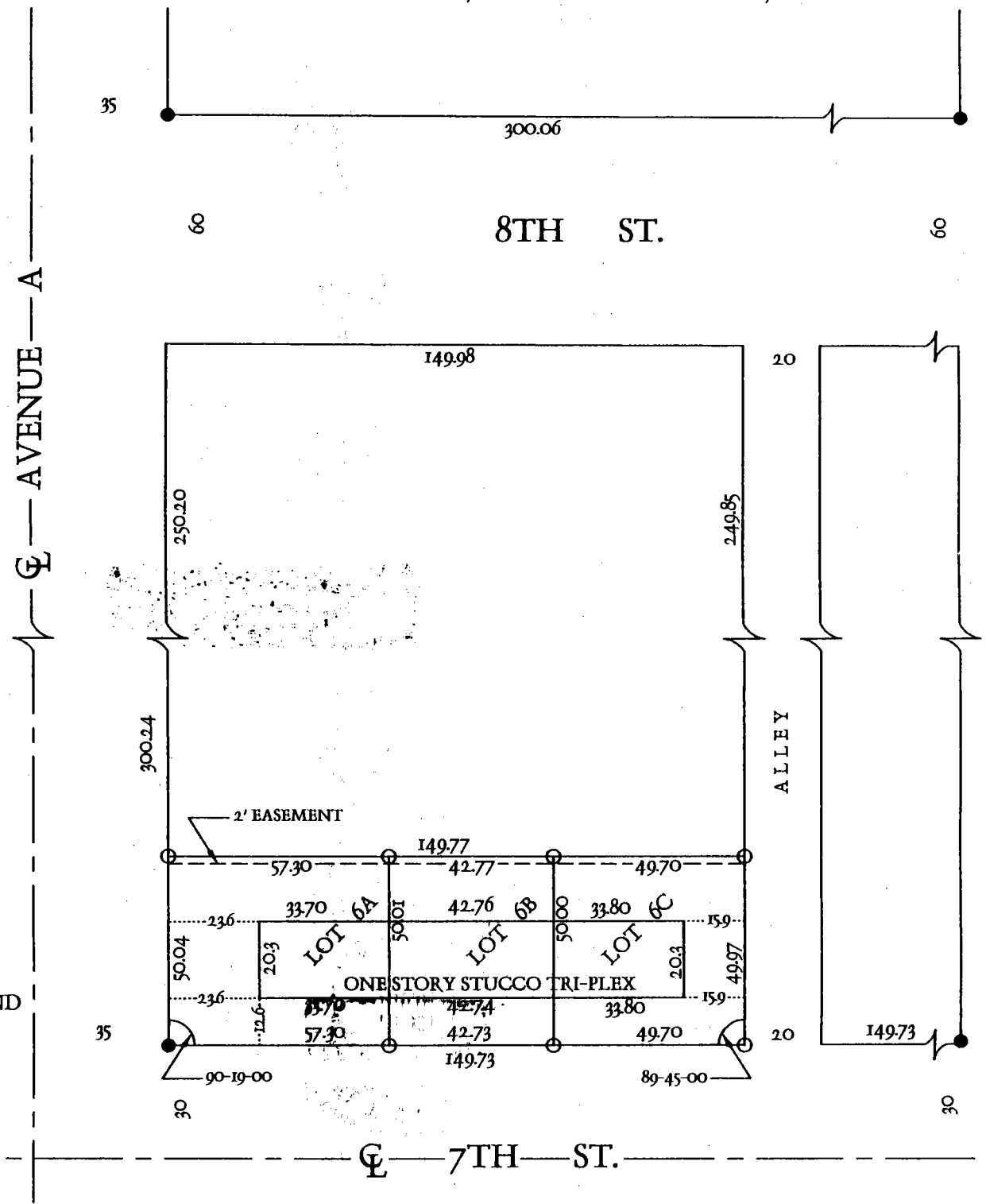
RECORDED  
 SCOTTS BLUFF COUNTY, NE  
 '02 AUG 20 AM 11 56

Jean A. Bauer

REGISTER OF DEEDS SHEET 1 OF 2

NUM INDEX B-3  
 COMPUTER G  
 RECORDED \_\_\_\_\_  
 IMAGED \_\_\_\_\_

REPLAT OF LOT 6, BLOCK 7, THIRD ADDITION TO EAST MINATARE,  
 SCOTTSBLUFF COUNTY, NEBRASKA,  
 TO BE KNOWN AS LOT 6A, 6B, 6C, BLOCK 7  
 TO EAST MINATARE, SCOTTSBLUFF COUNTY, NEBRASKA



SCALE: 1" = 40'  
 ● CORNERS FOUND  
 ○ CORNERS SET  
 1/2" x 24" REBAR

