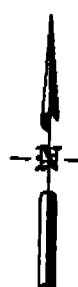
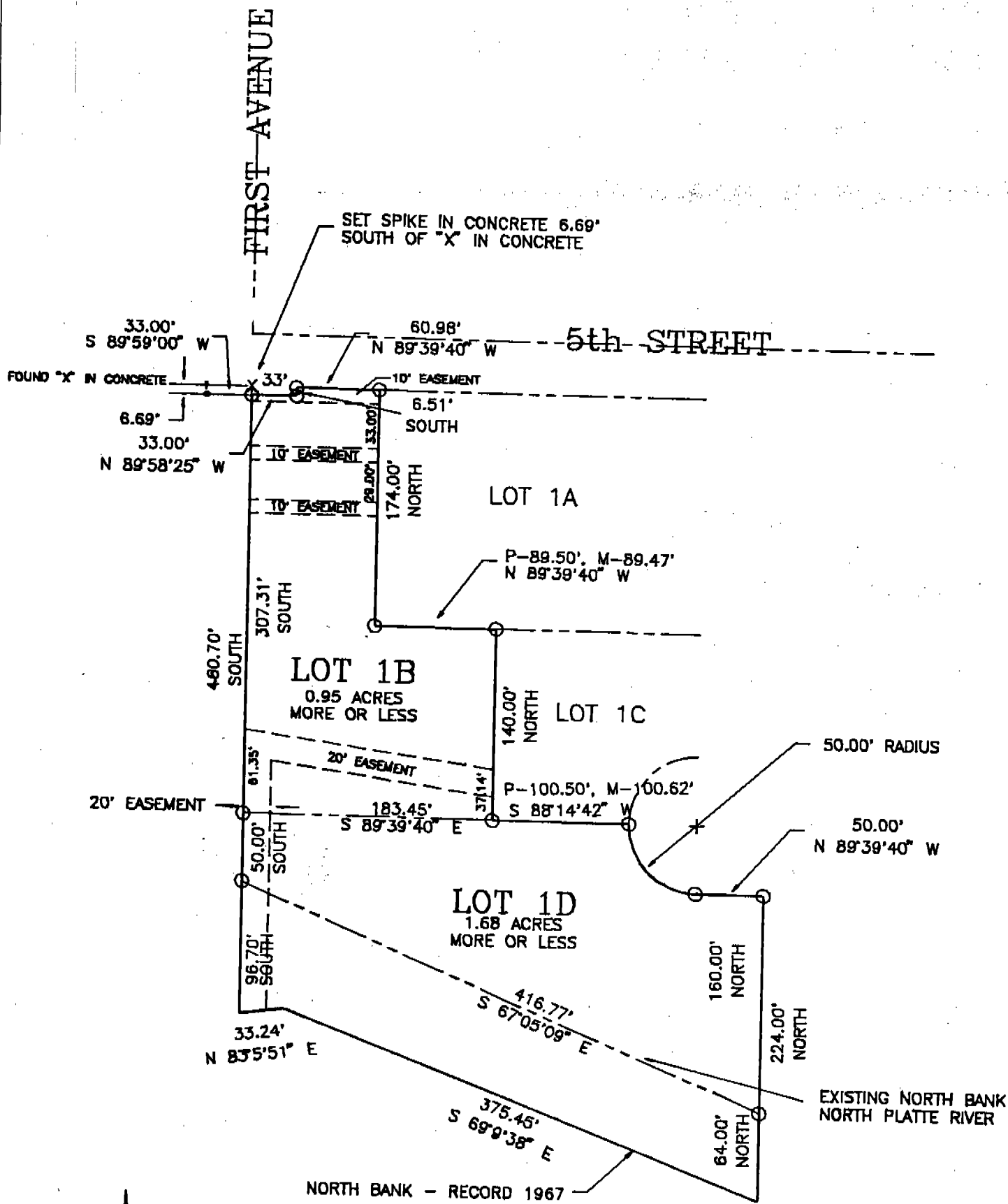
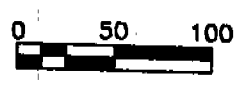


REPLAT OF LOTS 1B & 1D, SUBDIVISION OF LOT ONE (1),
 BLOCK ONE (1), READ'S ADDITION TO
 THE CITY OF SCOTTSBLUFF,
 SCOTTS BLUFF COUNTY, NEBRASKA



SCALE: 1" = 100'



- CORNER FOUND
- CORNER SET (3/4" x 30" rebar)

OWNER:
 Young Men's Christian Association
 of Scottsbluff, Nebraska
 22 S. Beltline Hwy E.
 Scottsbluff, Nebraska

prepared by
 Baker & Associates
 1915 First Avenue
 Scottsbluff, NE. 69361

SURVEYOR'S CERTIFICATE

I, Robert J. Zumbahlen, do hereby certify that I have surveyed the Replat of:

Lots 1B & 1D, Subdivision of Lot One (1), Block One (1), Read's Addition in the City of Scottsbluff, Scotts Bluff County, Nebraska.

That the accompanying plat represents a correct delineation of such survey drawn to a scale of 100 feet to the inch; that 5/8" x 30" rebar were set at all corners not shown as found corners; and that all dimensions are in feet and decimals of a foot.

WITNESS MY HAND AND SEAL this 7th day of September, 1988



Robert J. Zumbahlen
Robert J. Zumbahlen
Nebraska Registered Surveyor #331

OWNERS' STATEMENT

We, being the Owners of Lots 1B & 1D, Subdivision of Lot One (1), Block One (1), Read's Addition in the City of Scottsbluff, Scotts Bluff County, Nebraska as described in the foregoing "Surveyor's Certificate" and as shown by the accompanying plat have caused such real estate to be surveyed and replatted as Replat of Lots 1B & 1D, Subdivision of Lot One (1), Block One (1), Read's Addition in the City of Scottsbluff, Scotts Bluff County, Nebraska.

We hereby dedicate the streets and easements shown on and referred to in the plat to the use and benefit of the public.

The foregoing subdivision and plat is made with the free consent and in accordance with the desires of the corporation.

Date this 18 of Nov., 1988.

Young Men's Christian Association of Scottsbluff, Nebraska, Inc.

By: Greg Goerke President
Greg Goerke, President

Corporation Seal

Attested: Krisa Randall
Secretary

Note: Corporate Seal not affixed

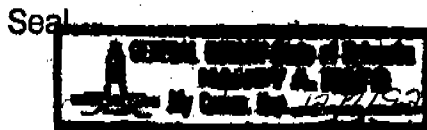
ACKNOWLEDGEMENT

State of Nebraska)
Scotts Bluff County)ss.

Before me, a Notary Public, qualified and acting in said County, personally came Greg Goerke, President of Young Men's Christian Association of Scottsbluff, Nebraska, Inc., known to me to be the identical person who signed the foregoing "Owners' Statement" and acknowledged the execution thereof to be their voluntary act and deed.

WITNESS MY HAND AND SEAL this 18 day of Nov., 1988.

By: Nancy A. Kays
Notary Public



My Commission Expires: 12/7/92

903

Sheet 4 of 4
Read's Addition

APPROVAL AND ACCEPTANCE

The foregoing Replat of Lots 1B & 1D, Subdivision of Lot One (1), Block One (1), Read's Addition in the City of Scottsbluff, Scotts Bluff County, Nebraska is approved and accepted by the Mayor and City Council of the City of Scottsbluff, Nebraska, by Resolution duly passed this 27th day of FEBRUARY, 1988.

By: Donald E. Overman
Donald E. Overman, Mayor

Attested: W.L. Ferguson
W.L. Ferguson, City Clerk



NUM B
GEN. KK
PICT. _____
COMPARED _____

State of Nebraska, Scotts Bluff County ss.
Entered in Numerical Index and filed for
record the 16 day of March, 1988
at 11:56 o'clock A.M., and recorded in
Book 189 of Deeds
on page 240
Mary Jo Ellis
Register of Deeds
By _____ Deputy