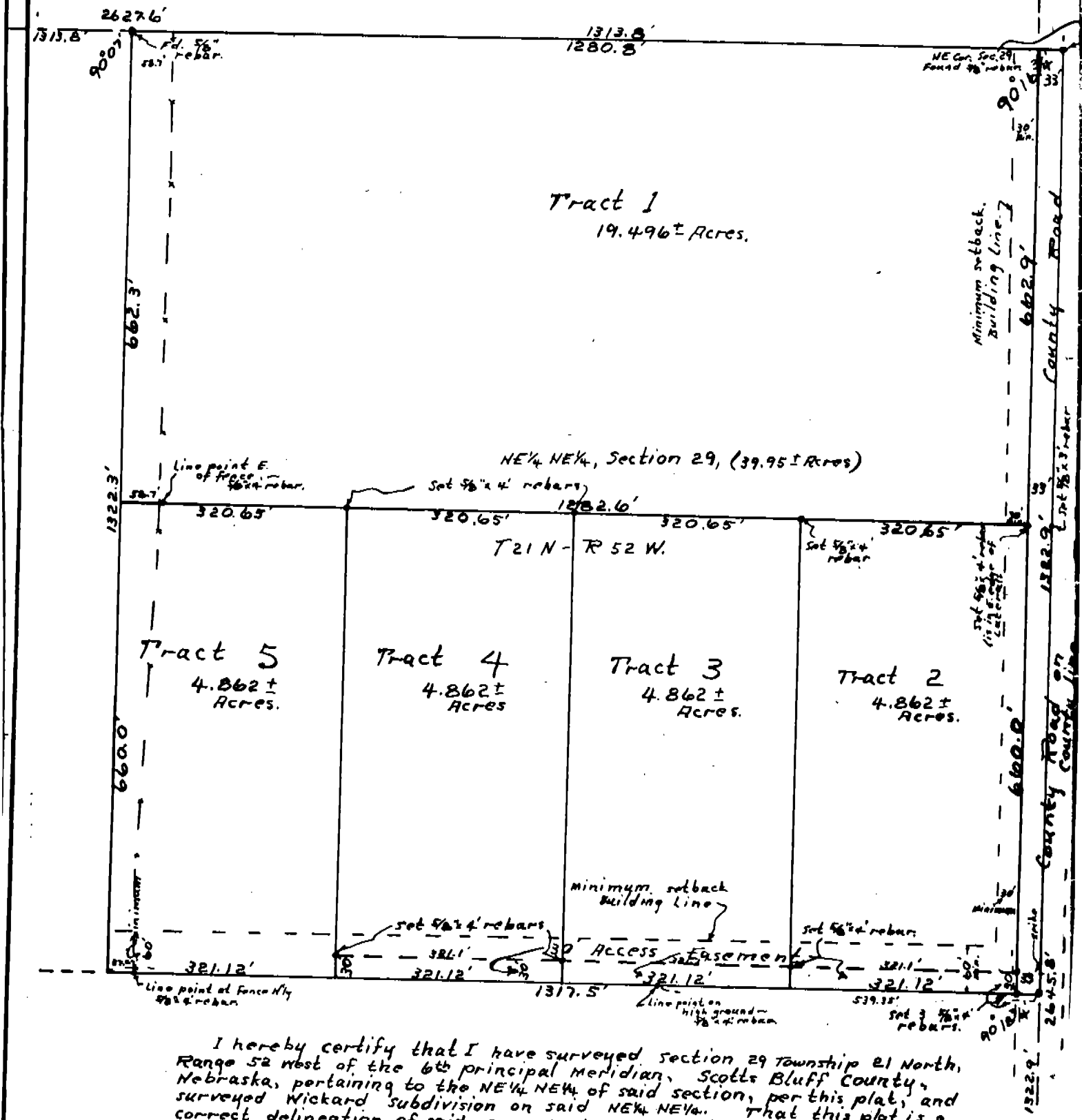


WICKARD SUBDIVISION



I hereby certify that I have surveyed section 29 Township 21 North, Range 52 west of the 6th principal meridian, Scotts Bluff County, Nebraska, pertaining to the NE 1/4 NE 1/4 of said section, per this plat, and surveyed Wickard subdivision on said NE 1/4 NE 1/4. That this plat is a correct delineation of said survey, drawn to the scale of 100 feet to the inch. Corner marks are 3/8\" x 4\" rebar or as noted. Measurements are in feet and decimals, and each tract bears its own number. WITNESS my hand this 1st day of October, 1981.

William E. [Signature]
 LS 16, Nebr.
 Bridgeport, Nebr.

