

NORTHWOOD ADDITION

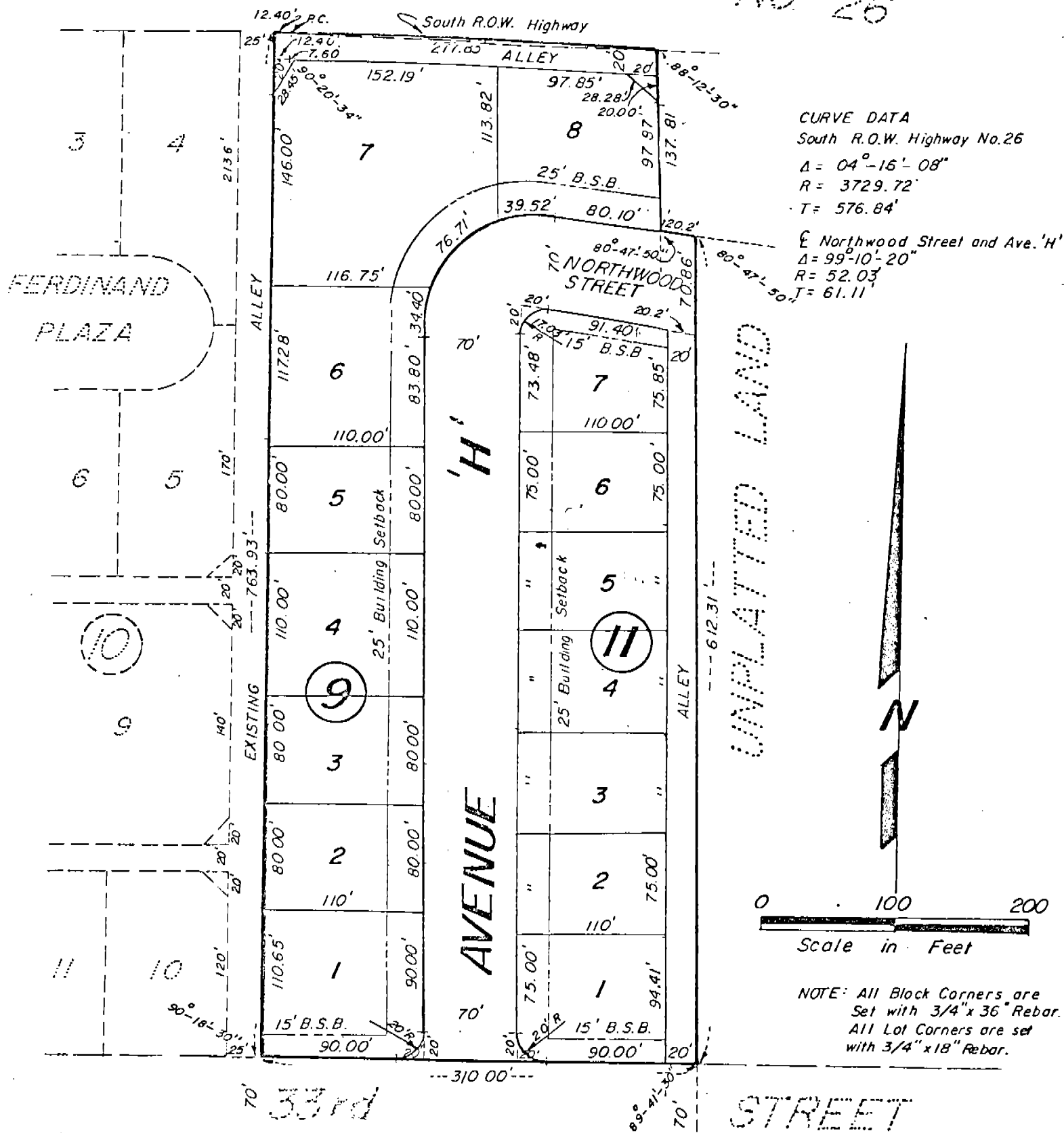
1614

An Addition in the City of Scottsbluff, Nebr.

(Containing part of Blocks 9 and 11, part of NORTHWOOD STREET; part of Avenue H; and two alleys)

U.S. HIGHWAY

NO. 26



NORTHWOOD

ADDITION

(2)

Note: See plat of East side of Block 9 - 10 - 11 - 12 - 13 - 14 - 15 - 16 - 17 - 18 - 19 - 20 - 21 - 22 - 23 - 24 - 25 - 26 - 27 - 28 - 29 - 30 - 31 - 32 - 33 - 34 - 35 - 36 - 37 - 38 - 39 - 40 - 41 - 42 - 43 - 44 - 45 - 46 - 47 - 48 - 49 - 50 - 51 - 52 - 53 - 54 - 55 - 56 - 57 - 58 - 59 - 60 - 61 - 62 - 63 - 64 - 65 - 66 - 67 - 68 - 69 - 70 - 71 - 72 - 73 - 74 - 75 - 76 - 77 - 78 - 79 - 80 - 81 - 82 - 83 - 84 - 85 - 86 - 87 - 88 - 89 - 90 - 91 - 92 - 93 - 94 - 95 - 96 - 97 - 98 - 99 - 100 - 101 - 102 - 103 - 104 - 105 - 106 - 107 - 108 - 109 - 110 - 111 - 112 - 113 - 114 - 115 - 116 - 117 - 118 - 119 - 120 - 121 - 122 - 123 - 124 - 125 - 126 - 127 - 128 - 129 - 130 - 131 - 132 - 133 - 134 - 135 - 136 - 137 - 138 - 139 - 140 - 141 - 142 - 143 - 144 - 145 - 146 - 147 - 148 - 149 - 150 - 151 - 152 - 153 - 154 - 155 - 156 - 157 - 158 - 159 - 160 - 161 - 162 - 163 - 164 - 165 - 166 - 167 - 168 - 169 - 170 - 171 - 172 - 173 - 174 - 175 - 176 - 177 - 178 - 179 - 180 - 181 - 182 - 183 - 184 - 185 - 186 - 187 - 188 - 189 - 190 - 191 - 192 - 193 - 194 - 195 - 196 - 197 - 198 - 199 - 200 - 201 - 202 - 203 - 204 - 205 - 206 - 207 - 208 - 209 - 210 - 211 - 212 - 213 - 214 - 215 - 216 - 217 - 218 - 219 - 220 - 221 - 222 - 223 - 224 - 225 - 226 - 227 - 228 - 229 - 230 - 231 - 232 - 233 - 234 - 235 - 236 - 237 - 238 - 239 - 240 - 241 - 242 - 243 - 244 - 245 - 246 - 247 - 248 - 249 - 250 - 251 - 252 - 253 - 254 - 255 - 256 - 257 - 258 - 259 - 260 - 261 - 262 - 263 - 264 - 265 - 266 - 267 - 268 - 269 - 270 - 271 - 272 - 273 - 274 - 275 - 276 - 277 - 278 - 279 - 280 - 281 - 282 - 283 - 284 - 285 - 286 - 287 - 288 - 289 - 290 - 291 - 292 - 293 - 294 - 295 - 296 - 297 - 298 - 299 - 300 - 301 - 302 - 303 - 304 - 305 - 306 - 307 - 308 - 309 - 310 - 311 - 312 - 313 - 314 - 315 - 316 - 317 - 318 - 319 - 320 - 321 - 322 - 323 - 324 - 325 - 326 - 327 - 328 - 329 - 330 - 331 - 332 - 333 - 334 - 335 - 336 - 337 - 338 - 339 - 340 - 341 - 342 - 343 - 344 - 345 - 346 - 347 - 348 - 349 - 350 - 351 - 352 - 353 - 354 - 355 - 356 - 357 - 358 - 359 - 360 - 361 - 362 - 363 - 364 - 365 - 366 - 367 - 368 - 369 - 370 - 371 - 372 - 373 - 374 - 375 - 376 - 377 - 378 - 379 - 380 - 381 - 382 - 383 - 384 - 385 - 386 - 387 - 388 - 389 - 390 - 391 - 392 - 393 - 394 - 395 - 396 - 397 - 398 - 399 - 400 - 401 - 402 - 403 - 404 - 405 - 406 - 407 - 408 - 409 - 410 - 411 - 412 - 413 - 414 - 415 - 416 - 417 - 418 - 419 - 420 - 421 - 422 - 423 - 424 - 425 - 426 - 427 - 428 - 429 - 430 - 431 - 432 - 433 - 434 - 435 - 436 - 437 - 438 - 439 - 440 - 441 - 442 - 443 - 444 - 445 - 446 - 447 - 448 - 449 - 450 - 451 - 452 - 453 - 454 - 455 - 456 - 457 - 458 - 459 - 460 - 461 - 462 - 463 - 464 - 465 - 466 - 467 - 468 - 469 - 470 - 471 - 472 - 473 - 474 - 475 - 476 - 477 - 478 - 479 - 480 - 481 - 482 - 483 - 484 - 485 - 486 - 487 - 488 - 489 - 490 - 491 - 492 - 493 - 494 - 495 - 496 - 497 - 498 - 499 - 500 - 501 - 502 - 503 - 504 - 505 - 506 - 507 - 508 - 509 - 510 - 511 - 512 - 513 - 514 - 515 - 516 - 517 - 518 - 519 - 520 - 521 - 522 - 523 - 524 - 525 - 526 - 527 - 528 - 529 - 530 - 531 - 532 - 533 - 534 - 535 - 536 - 537 - 538 - 539 - 540 - 541 - 542 - 543 - 544 - 545 - 546 - 547 - 548 - 549 - 550 - 551 - 552 - 553 - 554 - 555 - 556 - 557 - 558 - 559 - 560 - 561 - 562 - 563 - 564 - 565 - 566 - 567 - 568 - 569 - 570 - 571 - 572 - 573 - 574 - 575 - 576 - 577 - 578 - 579 - 580 - 581 - 582 - 583 - 584 - 585 - 586 - 587 - 588 - 589 - 590 - 591 - 592 - 593 - 594 - 595 - 596 - 597 - 598 - 599 - 600 - 601 - 602 - 603 - 604 - 605 - 606 - 607 - 608 - 609 - 610 - 611 - 612 - 613 - 614 - 615 - 616 - 617 - 618 - 619 - 620 - 621 - 622 - 623 - 624 - 625 - 626 - 627 - 628 - 629 - 630 - 631 - 632 - 633 - 634 - 635 - 636 - 637 - 638 - 639 - 640 - 641 - 642 - 643 - 644 - 645 - 646 - 647 - 648 - 649 - 650 - 651 - 652 - 653 - 654 - 655 - 656 - 657 - 658 - 659 - 660 - 661 - 662 - 663 - 664 - 665 - 666 - 667 - 668 - 669 - 670 - 671 - 672 - 673 - 674 - 675 - 676 - 677 - 678 - 679 - 680 - 681 - 682 - 683 - 684 - 685 - 686 - 687 - 688 - 689 - 690 - 691 - 692 - 693 - 694 - 695 - 696 - 697 - 698 - 699 - 700 - 701 - 702 - 703 - 704 - 705 - 706 - 707 - 708 - 709 - 710 - 711 - 712 - 713 - 714 - 715 - 716 - 717 - 718 - 719 - 720 - 721 - 722 - 723 - 724 - 725 - 726 - 727 - 728 - 729 - 730 - 731 - 732 - 733 - 734 - 735 - 736 - 737 - 738 - 739 - 740 - 741 - 742 - 743 - 744 - 745 - 746 - 747 - 748 - 749 - 750 - 751 - 752 - 753 - 754 - 755 - 756 - 757 - 758 - 759 - 760 - 761 - 762 - 763 - 764 - 765 - 766 - 767 - 768 - 769 - 770 - 771 - 772 - 773 - 774 - 775 - 776 - 777 - 778 - 779 - 780 - 781 - 782 - 783 - 784 - 785 - 786 - 787 - 788 - 789 - 790 - 791 - 792 - 793 - 794 - 795 - 796 - 797 - 798 - 799 - 800 - 801 - 802 - 803 - 804 - 805 - 806 - 807 - 808 - 809 - 810 - 811 - 812 - 813 - 814 - 815 - 816 - 817 - 818 - 819 - 820 - 821 - 822 - 823 - 824 - 825 - 826 - 827 - 828 - 829 - 830 - 831 - 832 - 833 - 834 - 835 - 836 - 837 - 838 - 839 - 840 - 841 - 842 - 843 - 844 - 845 - 846 - 847 - 848 - 849 - 850 - 851 - 852 - 853 - 854 - 855 - 856 - 857 - 858 - 859 - 860 - 861 - 862 - 863 - 864 - 865 - 866 - 867 - 868 - 869 - 870 - 871 - 872 - 873 - 874 - 875 - 876 - 877 - 878 - 879 - 880 - 881 - 882 - 883 - 884 - 885 - 886 - 887 - 888 - 889 - 890 - 891 - 892 - 893 - 894 - 895 - 896 - 897 - 898 - 899 - 900 - 901 - 902 - 903 - 904 - 905 - 906 - 907 - 908 - 909 - 910 - 911 - 912 - 913 - 914 - 915 - 916 - 917 - 918 - 919 - 920 - 921 - 922 - 923 - 924 - 925 - 926 - 927 - 928 - 929 - 930 - 931 - 932 - 933 - 934 - 935 - 936 - 937 - 938 - 939 - 940 - 941 - 942 - 943 - 944 - 945 - 946 - 947 - 948 - 949 - 950 - 951 - 952 - 953 - 954 - 955 - 956 - 957 - 958 - 959 - 960 - 961 - 962 - 963 - 964 - 965 - 966 - 967 - 968 - 969 - 970 - 971 - 972 - 973 - 974 - 975 - 976 - 977 - 978 - 979 - 980 - 981 - 982 - 983 - 984 - 985 - 986 - 987 - 988 - 989 - 990 - 991 - 992 - 993 - 994 - 995 - 996 - 997 - 998 - 999 - 1000

NORTHWOOD ADDITION
Containing part of Blocks 9 & 11,
part of NORTHWOOD STREET; part
of Avenue H; and two alleys
Scottsbluff, Nebraska

1614

Sheet 2 of 3

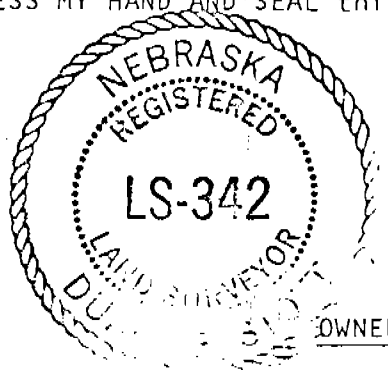
SURVEYOR'S CERTIFICATE

I, Duane E. Stott, a Nebraska Registered Land Surveyor, hereby certify that I have surveyed a part of the North Half of the Southwest Quarter of Section 14, Township 22 North, Range 55 West of the 6th P.M., in the City of Scottsbluff, Scotts Bluff County, Nebraska, the boundary of which is more particularly described as follows:

With reference to the Northeast corner of Lot 4, Block 10, Northwood Addition; thence, easterly on the North line of said Lot 4, extended East, a distance of 25.00 feet to the TRUE POINT OF BEGINNING, said point of beginning also being on the South Right-of-Way line of U.S. Highway #26; thence, easterly on said South Right-of-Way line, a distance of 12.40 feet to the Point of Curvature of a curve to the right, said curve having a radius of 3729.72 feet and a central angle of 04 degrees 16 minutes 08 seconds; thence, continuing easterly on the arc of said curve, a distance of 277.83 feet to the Point of Tangency of said curve; thence, a deflection angle right of 88 degrees 12 minutes 30 seconds from the long chord of the last described curve, a distance of 137.81 feet; thence, a deflection angle left of 80 degrees 47 minutes 50 seconds, a distance of 20.2 feet; thence, a deflection angle right of 80 degrees 47 minutes 50 seconds, parallel with the East line of Block 10, Northwood Addition, a distance of 612.31 feet to the point of intersection with the North Right-of-Way line of 33rd Street; thence, a deflection angle right of 89 degrees 41 minutes 30 seconds on said North Right-of-Way line, a distance of 310.00 feet; thence, a deflection angle right of 90 degrees 18 minutes 30 seconds on the East line of a previously dedicated alley, a distance of 763.93 feet to the point of beginning, containing an area of 5.33 acres more or less.

That I have prepared a plat of such tract of land to be known as Northwood Addition, containing parts of Blocks 9 and 11, Northwood Street, Avenue H and two alleys. That the Blocks, Street, Avenue and alleys are well and accurately staked off and marked. That the accompanying plat is a true delineation of such survey drawn to a scale of 100 feet to the inch. That all dimensions are in feet and decimals. That all Block corners are marked with 3/4" x 36" iron rods and all Lot corners are marked with 3/4" x 18" iron rods. That the boundary of the survey is shown on the plat with a heavy solid line.

WITNESS MY HAND AND SEAL this 15th day of April, 19 80.



FOR THE FIRM OF M.C. SCHAFF & ASSOCIATES, INC.

Duane E. Stott
Duane E. Stott, Nebraska Registered
Land Surveyor, L.S. 342

OWNER'S STATEMENT AND DEDICATION

I, the undersigned, being the Owner of that part of the North Half of the Southwest Quarter of Section 14, Township 22 North, Range 55 West of the 6th P.M., Scotts Bluff County, Nebraska, as described in the foregoing "Surveyor's Certificate" and shown in the accompanying plat, have caused such real estate to be surveyed and platted as NORTHWOOD ADDITION, containing parts of Blocks 9 and 11, Northwood Street, Avenue H and two alleys, an Addition in the City of Scottsbluff, Nebraska.

The foregoing subdivision of NORTHWOOD ADDITION, and the Avenue, Street, alleys and Building Setback designations shown on and referred to in the plat are made with the free consent and in accordance with the desires of the undersigned Owner. I hereby dedicate the Avenue, Street and Alleys shown on the plat to the use and benefit of the public.

DATED this 15th day of April, 19 80.



BERGGREN-KLEVEN COMPANY
A Nebraska Corporation

Robert E. Berggren
Robert E. Berggren, President

NORTHWOOD ADDITION
Containing part of Blocks 9 & 11,
part of NORTHWOOD STREET; part
of Avenue H; and two alleys
Scottsbluff, Nebraska

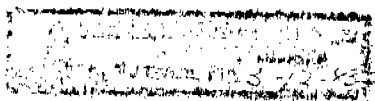
1614

ACKNOWLEDGEMENT

STATE OF NEBRASKA)
SCOTTS BLUFF COUNTY) ss

Before me, a Notary Public, qualified and acting in said County, personally came Robert E. Berggren, President of Berggren-Kleven Company, a Nebraska Corporation, to me known to be the identical person whose signature is affixed to the foregoing Dedication and Owner's Statement and acknowledged the execution thereof to be his voluntary act and deed and the voluntary act and deed of the corporation.

WITNESS MY HAND AND NOTARIAL SEAL this 1st of April, 1980.



Joann Harris
Notary Public

My Commission expires: March 12, 1993

APPROVAL AND ACCEPTANCE

The foregoing subdivision and plat of NORTHWOOD ADDITION hereby approved by the Mayor and City Council by resolution duly passed this 14th day of April, 1980.

Samuel E. Quisenberry
Mayor

ATTEST:

[Signature]
City Clerk

NUMERICAL
GENERAL
INDEXED



State of Nebraska, Scotts Bluff County ss.
Entered in Numerical Index and filed for
record the 17 day of April, 1980
at 2:15 o'clock P. M., and recorded in
Book 165 of Deeds
on page 16
Mary J. Lillis
Register of Deeds
By Deputy