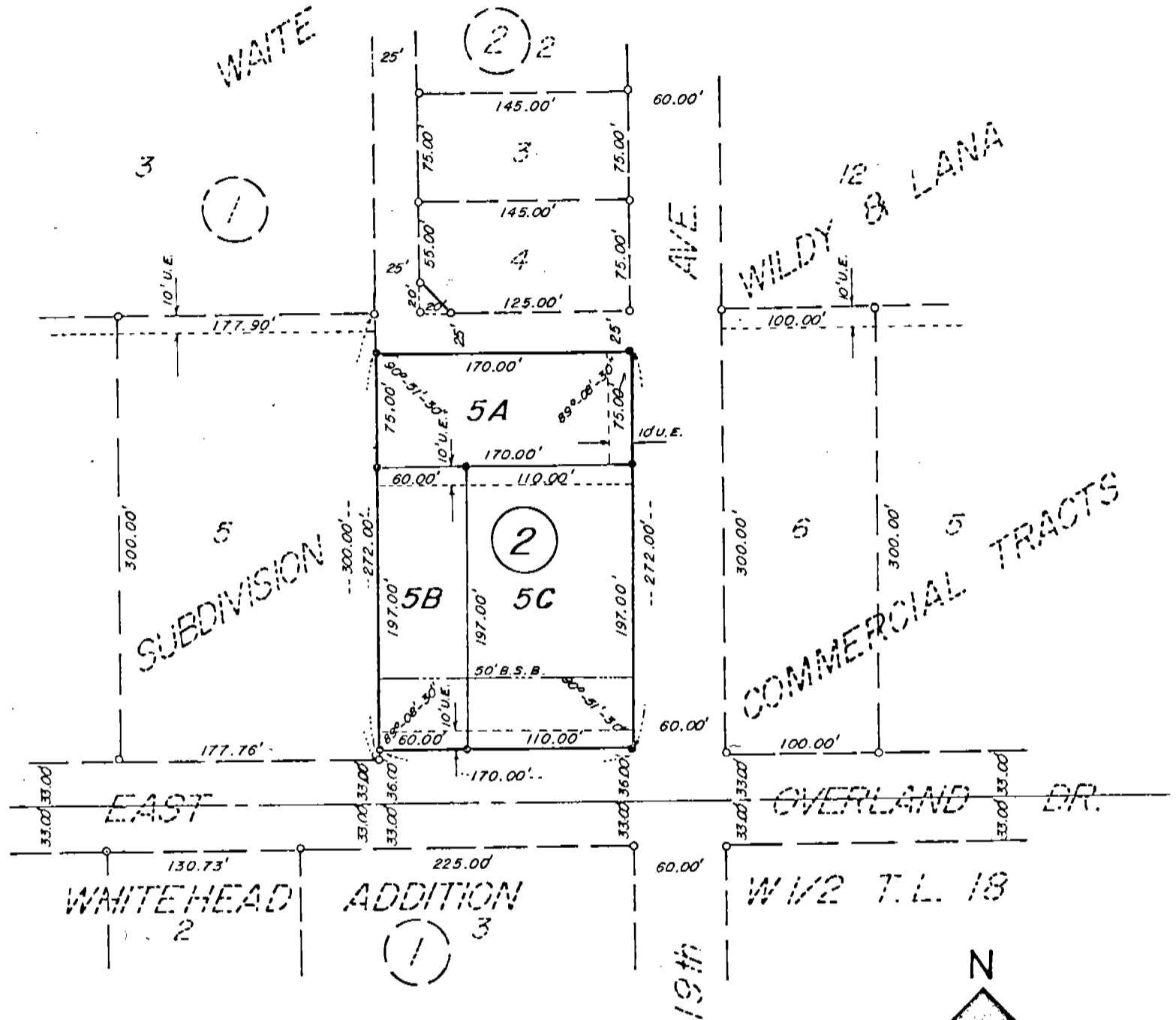


SUBDIVISION OF LOT 5, BLOCK 2, WAITE SUBDIVISION & REPLAT

1341 10

A Subdivision in the City of Scottsbluff, Nebraska.

NOTE: SEE Lot 5D, Block 1 (199-295)
REPLAT OF LOT 5, BLOCK 1, WAITE SUBDIVISION,
AND LOT 5B, BLOCK 2, SUBDIVISION OF
LOT 5, BLOCK 2, WAITE SUBDIVISION & REPLAT
A Subdivision in the City of
Scottsbluff, Nebraska



SURVEYOR'S CERTIFICATE

I, Duane E. Stott, a Nebraska Registered Land Surveyor, hereby certify that I have surveyed Lot 5, Block 2, Waite Subdivision and Replat, a subdivision in the City of Scottsbluff, Nebraska.

That I have prepared a plat of such survey to be known as Subdivision of Lot 5, Block 2, Waite Subdivision and Replat, containing Lots 5A, 5B and 5C. That the Lots are well and accurately staked off and marked.

That the accompanying plat is a true delineation of such survey drawn to a scale of 100 feet to the inch. That all dimensions are in feet and decimals. That all Lot corners are marked with 3/4" x 18" iron rods. That the boundary of the subdivision is shown on the plat with a heavy solid line.

WITNESS MY HAND AND SEAL this 17th day of March, 1980.

FOR THE FIRM OF M.C. SCHAFF & ASSOCIATES, INC.

Duane E. Stott

Duane E. Stott, Nebraska Registered
Land Surveyor, L.S. 342



0 100 200
Scale in Feet
1.06 Acres
Set 3/4" x 18" Rebar At
The Corners.

2/69

OWNER'S STATEMENT & DEDICATION

The undersigned, being the Owners of Block 2, WAITE SUBDIVISION AND REPLAT, as described in the foregoing "Surveyor's Certificate" and shown in the accompanying plat have caused such real estate to be surveyed and platted as SUBDIVISION OF LOT 5, BLOCK 2, WAITE SUBDIVISION AND REPLAT, a subdivision in the City of Scottsbluff, Nebraska.

The foregoing plat of SUBDIVISION OF LOT 5, BLOCK 2, WAITE SUBDIVISION AND REPLAT and the Easements and Building Setback Lines shown on and referred to in the Plat is made with the free consent and in accordance with the desires of the undersigned Owners. We hereby dedicate the Easements to the use and benefit of the public and stipulate that Lot 5B will only be used in conjunction with Lot 5, Block 1, Waite Subdivision.

DATED this 18th day of MARCH, 1980.

WAITE LUMBER COMPANY
A Corporation



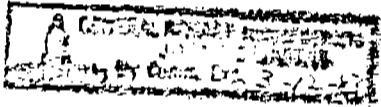
Donald J. Waite
Donald J. Waite, President

ACKNOWLEDGEMENT

STATE OF NEBRASKA)
SCOTTS BLUFF COUNTY) ss

Before me, a Notary Public, qualified and acting in said County, personally came Donald J. Waite, President of Waite Lumber Company, a Corporation, to me known to be the identical person whose name is affixed to the foregoing "Owner's Statement and Dedication" and acknowledged the execution thereof to be his voluntary act and deed and the voluntary act and deed of such Corporation

WITNESS MY HAND AND NOATARIAL SEAL this 18th day of March, 1980.



Joanne Harris
Notary Public

My Commission expires: 3-12-80

APPROVAL AND ACCEPTANCE

The foregoing Subdivision of Lot 5, Block 2, Waite Subdivision and Replat, hereby approved by the Mayor and City Council by resolution duly passed this 24th day of March, 1980.

Donald E. Quinn
Mayor

ATTEST:

H. L. Ferguson
City Clerk



State of Nebraska, Scotts Bluff County ss.
Entered in Numerical Index and filed for
record the 28 day of March, 1980
at 10:00 o'clock A. M., and recorded in
Book 164 of Deeds
on page 669
Mary L. Ellis
Register of Deeds
By Opal J. Clark Deputy