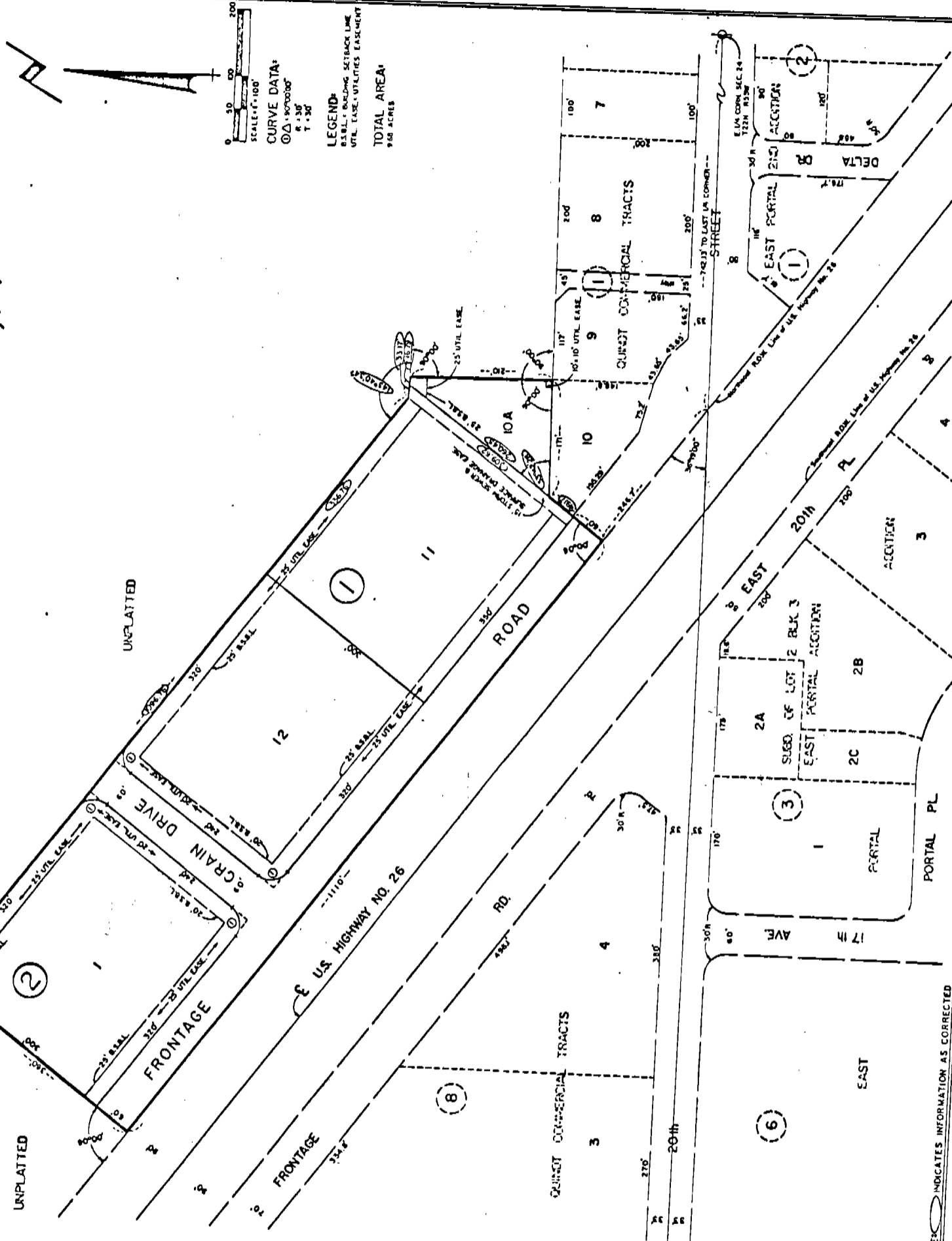


Note: See Ordinance No. 3212 vacating Tract 1, Block 2, Misc. 129-31

924

AMENDED PLAT OF QUIROT COMMERCIAL TRACTS, AN ADDITION TO THE CITY OF SCOTTSBUFF, NEBRASKA.



UNPLATTED

UNPLATTED

UNPLATTED

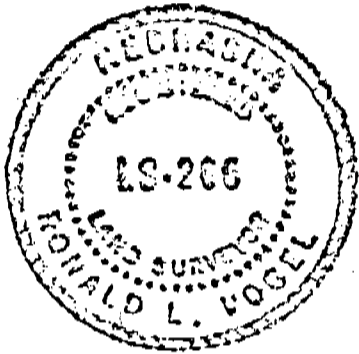
NOTES: INDICATES INFORMATION AS CORRECTED

SURVEYOR'S CERTIFICATE

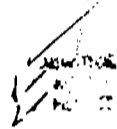
I, Ronald L. Vogel, a competent surveyor of Scotts Bluff County, Nebraska, hereby certify that I have surveyed Quintd Commercial Tracts, Lots 10A, 11 and 12, Block One (1) and Lot 1, Block Two (2), an Addition in the City of Scottsbluff, Nebraska.

That the accompanying amended plat has been prepared in order to correct certain discrepancies that exist on the original plat of Quintd Commercial Tracts and that where corrections are necessary, they are indicated as shown in the legend.

WITNESS MY HAND AND SEAL this 26th day of February, 1980.



Ronald L. Vogel
RONALD L. VOGEL
Nebraska Registered Land Surveyor
L.S. 266



State of Nebraska, Scotts Bluff County ss.
Entered in Numerical Index and filed for
record the *28* day of *February* 19*80*
at *4:15* o'clock *P.* M., and recorded in
Book *164* of *Deeds*
on page *511*
Mary J. Kallas
Register of Deeds
By Deputy