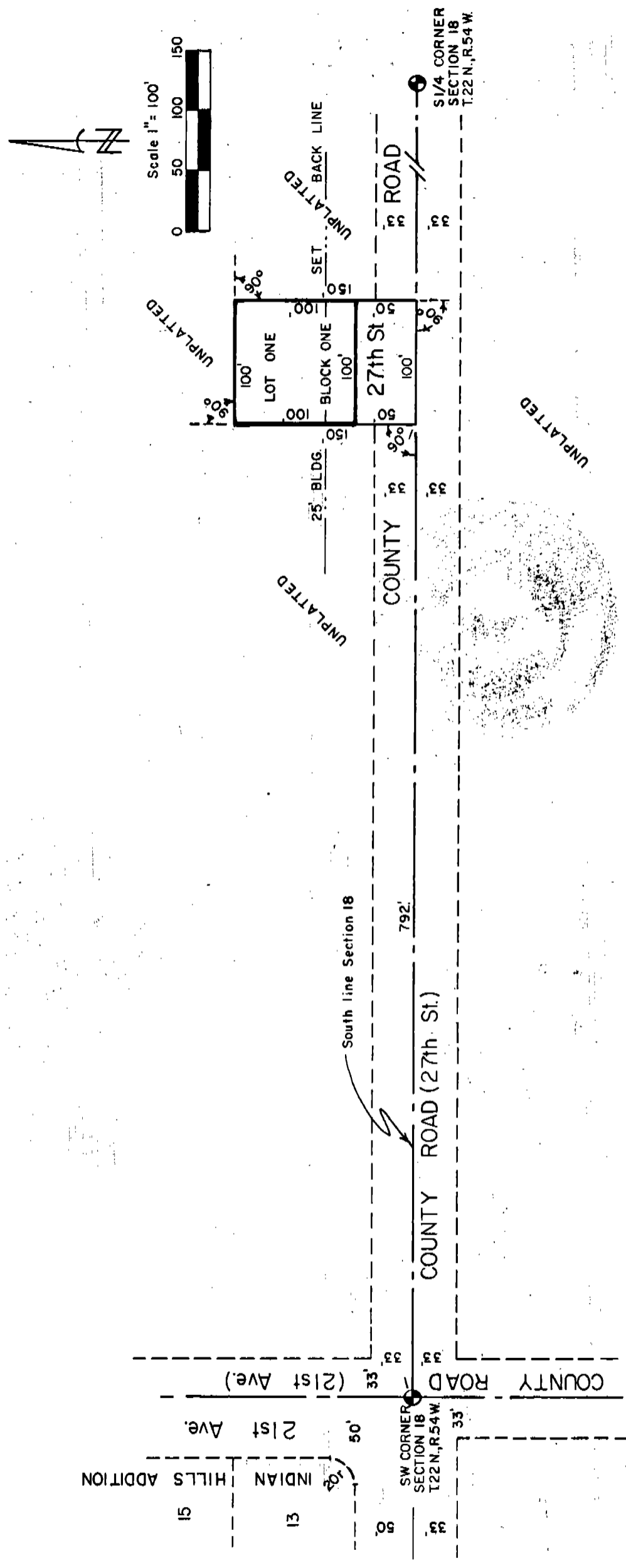


266

SECOND GABLE HEIGHTS SUBDIVISION

Part of the Southwest Quarter (1/4), Section 18,
Township 22 North, Range 54 West of the 6th
P.M. Scotts Bluff County, Nebraska



266

SECOND GABLE HEIGHTS SUBDIVISION
Scotts Bluff County, Nebraska
Continuation Sheet 2 of 3

SURVEYOR'S CERTIFICATE

I, Charles A. McClanahan, Nebraska Registered Land Surveyor L.S. 335, do hereby certify that I have surveyed a part of the Southwest Quarter (SW $\frac{1}{4}$) of Section Eighteen (18), Township Twenty-Two (22) North, Range Fifty-Four (54) West of the 6th P.M., in Scotts Bluff County, Nebraska, more particularly described as follows:

With reference to a point on the Southwest corner of such Section 18; thence easterly on the south line of such Section 18, a distance of 792.00 feet to the point of beginning; thence angle left of 90 degrees 00 minutes 00 seconds, a distance of 150.00 feet; thence angle right of 90 degrees 00 minutes 00 seconds, a distance of 100.00 feet; thence angle right of 90 degrees 00 minutes 00 seconds, a distance of 150.00 feet to a point on the south line of such Section 18; thence angle right of 90 degrees 00 minutes 00 seconds along the south line of such Section 18, a distance of 100.00 feet to the point of beginning, containing .3444 acres, more or less.

That the accompanying plat is a correct delineation of such survey, drawn to a scale of 100 feet to one inch, with all dimensions shown thereon in feet and decimals. That 5/8" x 36" iron rods are driven well into the ground at all corners of the lot. That each lot and block bears its own number. That the boundary of the subdivision is shown with a heavy solid line.

WITNESS MY HAND AND SEAL this 19th day of December, 1979.

Charles A. McClanahan

Charles A. McClanahan
Scottsbluff, Nebraska
Nebraska Registered Land Surveyor L.S. 335

