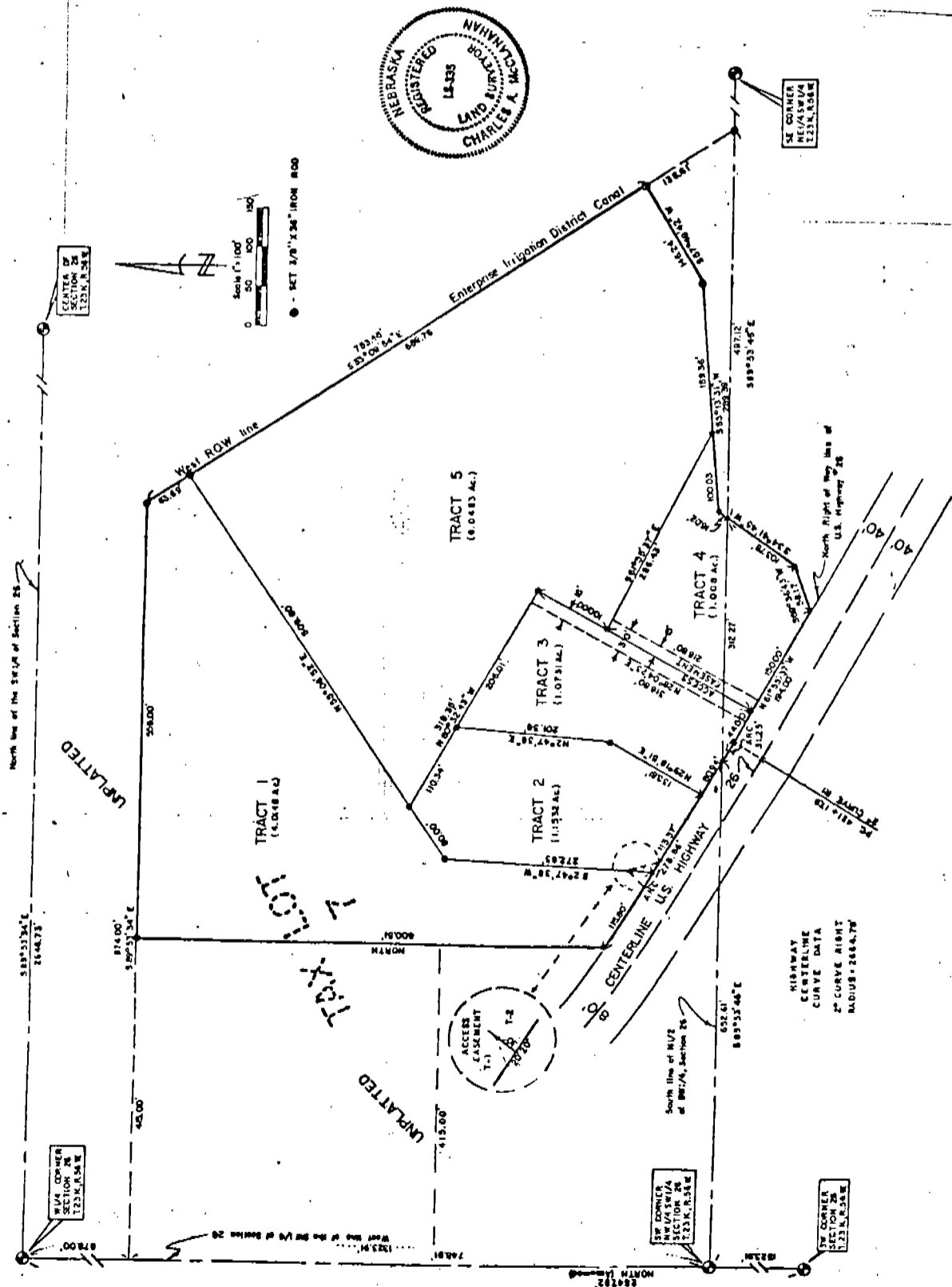


SIDDERS TRACTS SUBDIVISION
 Part of the SW 1/4 of Section 26, Township 23 North,
 Range 56 West of the 6th P.M. Scotts Bluff County,
 Nebraska.

232



SURVEYOR'S CERTIFICATE

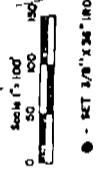
I, Charles A. McClanahan, Nebraska Registered Land Surveyor, L.S. 335, do hereby certify that I have surveyed an irregular tract of land situated in the North-Half (N/2) and extending partially into the South-Half (S/2) of the Southwest Quarter (SW 1/4) of Section Twenty-Six (26), Township Twenty-Three (23) North, Range Fifty-Six (56) West of the 6th P.M., in the vicinity of the City of Mitchell, Scotts Bluff County, Nebraska, more particularly described as follows:

With reference to a point on the Northwest corner of such SW 1/4; thence southerly (on an assumed bearing of S 0 degrees, 0 minutes E) a distance of 576.0 feet; thence angle left 89 degrees, 53 minutes, 34 seconds (bearing S 89 degrees, 53 minutes, 34 seconds E) a distance of 415.0 feet, an easterly direction to the point of beginning; thence continuing easterly on an extension of the last described line, a distance of 559.0 feet, to the west line of the right-of-way of the Enterprise Irrigation Canal; thence angle right 56 degrees, 43 minutes, 40 seconds a distance of 753.45 feet (bearing S 33 degrees, 00 minutes, 54 seconds E) on such west right-of-way line, in a southerly direction; thence angle right 90 degrees, 56 minutes, 36 seconds (bearing S 57 degrees, 00 minutes, 54 seconds W), a distance of 246.24 feet, in a southerly direction; thence angle right 27 degrees, 23 minutes, 49 seconds (bearing S 65 degrees, 13 minutes, 31 seconds W), a distance of 289.39 feet, in a westerly direction; thence angle left 50 degrees, 31 minutes, 46 seconds (bearing S 34 degrees, 41 minutes, 43 seconds W) a distance of 16.02 feet, in a southerly direction to a point on the south line of the North-Half (N/2) of such SW 1/4; thence continuing in such southerly direction, on an extension of the last described line, a distance of 103.78 feet; thence angle right 34 degrees, 54 minutes, 58 seconds, in a southerly direction (bearing S 69 degrees, 36 minutes, 43 seconds W) to intersect the northerly right-of-way line of U.S. Highway No. 26; thence angle right 48 degrees, 27 minutes, 40 seconds, a distance of 194.0 feet, in a northerly direction (bearing N 61 degrees, 35 minutes, 37 seconds W) on such northerly right-of-way line to the point of curvature of a 2824.79 foot radius curve to the right; thence continuing northerly on the arc of such curve, an arc distance of 31.25 feet (the long chord distance of such arc being N 61 degrees, 36 minutes, 29 seconds W for a long chord distance of 31.25 feet) to intersect the south line of the North-Half (N/2) of the SW 1/4; thence continuing northerly on such northerly right-of-way line of U.S. Highway No. 26, an arc distance of 278.65 feet (the long chord bearing of such arc being N 59 degrees, 27 minutes, 53 seconds W) for a long chord distance of 278.78 feet) to intersect a line extending north and south which is 415.0 feet east of the west line of such SW 1/4, extended perpendicularly to such west line; thence angle right 58 degrees, 27 minutes, 50 seconds, a distance of 600.51 feet, in a northerly direction (bearing N 0 degrees and 0 minutes E) to the point of beginning, containing 13.2974 acres, more or less.

That I have prepared a plat and subdivision of such survey to be known as "SIDDERS TRACTS SUBDIVISION" in Scotts Bluff County, Nebraska; that the accompanying plat is a correct delineation of such survey drawn to a scale of 100 feet to the inch, with all dimensions shown thereon in feet and decimals; that 3/8" x 36" iron rods are driven well into the ground at all corners of each tract and every intermediary points; that each tract bears its own number; that the boundary of the subdivision is outlined with a heavy solid line.

WITNESS MY HAND AND SEAL this 14th day of December, 19 77

Charles A. McClanahan
 Charles A. McClanahan
 Scottsbluff, Nebraska
 Nebraska Registered Land Surveyor L.S. 335



SE 1/4 CORNER
 NW 1/4 SW 1/4
 SECTION 26
 T23N, R56W

SE CORNER
 SECTION 26
 T23N, R56W

HIGHWAY
 CENTERLINE
 CURVE DATA
 2° CURVE RIGHT
 RADIUS: 2824.79'

SW CORNER
 NW 1/4 SW 1/4
 SECTION 26
 T23N, R56W

SW CORNER
 SECTION 26
 T23N, R56W

North line of the SW 1/4 of Section 26

UNPLATED

UNPLATED

TRACT 1
 (1.4818 AC.)

TRACT 2
 (1.1238 AC.)

TRACT 3
 (1.0731 AC.)

TRACT 4
 (1.008 AC.)

TRACT 5
 (6.0483 AC.)



South line of NW 1/4 of SW 1/4, Section 26

North Right of Way line of U.S. Highway 26

Enterprise Irrigation District Canal

CENTERLINE U.S. HIGHWAY

West line of the SW 1/4 of Section 26

East line of the SW 1/4 of Section 26

