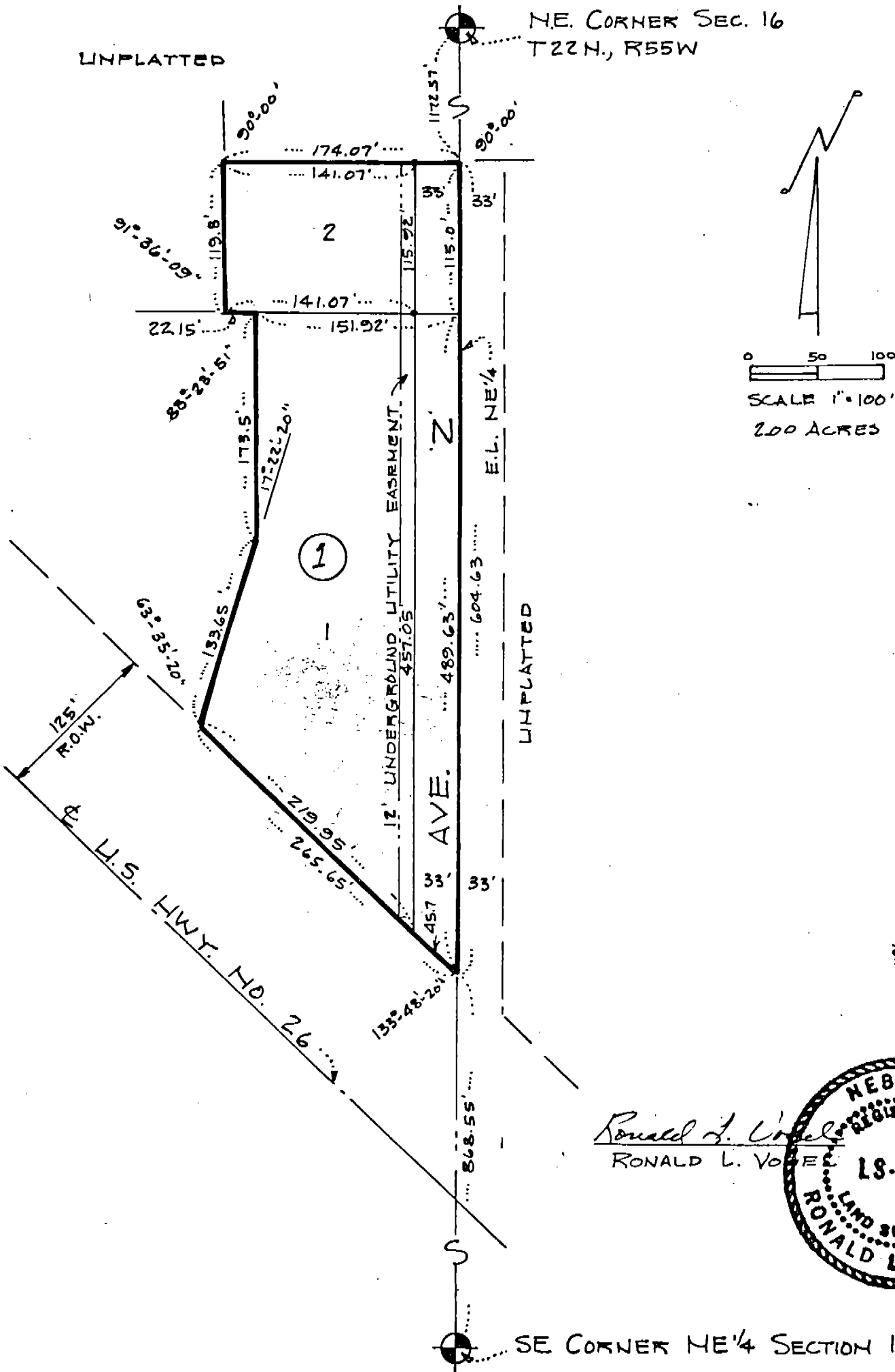


SEIVER SECOND SUBDIVISION

LOTS 1 AND 2, BLOCK 1

A SUBDIVISION OF PART OF THE NE¹/₄ SECTION 16, T22N., R55W OF THE 6TH P.M., SCOTTS BLUFF COUNTY, NEBRASKA.



SURVEYOR'S CERTIFICATE

I, Ronald L. Vogel, a competent surveyor of Scotts Bluff County, Nebraska, hereby certify that I have surveyed a part of the Northeast Quarter (NE $\frac{1}{4}$) of Section Sixteen (16), Township Twenty-two (22) North, Range Fifty-five (55) West of the 6th P.M., Scotts Bluff County, Nebraska, such tract being more particularly described as follows:

With reference to the Northeast corner of such Section 16; then South on the East Line of such NE $\frac{1}{4}$, a distance of 1172.57 feet to the point of beginning; then continuing South on the East Line of such NE $\frac{1}{4}$, a distance of 604.63 feet to the Northerly Right-of-Way Line of U.S. Highway No. 26; then a deflection angle to the right of 133 degrees-48 minutes-20 seconds on such Right-of-Way Line, a distance of 265.65 feet; then a deflection angle to the right of 63 degrees-35 minutes-20 seconds, a distance of 133.65 feet; then a deflection angle to the left of 17 degrees-22 minutes-20 seconds, a distance of 173.5 feet; then a deflection angle to the left of 91 degrees-36 minutes-09 seconds, a distance of 22.15 feet; then a deflection angle to the right of 91 degrees-36 minutes-09 seconds, a distance of 119.8 feet; then a deflection angle to the right of 90 degrees-00 minutes, a distance of 174.07 feet to the point of beginning, containing an area of 2.0 acres.

That I have further surveyed and subdivided the land as above described as "Seiver Second Subdivision, Lots One (1) and Two (2), Block One (1)", including parts of streets therein.

That the accompanying plat is a true delineation of such survey and subdivision, drawn to a scale of 100 feet to the inch. That all corners are marked with 5/8" x 18" iron rods and that all dimensions are in feet and decimals. That each block bears its own number and that the boundary of the land subdivided is shown on the plat with a heavy solid line.

WITNESS MY HAND AND SEAL this 23rd day of September, 1978.



Ronald L. Vogel
RONALD L. VOGEL
Nebraska Registered Land Surveyor
L.S. 266