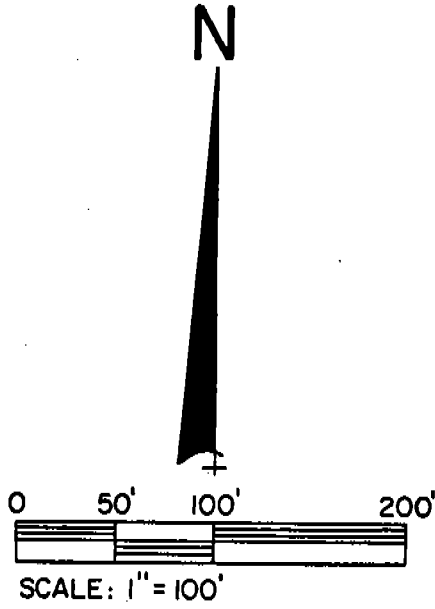
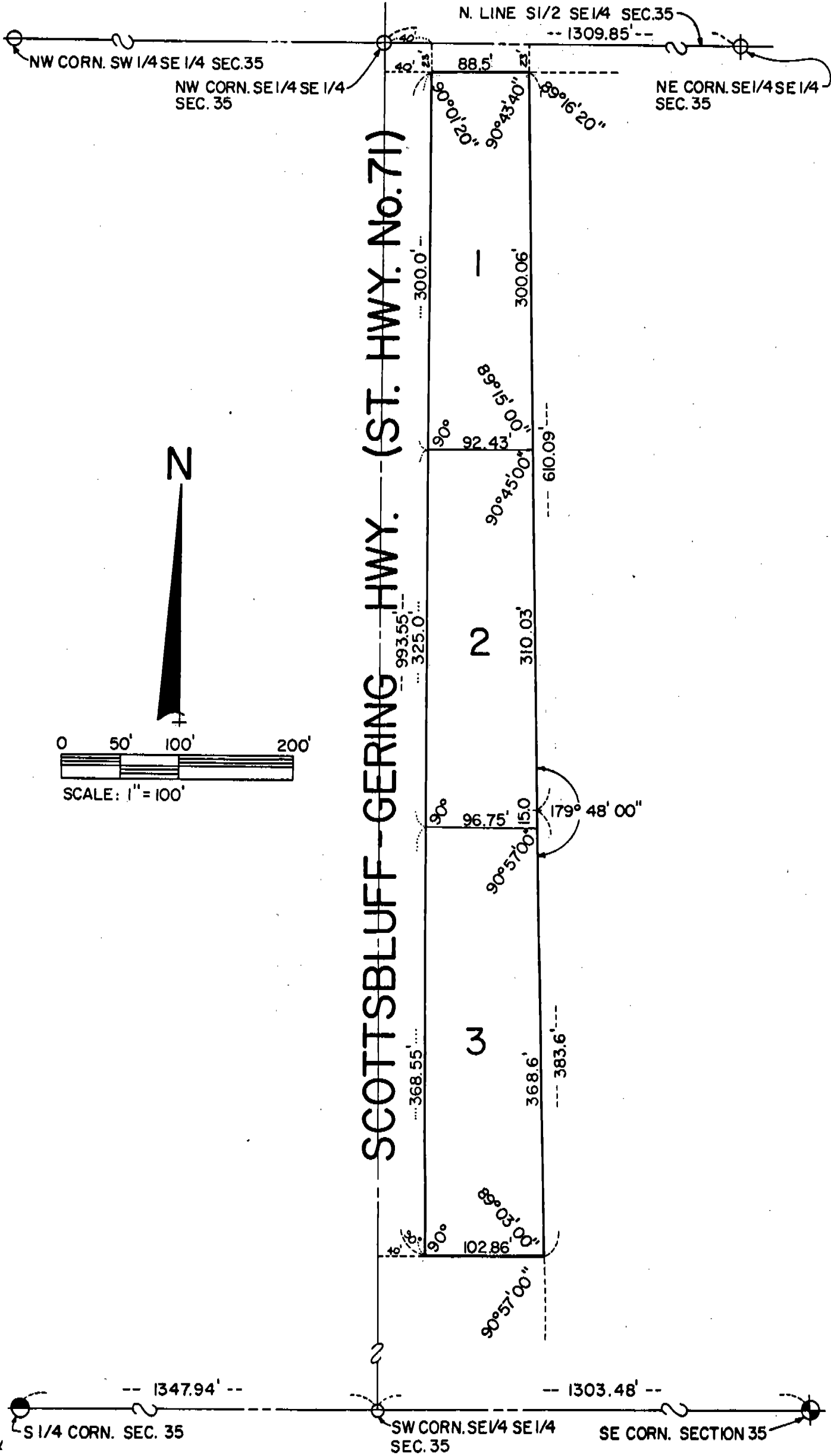


See Replat of Plat 3 Upland Addition - Bk 191 Pg 514

# UPLAND ADDITION

7136

A SUBDIVISION OF PART OF THE SE 1/4 SE 1/4 SECTION 35, T22 N, R55 W OF THE 6th P.M., SCOTTS BLUFF COUNTY, NEBRASKA



7136

SURVEYOR'S CERTIFICATE

I, Ronald L. Vogel, a competent surveyor of Scotts Bluff County, Nebraska, hereby certify that I have surveyed a tract of land situated in part of the Southeast Quarter of the Southeast Quarter (SE 1/4 SE 1/4) of Section Thirty-five (35), Township Twenty-two (22) North, Range Fifty-five (55) West of the 6th P.M., Scotts Bluff County, Nebraska, such tract of land being more particularly described as follows:

With reference to the Northeast corner of such SE 1/4 SE 1/4; then West on the North Line of such SE 1/4 SE 1/4, a distance of 1309.85 feet; then South on the West Line of such SE 1/4 SE 1/4, a distance of 23.0 feet; then East, parallel to the North Line of such SE 1/4 SE 1/4, a distance of 40.0 feet to the point of beginning, such point of beginning being on the Easterly Right-of-Way Line of State Highway No. 71; then continuing East, parallel to the North Line of such SE 1/4 SE 1/4, a distance of 88.5 feet; then a deflection angle to the right of 89°-16'-20" a distance of 610.09 feet; then a deflection angle to the left of 0°-12'-00", a distance of 383.6 feet; then a deflection angle to the right of 90°-57'-00", a distance of 102.86 feet to the Easterly Right-of-Way Line of State Highway No. 71; then a deflection angle to the right of 90°-00', feet to the point of beginning, containing an area of 2.17 acres, more or less.

That I have further subdivided and platted such land as above described as Lots One (1), Two (2) and Three (3), Upland Addition, a Sub-division of part of the SE 1/4 of the SE 1/4 of Section 35, Township 22 North, Range 55 West of the 6th P.M., in the City of Gering, Nebraska.

That the accompanying plat is a true delineation of such survey and subdivision, drawn to a scale of 100 feet to the inch. That all corners are marked with 5/8" x 18" iron rods and that all dimensions are in feet and decimals. That each lot bears its own number and that the boundary of the land subdivided is shown on the plat with a heavy solid line.

WITNESS MY HAND AND SEAL this 8th day of December, 1977.

*Ronald L. Vogel*  
RONALD L. VOGEL  
Nebraska Registered Land Surveyor  
L.S. 266





