

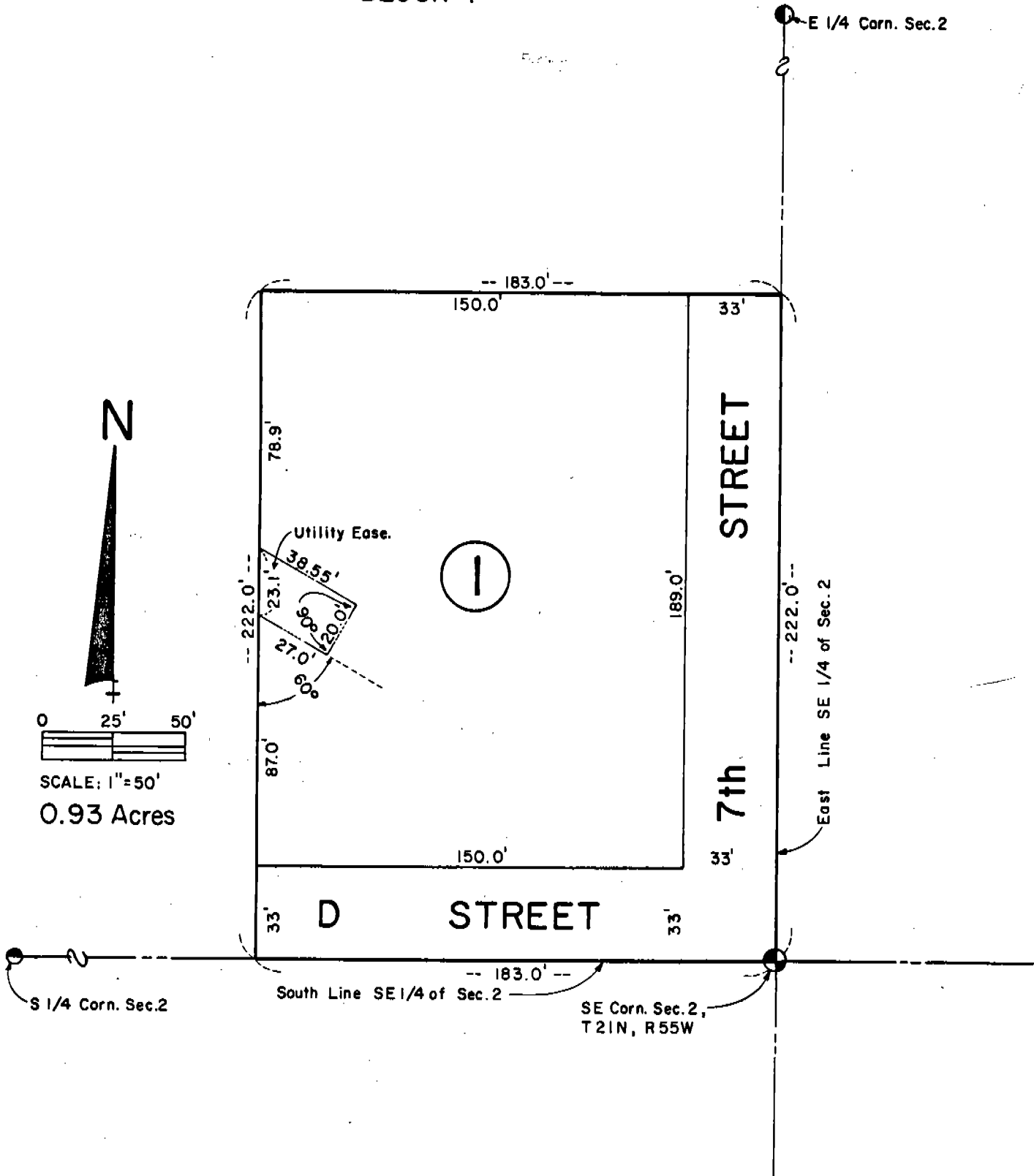
TEMPLE SUBDIVISION

6996

LOCATED IN SE 1/4 OF SECTION 2, T21N, R55W OF THE 6th P.M.,
SCOTTS BLUFF COUNTY, NEBRASKA.

483

BLOCK I



3
483

SURVEYOR'S CERTIFICATE

I, Ronald L. Vogel, a competent surveyor of Scotts Bluff County, Nebraska, hereby certify that I have surveyed a tract of land situated in the Southeast Quarter of the Southeast Quarter (SE 1/4 SE 1/4) of Section Two (2), Township Twenty-one (21) North, Range Fifty-five (55) West of the 6th P.M., Scotts Bluff County, Nebraska, such tract of land being more particularly described as follows:

Beginning at the Southeast corner of such Section 2; then West on the South Line of such SE 1/4 of Section 2, a distance of 183.0 feet; then North, parallel to the East Line of such SE 1/4, a distance of 222.0 feet; then East, parallel to the South Line of such SE 1/4, a distance of 183.0 feet to the East Line of such SE 1/4; then South on the East Line of such SE 1/4, a distance of 222.0 feet to the point of beginning, containing an area of 0.93 acres.

That I have further surveyed and subdivided the land as above described as "Temple Subdivision, Block One (1)", including parts of streets therein.

That the accompanying plat is a true delineation of such survey and subdivision, drawn to a scale of 100 feet to the inch. That all corners are marked with 5/8" x 36" iron rods. That all dimensions are in feet and decimals and that each block bears its own number. That the boundary of the land subdivided is shown on the plat with a heavy solid line.

WITNESS MY HAND AND SEAL this 22nd day of November, 1977.

Ronald L. Vogel

RONALD L. VOGEL
Nebraska Registered Land Surveyor
L.S. 266



