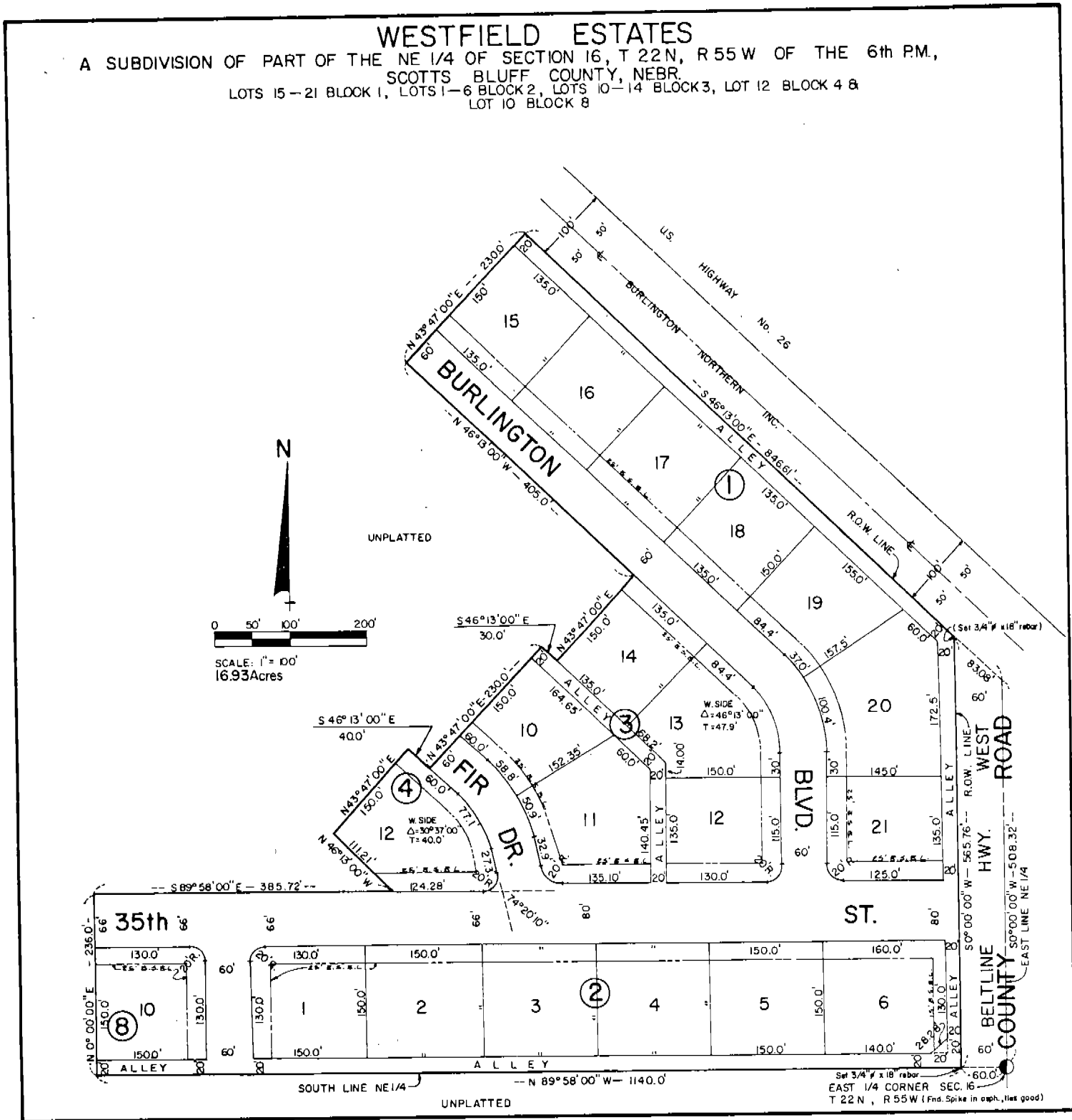


4673



Note: See Westfield Estates Replat - Deed Book 104-27
 vacated & replatted
 N/K/A Westfield Estates Replat

4673

SURVEYOR'S CERTIFICATE

I, Ronald L. Vogel, a competent surveyor of Scotts Bluff County, Nebraska, hereby certify that I have surveyed a tract of land situated in the Northeast Quarter (NE 1/4) of Section Sixteen (16), Township Twenty-two (22) North, Range Fifty-five (55) West of the 6th P.M., Scotts Bluff County, Nebraska, such tract of land being more particularly described as follows:

With reference to the Southeast corner of such NE 1/4; then North 89°-58'-00" West on the South Line of such NE 1/4, a distance of 60.0 feet to the point of beginning, such point of beginning being on the West Right-of-Way Line of the South Beltline Highway West; then continuing North 89°-58'-00" West on the South Line of such NE 1/4, a distance of 1140.0 feet; then NORTH, a distance of 236.0 feet; then South 89°-58'-00" East, a distance of 385.72 feet; then North 46°-13'-00" West, a distance of 111.21 feet; then North 43°-47'-00" East, a distance of 150.0 feet; then South 46°-13'-00" East, a distance of 40.0 feet; then North 43°-47'-00" East, a distance of 230.0 feet; then South 46°-13'-00" East, a distance of 30.0 feet; then North 43°-47'-00" East, a distance of 150.0 feet; then North 46°-13'-00" West, a distance of 405.0 feet; then North 43°-47'-00" East, a distance of 230.0 feet to the Southerly Right-of-Way Line of the Burlington Northern Inc.; then South 46°-13'-00" East on such Right-of-Way Line, a distance of 846.61 feet to intersect the West Right-of-Way Line of such South Beltline Highway West; then SOUTH along such Right-of-Way Line, a distance of 565.76 feet to the point of beginning, containing an area of 15.12 acres, more or less.

That I have further surveyed and subdivided the land as above described as "Westfield Estates, Lots Fifteen (15) through Twenty-one (21), Block One (1), Lots One (1) through Six (6), Block Two (2), Lots Ten (10) through Fourteen (14), Block Three (3), Lot Twelve (12), Block Four (4) and Lot Ten (10), Block Eight (8), including parts of streets, avenues and alleys therein.

That the accompanying plat is a true delineation of such survey and subdivision, drawn to a scale of 100 feet to the inch. That all block corners are marked with 5/8" x 36" iron rods and all other corners are marked with 5/8" x 18" iron rods. That all dimensions are in feet and decimals and that each lot and block bears its own number. That the boundary of the land subdivided is shown on the plat with a heavy solid line.

WITNESS MY HAND AND SEAL this 3rd day of August, 1977.



Ronald L. Vogel
RONALD L. VOGEL
Nebraska Registered Land Surveyor
L.S. 266
Scotts Bluff County Surveyor

