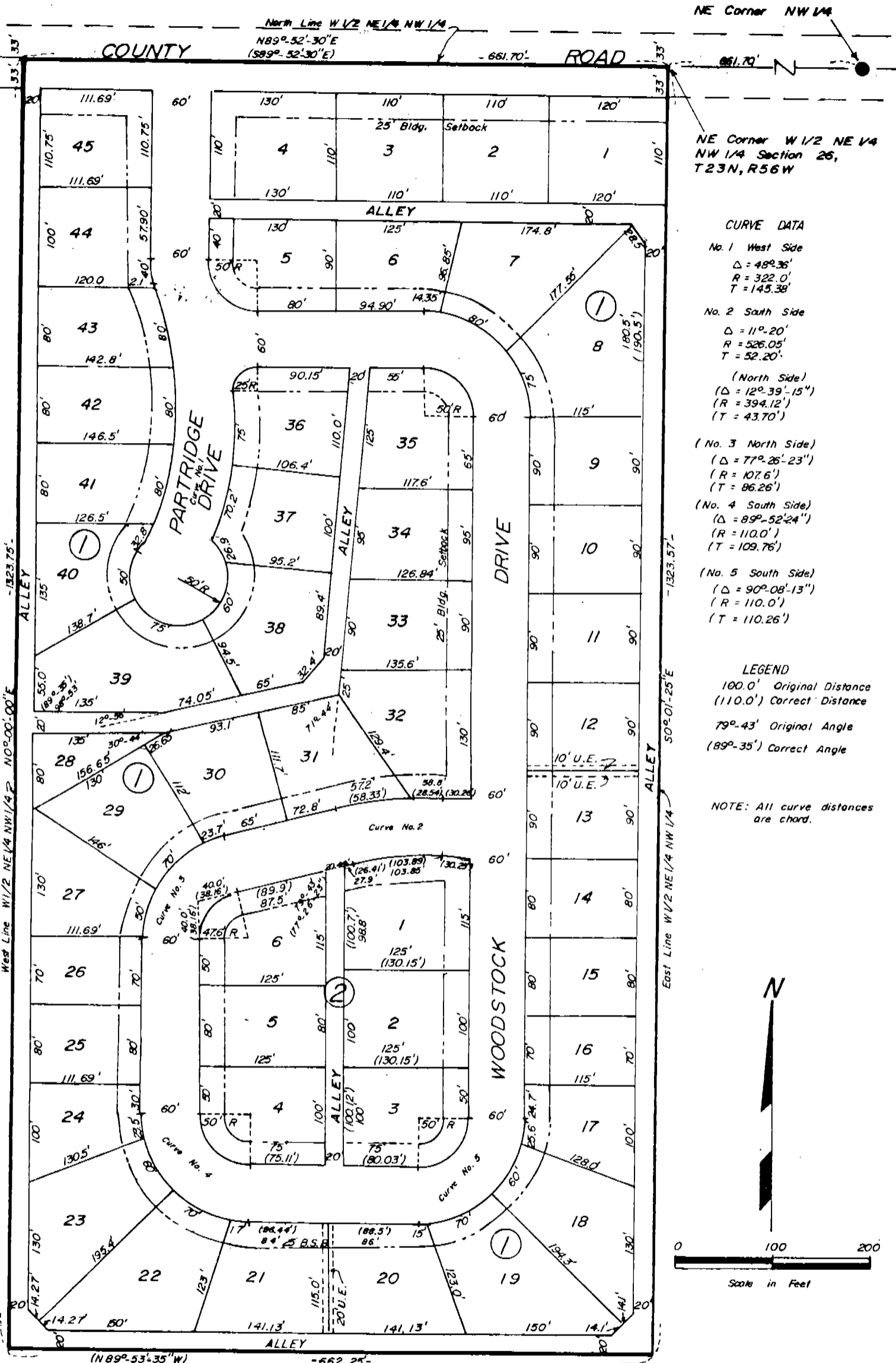


AMENDED WOODSTOCK HILLS

4468

A Subdivision of part of the W/2 NE/4 NW/4 Section 26, T23N, R56W, of the 6th P.M., Scotts Bluff County, Nebraska.



NE Corner W/2 NE/4 NW/4 Section 26, T23N, R56W

CURVE DATA

No. 1 West Side
Δ = 48°-36'
R = 322.0'
T = 145.38'

No. 2 South Side
Δ = 11°-20'
R = 526.05'
T = 52.20'

(North Side)
Δ = 12°-39'-15"
R = 394.12'
T = 43.70'

(No. 3 North Side)
Δ = 77°-26'-23"
R = 107.6'
T = 86.26'

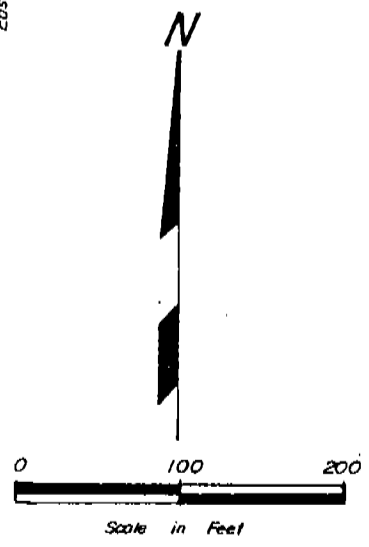
(No. 4 South Side)
Δ = 89°-52'-24"
R = 110.0'
T = 109.76'

(No. 5 South Side)
Δ = 90°-08'-13"
R = 110.0'
T = 110.26'

LEGEND

- 100.0' Original Distance
- (110.0') Correct Distance
- 79°-43' Original Angle
- (89°-35') Correct Angle

NOTE: All curve distances are chord.



NOTE: See Subd. Lot 41-42 Blk 1 Woodstock Hills, Book 160 Page 547
 NOTE: See Subd Lots 30-31-32 Blk 1 Woodstock Hills, Book 169-697
 NOTE: See Replat Lots 9&10, Blk 1 Woodstock Hills, Book 202 page 542

SURVEYOR'S CERTIFICATE

I, Ronald L. Vogel, a competent surveyor of Scotts Bluff County, Nebraska, hereby certify that I have surveyed WOODSTOCK HILLS, a subdivision of part of the West Half of the Northeast Quarter of the Northwest Quarter (W $\frac{1}{2}$ NE $\frac{1}{4}$ NW $\frac{1}{4}$) of Section 26, Township 23 North, Range 56 West of the 6th P.M., Scotts Bluff County, Nebraska, and that the accompanying plat has been prepared in order to correct certain discrepancies that exist on the original plat of WOODSTOCK HILLS SUBDIVISION and that where corrections are necessary, they are indicated as shown in the legend.

WITNESS MY HAND AND SEAL this 8th day of August, 1977.



Ronald L. Vogel
Ronald L. Vogel, Nebraska Registered
Land Surveyor, L.S. 266

State of Nebraska, Scotts Bluff County ss. ✓
Entered in Numerical Index and filed for
record the 11 day of August, 1977
at 10:50 o'clock A. M., and recorded in
Book 155 of Deeds
on page 240
Mary Jo Lellis
Register of Deeds
By _____ Deputy