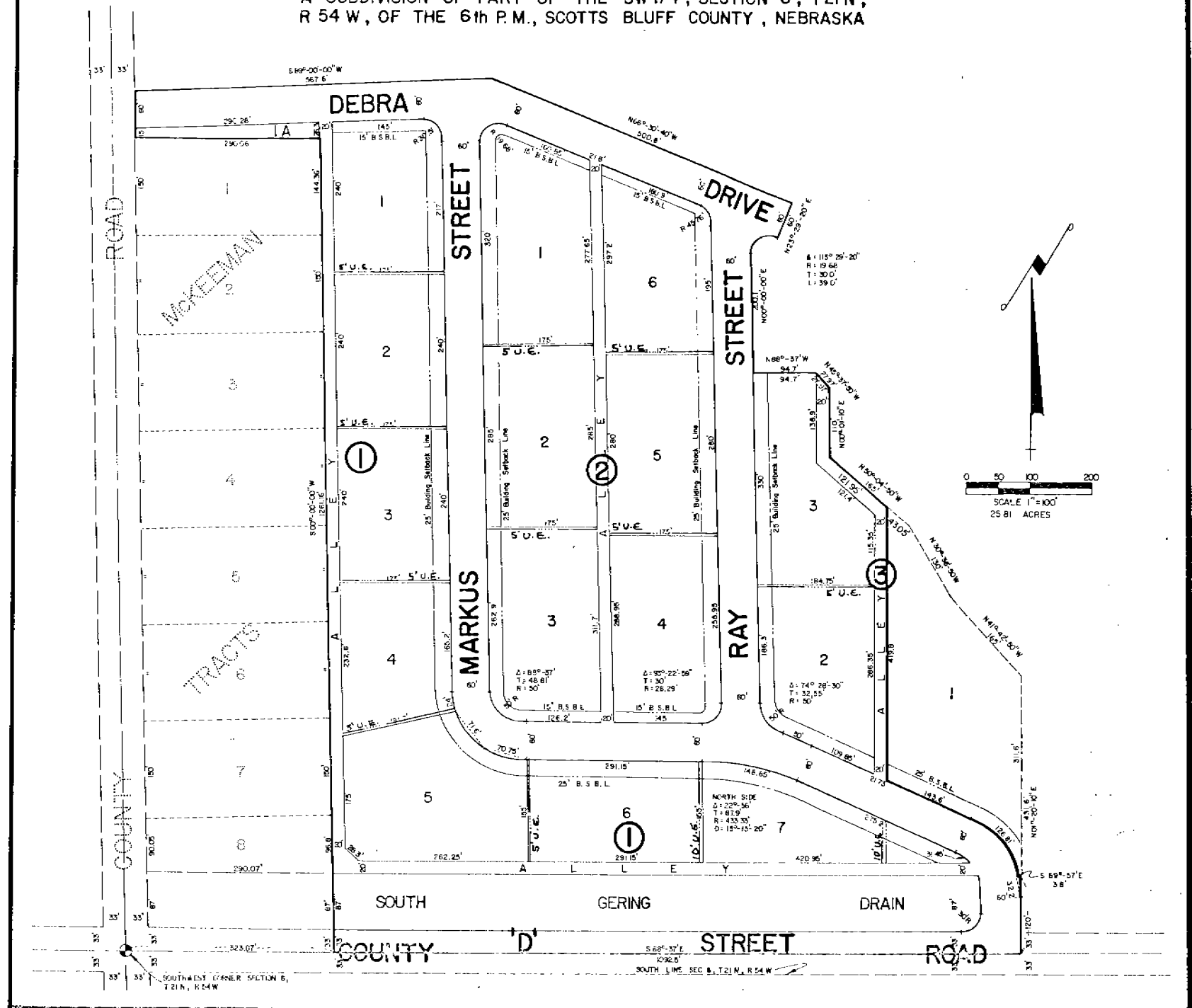


1391

TREASURE VALLEY ESTATES

A SUBDIVISION OF PART OF THE SW 1/4, SECTION 6, T21N,
R 54 W, OF THE 6th P.M., SCOTTS BLUFF COUNTY, NEBRASKA



3/17

SURVEYOR'S CERTIFICATE

I, Ronald L. Vogel, a competent surveyor of Scotts Bluff County, Nebraska, hereby certify that I have surveyed a tract of land situated in the Southwest Quarter (SW 1/4) of Section Six (6), Township Twenty-one (21) North, Range Fifty-four (54) West of the 6th P.M., Scotts Bluff County, Nebraska, such tract of land being more particularly described as follows:

With reference to the Southwest corner of such Section 6; then South 88°-37' East on the South Line of such Section 6, a distance of 323.07 feet to the point of beginning; then continuing South 88°-37' East on the South Line of such Section 6, a distance of 1092.5 feet; then North 01°-20'-10" East, a distance of 120.0 feet to the Southeast corner of Lot One (1), Block Three (3), Treasure Valley Estates, according to the recorded plat thereof; then North 89°-57' West on the South Line of such Lot 1, a distance of 3.8 feet; then Northwesterly along the Southerly Line of such Lot 1, a distance of 126.81 feet to the P.T. of the curve; then North 67°-00' West, tangent to such curve, a distance of 143.6 feet to the Southwest corner of such Lot 1; then NORTH on the West Line of such Lot 1, a distance of 419.8 feet to the Northwest corner of such Lot 1; then North 50°-04'-50" West, a distance of 121.95 feet; then North 00°-01'-10" East, a distance of 110.0 feet; then North 45°-37'-50" West, a distance of 27.97 feet; then North 88°-37'-00" West, a distance of 94.7 feet; then North 00°-00'-00" West, a distance of 200.1 feet to the P.C. of a 19.68 foot radius curve to the right, whose tangent is 30.0 feet and Central Angle of 113°-29'-20"; then along such curve to the right, a distance of 39.0 feet to the termination of such curve; then North 23°-29'-20" East, a distance of 60.0 feet; then North 66°-30'-40" West, a distance of 500.8 feet; then South 89°-00'-00" West, a distance of 567.6 feet; then South 00°-00'-00" West, a distance of 75.0 feet to the Northwest corner of Lot One (1), McKeeman Tracts, a subdivision of part of the Southwest Quarter (SW 1/4) of Section Six (6), according to the recorded plat thereof; then East, along the North Line of such Lot One (1), a distance of 290.06 feet to the Northeast corner of such Lot One (1); then South 00°-00'-00" West, on the East Line of McKeeman Tracts, a distance of 1261.16 feet to the point of beginning, containing an area of 25.81 acres, more or less.

That I have further surveyed and subdivided such land as above described as "Treasure Valley Estates, Lot 1A, Block One (1), Lots 1-7, Block One (1), Lots 1-6, Block Two (2) and Lots 2 and 3, Block Three (3)", a subdivision of part of the Southwest Quarter (SW 1/4) of Section Six (6), Township Twenty-one (21) North, Range Fifty-four (54) West of the 6th P.M., Scotts Bluff County, Nebraska.

That the accompanying plat is a true delineation of such survey and subdivision, drawn to a scale of 100 feet to the inch. That all block corners are marked with 5/8" x 30" iron rods and all other corners are marked with 5/8" x 18" iron rods. That all dimensions are in feet and decimals and that each lot and block bears its own number. That the boundary of the land subdivided is shown on the plat with a heavy solid line and that adjoining subdivided lands are shown dashed for orientation purposes.

WITNESS MY HAND AND SEAL this 1st day of February, 1977.



Ronald L. Vogel
RONALD L. VOGEL
Nebraska Registered Land Surveyor
L.S. 266

