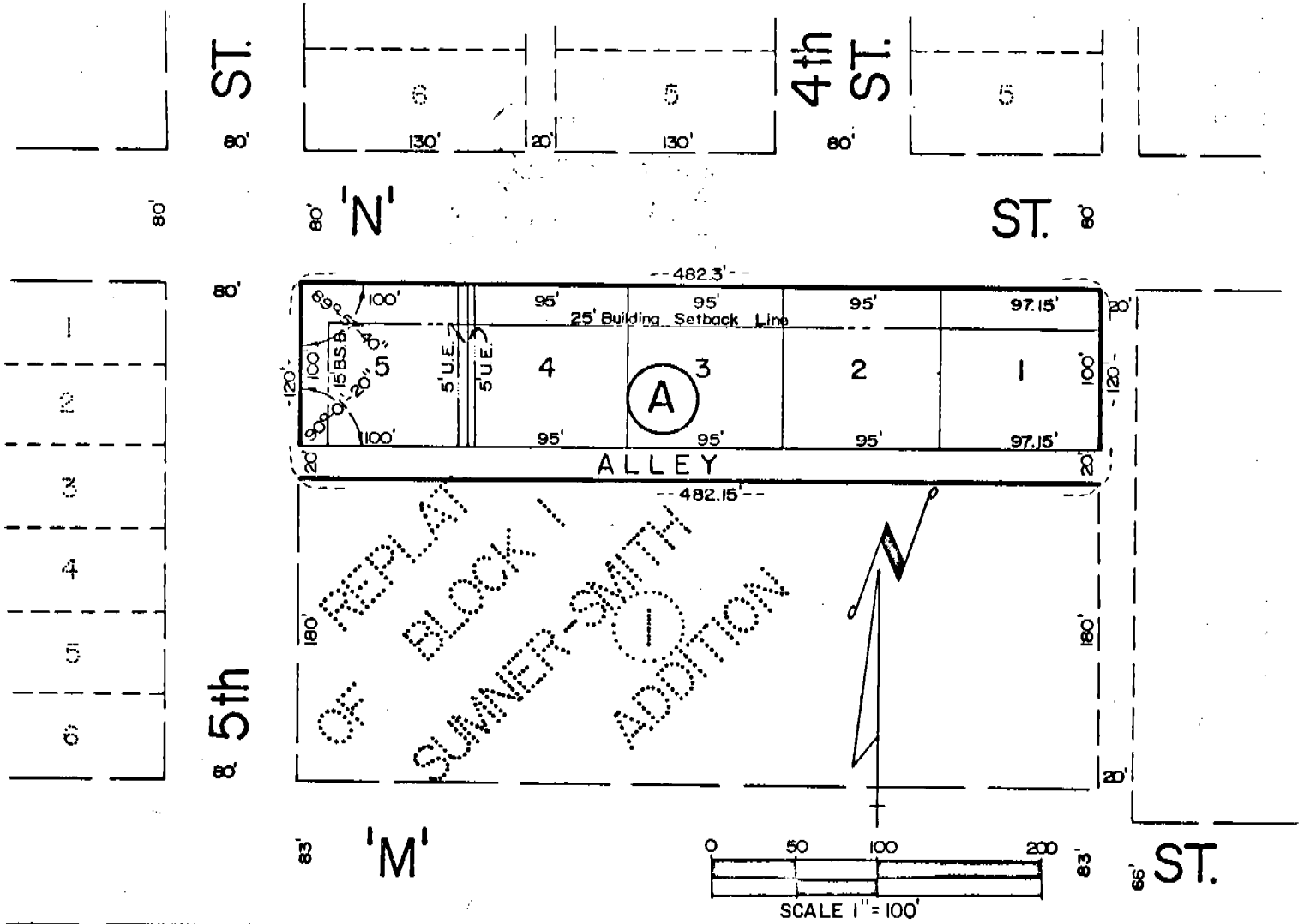


SUMNER - SMITH 2nd ADDITION, BLOCK A

A SUBDIVISION OF THE NORTH 120' OF "REPLAT OF BLOCK 1, SUMNER-SMITH ADDITION" TO THE CITY OF GERING, NEBRASKA



- SURVEYOR'S CERTIFICATE -

I, Ronald L. Vogel, a competent Surveyor of Scotts Bluff County, Nebraska, hereby certify that I have surveyed the North 120 feet of "Replat of Block One, Sumner-Smith Addition" to the City of Gering, Nebraska, and that I have further subdivided and platted such real estate as Sumner-Smith Second Addition, Lots 1 through 5, Block A, a subdivision in the City of Gering, Nebraska. That all corners are marked with 3/4" x 18" iron rods and that all dimensions are in feet and decimals. That the boundary of the subdivision is shown on the plat with a heavy solid line and that adjoining lot lines are shown dashed for orientation purposes. That each lot and block bears its own number. That the accompanying plat is drawn to a scale of 100 feet to the inch.

WITNESS MY HAND AND SEAL this 11th day of April, 1975.



Ronald L. Vogel
 RONALD L. VOGEL, NEBRASKA REGISTERED
 LAND SURVEYOR LS 266

State of Nebraska, Scotts Bluff County ss.
 Entered in Numerical Index and filed for
 record the 13 day of May, 1975
 at 3:25 o'clock P. M., and recorded in
 Book 146 of Deeds
 on page 538
Mary Jo Kellie
 Register of Deeds
 By Deputy

1800