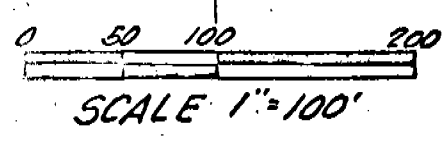
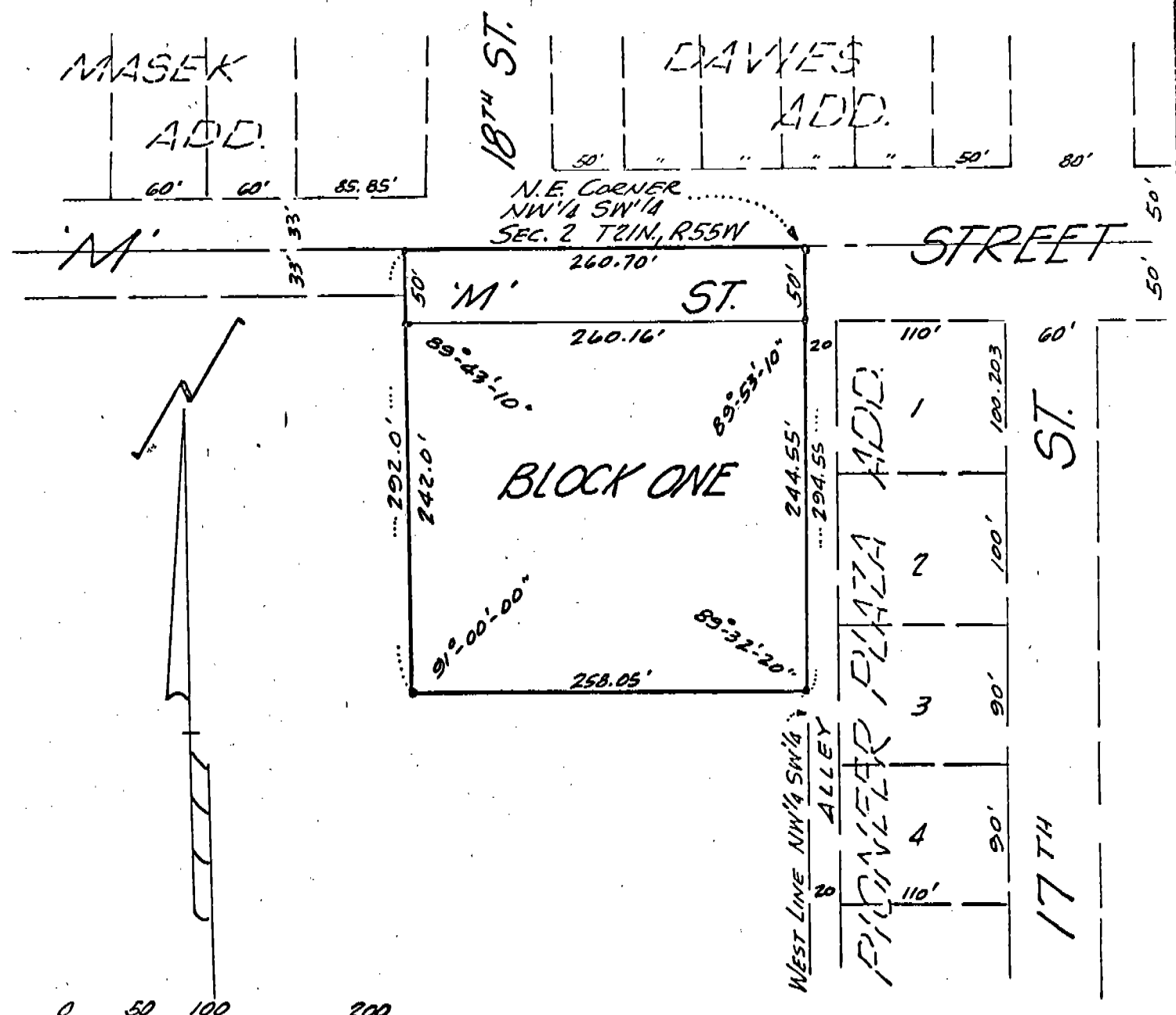


# WEATHERFIELD SUBDIVISION

OF PART OF THE NW<sup>1</sup>/<sub>4</sub> SW<sup>1</sup>/<sub>4</sub> OF SECTION 2  
T21N, R55W OF THE 6<sup>TH</sup> P.M., SCOTTS BLUFF CO, NEBRASKA



State of Nebraska, Scotts Bluff Co. ss.  
 Entered in Numerical Index and filed for  
 record the 30 day of April, 1914  
 at 9:05 o'clock A. M., and recorded in  
 Book 143 of Deeds  
 on page 350  
Mary Jo Kellie  
 Register of Deeds  
 By \_\_\_\_\_ Deputy

NUMERICAL  
 GENERAL  
 TAX REG.  
 PICTURED

1664

• SURVEYOR'S CERTIFICATE •

I, Ronald L. Vogel, a competent surveyor of Scotts Bluff County, Nebraska, hereby certify that I have surveyed WEATHERFIELD SUBDIVISION, BLOCK ONE, a subdivision of part of the Northwest Quarter of the Southwest Quarter (NW $\frac{1}{4}$  SW $\frac{1}{4}$ ) of Section Two (2), Township Twenty-one (21) North, Range Fifty-five (55) West of the 6<sup>th</sup> P.M., Scotts Bluff County, Nebraska, the boundary of such subdivision being more particularly described as follows:

BEGINNING at the Northeast corner of such NW $\frac{1}{4}$  SW $\frac{1}{4}$ ; then South on the East Line of such NW $\frac{1}{4}$  SW $\frac{1}{4}$ , a distance of 294.55; then a deflection angle to the right of 90 degrees 27 minutes 40 seconds, a distance of 258.05 feet; then a deflection angle to the right of 89 degrees 00 minutes 00 seconds, a distance of 292.0 feet to the North Line of such NW $\frac{1}{4}$  SW $\frac{1}{4}$ ; then a deflection angle to the right of 90 degrees 16 minutes 50 seconds, on the North Line of such NW $\frac{1}{4}$  SW $\frac{1}{4}$ , a distance of 260.70 feet to the point of beginning, containing an area of 1.75 acres, more or less.

That the accompanying plat is a true delineation of such survey and subdivision drawn to a scale of 100 feet to the inch. That all corners are marked with 3/4" x 36" iron rods and that all dimensions are in feet and decimals. That the Block, as shown, bears its own number.

WITNESS MY HAND AND SEAL this 18<sup>th</sup> day of April, 1914.

Ronald L. Vogel

Ronald L. Vogel, Nebraska  
Registered Land Surveyor L.S. 266

• DEDICATION •

I, the undersigned, being the owner of that part of the NW $\frac{1}{4}$  SW $\frac{1}{4}$  of Section 2, Township 21 North, Range 55 West of the 6<sup>th</sup> P.M. Scotts Bluff County, Nebraska, as described in the foregoing "Surveyor's Certificate" and shown by the accompanying plat, have caused such real estate to be surveyed and platted as WEATHERFIELD SUBDIVISION, BLOCK ONE, as shown by the accompanying plat and surveyor's certificate.

The foregoing subdivision and the Streets as appear on the plat is made with the free consent and in accordance with the desires of the undersigned owners.

We hereby dedicate the Street shown on the plat to the use and benefit of the public.

DATED this 22<sup>nd</sup> day of April, 1914.

1664

Grace M. Weatherfield  
Grace M. Weatherfield

- ACKNOWLEDGEMENT -

State of Nebraska )  
Scotts Bluff County )

Before me, a Notary Public, qualified and acting in such County, personally came Grace M. Weatherfield, a single person, to me known to be the identical person who signed the foregoing "DEDICATION" and acknowledged the execution thereof to be her voluntary act and deed.

WITNESS MY HAND AND NOTARIAL SEAL this 22<sup>ND</sup> day of April, 1974.



Richard J. Brown  
NOTARY PUBLIC.

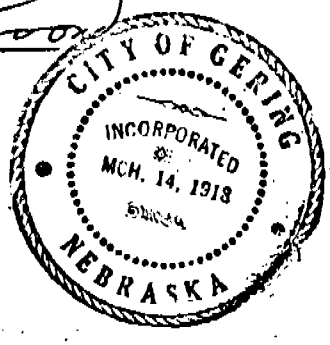
commission expires: Oct. 22, 1974

- APPROVAL AND ACCEPTANCE -

1. The foregoing subdivision of "WEATHERFIELD SUBDIVISION" Block One, approved and accepted by the Mayor and City Council by Resolution 04-74-5 duly passed this 22<sup>ND</sup> day of April, 1974.

W. Richard Probst  
MAYOR

ATTEST: Richard J. Brown  
City Clerk



1664