

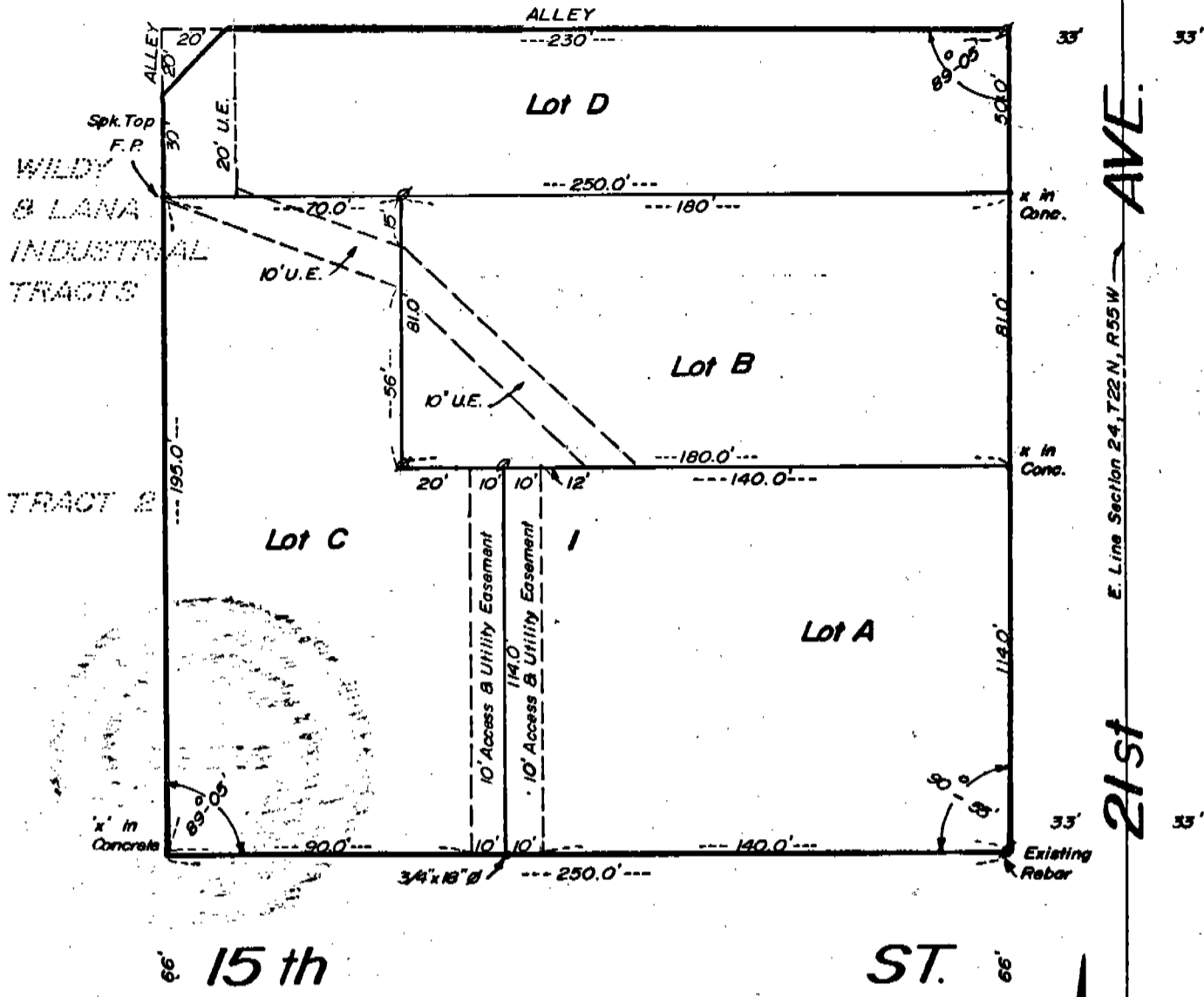
480

WIEDEMAN SUBDIVISION

2432

Lots A, B, C, and D

A Subdivision of Tract One, Wildy & Lana Industrial Tracts, situated in Pt. of the SE 1/4 Section 24, T22 N, R55 W, Scotts Bluff Co., Nebraska.



PD 950
M.C. Schaff
Assoc.

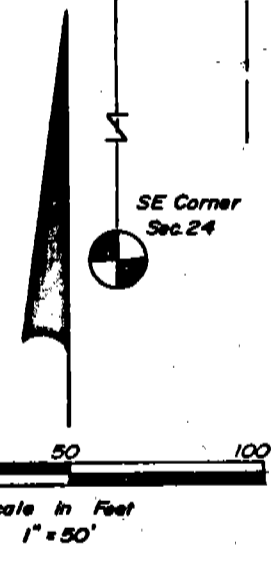
NUMERICAL
GENERAL
TAX REG.
PICTURED

STATE OF NEBRASKA }
SCOTT'S BLUFF COUNTY } ss.

Entered on Numerical Index and filed for record the 12 day of June 1973, at 10:30 o'clock A.M., and recorded in Book 140 of Reeds

Records on Page 480
Mary Jo Ellis
REGISTER OF DEEDS

By Opal J. Clark Deputy



2432

SURVEYOR'S CERTIFICATE

I, Ronald L. Vogel, a competent surveyor of Scotts Bluff County, Nebraska, hereby certify that I have surveyed and platted WIEDEMAN SUBDIVISION, LOTS A, B, C & D, a subdivision of Tract One, Wildy & Lana Industrial Tracts situated on part of the Southeast Quarter (SE $\frac{1}{4}$) of Section Twenty-four (24), Township Twenty-two (22) North, Range Fifty-five (55) West of the 6th P. M., in the City of Scottsbluff, Scotts Bluff County, Nebraska.

That the accompanying plat is a true delineation of such survey and subdivision drawn to a scale of 50 feet to the inch. That all corners are marked as shown and that all dimensions are in feet and decimals. That the boundary of such WIEDEMAN SUBDIVISION is shown on the plat with a heavy solid line.

WITNESS MY HAND AND SEAL this 20th day of April, 1973.



Ronald L. Vogel
RONALD L. VOGEL, NEBRASKA REGISTERED
LAND SURVEYOR, L. S. 266

OWNER'S STATEMENT AND DEDICATION

We, the undersigned, being the owners of Tract One, Wildy & Lana Industrial Tracts, a part of the City of Scottsbluff, Nebraska and situated on a part of the SE $\frac{1}{4}$ of Section 24, Township 22 North, Range 55 West of the 6th P. M., Scotts Bluff County, Nebraska have caused such real estate to be subdivided and platted as Lots A, B, C, & D, WIEDEMAN SUBDIVISION. The foregoing subdivision is made with the free consent and in accordance with the desires of the undersigned owners. We hereby dedicate the easements designated and shown on the plat to the use and benefit of the public.

Dated this 26th day of April, 1973.

(OWNERS OF LOT D)

Twyla B. Wilburn
TWYLA B. WILBURN

Leon G. Wilburn
LEON G. WILBURN

(OWNERS OF LOTS A, B, & C)
WIEDEMAN BROTHERS, INC.

by: *Victor Wiedeman*
VICTOR WIEDEMAN, PRESIDENT

Attest *Ronald E. Wiedeman*
SECRETARY

482

WIEDEMAN SUBDIVISION
LOTS A, B, C, & D

CONTINUATION SHEET 3

2432

ACKNOWLEDGEMENT

STATE OF NEBRASKA)
SOCTTS BLUFF COUNTY) ^{SS}

Before me, a Notary Public, qualified and acting in such County,
personally came Twyla B. Wilburn and Leon G. Wilburn, husband and wife and
Victor Wiedeman, President of Wiedeman Brothers, Inc. a Nebraska
Corporation, to me known to be the identical persons and president of
such corporation and acknowledged the execution thereof to be their voluntary
act and deed and the voluntary act and deed of such corporation.

WITNESS MY HAND AND NOTARIAL SEAL this 26th day of April, 1973.



Bonnie L. Smith
NOTARY PUBLIC

MY COMMISSION EXPIRES: June 13, 1976

APPROVAL AND ACCEPTANCE

The foregoing subdivision of WIEDEMAN SUBDIVISION approved and
accepted by the Mayor and City Council of the City of Scottsbluff,
Nebraska by resolution duly passed this 14th day of MAY,
1973.

G. A. Thomas
MAYOR

ATTEST: H. P. Ferguson
CITY CLERK

