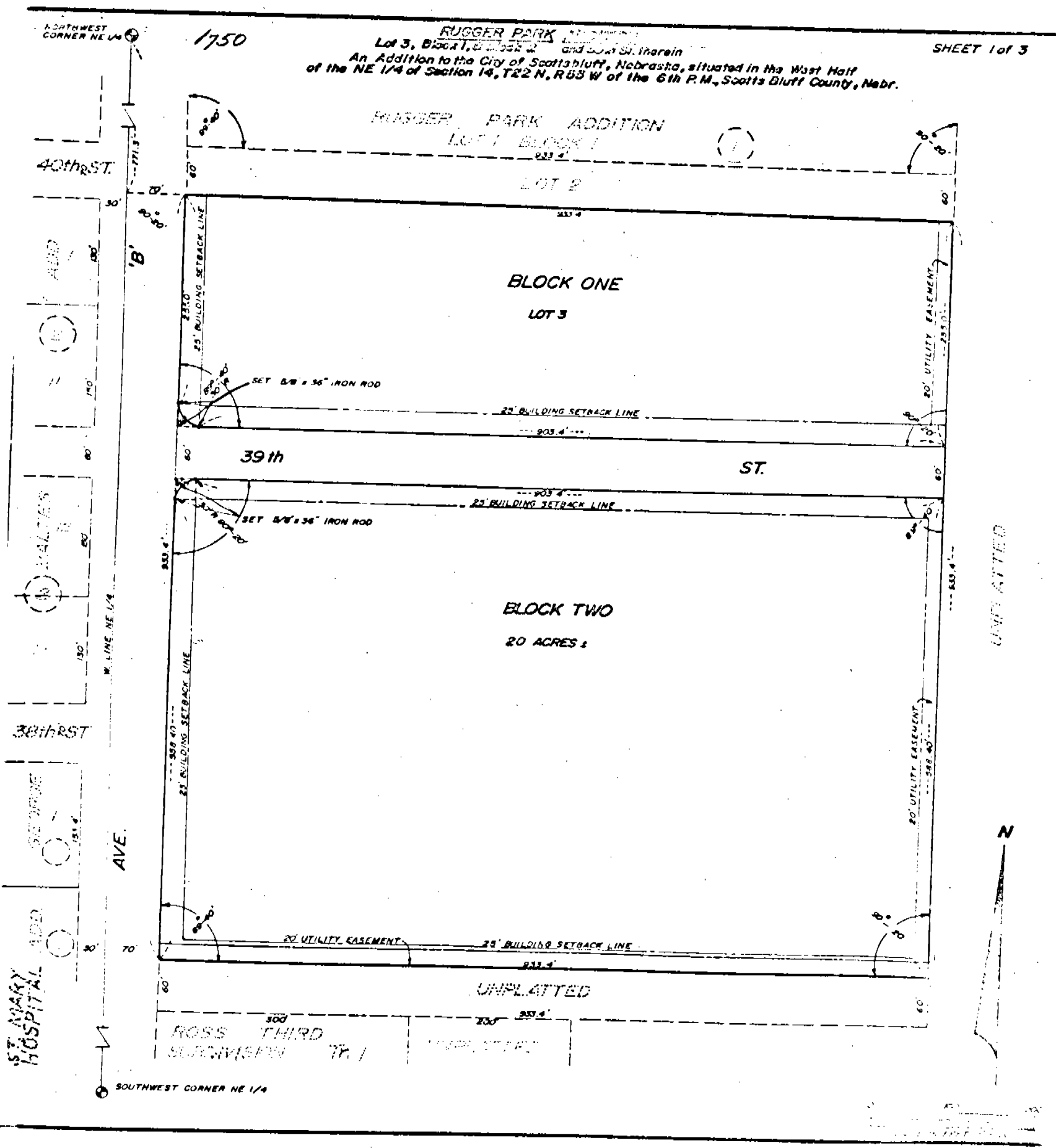


NOTE: See Final Plat Lot 3, Block 1 & Block 2, Rugger Park Addition, Deed 189-531



SHEET 1 of 3

1750

NORTHWEST CORNER NE 1/4

SOUTHWEST CORNER NE 1/4

ST. MARY'S HOSPITAL ADD.

UNPLATTED

162

RUGGER PARK ADDITION  
LOT THREE, BLOCK ONE,  
BLOCK TWO

1750

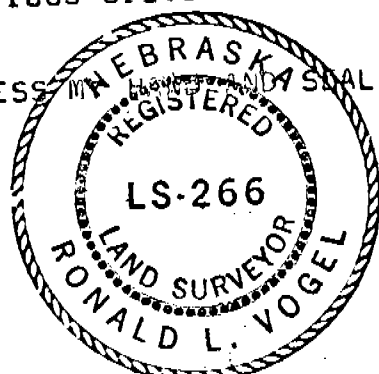
SURVEYOR'S CERTIFICATE

I, Ronald L. Vogel, a competent surveyor of Scotts Bluff County, Nebraska, hereby certify that I have surveyed and platted RUGGER PARK ADDITION, LOT THREE, BLOCK ONE, AND BLOCK TWO, an addition to the City of Scottsbluff, Nebraska, situated in the West Half (W $\frac{1}{2}$ ) of the Northeast Quarter (W $\frac{1}{2}$ NE $\frac{1}{4}$ ) of Section Fourteen (14), Township Twenty-two (22) North, Range Fifty-five (55) West of the 6th P. M., Scotts Bluff County, Nebraska, the boundary of such subdivision being more particularly described as follows:

With reference to the Northwest corner of such NE $\frac{1}{4}$ ; then South on the West Line of such NE $\frac{1}{4}$  a distance of 771.3 feet; then a deflection angle to the left of 90 degrees a distance of 70.0 feet to the POINT OF BEGINNING, such point of beginning also being the South-west corner of Lot Two, Block One, Rugger Park Addition to the City of Scottsbluff, Nebraska, then continuing on the line last described and on the South Line of Block Two, Rugger Park Addition, a distance of 933.40 feet to the Southeast corner of such Block Two; then a deflection angle to the right of 90 degrees a distance of 933.40 feet; then a deflection angle to the right of 89 degrees 40 minutes a distance of 933.40 feet to a point that is 60 feet North of the Northwest corner of Block One, Ross Third Subdivision and 70.0 feet East of the West Line of the NE $\frac{1}{4}$  of Section 14; then a deflection angle to the right of 90 degrees 20 minutes a distance of 933.40 feet to the point of beginning, containing an area of 20.00 acres, more or less.

That the accompanying plat is a true delineation of such survey and subdivision drawn to a scale of 100 feet to the inch. That all dimensions are in feet and decimals and that all corners are marked with 5/8" x 36" iron rods driven well into the ground. That each Block bears its own number.

WITNESS MY HAND AND SEAL this 24th day of January, 1973.



Ronald L. Vogel  
RONALD L. VOGEL, NEBRASKA REGISTERED  
LAND SURVEYOR, L. S. 266

DEDICATION AND ANNEXATION

We, the undersigned, being the owners of that part of the W $\frac{1}{2}$ NE $\frac{1}{4}$  of Section 14, Township 22 North, Range 55 West of the 6th P. M., Scotts Bluff County, Nebraska, as shown by the accompanying plat and described in the foregoing "Surveyor's Certificate" have caused such real estate to be surveyed and platted as RUGGER PARK ADDITION, an addition to the City of Scottsbluff, Nebraska.

The foregoing Subdivision of RUGGER PARK ADDITION, and the Streets, Easements, and Building Setback designations shown on and referred to in the plat is made with the free consent and in accordance with the desires of the undersigned owners. We hereby dedicate the Streets referred to and shown on the plat to the use and benefit of the Public and further annex and make such real estate a part of the City of Scottsbluff, Nebraska.

Dated this 31<sup>st</sup> day of January, 1973.

Max C. Coppin  
MAX C. COPPIN  
EXECUTIVE VICE-PRESIDENT  
WEST NEBRASKA GENERAL HOSPITAL

ATTEST: Raymond L. Snyder (SEAL)  
SECRETARY  
WEST NEBRASKA GENERAL HOSPITAL

RUGGER PARK ADDITION  
LOT THREE, BLOCK ONE,  
BLOCK TWO

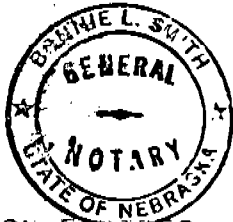
1750

ACKNOWLEDGMENT

STATE OF NEBRASKA)  
SCOTTS BLUFF COUNTY)SS

Before me, a Notary Public, qualified and acting in such County, personally came Max C. Coppom, Executive Vice-President of West Nebraska General Hospital, a Nebraska Non-Profit Corporation, to me known to be the identical person and Executive Vice-President of West Nebraska General Hospital, a Nebraska Non-Profit Corporation and acknowledged the execution thereof to be his voluntary act and deed and the voluntary act and deed of such corporation.

WITNESS MY HAND AND NOTARIAL SEAL this 31<sup>st</sup> day of January 1973.



Bonnie L. Smith  
NOTARY PUBLIC

MY COMMISSION EXPIRES:

June 13, 1976

APPROVAL AND ACCEPTANCE

The foregoing subdivision of RUGGER PARK approved and accepted by the Mayor and City Council of the City of Scottsbluff, Nebraska, by resolution duly passed this 30th day of April, 1973.

E. A. Thomas  
MAYOR

ATTEST: H. L. Ferguson  
CITY CLERK



915  
Ed. M.C. Schaff  
Sec

NUMERICAL  
 GENERAL  
TAX REG.  
 PICTURED

STATE OF NEBRASKA }  
SCOTTS BLUFF COUNTY } ss.

Entered on Numerical Index and filed for record the 2 day of May 1973 at 8:30 o'clock a. M., and recorded in Book 140 of Rees

Records on Page 161  
Mary Jo Kellis  
REGISTER OF DEEDS

By \_\_\_\_\_ Deputy