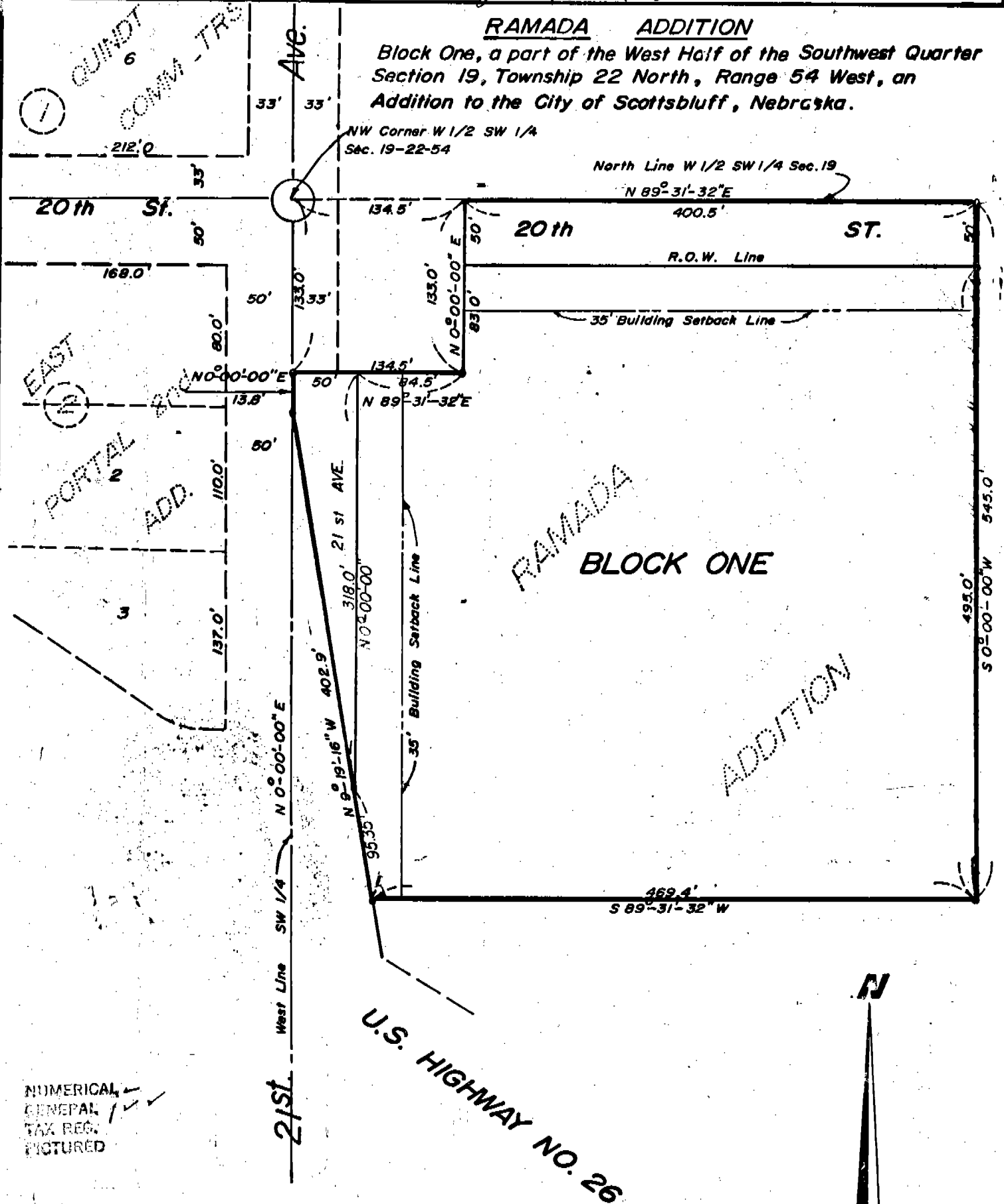


See Block 1A Ramada Addition Replat 174-468

377



QUINDT
6
COMM - TRS

EAST
PORTAL
2
ADD.

RAMADA
BLOCK ONE

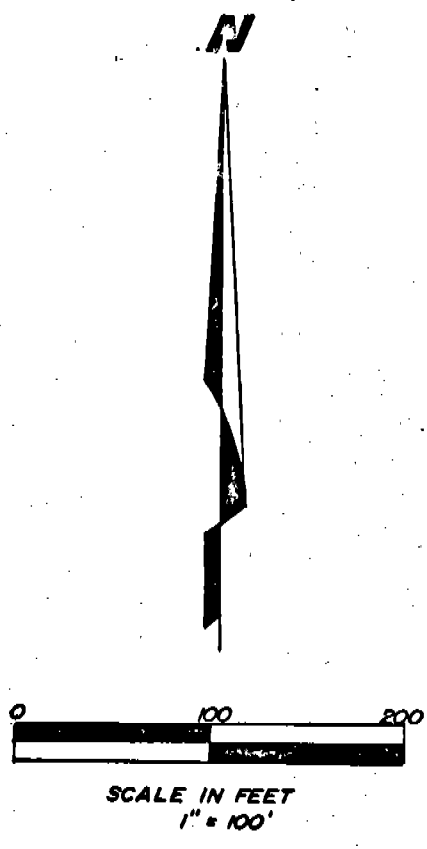
ADDITION

NUMERICAL
GENERAL
TAX REC.
PICTURED

STATE OF NEBRASKA }
SCOTTS BLUFF COUNTY } ss. ✓

Entered on Numerical Index and filed for
record the 5 day of February
1973, at 1:25 o'clock P. Mr., and
recorded in Book 139 of
Deeds

Records on Page 379
Mary Jo Kallis
REGISTER OF DEEDS



421

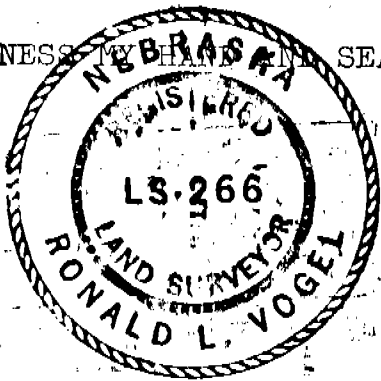
SURVEYOR'S CERTIFICATE

I, Ronald L. Vogel, a competent surveyor of Scotts Bluff County, Nebraska, hereby certify that I have surveyed RAMADA ADDITION, BLOCK ONE, (1), to the City of Scottsbluff, Nebraska, such subdivision being situated on part of the Southwest Quarter (SW¹/₄) of Section Nineteen (19), Township Twenty-two (22) North, Range Fifty-four (54) West of the 6th P. M., Scotts Bluff County, Nebraska, the boundary of such subdivision being more particularly described as follows:

Beginning at a point on the West Line of such W¹/₂SW¹/₄, such point being 146.8 feet south of the Northwest corner of such W¹/₂SW¹/₄; then North 00 degrees 00 minutes 00 seconds East, on the West Line of such W¹/₂SW¹/₄ a distance of 13.80 feet; then North 89 degrees 31 minutes 32 seconds East a distance of 134.5 feet; then North 00 degrees 00 minutes 00 seconds East a distance of 133.0 feet to the North Line of such W¹/₂SW¹/₄; then North 89 degrees 31 minutes 32 seconds East, on the North Line of such W¹/₂SW¹/₄ a distance of 400.5 feet; then South 00 degrees 00 minutes 00 seconds West a distance of 545.0 feet; then South 89 degrees 31 minutes 32 seconds West a distance of 469.4 feet to the Right of Way Line of Highway No. 26, then North 09 degrees 19 minutes 16 seconds West, on such Right of Way Line, a distance of 402.9 feet to the point of beginning, containing an area of 6.00 acres more or less.

That the accompanying plat is a true delineation of such survey drawn to a scale of 100 feet to the inch. That all corners are marked with 5/8" x 36" iron rods and that all dimensions are in feet and decimals.

WITNESS MY HAND AND SEAL this 6th day of November, 1972.



Ronald L. Vogel
RONALD L. VOGEL, NEBRASKA REGISTERED
LAND SURVEYOR, L. S. 266

DEDICATION AND ANNEXATION

We, the undersigned, being the owners of that part of the SW¹/₄ of Section 19, Township 22 North, Range 54 West of the 6th P. M., Scotts Bluff County, Nebraska, as shown in the accompanying plat and described in the foregoing "Surveyor's Certificate" have caused such real estate to be surveyed and platted as RAMADA ADDITION, BLOCK ONE, an addition to the City of Scottsbluff, Nebraska.

The foregoing subdivision of RAMADA ADDITION and the Streets, Avenues Alleys, Easements and Building Setback Designations shown on and referred to in the plat is made with the free consent and in accordance with the desires of the undersigned owners. We hereby dedicate the Street, Avenues, Alleys designated upon and referred to in the plat to the use and benefit of the public and further annex and make such real estate a part of the City of Scottsbluff, Nebraska.

Dated this 4th day of November, 1972. CONTINENTAL WESTERN CORPORATION
NORTHWESTERN NATIONAL BANK A NEBRASKA CORPORATION
A NEBRASKA CORPORATION OWNER OF RAMADA ADDITION

by: *Daniel J. Rishel*
DANIEL J. RISHEL
ASSISTANT VICE-PRESIDENT

by: *J. R. Swenson*
J. R. SWENSON

ATTEST: *[Signature]*

ATTEST: *J. R. Swenson*

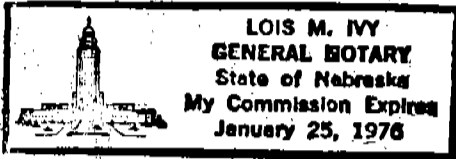
ACKNOWLEDGEMENT

STATE OF NEBRASKA)
DOUGLAS COUNTY) ss

Before me, a Notary Public, qualified in said County, personally came Daniel Rishel, Assistant Vice-President of Northwestern National Bank, to me known to be the identical person whose name is affixed to the foregoing Dedication and Annexation and acknowledged the execution thereof to be his voluntary act and deed and the voluntary act and deed of such corporation.

WITNESS MY HAND AND NOTARIAL SEAL this 9 day of November, 1972

MY COMMISSION EXPIRES: 1-25-76



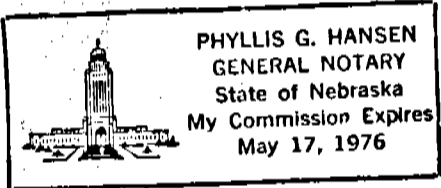
Lois M. Ivy
NOTARY PUBLIC

ACKNOWLEDGEMENT

STATE OF NEBRASKA)
SARPY COUNTY) ss

Before me, a Notary Public, qualified in said County, personally came J. R. Swenson, President of Continental Western Corporation, a Nebraska Corporation, to me known to be the identical person whose name is affixed to the foregoing Dedication and Annexation and acknowledged the execution thereof to be his voluntary act and deed and the voluntary act and deed of such corporation.

WITNESS MY HAND AND NOTARIAL SEAL this 8th day of November 1972.



Phyllis G. Hansen
NOTARY PUBLIC

MY COMMISSION EXPIRES May 17, 1976

APPROVAL AND ACCEPTANCE

The accompanying plat of RAMADA ADDITION and the Dedication and Annexation approved by the Mayor and City Council of the City of Scottsbluff, Nebraska by resolution duly passed this 29th day of January, 1973.

L. A. Thomas
MAYOR

ATTEST:
A. L. Ferguson
CITY CLERK



421