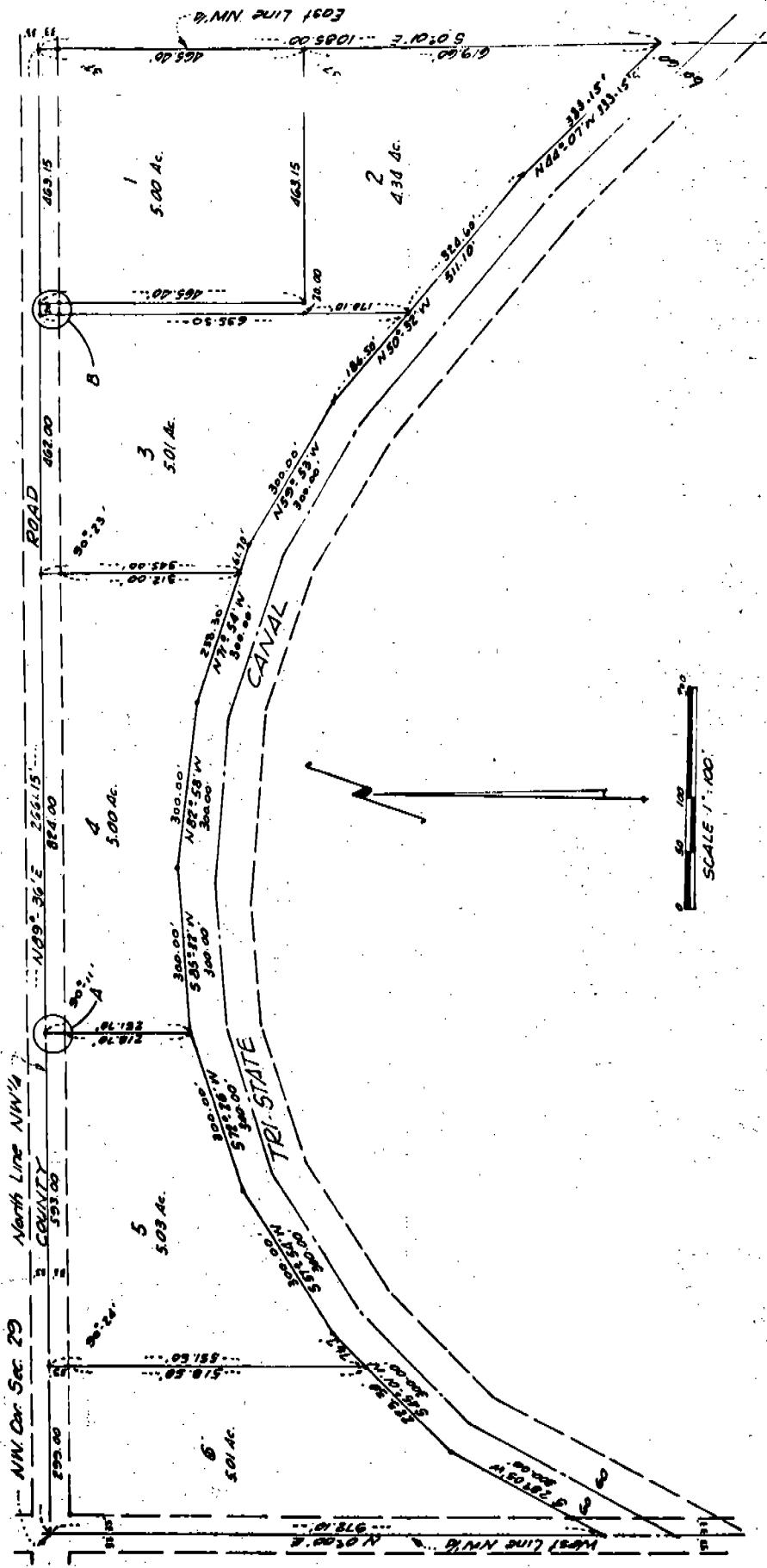


ZIEGLER SUBDIVISION 247

LOTS ONE THROUGH SIX

A PART OF THE NW 1/4 OF SECTION 29, T23 N., R55 W 6th P.M.
SCOTTS BLUFF CO., NEBRASKA



247

SURVEYOR'S CERTIFICATE

I, Ronald L. Vogel, a competent surveyor of Scotts Bluff County, Nebraska, hereby certify that I have surveyed ZIEGLER SUBDIVISION, LOTS ONE (1) through Six (6), situated on a part of the Northwest Quarter (NW¹/₄) of Section Twenty-nine (29), Township Twenty-three (23) North, Range Fifty-five (55) West of the 6th P.M., Scotts Bluff County, Nebraska, the boundary of such subdivision being more particularly described as follows:

Beginning at the Northwest corner of such NW¹/₄; then North 89 degrees 36 minutes East, on the North Line of such NW¹/₄, a distance of 2661.15 feet to the Northeast corner of such NW¹/₄; then South 00 degrees 01 minutes East, on the East Line of such NW¹/₄, a distance of 1085.00 feet to the North Right of Way Line of the Tri-State Irrigation Canal; then Northwesterly along such Right of Way Line, North 44 degrees 07 minutes West a distance of 333.15 feet; North 50 degrees 32 minutes West a distance of 511.10 feet; North 59 degrees 53 minutes West a distance of 300.00 feet; North 71 degrees 54 minutes West a distance of 300.00 feet; North 82 degrees 58 minutes West a distance of 300.00 feet; South 85 degrees 32 minutes West a distance of 300.00 feet; South 72 degrees 26 minutes West a distance of 300.00 feet; South 57 degrees 54 minutes West a distance of 300.00 feet; South 45 degrees 01 minutes West a distance of 300.00 feet; South 28 degrees 05 minutes West a distance of 300.00 feet to the West Line of such NW¹/₄; then North 00 degrees 00 minutes East, on the West Line of such NW¹/₄, a distance of 972.10 feet to the point of beginning, containing an area of 29.40 acres, more or less.

That the accompanying plat is a true delineation of such survey drawn to a scale of 200 feet to the inch. That all corners are marked with 5/8" x 36" iron rods driven well into the ground. That all dimensions are in feet and decimals. That each Lot bears its own number and that the boundary of the subdivision is shown on the plat with a heavy dotted line.

WITNESS MY HAND AND SEAL this 18th day of February, 1972.



Ronald L. Vogel
RONALD L. VOGEL
NEBRASKA REGISTERED LAND SURVEYOR LS 266

OWNER'S STATEMENT

We, the undersigned, being the owners of that part of the Northwest Quarter (NW¹/₄) of Section 29, Township 23 North, Range 55 West of the 6th P.M., Scotts Bluff County, Nebraska as shown and described in the foregoing Plat and "Surveyor's Certificate" have caused such land to be surveyed and platted as ZIEGLER SUBDIVISION, LOTS ONE (1) through SIX (6), a subdivision of part of the Northwest Quarter of Section 29.

The foregoing subdivision of Ziegler Subdivision is made with the free consent and in accordance with the desires of the undersigned owners. The undersigned hereby agree, when this plat is accepted, to allow no access to the County Road on the North side of this subdivision, except at the locations shown on the plat and designated with the letters A and B.

Dated this 25th day of February, 1972.

Herbert Ziegler
Herbert Ziegler
Dorothy V. Ziegler
Dorothy V. Ziegler

247

ACKNOWLEDGEMENT

STATE OF NEBRASKA)
SCOTTS BLUFF COUNTY) ss

Before me, a Notary Public, qualified in said County, personally came Herbert Ziegler and Dorothy V. Ziegler, husband and wife, known to be to be the identical persons who signed the foregoing "Owners Statement" and acknowledged the execution thereof to be their voluntary act and deed.

WITNESS MY HAND AND NOTARIAL SEAL this 25th day of FEBRUARY, 1972.



[Signature]
Notary Public

My commission expires: November 14, 1972

APPROVAL AND ACCEPTANCE

The foregoing subdivision of Ziegler Subdivision, Lots 1 through 6 and the " Owners Statement" approved by the Chairman and the Board of Commissioners of Scotts Bluff County, Nebraska by resolution duly passed this 22 day of JANUARY, 1973.

[Signature]
Chairman

ATTEST: [Signature]
County Clerk



✓ NUMERICAL
✓ GENERAL
TAX REG.
PICTURED

STATE OF NEBRASKA }
SCOTTS BLUFF COUNTY } ss.

Entered on Numerical Index and filed for record the 23 day of January 1973, at 9:10 o'clock a. M., and recorded in Book 139 of Reels

Records on Page 299
[Signature]
REGISTER OF DEEDS