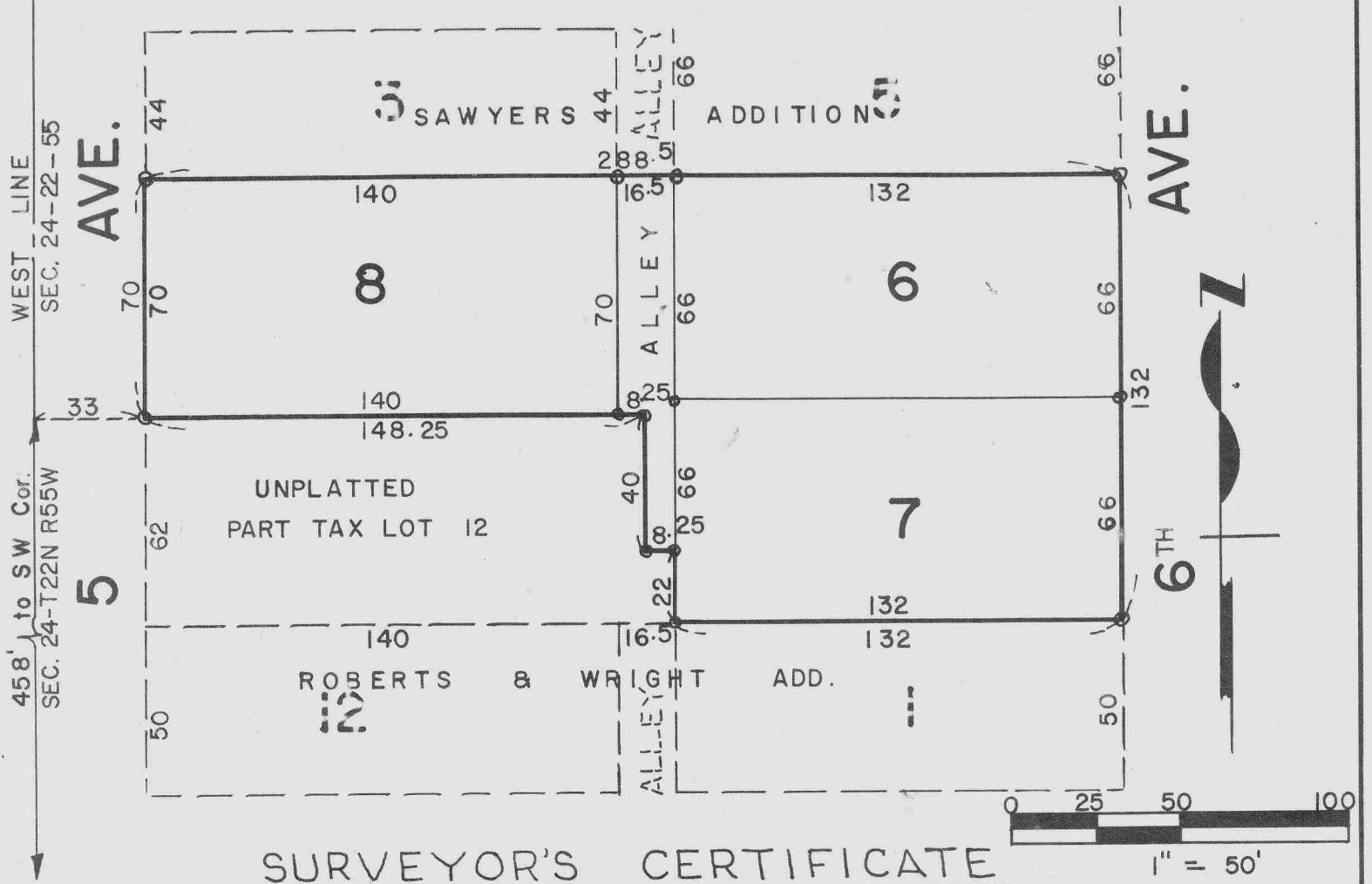


# SAWYERS ADDITION

LOTS 6, 7 & 8

AN ADDITION IN THE CITY OF SCOTTSBLUFF, NEBRASKA




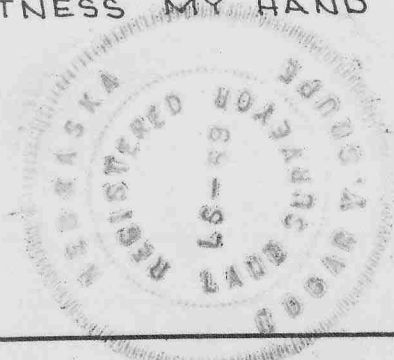
## SURVEYOR'S CERTIFICATE

I, E. Y. GRUPE, A COMPETENT SURVEYOR OF SCOTTS BLUFF COUNTY, NEBRASKA, DO HEREBY CERTIFY THAT A SURVEY WAS COMPLETED UNDER MY DIRECTION OF A PARCEL OF LAND SITUATED IN THE SOUTHWEST QUARTER OF THE SOUTHWEST QUARTER (SW 1/4 SW 1/4) OF SECTION TWENTY-FOUR (24), TOWNSHIP TWENTY-TWO (22) NORTH, RANGE FIFTY-FIVE (55) WEST OF THE SIXTH PRINCIPAL MERIDIAN IN THE CITY OF SCOTTSBLUFF, SCOTTS BLUFF COUNTY, NEBRASKA, MORE PARTICULARLY DESCRIBED AS FOLLOWS; BEGINNING AT A POINT 458 FEET NORTH AND 33 FEET EAST OF THE SOUTHWEST CORNER OF SAID SECTION 24; THENCE NORTH PARALLEL WITH THE WEST LINE OF SAID SECTION A DISTANCE OF 70 FEET; THENCE EAST PARALLEL WITH THE SOUTH LINE OF SAID SECTION A DISTANCE OF 288.5 FEET; THENCE SOUTH PARALLEL WITH THE WEST LINE OF SAID SECTION A DISTANCE OF 132 FEET; THENCE WEST PARALLEL WITH THE SOUTH LINE OF SAID SECTION A DISTANCE OF 132 FEET; THENCE NORTH PARALLEL WITH THE WEST LINE OF SAID SECTION A DISTANCE OF 22 FEET; THENCE WEST PARALLEL WITH THE SOUTH LINE OF SAID SECTION A DISTANCE OF 8.25 FEET; THENCE NORTH PARALLEL WITH THE WEST LINE OF SAID SECTION A DISTANCE OF 40 FEET; THENCE WEST PARALLEL WITH THE SOUTH LINE OF SAID SECTION A DISTANCE OF 148.25 FEET TO THE POINT OF BEGINNING. CONTAINING 0.66 ACRES MORE OR LESS. SUCH PARCEL WAS FURTHER SUBDIVIDED AND PLATTED AS LOTS 6, 7 & 8 "SAWYER'S ADDITION" IN THE CITY OF SCOTTSBLUFF, NEBRASKA.

THAT THE ACCOMPANYING PLAT IS A CORRECT DELINEATION OF SUCH SURVEY DRAWN TO A SCALE OF 50 FEET TO ONE INCH WITH ALL DIMENSIONS SHOWN IN FEET AND DECIMALS THEREON. THAT EACH LOT BEARS ITS OWN NUMBER. THAT 5/8" IRON RODS ARE DRIVEN WELL INTO THE GROUND AT ALL CORNER'S OF THE LOTS AS SHOWN. THAT THE BOUNDARIES OF THE ADDITION ARE SHOWN ON THE PLAT WITH A HEAVY SOLID LINE.

WITNESS MY HAND AND SEAL THIS 20<sup>TH</sup> DAY OF JULY 1969.

  
 E. Y. GRUPE SCOTTSBLUFF, NEBR.  
 NEBR. REGISTERED LAND SURVEYOR  
 L. S. 69

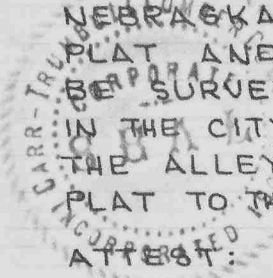


LOTS 6,7 & 8 SAWYER'S ADDITION (CONTINUATION SHEET NO. 2)

82

STATEMENT OF OWNERSHIP AND DEDICATION

THE UNDERSIGNED OWNER OF THAT PART OF THE SW 1/4 SW 1/4 SEC. 24 T22N R55W OF 6<sup>TH</sup> P.M. IN THE CITY OF SCOTTSBLUFF, NEBRASKA, MORE PARTICULARLY DESCRIBED IN THE ATTACHED PLAT AND SURVEYOR'S CERTIFICATE, HAVE CAUSED SUCH LAND TO BE SURVEYED AND PLATTED AS LOTS 6, 7 & 8 "SAWYER'S ADDITION" IN THE CITY OF SCOTTSBLUFF, NEBRASKA, AND DO HEREBY DEDICATE THE ALLEY DESIGNATED UPON AND REFERRED TO ON SUCH ATTACHED PLAT TO THE USE AND BENEFIT OF THE PUBLIC.



ATTEST:

J. Carr Trumbull  
SECRETARY

CARR-TRUMBULL LUMBER COMPANY  
BY William A. Trumbull  
PRESIDENT

DATED THIS 6<sup>TH</sup> DAY OF NOVEMBER 1970.

ACKNOWLEDGEMENT

SCOTTS BLUFF COUNTY )  
STATE OF NEBRASKA ) ss

ON THIS 6<sup>TH</sup> DAY OF NOVEMBER 1970, BEFORE ME A NOTARY PUBLIC QUALIFIED FOR SAID COUNTY, PERSONALLY CAME WILLIAM S. TRUMBULL, PRESIDENT OF CARR-TRUMBULL LUMBER COMPANY, A CORPORATION, TO ME KNOWN TO BE THE PRESIDENT AND IDENTICAL PERSON WHO SIGNED THE FOREGOING INSTRUMENT, AND ACKNOWLEDGED THE EXECUTION THEREOF TO BE HIS VOLUNTARY ACT AND DEED AS SUCH OFFICER AND THE VOLUNTARY ACT AND DEED OF SAID CORPORATION AND THAT ITS CORPORATE SEAL WAS THERE TO AFFIXED BY ITS AUTHORITY.

Kenneth G. H. Roberts  
NOTARY

MY COMMISSION EXPIRES 27<sup>TH</sup> February 1973

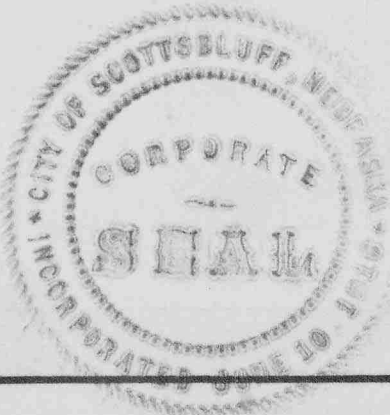


ACCEPTANCE

THE ACCOMPANYING PLAT AND DEDICATION APPROVED AND ACCEPTED BY THE MAYOR & CITY COUNCIL OF THE CITY OF SCOTTSBLUFF, NEBRASKA BY RESOLUTION DULY PASSED THIS 28 DAY OF December 1970.

B. A. Thomas  
MAYOR

ATTEST: A. L. Ferguson  
CITY CLERK



82

✓ NUMERICAL  
✓ GENERAL  
TAX REG.  
PICTURED

STATE OF NEBRASKA }  
SCOTTS BLUFF COUNTY } ss.

Entered on Numerical Index and filed for  
record the 13 day of January

1971, at 12:20 o'clock P. M., and

recorded in Book 134 of

Seeds

Records on Page 187

Mary J. Ellis  
REGISTER OF DEEDS

By \_\_\_\_\_ Deputy

<sup>54</sup>  
6<sup>54</sup> d. Filed