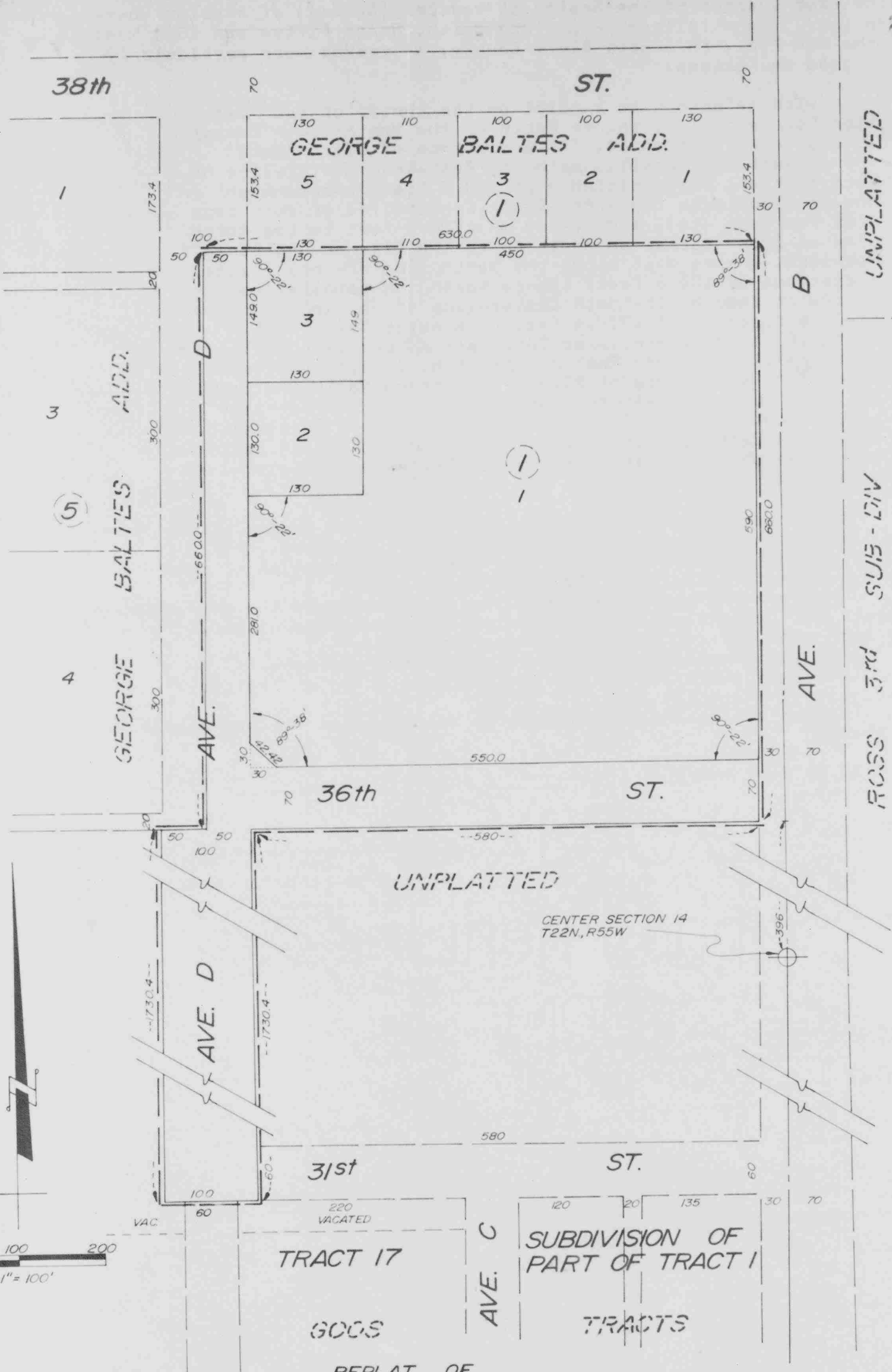


Note: See Re-Recorded Replat, Lots 1, 2, 3, Blk 1 - Book 133 - Pg. 239

2189



UNPLATTED

ROSS 3RD SUB-DIV

UNPLATTED

CENTER SECTION 14 T22N, R55W



0 50 100 200
Scale 1" = 100'

REPLAT OF
**ST. MARY HOSPITAL ADDITION, LOTS
 1, 2 & 3 BLOCK ONE**
 AN ADDITION TO THE CITY OF SCOTTSBLUFF, NEBRASKA

SURVEYOR'S CERTIFICATE

I, Ronald L. Vogel, a competent surveyor of Scotts Bluff County, Nebraska, do hereby certify that I have surveyed a part of the Southeast Quarter of the Northwest Quarter (SE $\frac{1}{4}$ NW $\frac{1}{4}$) and a part of the Northeast Quarter of the Southwest Quarter (NW $\frac{1}{4}$ SW $\frac{1}{4}$) of Section Fourteen (14), Township Twenty-two (22) North, Range Fifty-five (55) West of the 6th P.M., in Scotts Bluff County, Nebraska; more particularly described as follows:

With reference to a point on the center of such Section Fourteen (14), thence North on the North-South Center line of such Section 14, for a distance of 396.0 feet; thence West and parallel with the East-West Center-line of such Section, for a distance of 580.0 feet; thence South and parallel with the North-South Center-line of such Section Fourteen (14), a distance of 1730.4 feet to the North line of Goos Tracts, an Addition to the City of Scottsbluff Nebraska, thence West along the North line of Goos Tracts, a distance of 100.0 feet; thence North and parallel to the aforementioned North-South Center-line of Section Fourteen (14), a distance of 1730.4 feet to a point 396.0 feet North of the aforementioned East-West Center-line of Section Fourteen (14), thence East and parallel to such East-West Centerline a distance of 50.0 feet; thence North and parallel with such North-South Centerline of Section Fourteen (14) a distance of 660.0 feet; thence East and parallel with such East-West Centerline, a distance of 630.0 feet; thence South and parallel with such North-South Center-line a distance of 660.0 feet to the point of beginning.

That I have surveyed and platted such land as Replat of St. Mary Hospital Addition to the City of Scottsbluff, Nebraska.

That the accompanying plat is a correct delineation of such survey drawn to a scale of 100 feet to one inch.

That each lot and Block bears its own number and the corners thereof and boundaries of such subdivision are marked with 5/8" x 36" iron rods, driven well into the ground.

That all dimensions are shown in feet and decimals.

That the boundaries of the Addition are shown on the plat in a continuous heavy solid line.

That adjoining lands are shown in broken lines for orientation purposes.

WITNESS MY HAND AND SEAL this 1st day of July, 1970.



Ronald L. Vogel
 Ronald L. Vogel, Nebraska
 Registered Land Surveyor, L.S. 266

DEDICATION AND ANNEXATION

We, the undersigned, being the owners of that part of the SE 1/4 NW 1/4 and NE 1/4 SW 1/4 of Section 14, T22N, R55W, of the 6th P.M., in Scotts Bluff County, Nebraska have caused such real estate to be surveyed and platted as Replat of St. Mary Hospital Addition to the City of Scottsbluff, Nebraska as shown by the accompanying plat and surveyor's certificate.

The foregoing subdivision of real estate and the Streets, Avenues, Alleys and Easements, as appears on the accompanying plat is made with the free consent and in accordance with the desires of the undersigned owners.

We, hereby dedicate the Streets and Avenues, Alleys and Easements designated upon and referred to in the accompanying plat to the use and benefit of the public and further annex and make such real estate a part of City of Scottsbluff, Nebraska.

Dated this 8th day of July, 1970
ST. MARY HOSPITAL, SCOTTSBLUFF, NEBRASKA
A NEBRASKA CORPORATION

Sister M. Lucy King
Sister M. Lucy King, President

CITY OF SCOTTSBLUFF, NEBRASKA

By C. A. Thomas
C. A. Thomas
Mayor

ATTEST:

Deputy Dorothy F. Fisher
City Clerk

ACKNOWLEDGEMENT

STATE OF NEBRASKA) ss
SCOTTS BLUFF COUNTY)

On this 8th day of July, 1970, before me, a Notary Public in and for said County personally came Sister M. Lucy King, President of the St. Mary Hospital, A Nebraska Corporation, to me personally known to be such President and the identical person whose name is affixed to the above Annexation and Dedication and acknowledged the execution thereof to be her voluntary act and deed as such officer and the voluntary act and deed of said St. Mary Hospital, A Nebraska Corporation was thereto affixed by its authority.

WITNESS MY HAND AND NOTARIAL SEAL the date last aforesaid.

[Signature]
Notary Public

My Commission Expires 12/26/71

STATE OF NEBRASKA) ss
SCOTTS BLUFF COUNTY)

On this 27th day of July, 1970, before me, a Notary Public, duly commissioned in and for said County, personally came C. A. Thomas, Mayor of the City of Scottsbluff, Nebr. & Dorothy F. Fisher, Deputy City Clerk of such City, to me known to be the identical persons whose names are affixed to the foregoing annexation and dedication and acknowledged the same to be their voluntary acts and deeds.

WITNESS MY HAND AND NOTARIAL SEAL the day and year last above written.

Kenneth G.H. Roberts
Notary Public

My Commission Expires 27 February 1973

ACCEPTANCE

The foregoing plat of Replat of St. Mary Hospital Addition approved and accepted by the Mayor and City Council of the City of Scottsbluff, Nebraska by Resolution duly passed this 8th day of July, 1970.

C. A. Thomas
Mayor

ATTEST:

Deputy Dorothy F. Fisher
City Clerk